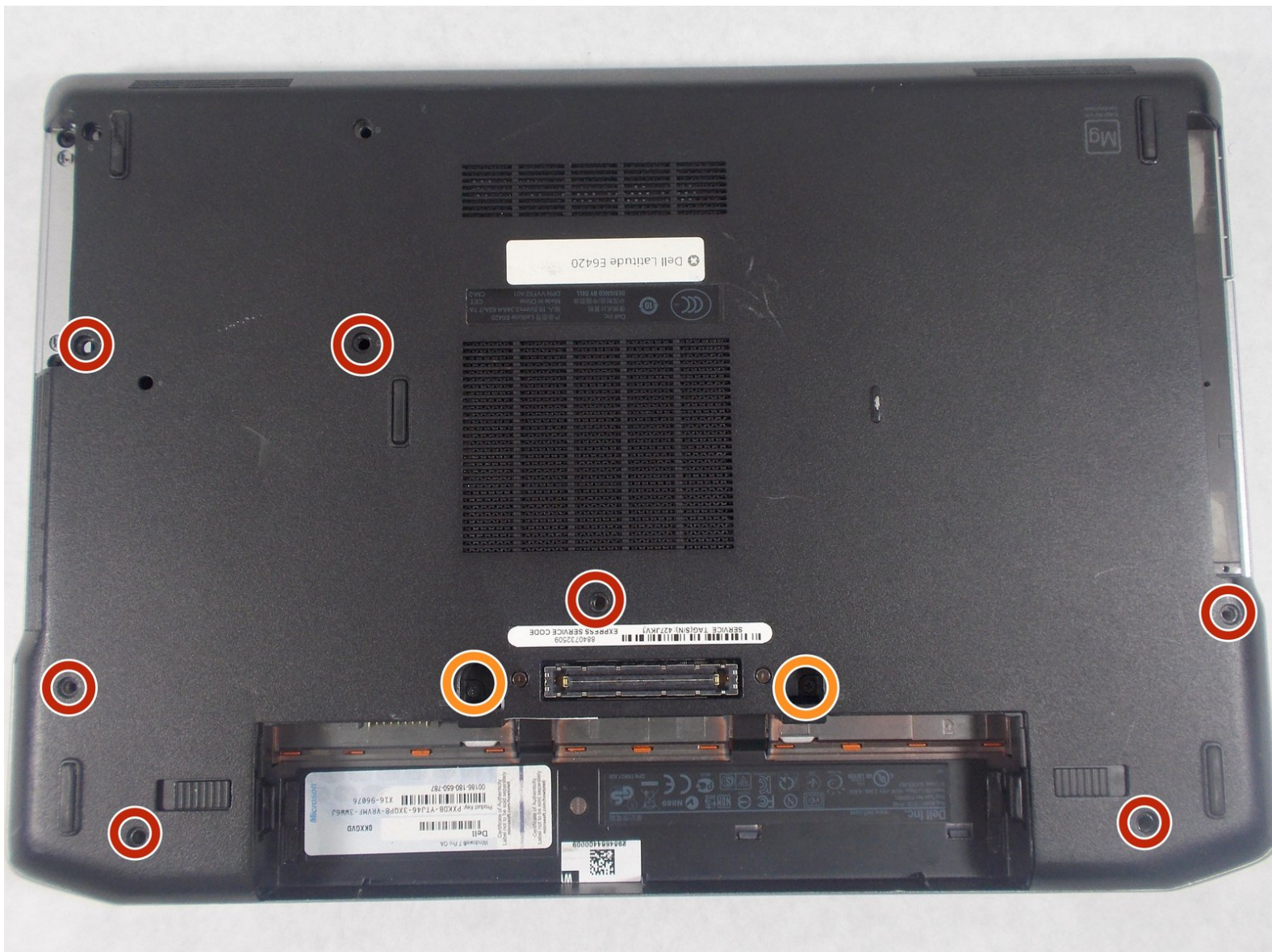




# Dell Latitude E6420 Backplate Replacement

How to replace a Dell Latitude E6420 backplate.

Written By: Madysen Eames



---

## INTRODUCTION

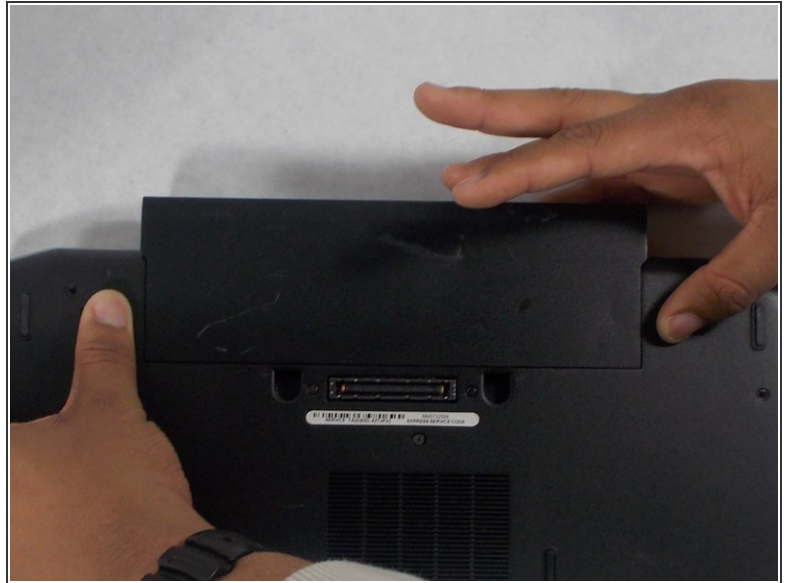
The backplate can crack and expose the hardware it protects. This guide will show the user how to replace the backplate.

---

### TOOLS:

- [Phillips #00 Screwdriver](#) (1)
  - [Phillips #1 Screwdriver](#) (1)
-

## Step 1 — Battery



- Push the tabs on the left and right of the battery out towards the edge of the case.

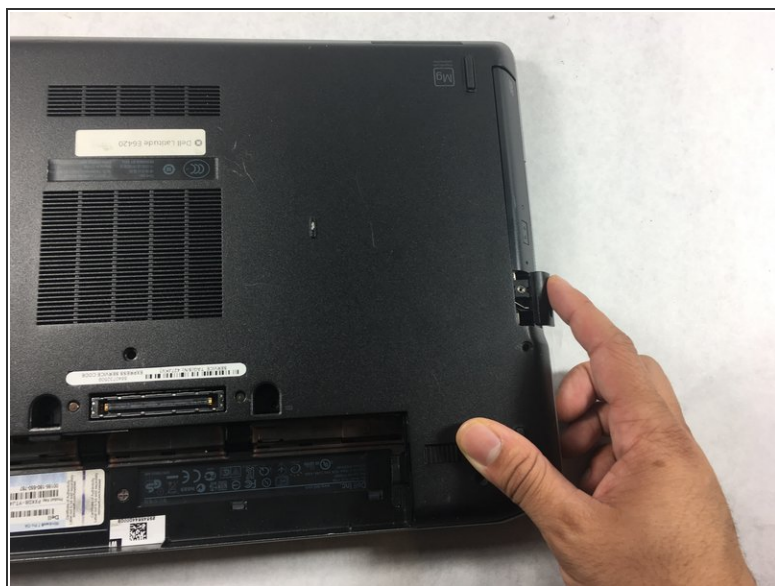
## Step 2



- While still pushing in the tabs, using your pinky finger, lift the battery out of the laptop.



### Step 3 — CD/DVD Drive



- Push the button in on the CD/DVD drive to eject the drive.

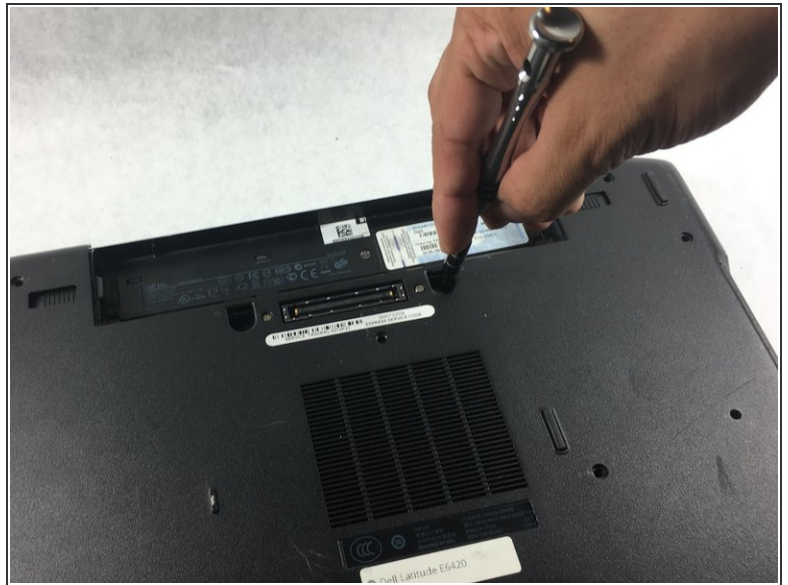
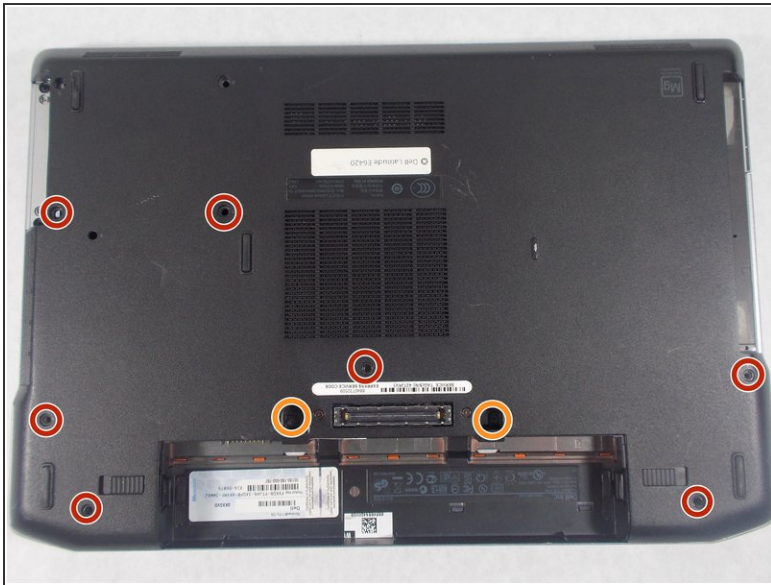
### Step 4



- Slide the drive out of the laptop.

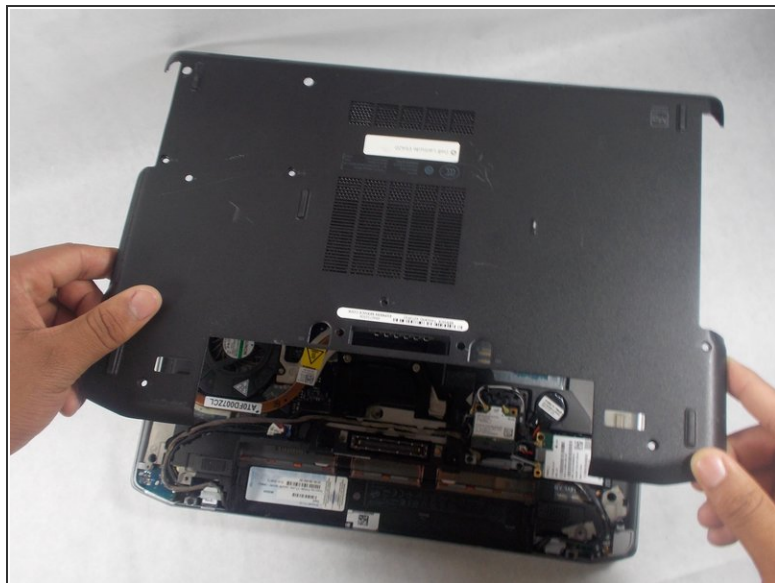
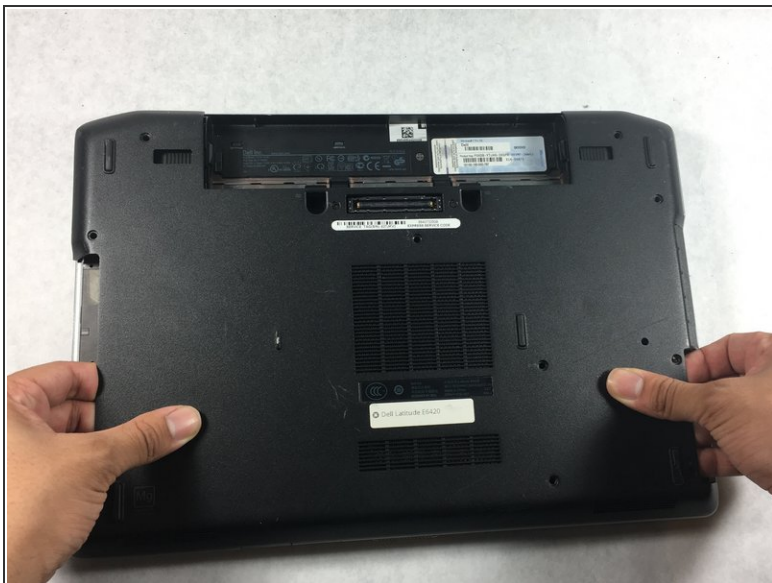
⚠ When removing the drive, keep it flat to prevent damage to anything inside the laptop.

## Step 5 — Backplate




- Using the screwdriver, remove seven 4mm Phillips #1 screws from the bottom of the laptop.
- Using the screwdriver, remove two 9mm Phillips #00 screws from the bottom of the laptop.

## Step 6



- Gently lift the back plate off of the laptop making sure all of the tabs on the inside perimeter of the back plate are unhooked before lifting.

 Be careful when removing the backplate. Lifting the backplate while the tabs are still hooked in will result in broken tabs.

To reassemble your device, follow these instructions in reverse order.