



Dell Latitude E6420 Battery Replacement

How to replace a Dell Latitude E6420 battery.

Written By: Madysen Eames



INTRODUCTION

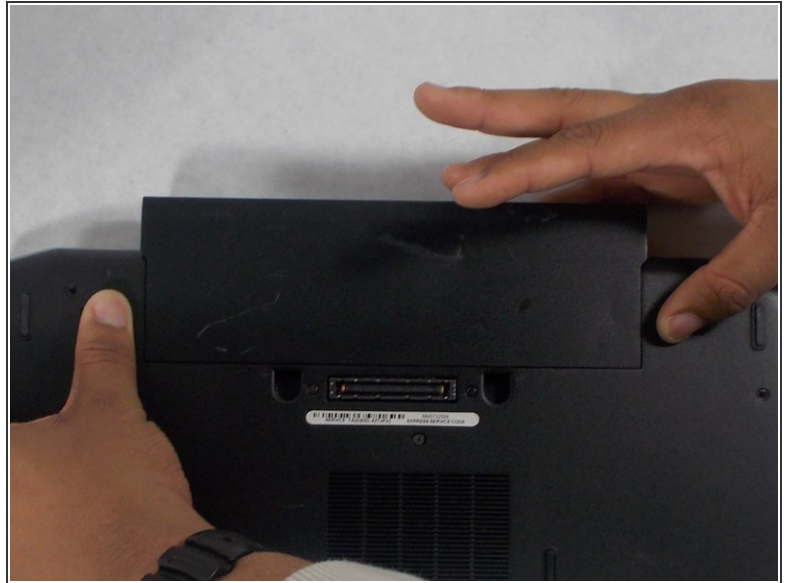
A laptop battery will begin to show a noticeably shorter run time after significant use. This guide will show the user how to replace the battery.



PARTS:

- [Dell Latitude E5520/E5420/E6420/E6430 Replacement Laptop Battery](#) (1)
-

Step 1 — Battery



- Push the tabs on the left and right of the battery out towards the edge of the case.

Step 2



- While still pushing in the tabs, using your pinky finger, lift the battery out of the laptop.

To reassemble your device, follow these instructions in reverse order.