



Motorola Moto G4 Play Charging Port Replacement

Use this guide to replace the charging port on...

Written By: Francisco Hernández



INTRODUCTION

Use this guide to replace the charging port on the Motorola Moto G4 Play.

Before you begin, download the [Rescue and Smart Assistant](#) app to backup your device and diagnose whether your problem is software or hardware related.

TOOLS:

[Tweezers](#) (1)

[Phillips #000 Screwdriver](#) (1)

[iFixit Opening Tool](#) (1)

[Spudger](#) (1)

Step 1 — Battery



- Open case with a plastic opening tool that has the same size as the divot located at the bottom left of the phone. If you don't have an opening tool, use your finger nails.

Step 2



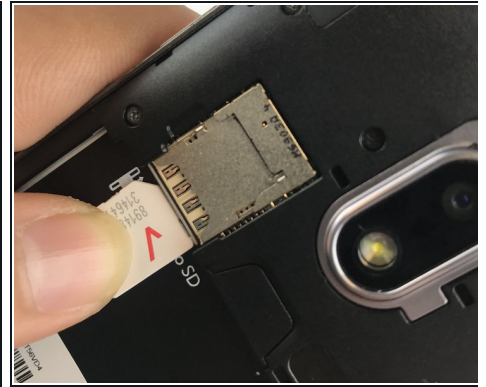
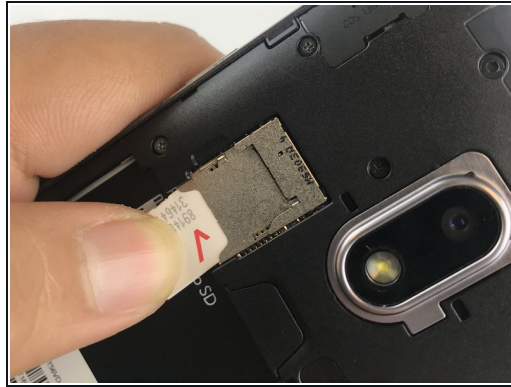
- Lift the case by the nearest corner to the divot and remove it from the phone.

Step 3



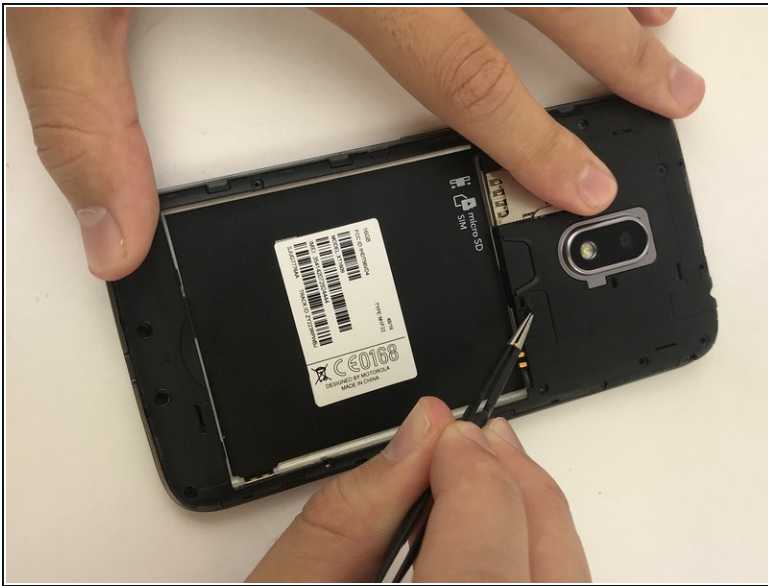
- Place the plastic opening tool into the notch located at the bottom of the battery compartment, and lift upwards. If you don't have an opening tool, use your finger nails.
- Remove battery from your phone.

Step 4 — Midframe



- Remove any SIM card and/or memory card present using your hand.

Step 5



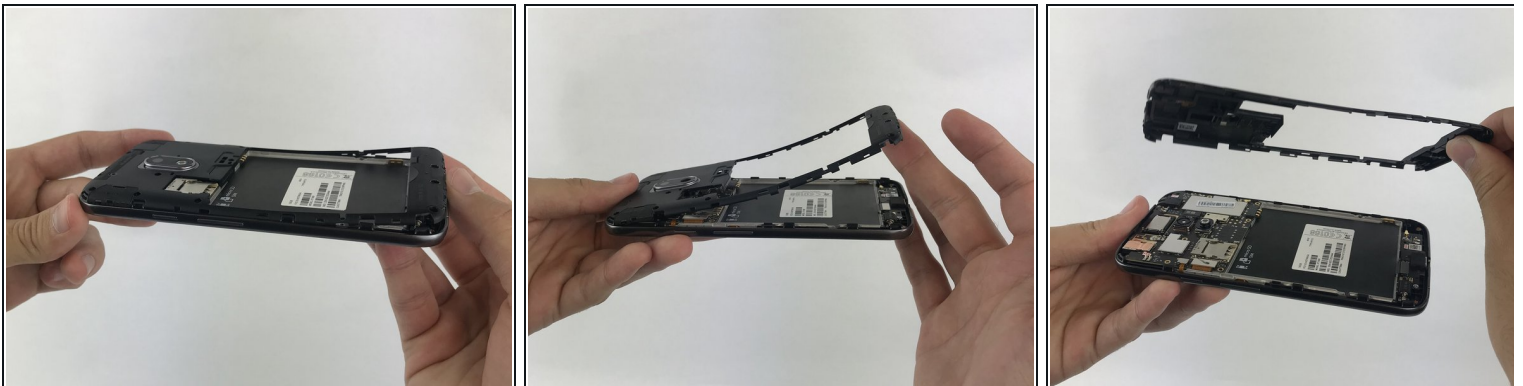
- Remove the small silicon cover at the bottom right of the camera using tweezers.

Step 6



- Remove the sixteen (16) 3mm Phillips PH000 screws securing the midframe.
- ⓘ Some phones have two shorter screws, one on each side of the battery (double marked with orange circles at left). If your device has these shorter screws, make sure they go back in their original holes.

Step 7



- Remove the back panel assembly with your hands.

Step 8 — Charging Port



- Use tweezers to pop up the antenna wire.

Step 9



- Use the flat end of a spudger to pry up on the connector at the bottom of the battery space.

Step 10



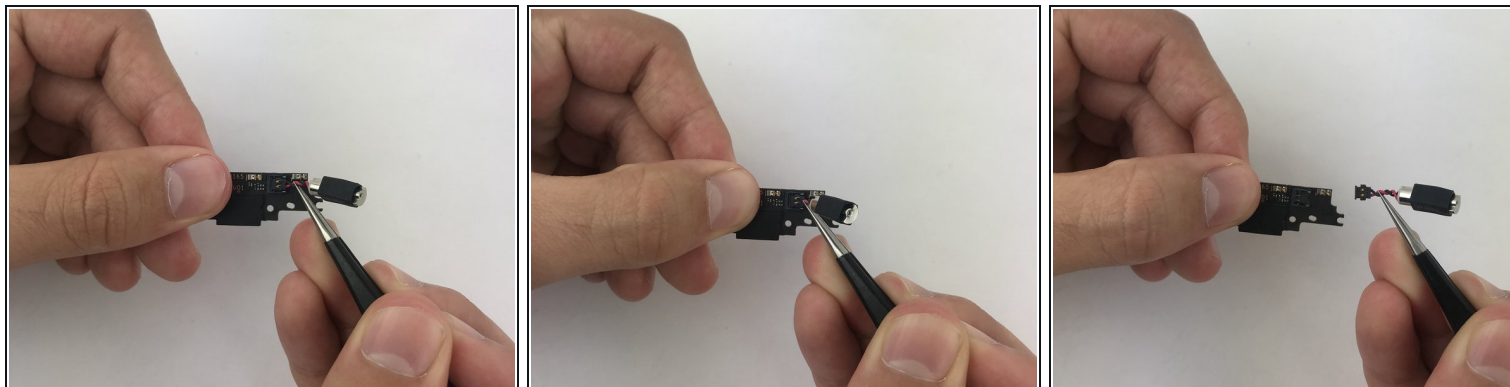
- Remove the two (2) 3mm Phillips PH000 screws securing the charging port.

Step 11



- Insert the tweezers under the vibrator and gently lift up the whole part.

Step 12



- Pop up on the vibrator's connector to separate it from the charging port.

To reassemble your device, follow these instructions in reverse order.