



# Bose QuietComfort 25 Motherboard Replacement

How to replace the motherboard in the Bose QuietComfort 25 Headphones.

Written By: Samuel Coss



## INTRODUCTION

These steps will outlines replacement of the QC25 Motherboard, one of which is located in each earpiece. Be warned, this guide requires precision soldering of very small components and not recommended for the faint of heart.



### TOOLS:

- [iFixit Opening Tools](#) (1)
- [Soldering Iron](#) (1)
- [Phillips #00 Screwdriver](#) (1)



### PARTS:

- [motherboard](#) (1)

## Step 1 — Motherboard



- Begin repair by removing the ear cushion.
- The cushion is held on by a few small plastic clips. Pry carefully with plastic opening tool or fingernails.

## Step 2



- Next, remove the soft lining behind the cushion. This is held on with adhesive and is easily removed by hand.

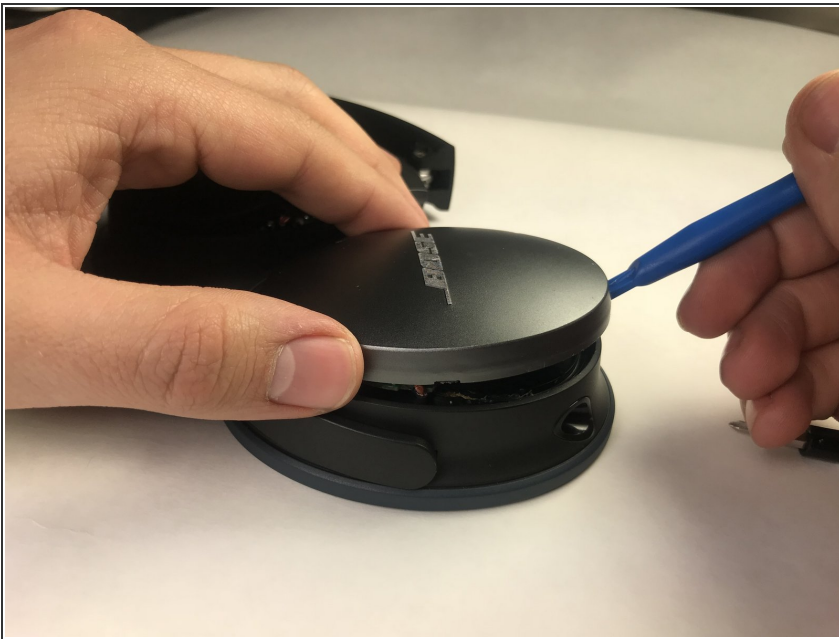


## Step 3



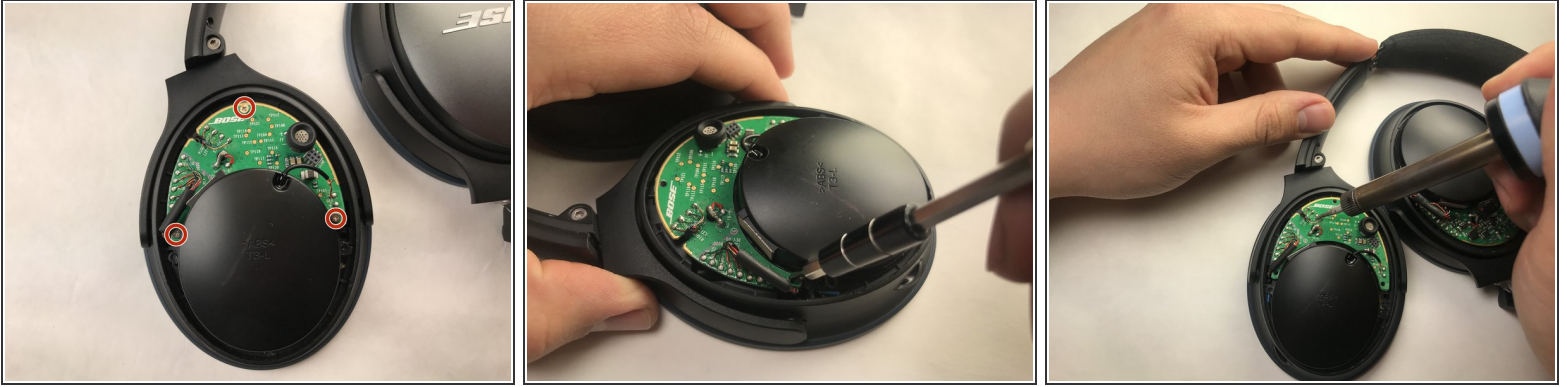
- Once the soft lining is removed from behind the ear cushion, two screws will be exposed.
- Carefully remove the two 5 mm screws with a precision screwdriver (PH00) and put aside.

## Step 4



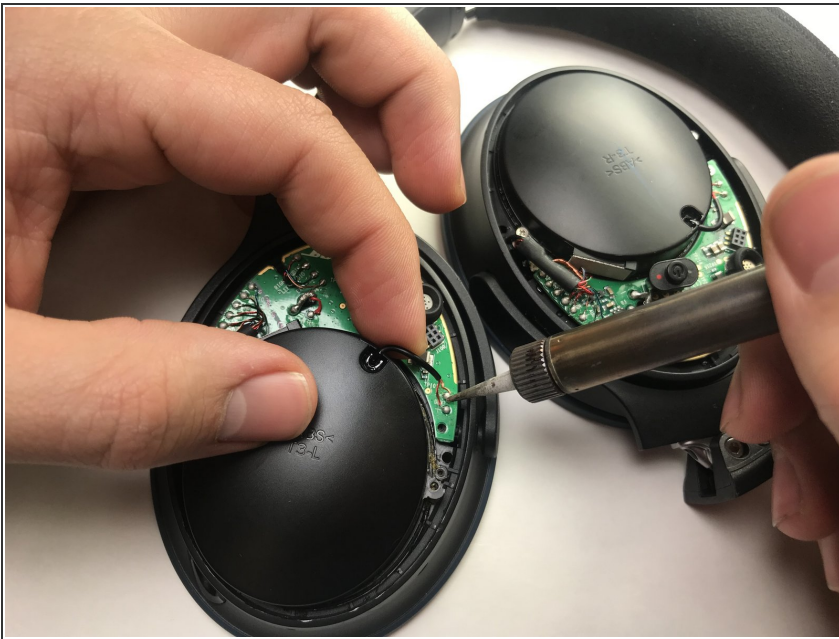
- Flip the earphones back over and carefully pry around the outside cover of the earpiece.
- Try a plastic opening tool before moving on to harder metal tools.
- This cover will come loose with moderate pressure.

## Step 5



- There are 3 screws holding the motherboard to the earpiece.
- Remove these screws to make the next step easier.

## Step 6



- Once the motherboard is exposed, all of the soldered connection will need to be removed.
- ⓘ Be careful of this step and take note of the position of each wire.
- ⚠ This should only be attempted by someone with experience soldering small components, as irreparable damage may be result from improper methods. For help with this step see this guide on [How To Solder and Desolder Connections](#)

## Step 7



- After removing all the soldered joints, the motherboard can be removed by hand.
- ★ The connections will all need to be re-soldered into their respective locations.

To reassemble your device, follow these instructions in reverse order.