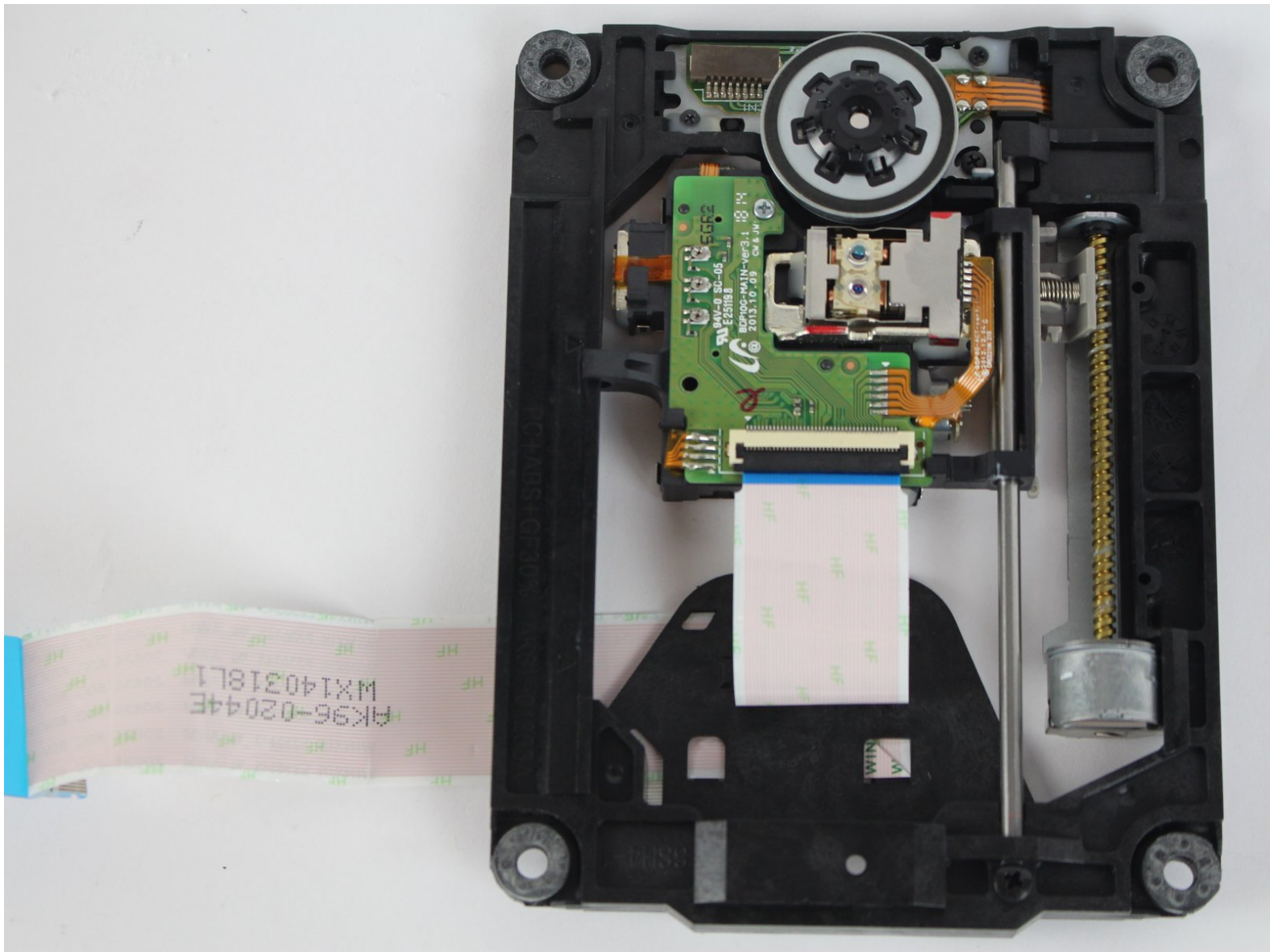




Samsung BD-F5700 Disc Reader Replacement

The following guide will show how to open the Samsung BD-F5700 and remove the disc reader.

Written By: Livan Perez



INTRODUCTION

This guide will demonstrate how to remove the disk reader of a Samsung BD-F5700 Blue Ray Reader correctly for replacement. This guide will be useful if the disk reader is not working. Before beginning make sure the device is unplugged and off. There are many fragile parts in the disk reader so handle with caution and avoid using metal tools on the interior.



TOOLS:

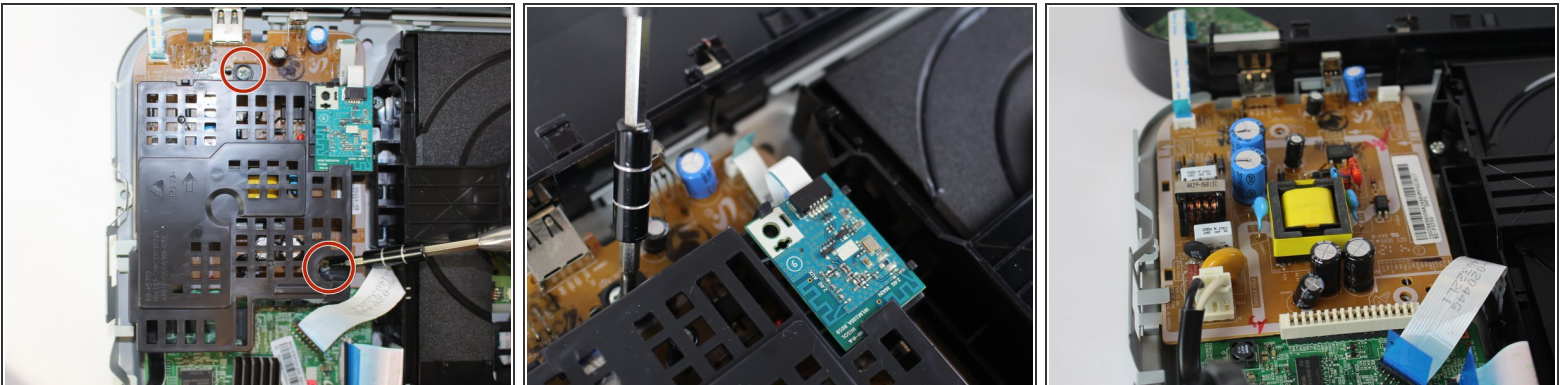
- [Phillips #0 Screwdriver](#) (1)
 - [Phillips #1 Screwdriver](#) (1)
 - [iFixit Opening Tool](#) (1)
-

Step 1 — Power Cord



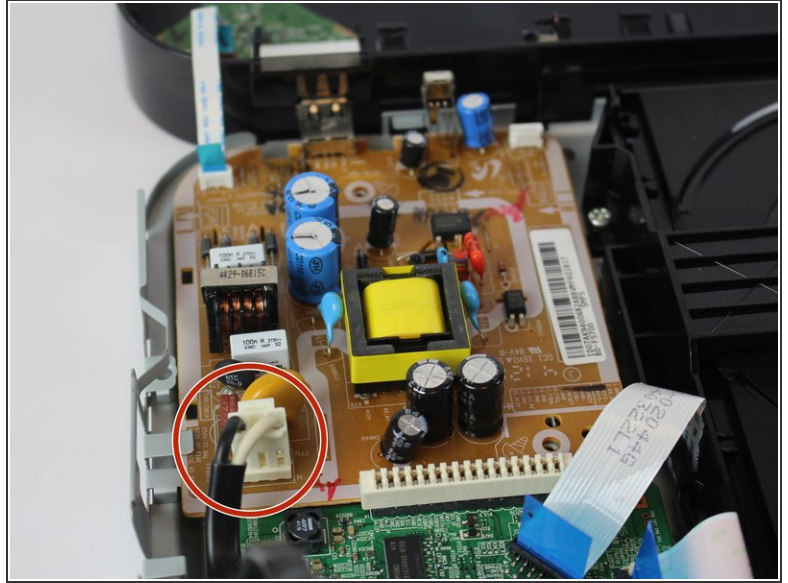
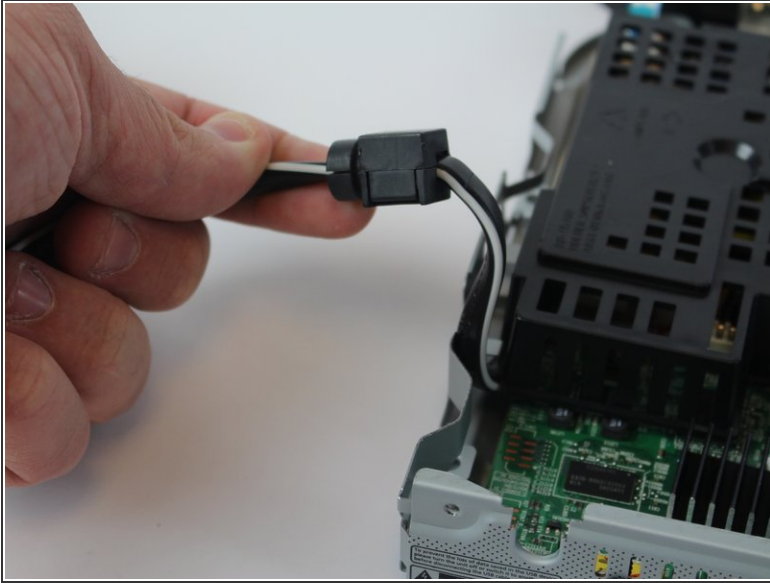
- Use Phillips 0 Screwdriver to remove two (2), 10 mm rear screws.
 - Use the iFixit opening tool to help separate the top plastic casing from the bottom metal casing.
- ⚠ When opening the device, be careful to not damage the ribbon cable circled in image 3.

Step 2



- Use Phillips 0 screwdriver to remove two (2), 10 mm screws from the plastic cover.
- Remove plastic cover from board.

Step 3



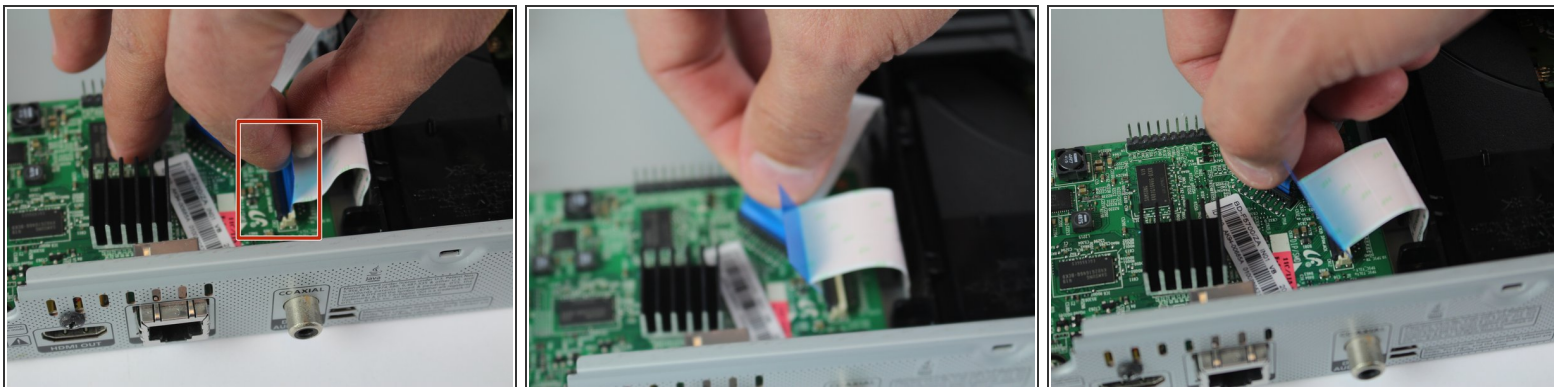
- Pull upward on back of the black and white wire to dislocate the black tab piece from device.
- To remove the cord from the device entirely, press on the white tab in the device and gently pull.

Step 4



- Insert the iFixit Opening tool into the black tab on the power cord, and use leverage to open the black tab.
- Pull the tab off the wire so that it can be placed on the replacement cord.

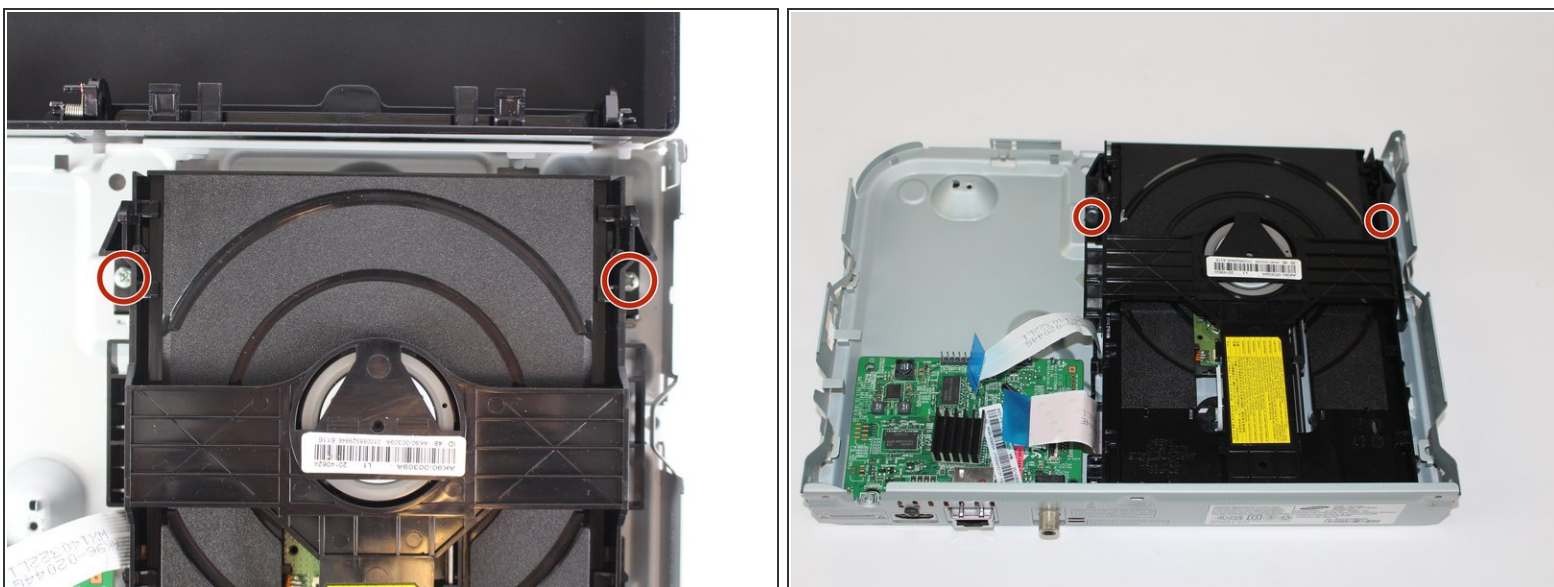
Step 5 — Disc Reader



- Firmly grip the hard plastic tab attached to the base and pull upwards.

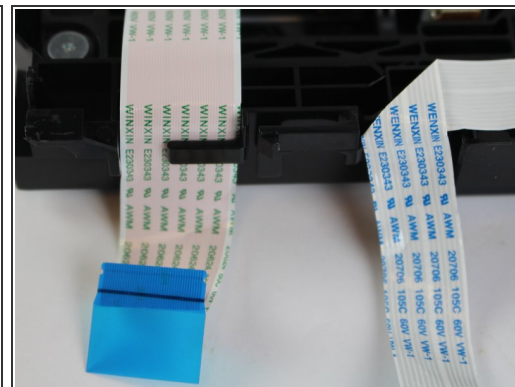
⚠ It is important to not tear the ribbon cables.

Step 6



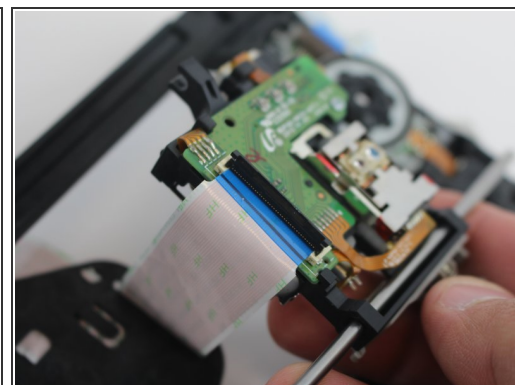
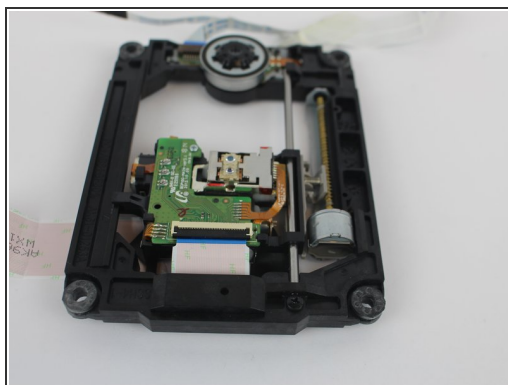
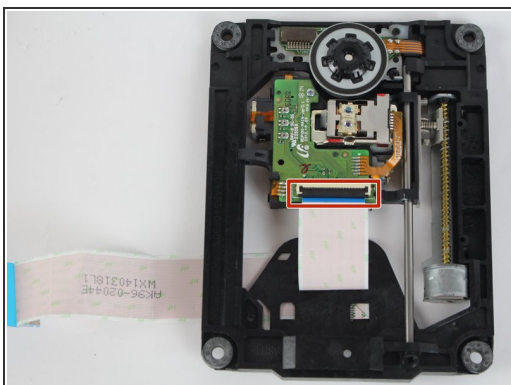
- Remove the two 7mm screws with a Phillips #1 screwdriver.

Step 7



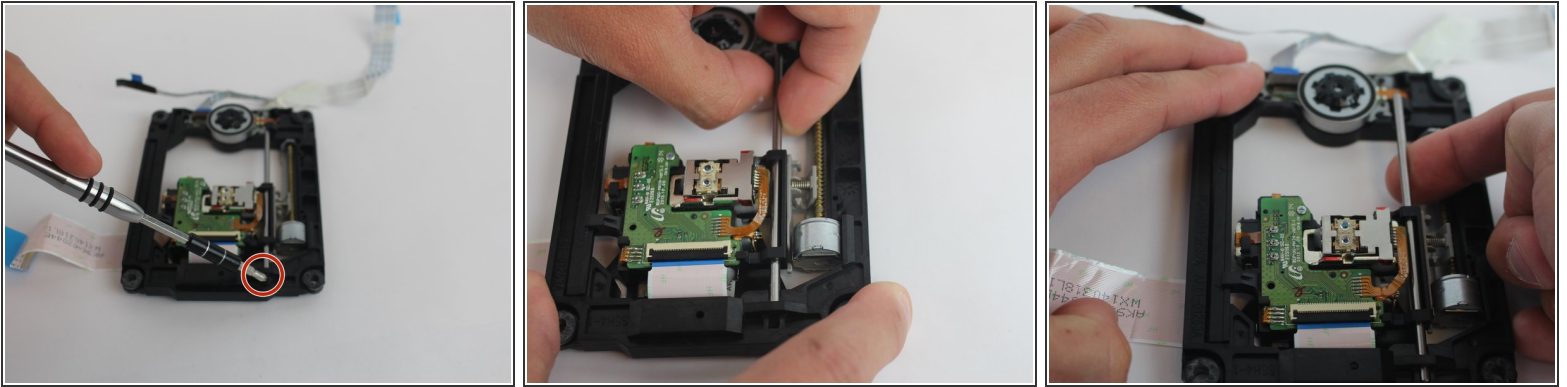
- Pinch both tabs on the side of the disc tray, push towards the front, and lift the disc tray out to remove.

Step 8



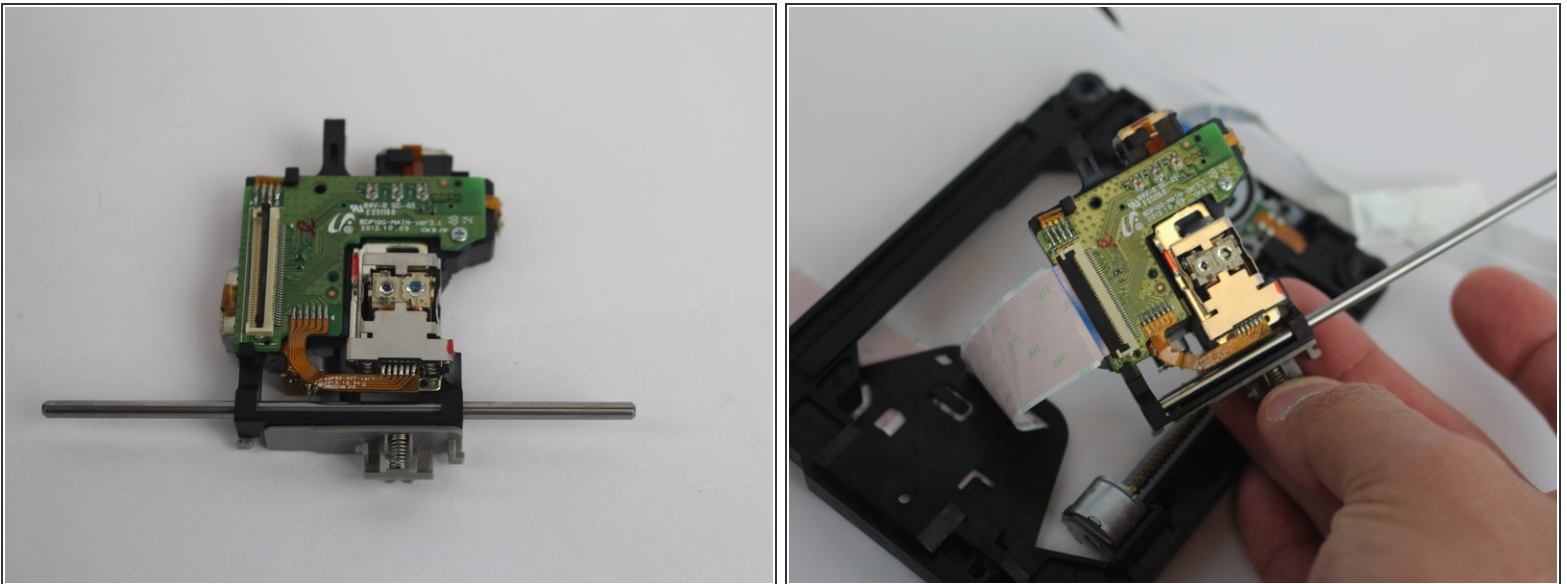
- Flip up the black locking tab on the ZIF connector.

Step 9



- Remove the 10 mm screw using a Phillips #1 screwdriver.
- Remove the small metal bar by pulling it outwards.

Step 10



- Flip the disc tray over so the laser points downward.
- Pull the disc reader out of the disc tray.

To reassemble your device, follow these instructions in reverse order.