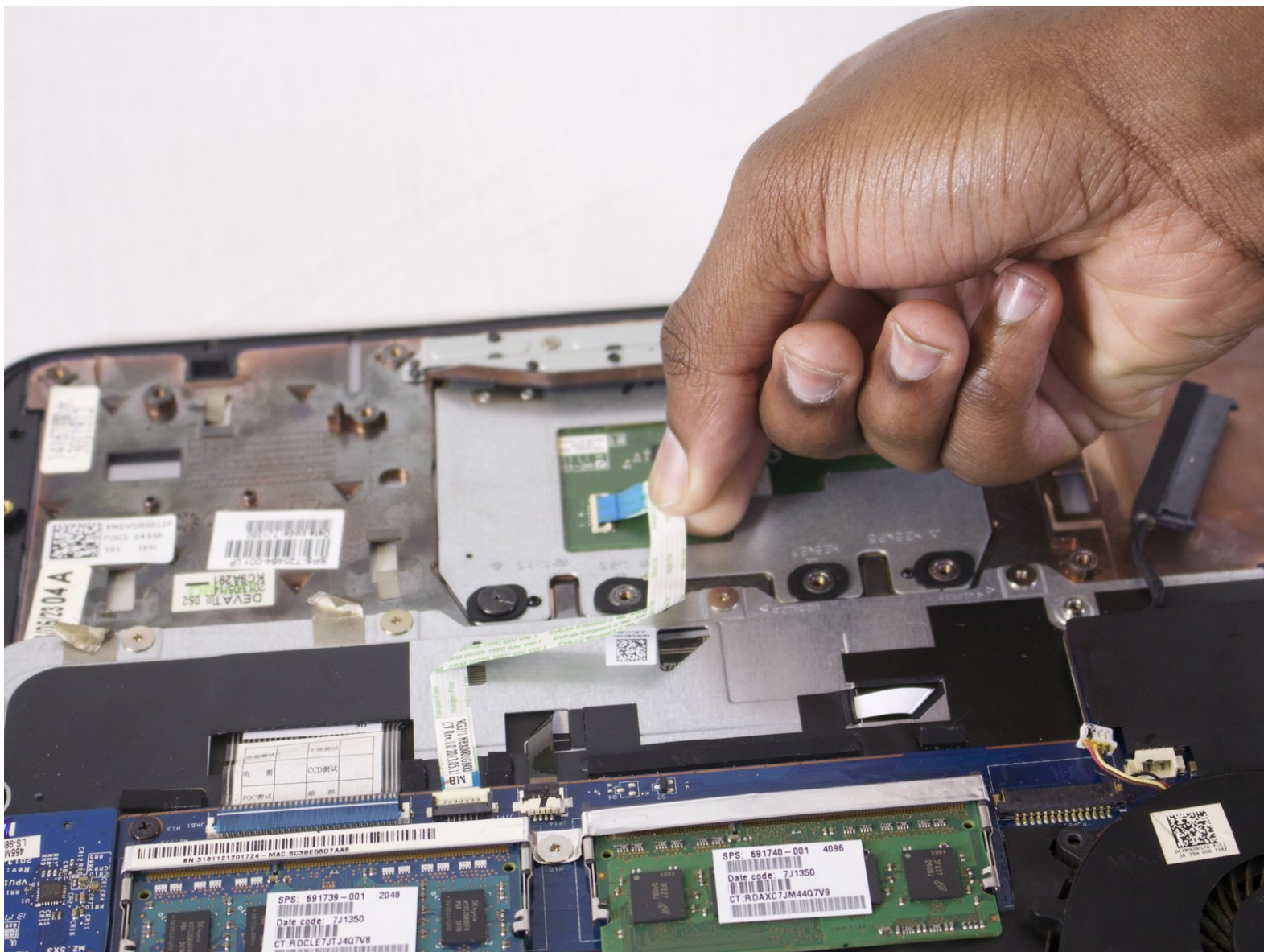




HP Envy Sleekbook m6-k010dx Keyboard Replacement

This guide provides instructions on how to replace the HP Envy Sleekbook m6-k010dx keyboard.

Written By: codi whittaker



INTRODUCTION

This device guide aims to replace a non-functioning HP Envy Sleekbook m6-k0101x keyboard. This guide should only be used if none of [these troubleshooting ideas](#) provide any desirable results. Before dismantling your device, ensure that your workspace is free from any open liquids or spare objects that might hinder this process.



TOOLS:

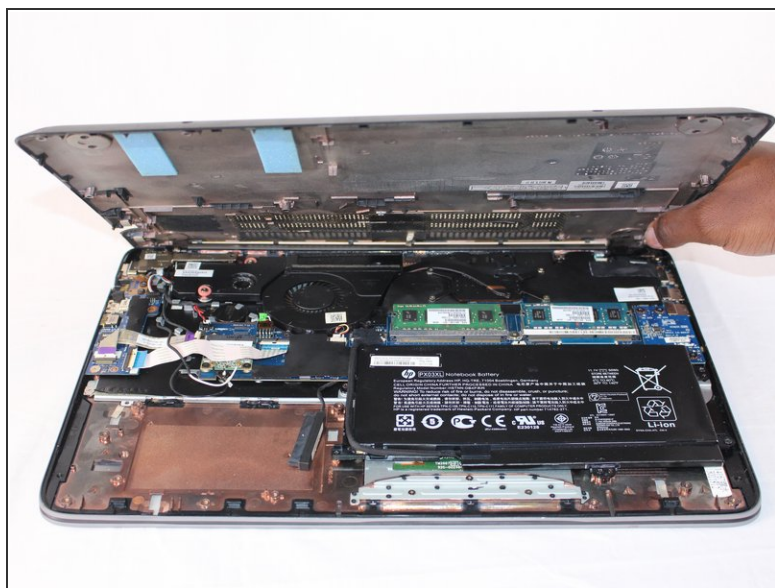
- [Phillips #00 Screwdriver](#) (1)
 - [iFixit Opening Tools](#) (1)
-

Step 1 — Battery



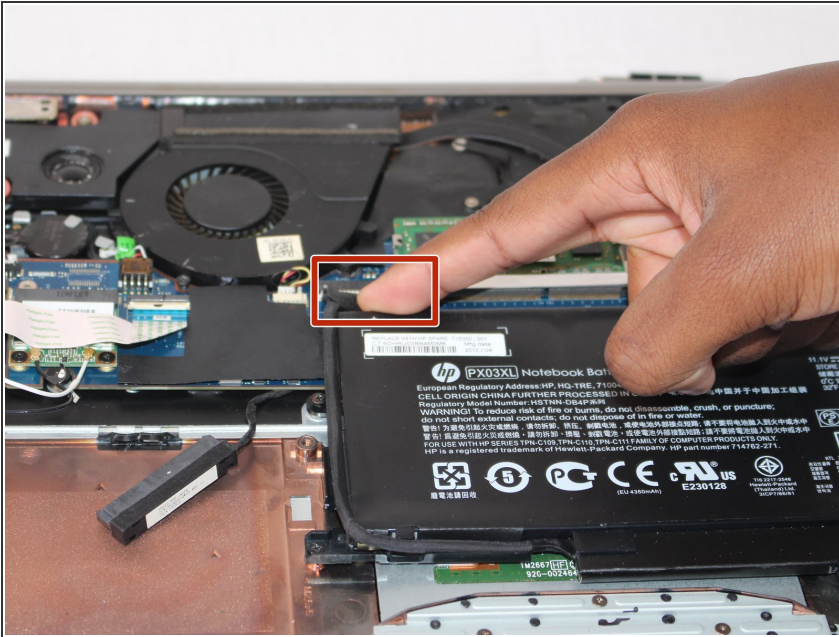
- Remove the twelve 9 mm Phillips #00 screws.

Step 2



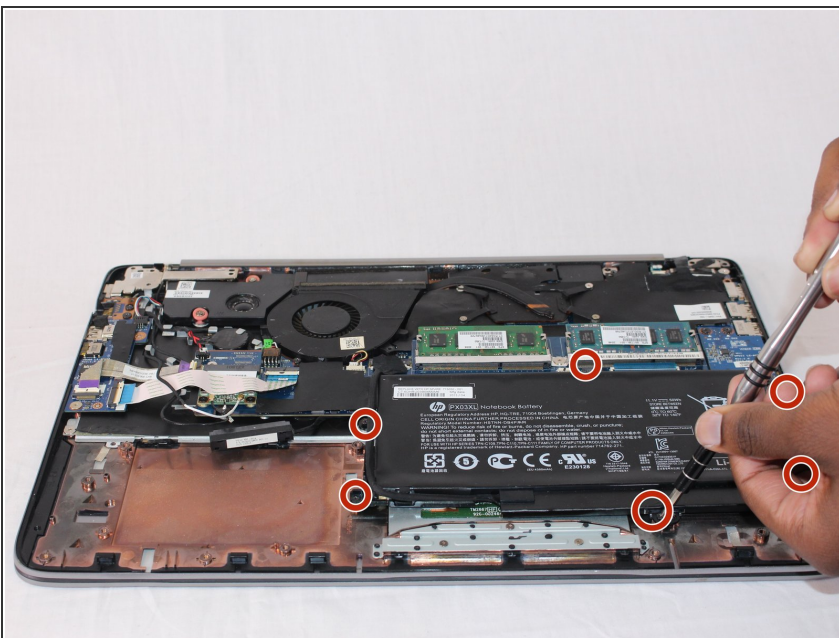
- Use the plastic opening tool and your hands to remove the bottom cover.

Step 3



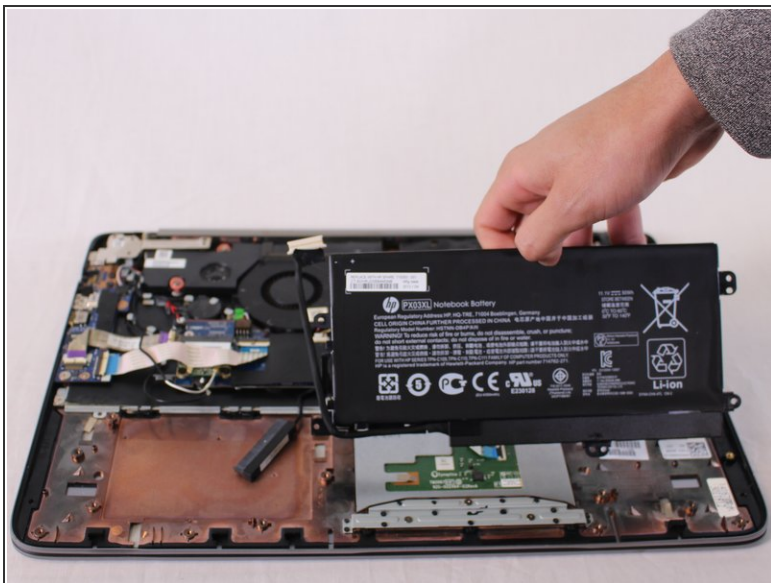
- Disconnect the battery power cable from the motherboard.

Step 4



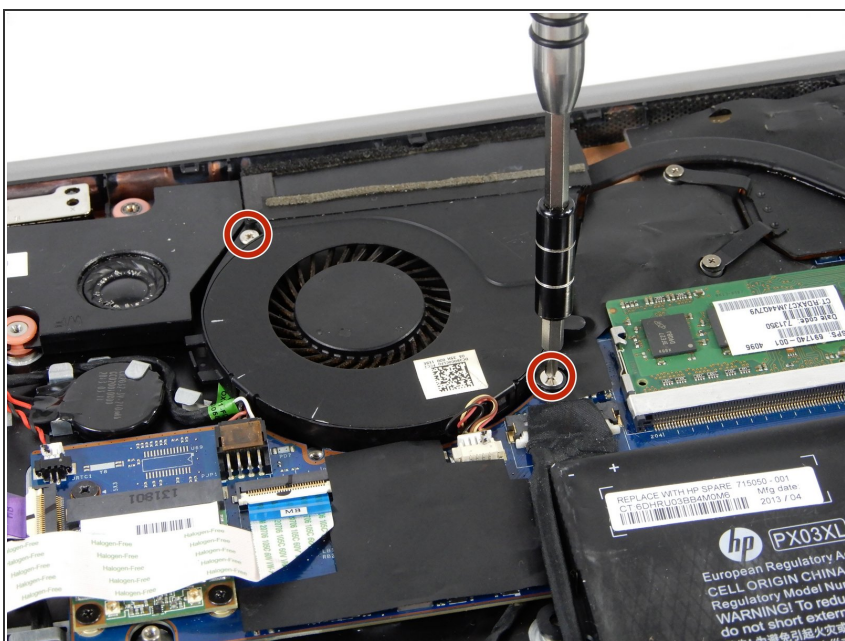
- Remove the six 6 mm Phillips #00 screws from the battery.

Step 5



- Lift the battery out of the laptop.

Step 6 — Fan



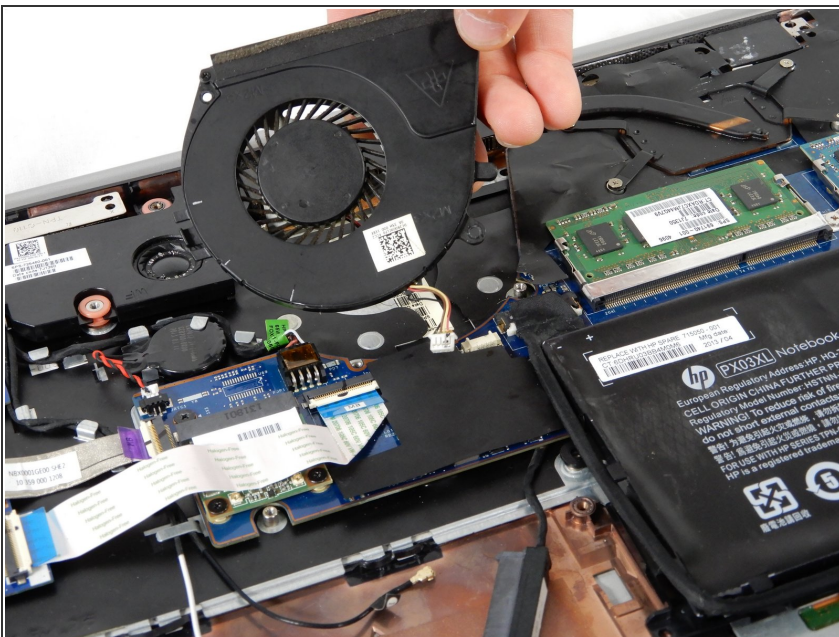
- Remove two 3mm Phillips #00 screws from the fan.

Step 7



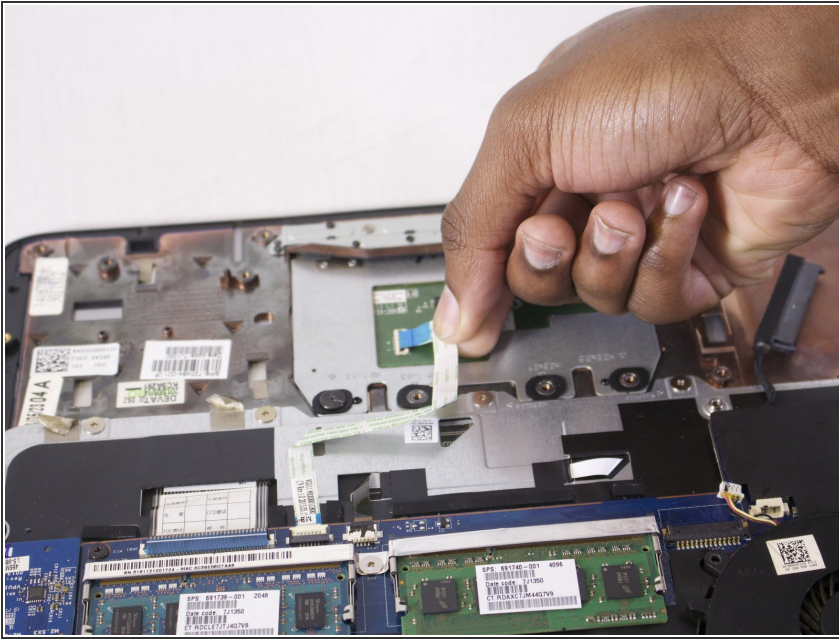
- Disconnect the fan cable by pulling it out of the motherboard socket.

Step 8



- Lift the fan upwards to remove it from the computer.

Step 9 — Keyboard



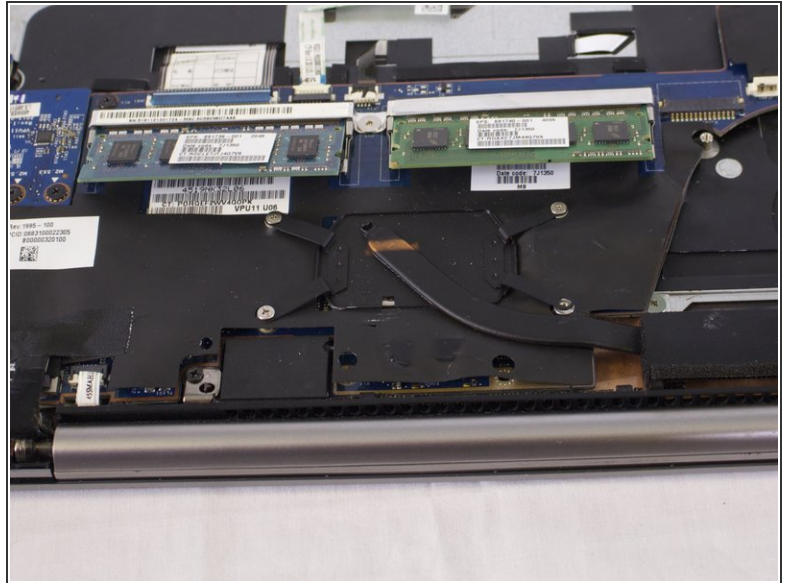
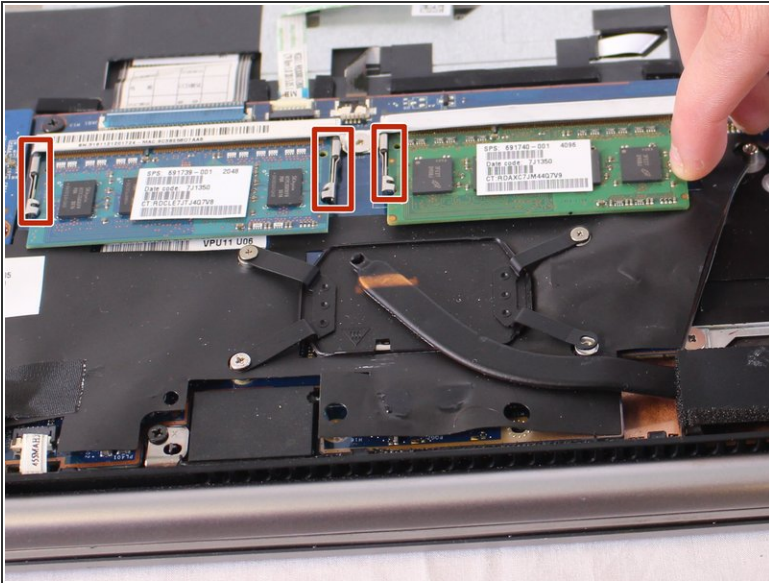
- Flip up the black tab on the ZIF connector and pull the blue and white flex cable connecting the touchpad to the motherboard.

Step 10



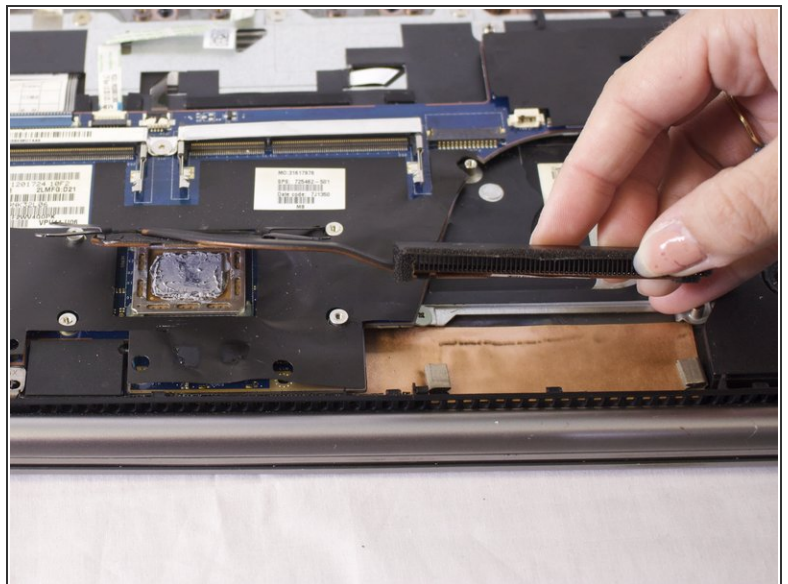
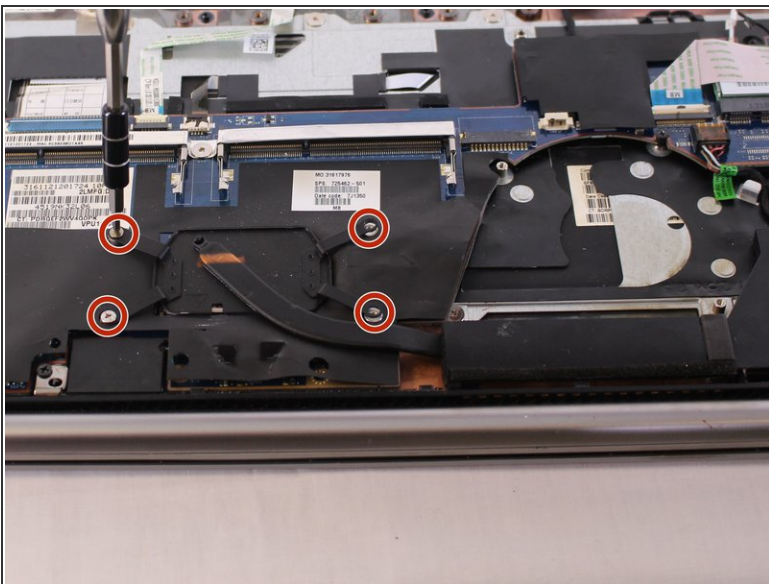
- Remove three 3mm Phillips #00 screws from the SD card board.
- Remove the SD card board.

Step 11



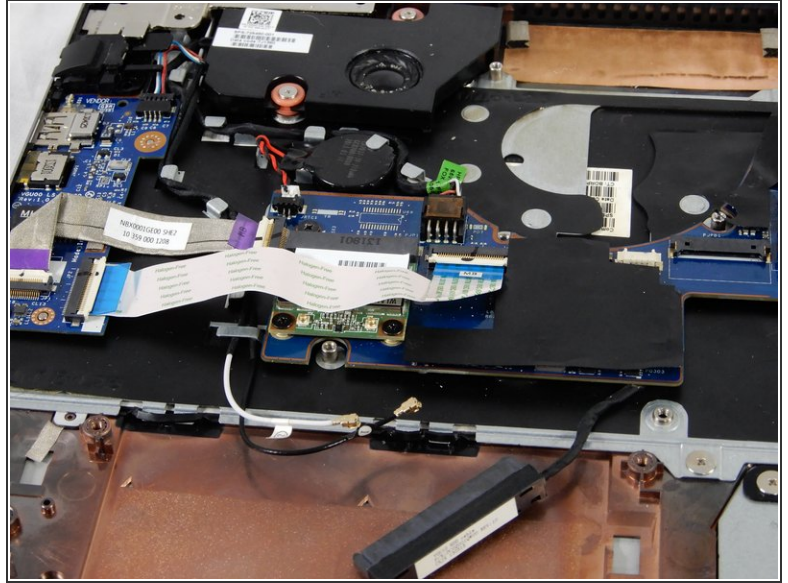
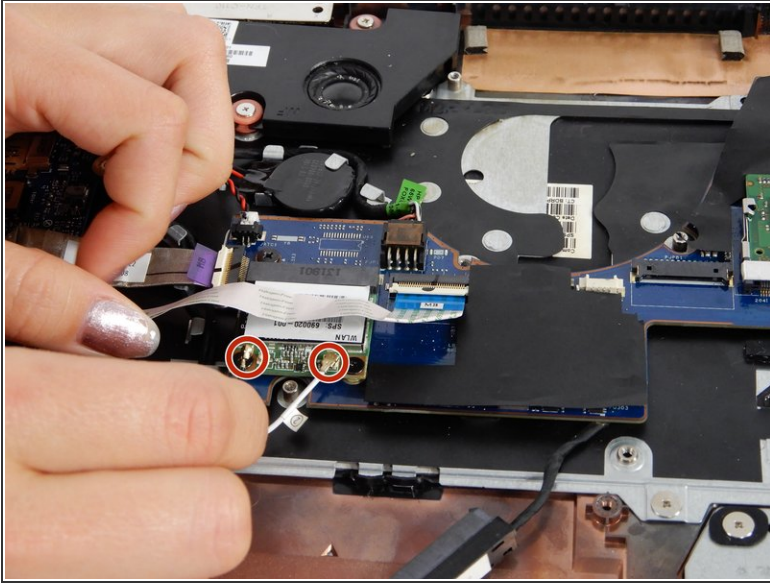
- In order to remove the RAM, pull each silver clip (one at a time) away from the RAM.
- The RAM chip should pop up. Gently remove the RAM from the motherboard.

Step 12



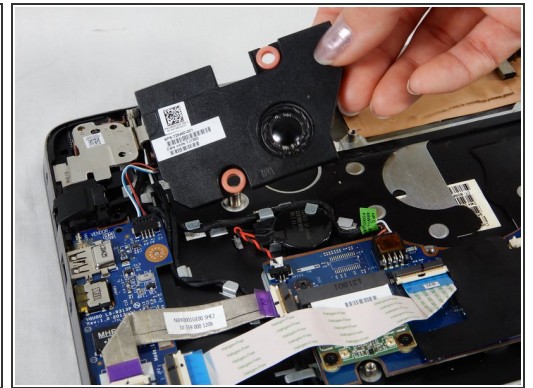
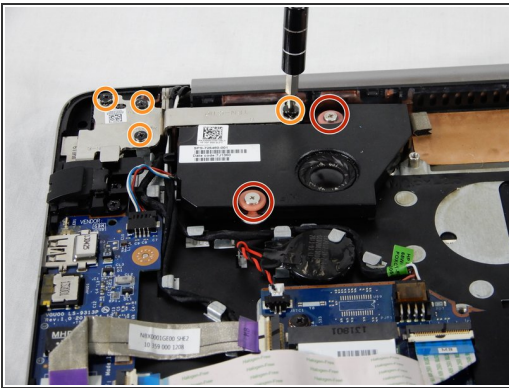
- Remove four 3mm Phillips #00 screws from the heatsink.
- Lift the heat sink out from the device and set it aside.

Step 13



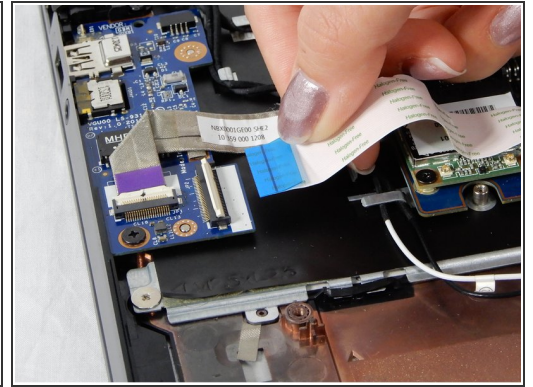
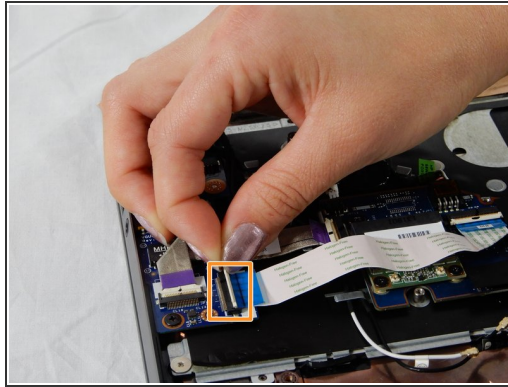
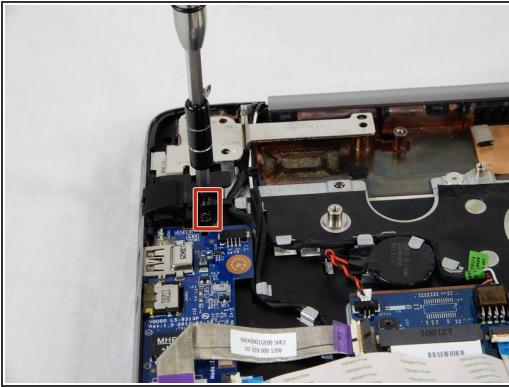
- Remove the black and white antenna wires from the Wi-Fi card.

Step 14



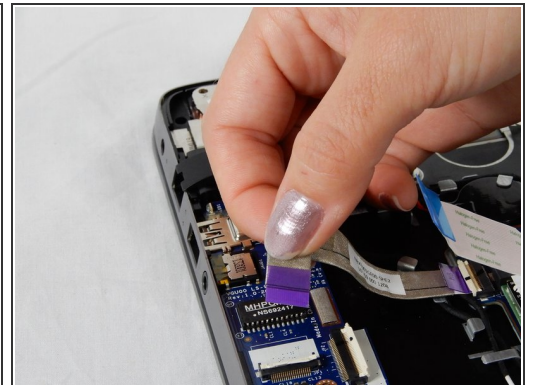
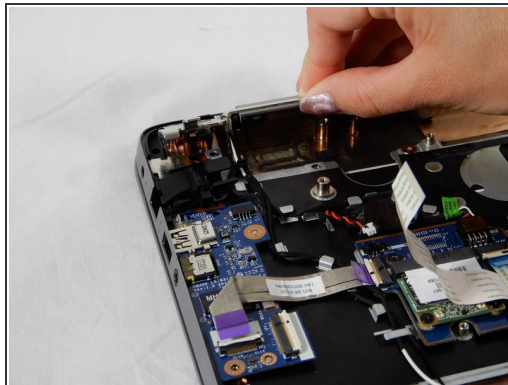
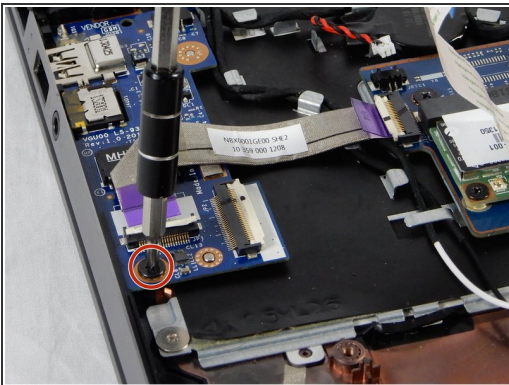
- Remove the two 3mm Phillips #00 screws that secure the speaker to the device.
- Remove the four 4mm Phillips #00 screws from the bracket.
- Locate the speaker cable connecting the speaker to the audio board. Gently tug on this cable to dislodge. Set the speaker aside.

Step 15



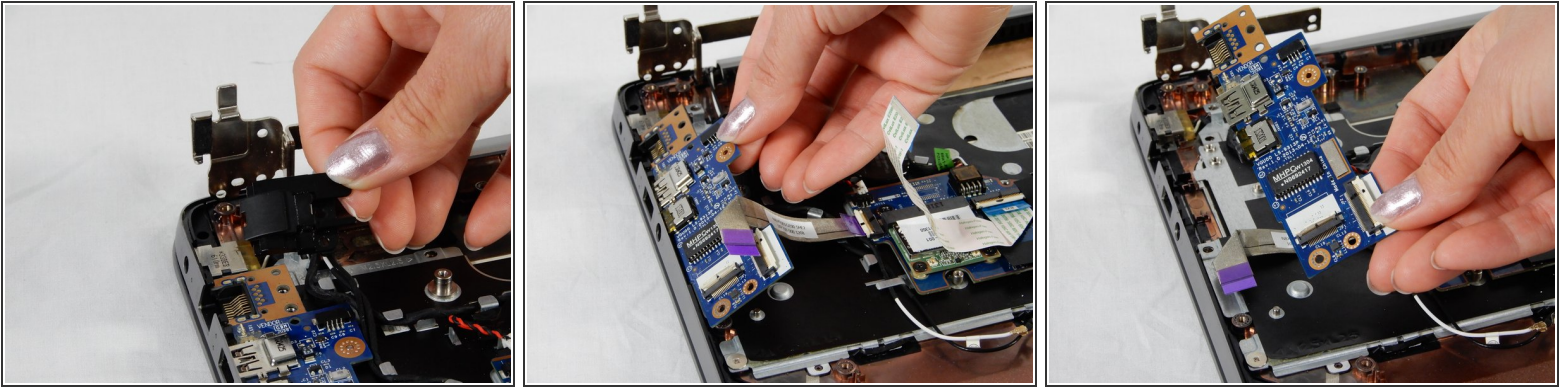
- Remove the two 3mm Phillips #00 screws that secure the RJ-45 module.
- Lift the white tab on the ZIF connector and pull the ribbon cable out.

Step 16



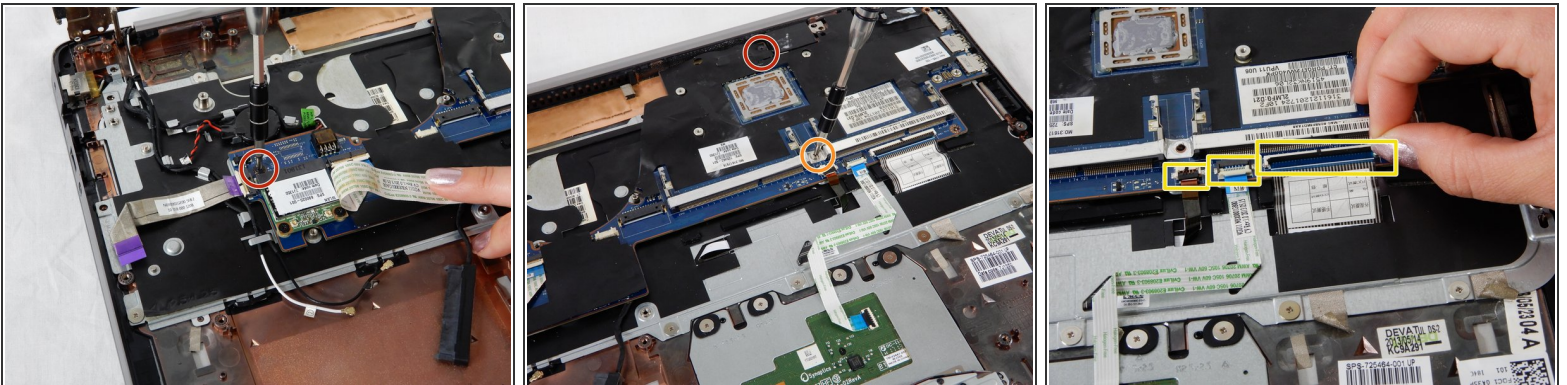
- Remove the 3mm Phillips #00 screw connecting the chip to the housing.
- Lift up silver bracket.
- Lift up the white flap on the ZIF connector and remove the purple ribbon cable.

Step 17



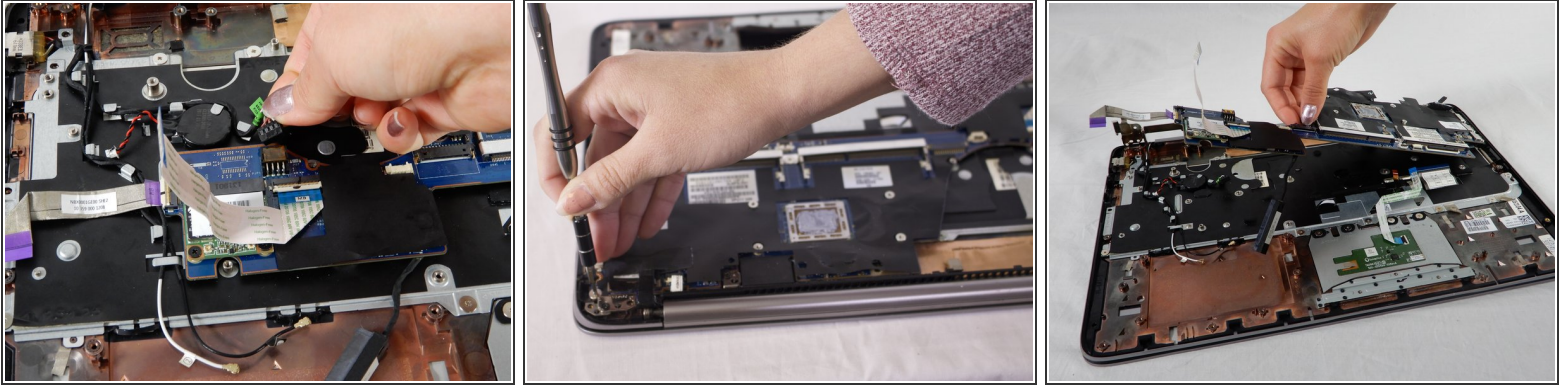
- Remove the cover for the RM-45 port.
- Gently lift and remove the chip from its housing.

Step 18



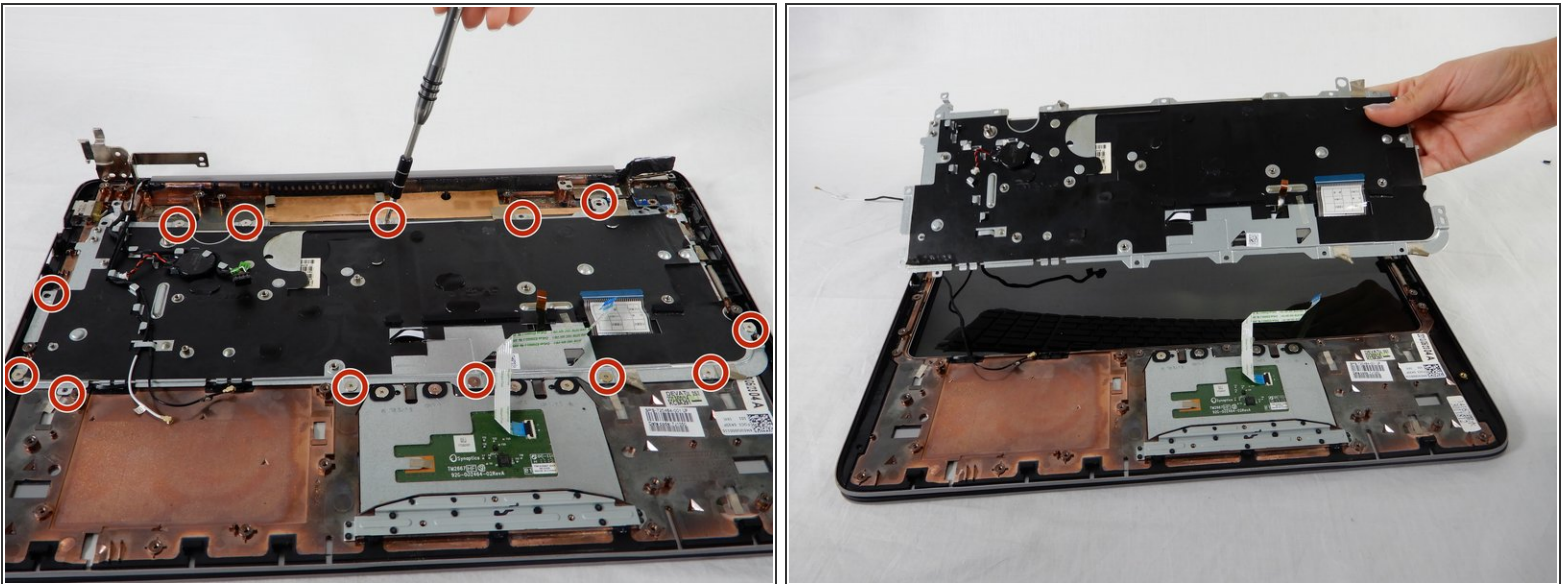
- Remove the 4mm Phillips #00 screws.
- Remove the silver 3mm Phillips 3 mm screw.
- Lift all three black flaps in the ZIF connectors and remove the attached ribbon cables.

Step 19



- Use your hand and gently remove the connector to the back up battery for the motherboard.
- Remove the four 4mm Phillips #00 screws from the motherboard.
- Lift the board at an angle and pull outwards to dislodge it from the device.

Step 20



- Remove the thirteen silver 3mm Phillips #00 screws that secure the keyboard to the frame.
- Lift up the keyboard from the bracket and pull outwards to remove the keyboard from the device.

To reassemble your device, follow these instructions in reverse order.

This document was generated on 2020-11-21 06:49:31 PM (MST).

