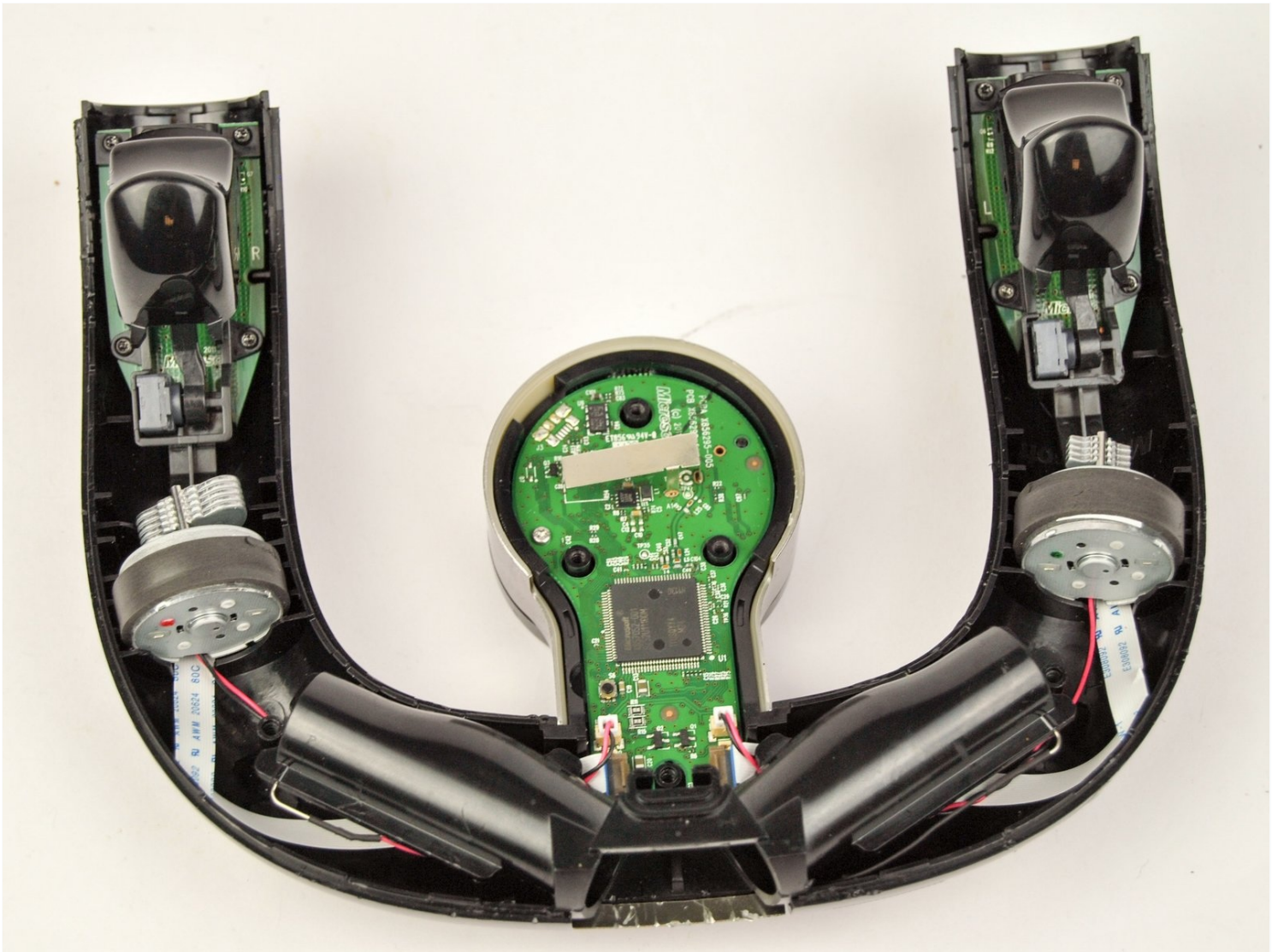




Xbox 360 Wireless Speed Wheel Back Panel Replacement

The front and back panels of the controller...

Written By: lauren paganella



INTRODUCTION

The front and back panels of the controller must be separated in order to expose the inside of the controller, this step must be done to replace all internal parts of the controller (except for the batteries).

TOOLS:

Spudger (1)

TR8 Torx Security Screwdriver (1)

TR9 Torx Security Screwdriver (1)

T6 Torx Screwdriver (1)

Tweezers (1)

Step 1 — Battery



- Turn the controller on its backside and push the "eject" button to discharge the battery compartment door on the bottom of the controller.
- Pull the two AA batteries out.

Step 2 — Back Panel



- Remove the holographic Microsoft sticker with the precision tweezers to reveal a small screw.
- Use a T6 Torx screwdriver to remove the 1.5mm screw.

Step 3



- Insert a spudger and pry at these three locations to detach the middle cover.
- Pull off the middle piece cover to reveal three screws.
- Use a T8 Torx screwdriver to remove the three 2.3mm screws.
- Remove the cover.

Step 4



- Remove the two 90mm screws with a T8 Torx screwdriver.
- Lift up the silver middle piece to remove.

Step 5



- Use a spudger to remove the silver prong.
- With the spudger, pinch the metal spring and slowly pull up to remove.
- Use the spudger to remove eject button.
- Remove the screw holding in the eject button with a T8 Torx screwdriver.

Step 6



⚠ This step is very difficult and may require a third hand.

- Pull the two halves apart at the bottom to detach the two latches that are holding the front and back panels together.
- Start with one side of the controller (left or right).
- Slide the spudger towards the end of the handles and pry the two halves apart. Do the same for the opposite side.
- ① The white circular caps at the top of the controller will pop off by applying light force.
- Pull the front and back panels apart to separate them and expose the inside of the controller.

To reassemble your device, follow these instructions in reverse order.