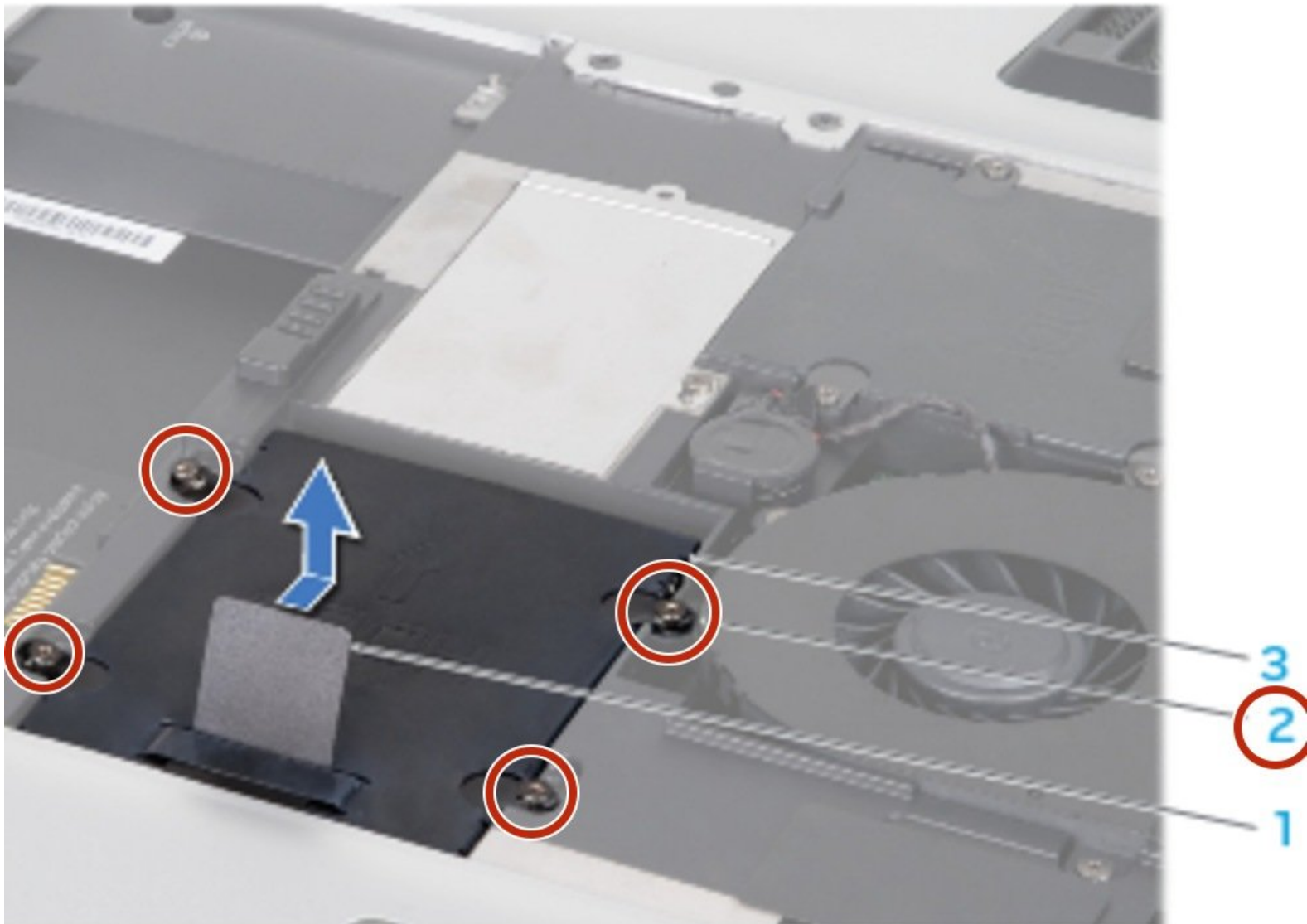




Dell Alienware M17x R2 Hard Drive Replacement

Written By: Terrence15



INTRODUCTION

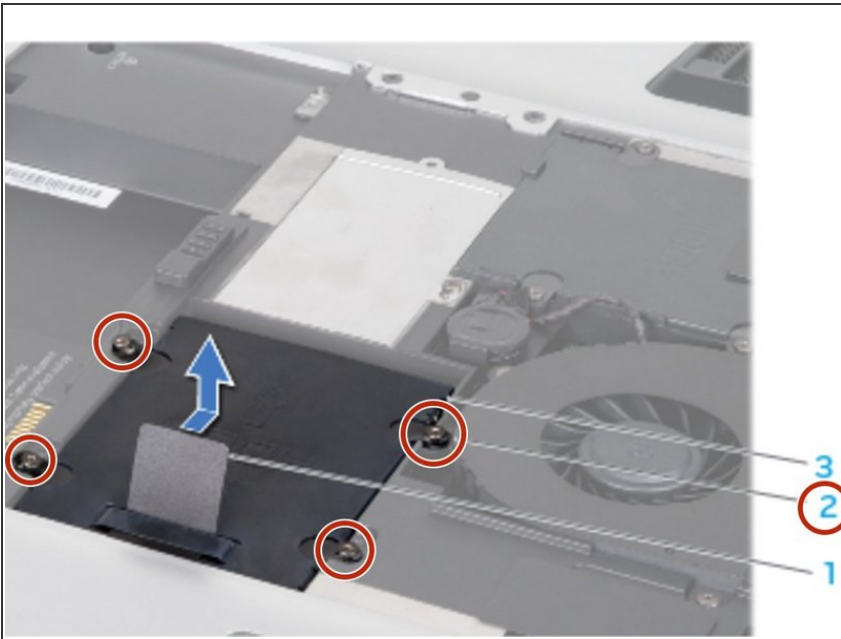
In this guide, we will show you how to remove and replace the Hard Drive.






TOOLS:

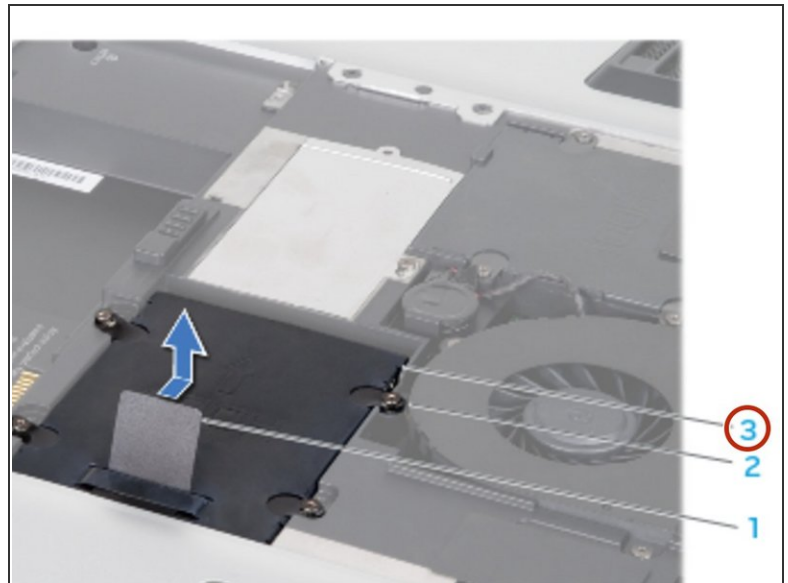
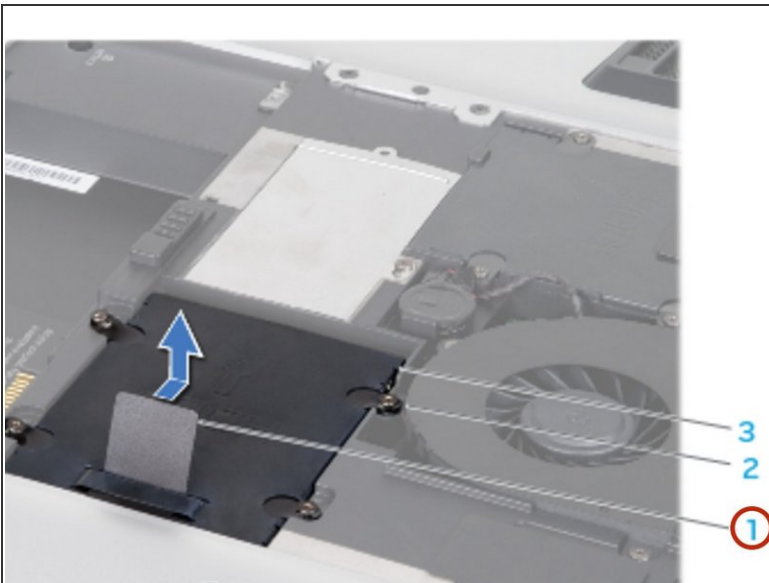
- [Phillips #0 Screwdriver](#) (1)
-

Step 1 — Loosen the Four Screws



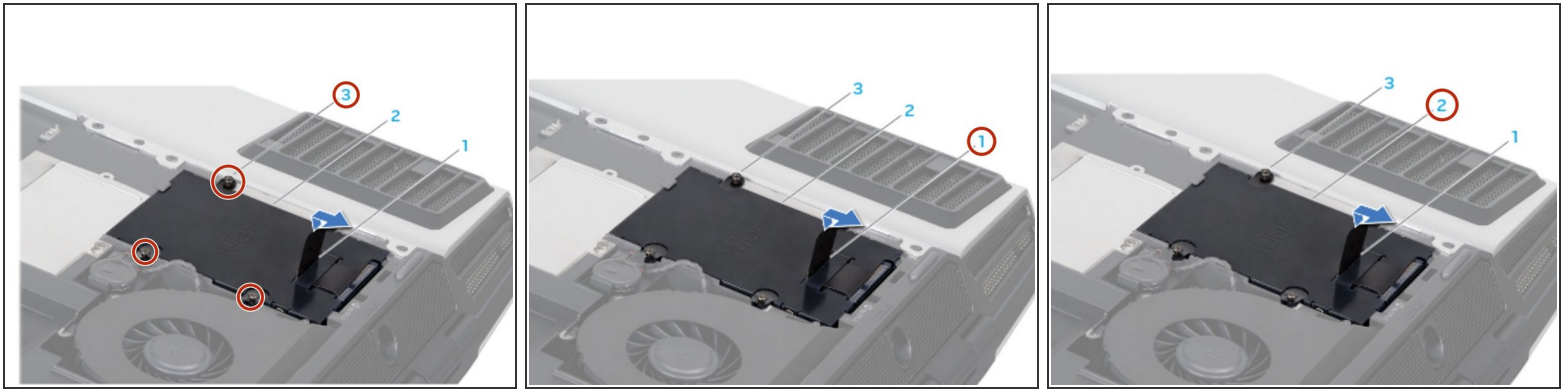
-  **WARNING:** Before working inside your computer, read the safety information that shipped with your computer.
-  **WARNING:** If you remove the hard drive from the computer when the drive is hot, do not touch the metal housing of the hard drive.
-  **CAUTION:** Hard drives are extremely fragile. Exercise care when handling the hard drive.
- Loosen the four captive screws that secure the primary hard drive (HDD0).

Step 2 — Sliding the Hard-Drive



- Using the pull tab, slide the primary hard drive (HDD0) towards the back of the hard drive bay and lift it out.

Step 3 — Removing Secondary Hard-Drive



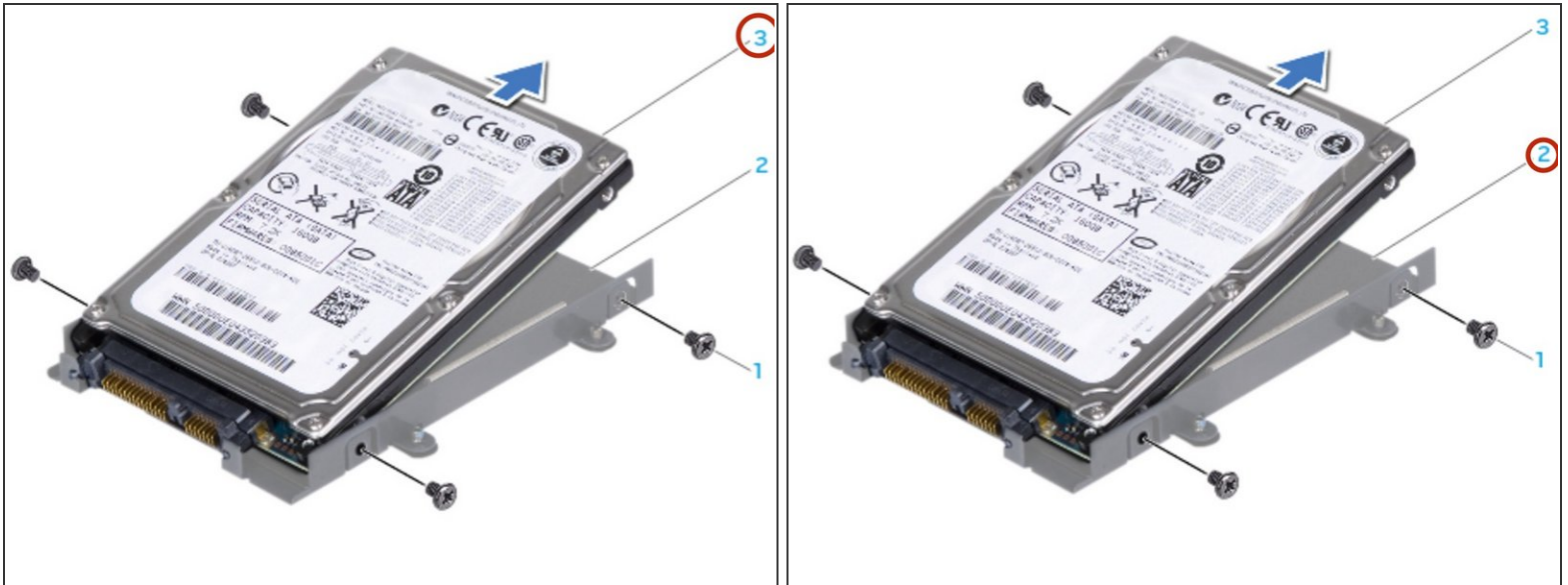
- If your computer has a secondary hard drive (HDD1): **1.** Loosen the four captive screws on the secondary hard drive (HDD1). **2.** Using the pull tab, lift the secondary hard drive (HDD1) out of the hard drive bay.

Step 4 — Remove the Screws



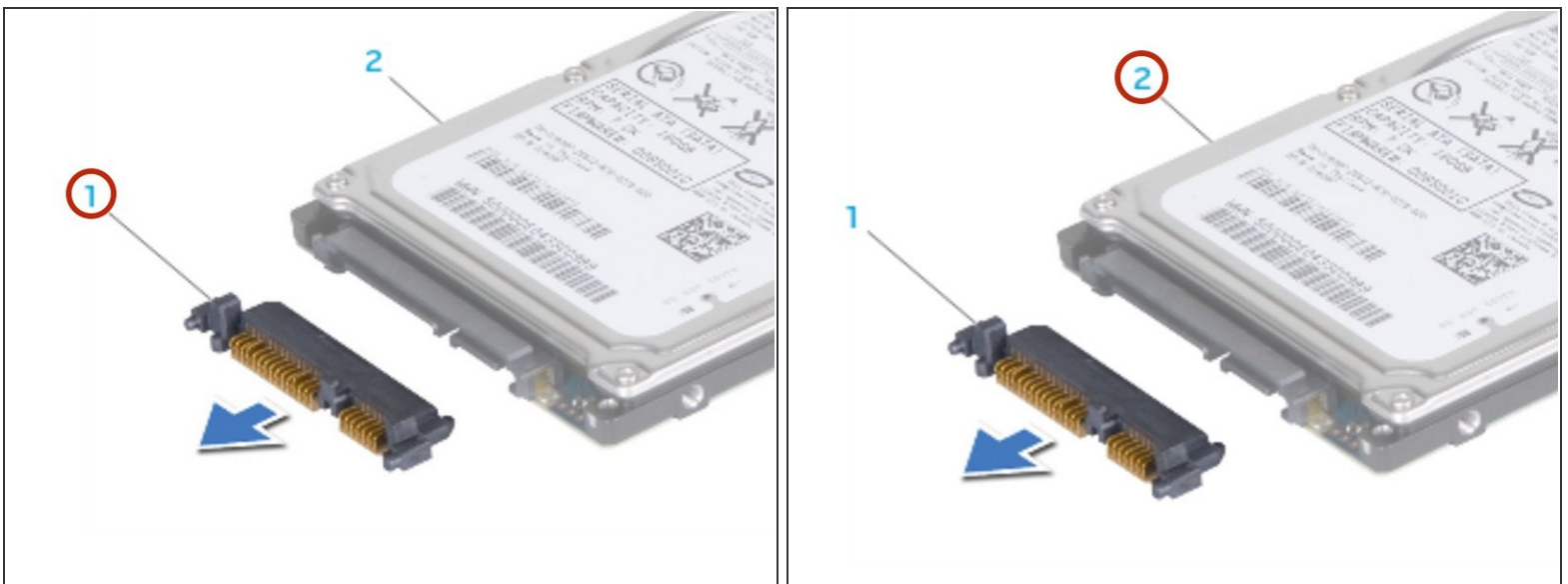
- Remove the four screws that secure the hard drive bracket to the hard drive.

Step 5 — Sliding the Hard-Drive



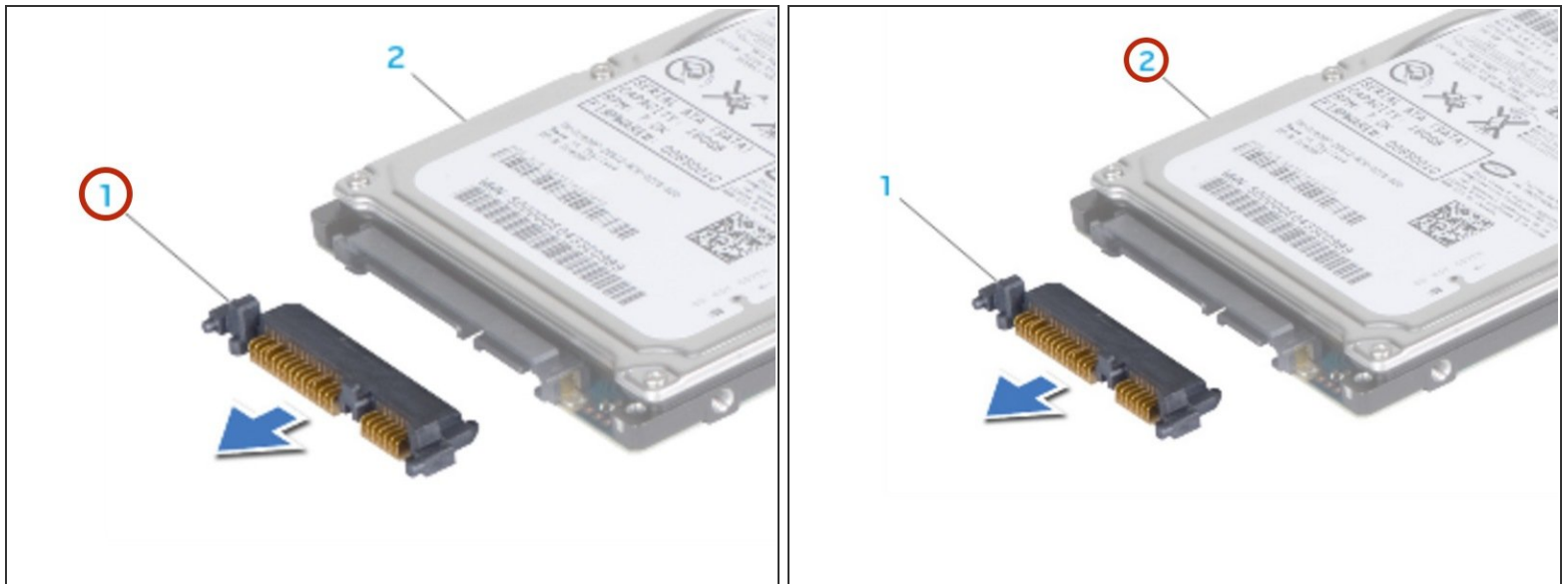
- Slide the hard drive out of the hard drive bracket.

Step 6 — Remove the Interposer



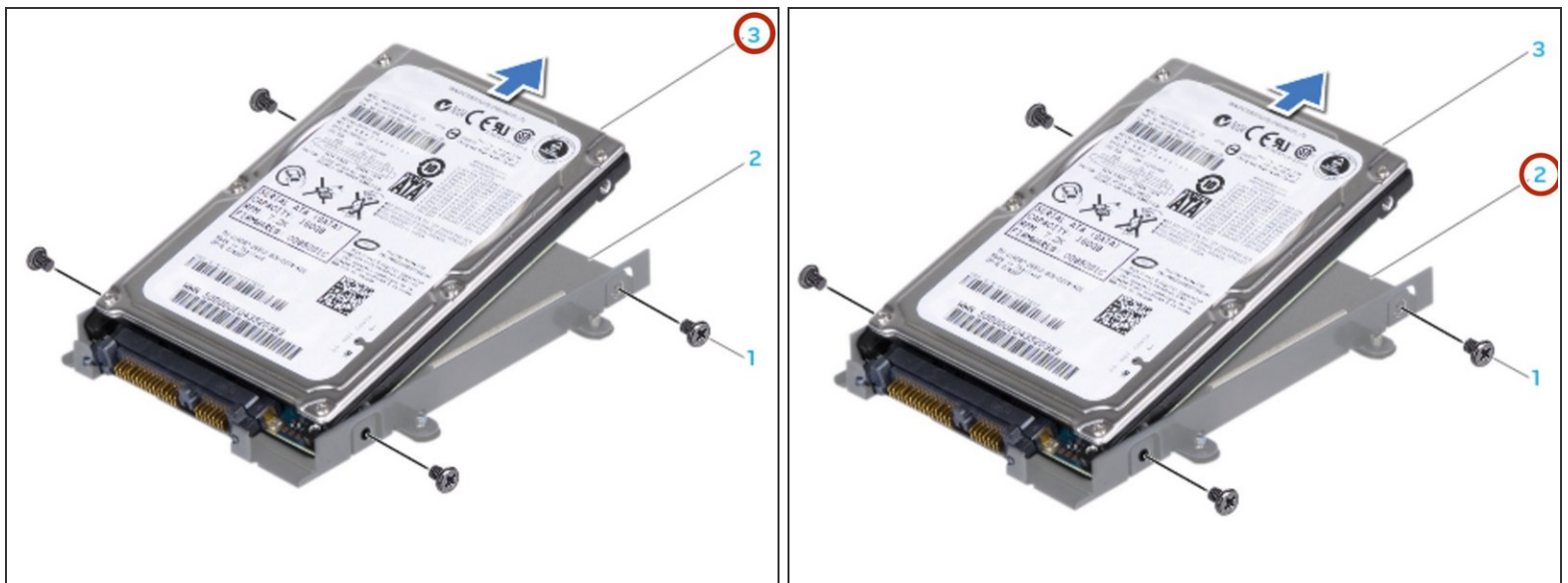
- Remove the interposer from the secondary hard drive (HDD1), if applicable.

Step 7 — Connecting the Interposer



- Connect the NEW interposer to the secondary hard drive (HDD1), if applicable.

Step 8 — Sliding the Hard-Drive



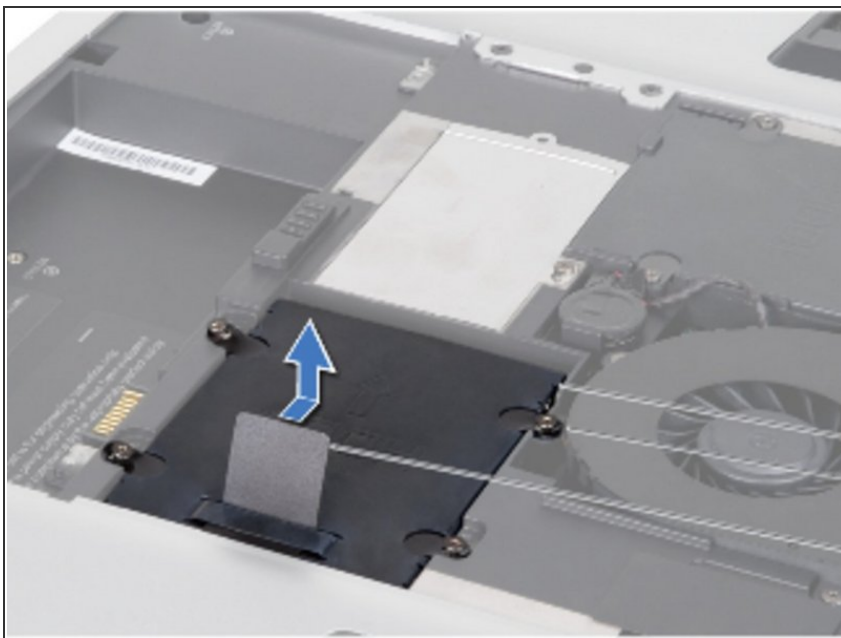
- Slide the hard drive into the hard drive bracket.

Step 9 — Replace the Screws



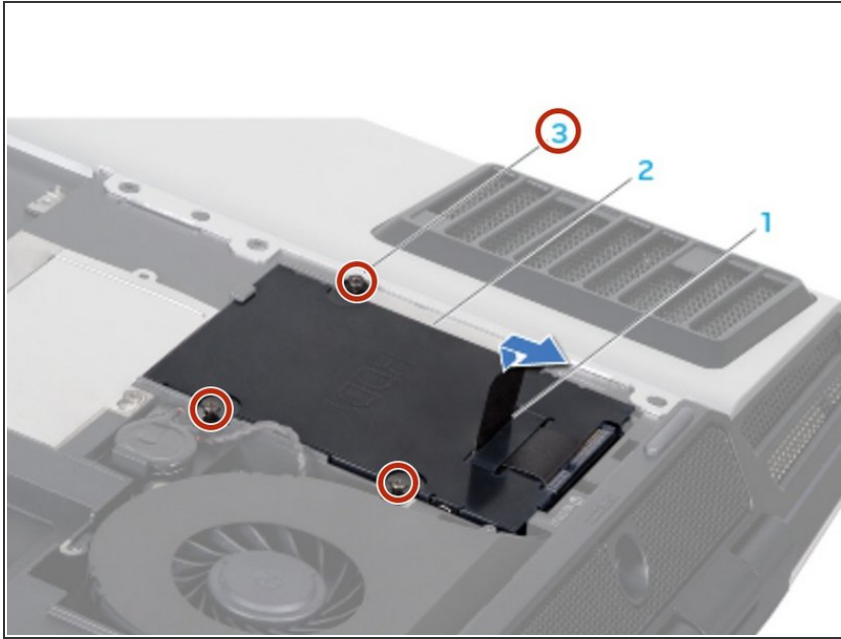
- Replace the four screws that secure the hard drive bracket to the hard drive.

Step 10 — Placing the Hard Drive



- Place the hard drive in the hard drive bay.

Step 11 — Align and Tighten the Screws



- If your computer has a secondary hard drive (HDD1), align and tighten the four captive screws that secure the hard drive to the hard drive bay.
- Align and and tighten the four captive screws that secure the primary hard drive (HDD0) to the hard drive bay.

To reassemble your device, follow these instructions in reverse order.