



Xbox 360 Wireless Speed Wheel A, B, X, Y Buttons Replacement

Are your A, B, X, Y buttons busted or not...

Written By: Maryn Jones



INTRODUCTION

Are your A, B, X, Y buttons busted or not working from an epic game and or rage? Have they lost sensitivity over time? Don't get upset, they can be replaced! This guide will show you how to open the controller and replace the colored A, B, X, Y buttons.

TOOLS:

Spudger (1)

TR8 Torx Security Screwdriver (1)

TR9 Torx Security Screwdriver (1)

T6 Torx Screwdriver (1)

Tweezers (1)

Step 1 — Battery



- Turn the controller on its backside and push the "eject" button to discharge the battery compartment door on the bottom of the controller.
- Pull the two AA batteries out.

Step 2 — Back Panel



- Remove the holographic Microsoft sticker with the precision tweezers to reveal a small screw.
- Use a T6 Torx screwdriver to remove the 1.5mm screw.

Step 3



- Insert a spudger and pry at these three locations to detach the middle cover.
- Pull off the middle piece cover to reveal three screws.
- Use a T8 Torx screwdriver to remove the three 2.3mm screws.
- Remove the cover.

Step 4



- Remove the two 90mm screws with a T8 Torx screwdriver.
- Lift up the silver middle piece to remove.

Step 5



- Use a spudger to remove the silver prong.
- With the spudger, pinch the metal spring and slowly pull up to remove.
- Use the spudger to remove eject button.
- Remove the screw holding in the eject button with a T8 Torx screwdriver.

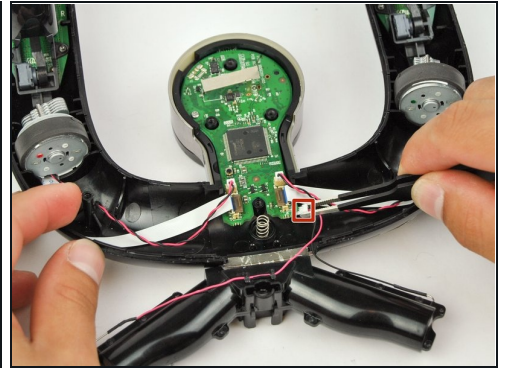
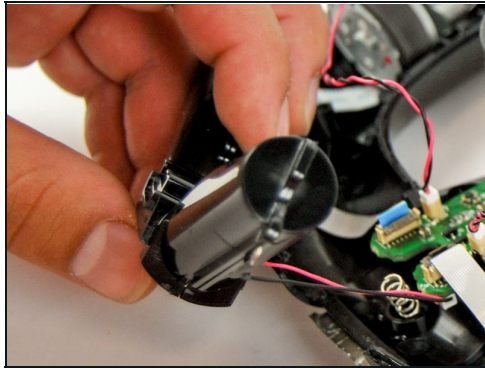
Step 6



⚠ This step is very difficult and may require a third hand.

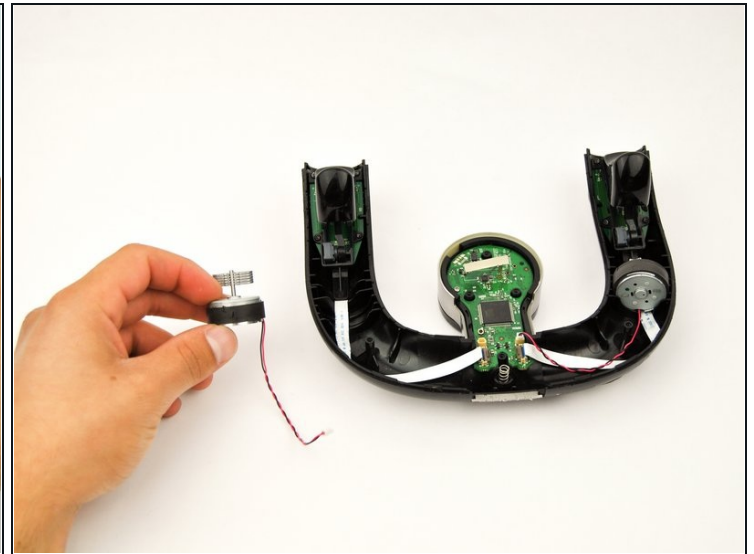
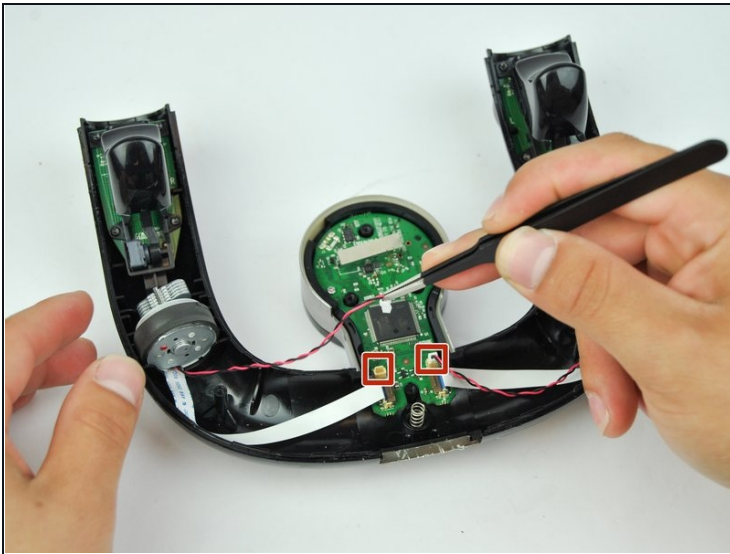
- Pull the two halves apart at the bottom to detach the two latches that are holding the front and back panels together.
- Start with one side of the controller (left or right).
- Slide the spudger towards the end of the handles and pry the two halves apart. Do the same for the opposite side.
- ① The white circular caps at the top of the controller will pop off by applying light force.
- Pull the front and back panels apart to separate them and expose the inside of the controller.

Step 7 — Battery Compartment



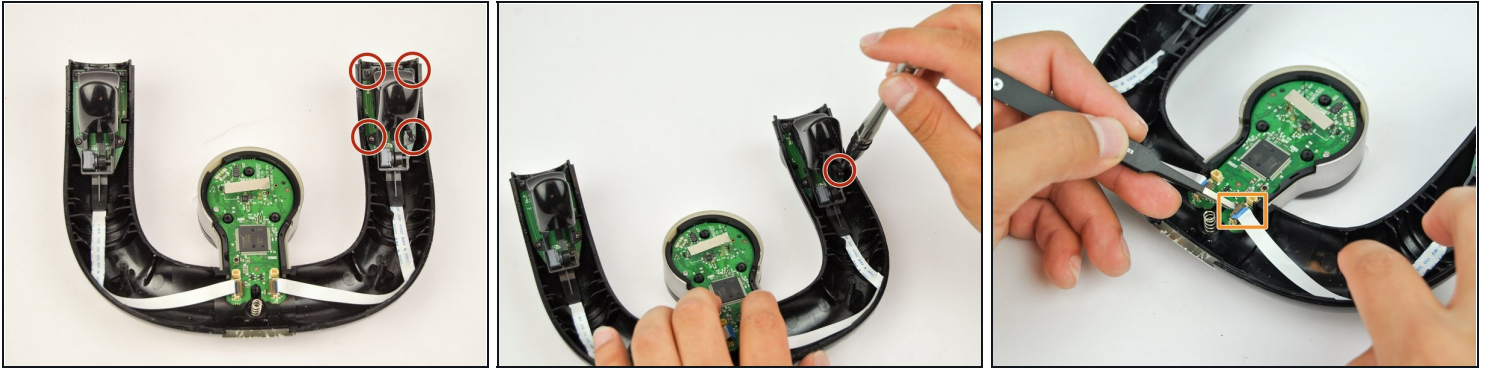
- Lift the battery compartment out of the controller and set it outside of the controller.
⚠ Do not yank, stress, or pull on the wires for removal.
- Use the precision tweezers to pull out the red and black wire attached to the white plug at the bottom side of the circuit board.

Step 8 — Rumble Motor



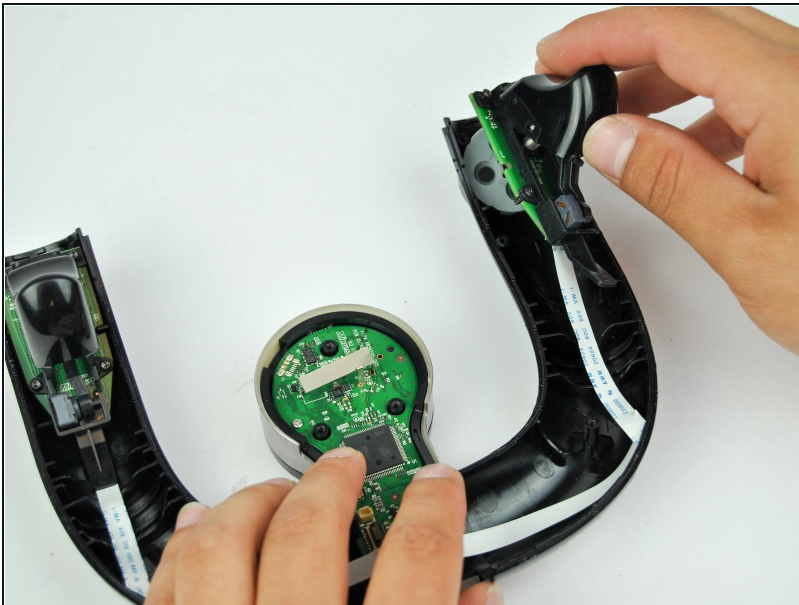
- Use precision tweezers to remove the red and black wires that are attached to the circuit board.
- ① The rumble motors will easily lift out of the controller once the wires are detached.

Step 9 — Left and Right Triggers



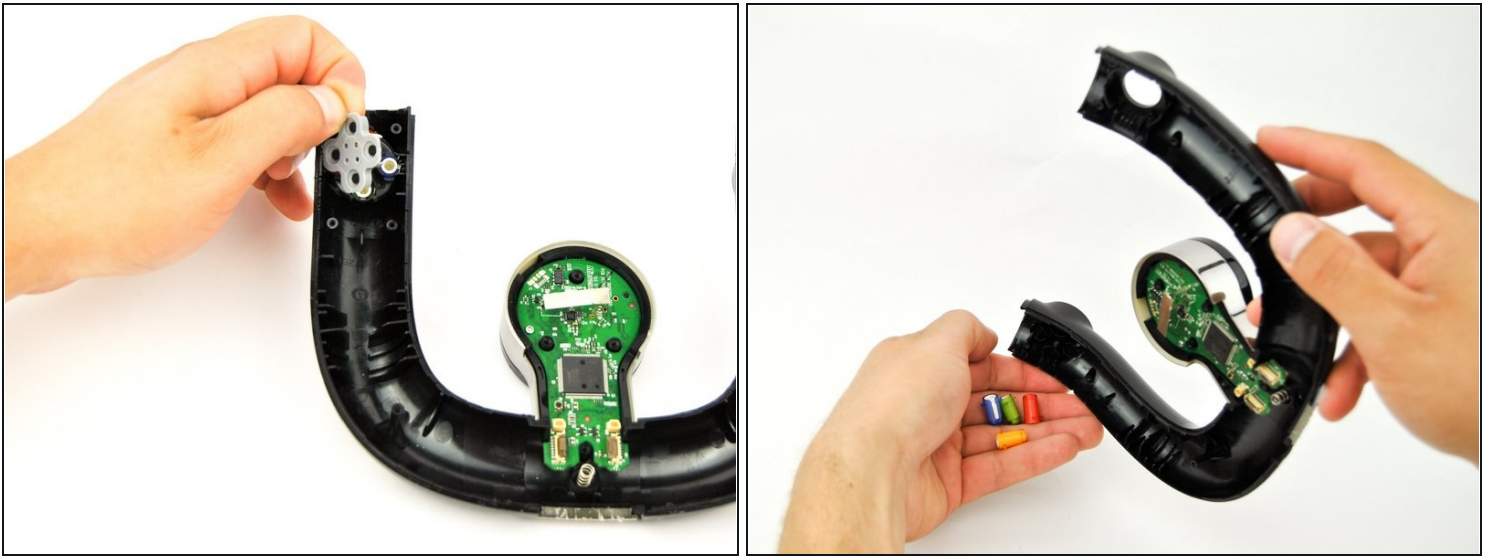
- Use a T6 Torx screwdriver to remove the four 2.3mm screws.
- Lift up the black locking tab on the ZIF connector to release the ribbon cable.

Step 10



- Lift up the trigger to remove it from the controller.
- ① The trigger is made up of three pieces: the trigger, a circuit board, and a ribbon cable.
- Repeat for the other trigger.

Step 11 — A, B, X, Y Buttons



- Remove the silicon pad on the left side to expose the A, B, X, Y buttons.
- ① The silicon pad held the buttons in place, so without it the buttons should come out effortlessly.
- Flip over the controller to remove the buttons from their sockets.

To reassemble your device, follow these instructions in reverse order.