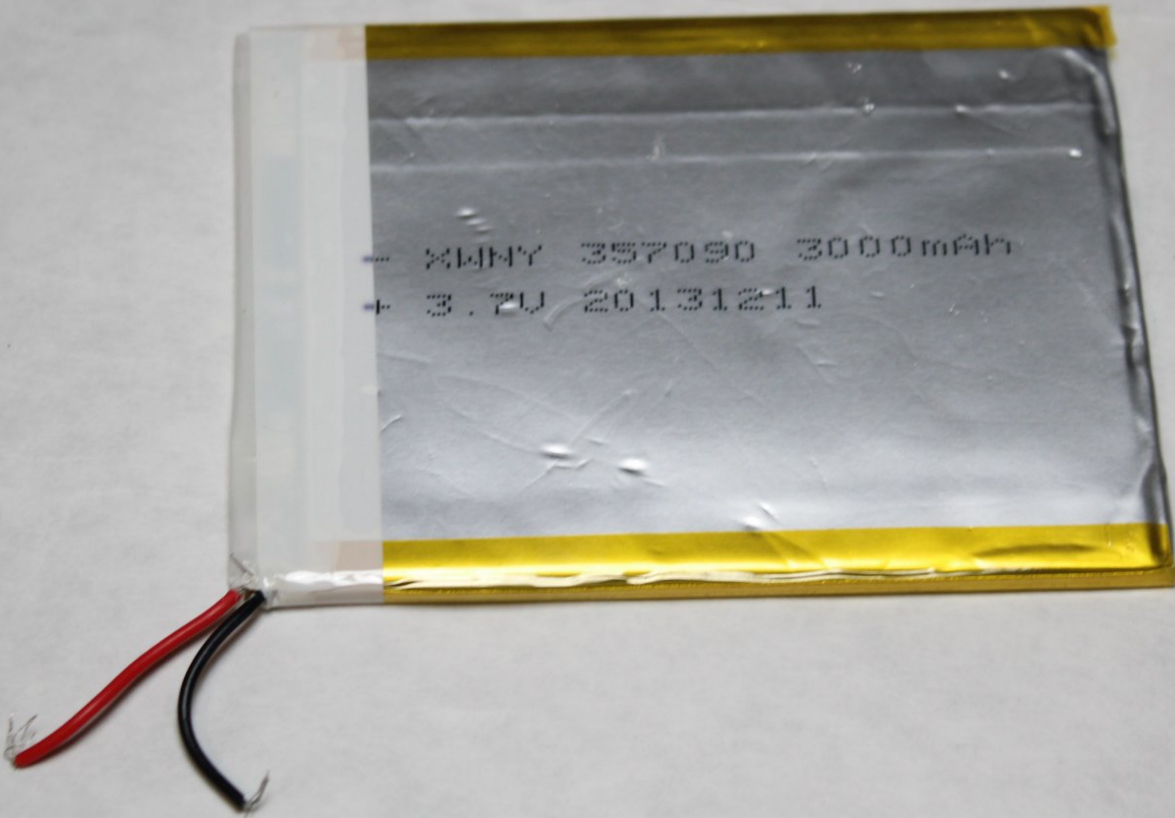




Zeepad 7.0 Battery Replacement

How to replace a Zeepad 7.0 battery.

Written By: Jacob



INTRODUCTION

This guide shows how to disassemble and replace the battery within the device.

For your safety, discharge your battery below 25% before disassembling your phone. This reduces the risk of a dangerous thermal event if the battery is accidentally damaged during the repair.



TOOLS:

- [iFixit Opening Tools](#) (1)
- [Soldering Iron](#) (1)
- [Solder](#) (1)
- [Flush Wire Cutters](#) (1)



PARTS:

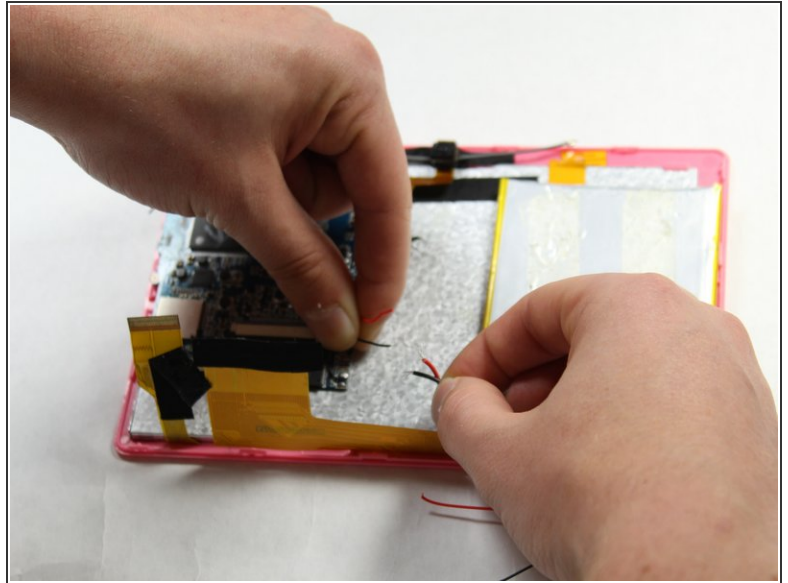
- <https://www.amazon.com/Replacement-3000mAh-Rechargeable-Polymer-Lithium/dp/B071X5ZJBM> (1)

Step 1 — Battery



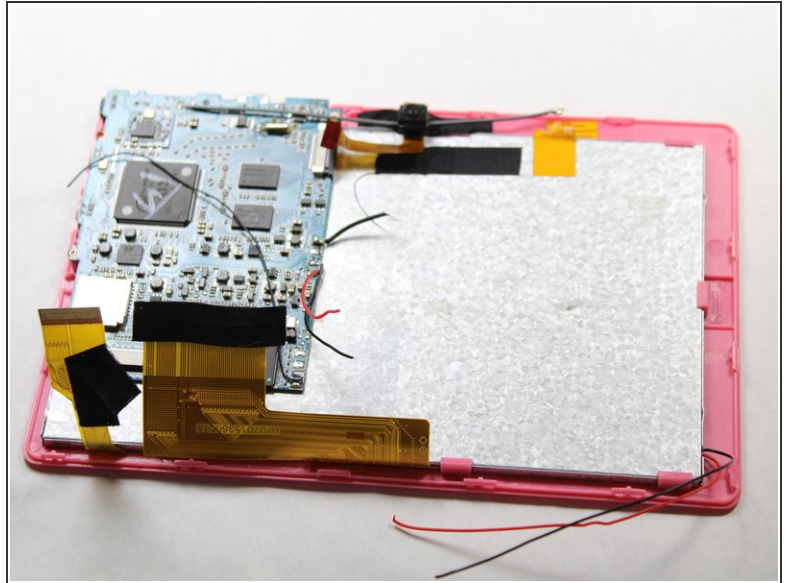
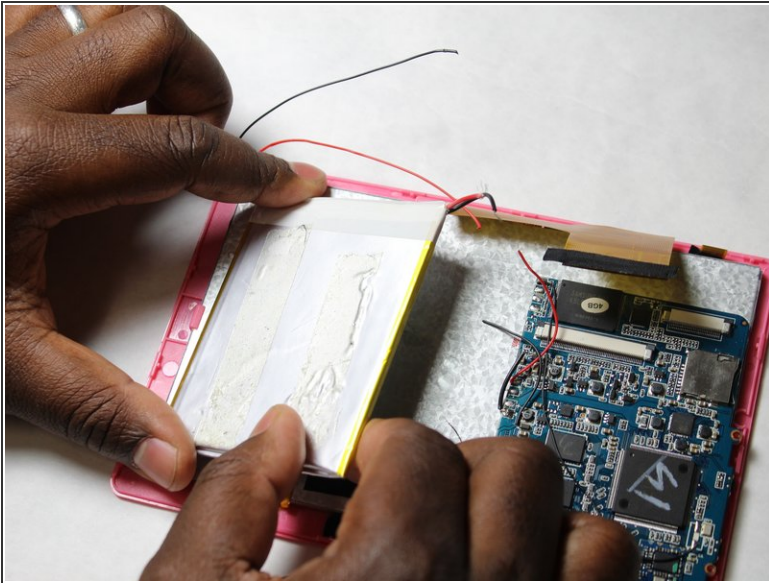
- Power off the device and keep it unplugged.
- Open the case using a plastic opening tool around the edges. Slightly pull the cover.
- ⓘ Do not completely remove back casing because there is a speaker attached to the back.

Step 2



- Cut the power cables connecting between the screen and the motherboard. There should be a red and black cable each. Try to cut in the center of the two wires to solder after you replace it.
- ⓘ Try to separate the wires away from the other wires on the motherboard. This way you will not cut any additional wiring.

Step 3



- Peel off the battery from the metal casing for the LED screen. The battery will be held down with an adhesive, and it will not take much pressure to be released.
- ⓘ There will be additional wiring hooked up to the motherboard. Make sure not to tangle up or damage any wiring close by.
- ⚠ Do not place much pressure onto the LED screen while peeling off the battery.

Step 4



- After creating space to work, warm up a soldering iron.
- Apply heat onto the solder over the corresponding cut wire to the new battery wire.
- Once the solder melts and forms a bridge between the two wires, try to turn on the device then check for power.

① [How To Solder and Desolder Connections](#)

⚠ Keep the soldering iron away from the battery, motherboard, and any other wires. Do not let children around the soldering station.

To reassemble your device, follow the initial instructions in reverse order.