



Protocol Kaptur GPS Main Circuit Board Replacement

Guide on how to access and replace the main circuit board of the Protocol Kaptur GPS drone.

Written By: Connor Woitte



INTRODUCTION

Use this guide to access and replace the main circuit board of the Protocol Kaptur GPS drone.

You can also use this guide to replace the battery: [Protocol Kaptur GPS Battery Replacement](#).

TOOLS:

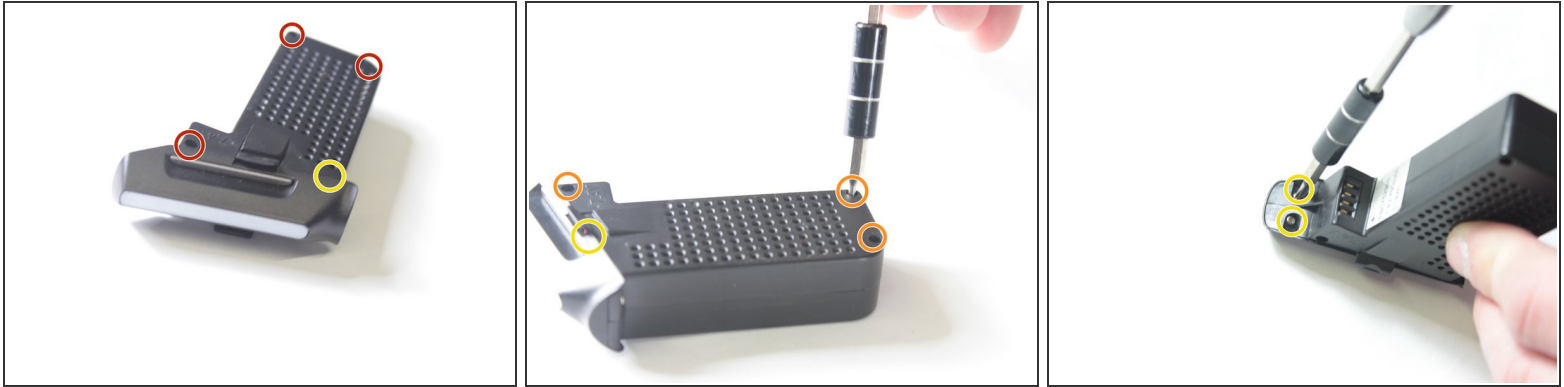
- [iFixit Opening Tools](#) (1)
 - [Soldering Iron](#) (1)
 - [Phillips #000 Screwdriver](#) (1)
-

Step 1 — Battery



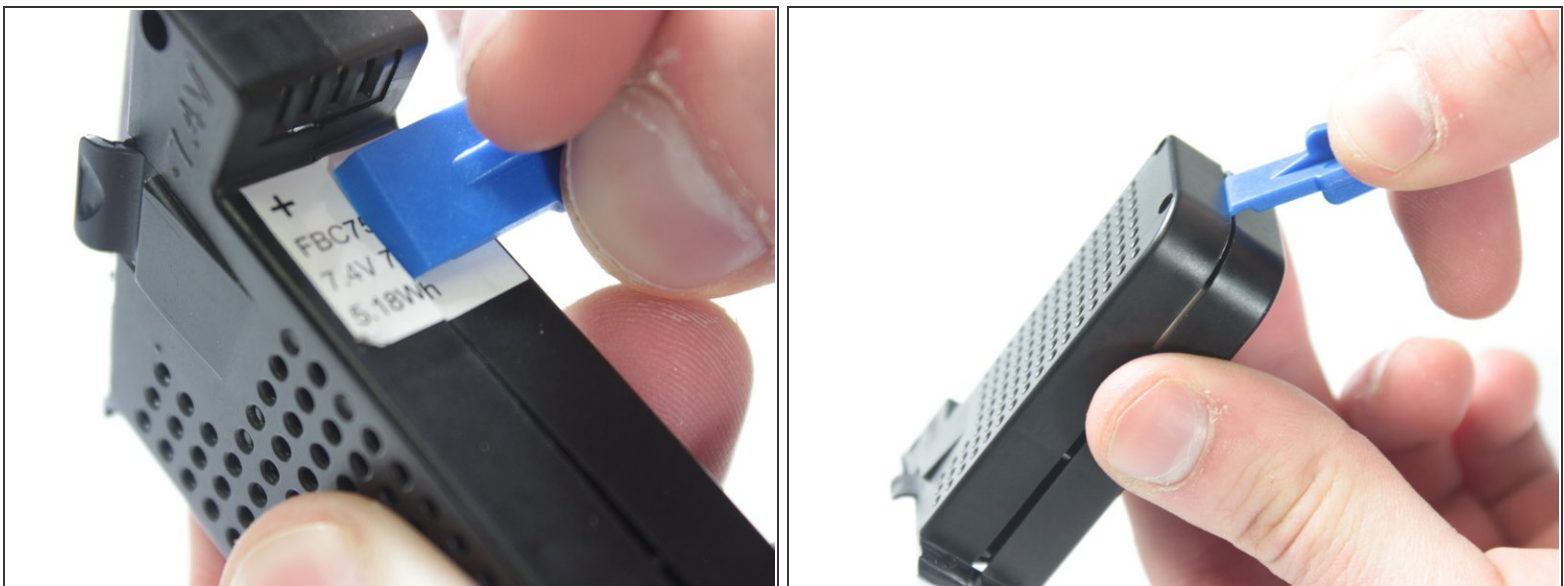
- The battery is accessible through the back of the drone.
- Press the tabs on both sides of the white stripe to pull the battery out.

Step 2



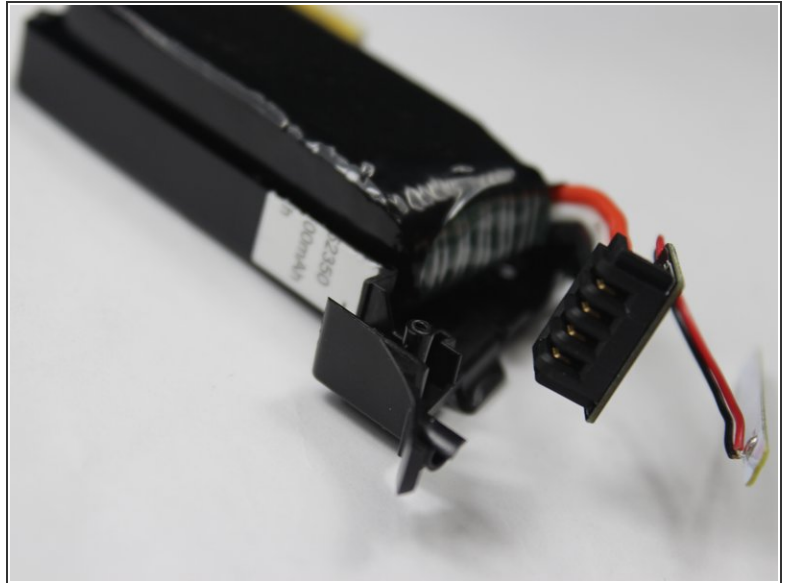
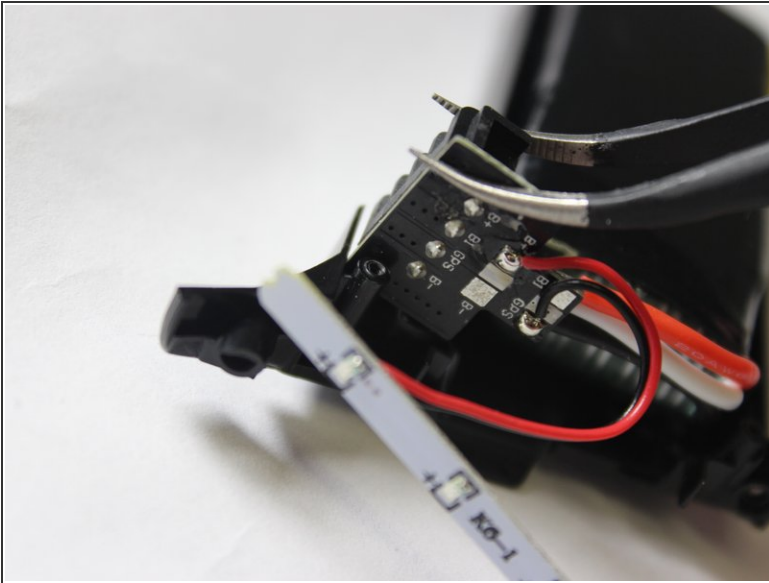
- Remove the screws starting with the three smaller ones on the top part of the battery.
 - Remove the three screws on the other side.
 - There are two screws tucked under where the yellow circle is located. You will need to remove the other screws first before you get to these two.
- i** There should be one 7 mm Phillips head screw, three 6 mm Phillips head screws, and four 5 mm Phillips head screws.

Step 3



- Remove the top piece, and gently pry the two halves apart. Divide the sticker if necessary.

Step 4



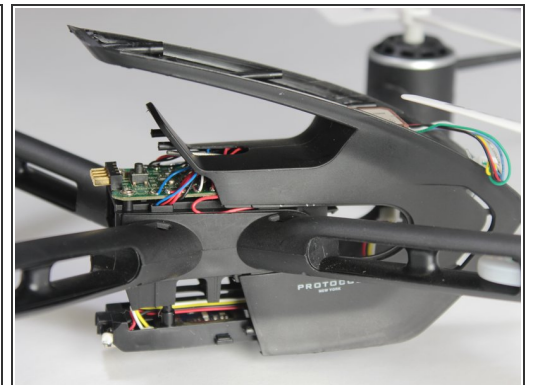
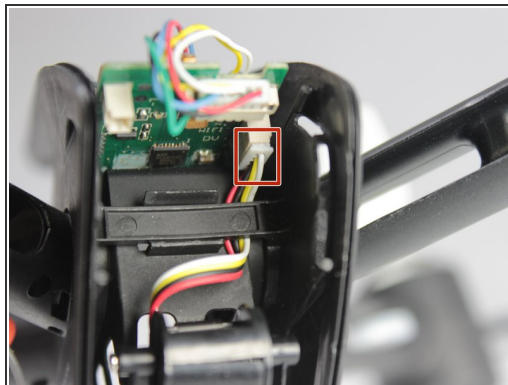
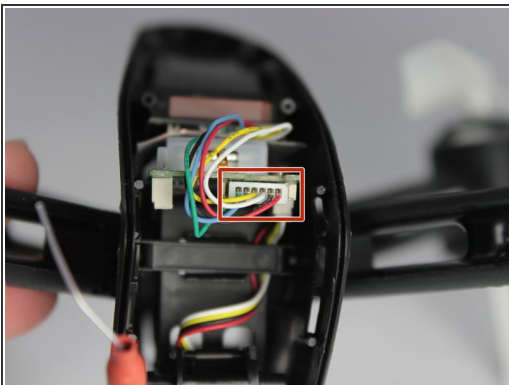
- The battery is now removable from its container.
- ☑ During reassembly, make sure the outlet is returned to its holder and faces the correct direction.

Step 5 — Main Circuit Board



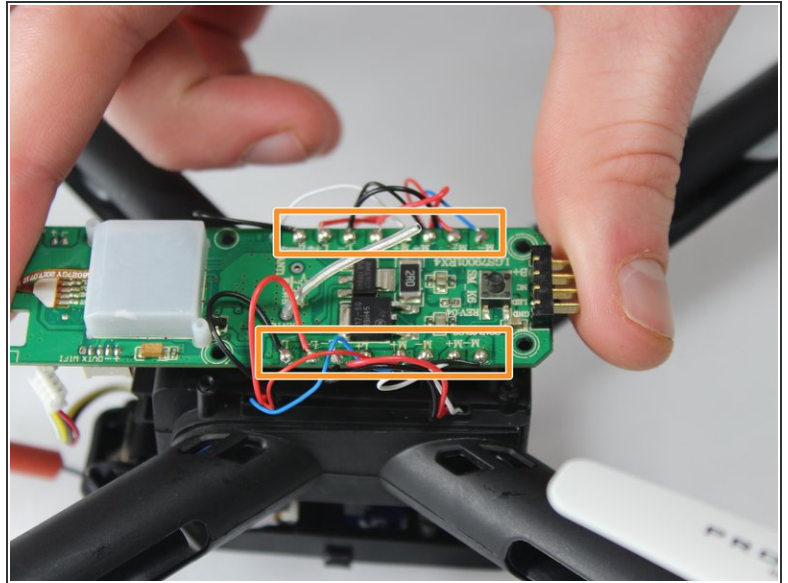
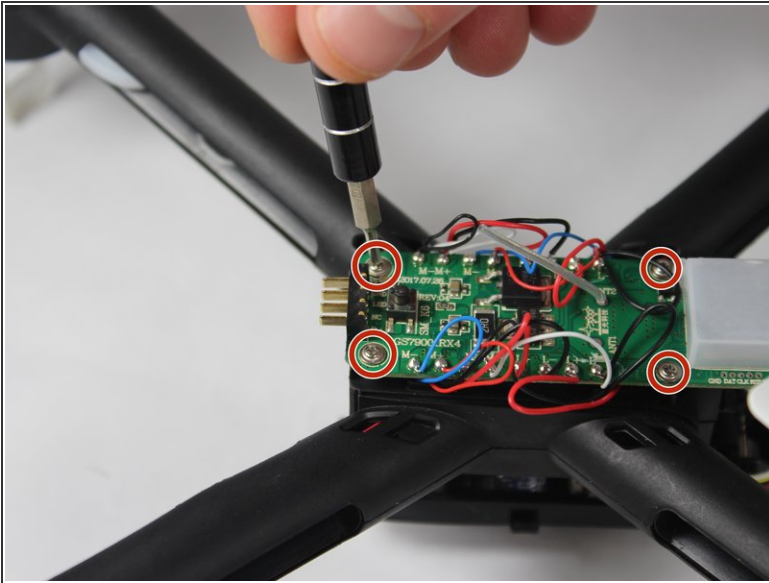
- Remove the 4x 7mm screws on the top and bottom, and the 2x 5mm screws from the middle, then remove the back part of the housing.
- Remove the two hidden screws at the bottom, and the white power button.
- ⓘ There will be 6x 7 mm Phillips head screws, and 2x 5 mm Phillips head screws.

Step 6



- Unplug all the cords from the circuit boards.
- Carefully slide the main body right off the arms.

Step 7



- Remove the four 4mm Phillips screws.
 - Desolder all cords on the circuit board, and pull the board up and out.
- i** It is important to keep track of where the leads came from. Red/Blue and Black/White pairings belong to motors, whereas Black/Red pairings belong to lights. The ports are labeled on the board.

To reassemble your device, follow these instructions in reverse order.