

Written By: Nat McCormick



INTRODUCTION

If your wireless connection is inconsistent or unresponsive the network card may be faulty. Use this guide to replace the network card and get back online.



TOOLS:

- [Anti-Static Wrist Strap](#) (1)
 - [Phillips #0 Screwdriver](#) (1)
 - [Spudger](#) (1)
-

Step 1 — Battery



- Remove the nine 4mm screws with a PH0 screwdriver.
- Remove the two 6mm screws with a PH0 screwdriver.

Step 2



- Remove the black rubber tab on the back of the computer
- Remove the 4mm screw hidden underneath the black tab with a PH0 screwdriver.


Step 3



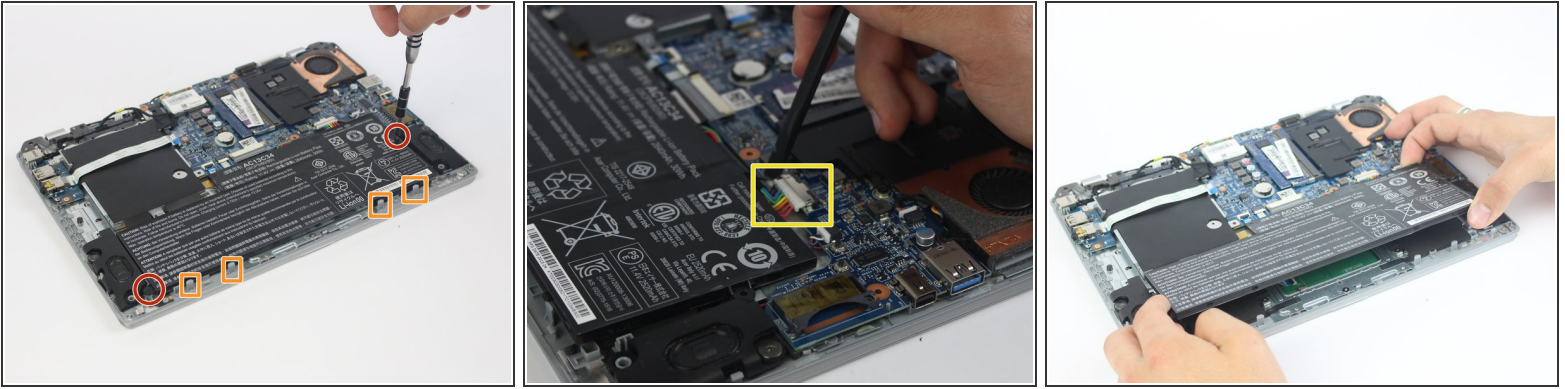
- Orient the computer upside down, with the hinges facing away from you.
- Find the black plastic piece in the SD card slot on the right side of the computer.
- Remove the plastic piece by sliding it out of the SD card slot.

Step 4



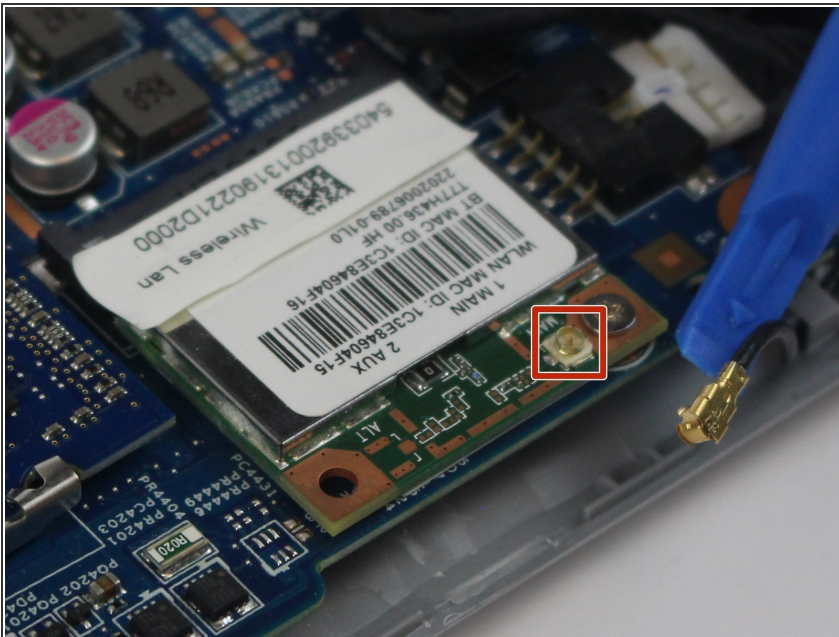
- Insert a spudger at these eight locations to disengage the plastic tabs from the housing cover, and pry apart.
 - Continue around the entire perimeter of the cover with the spudger.
-  Use a spudger to pry the cover around I/O ports.

Step 5



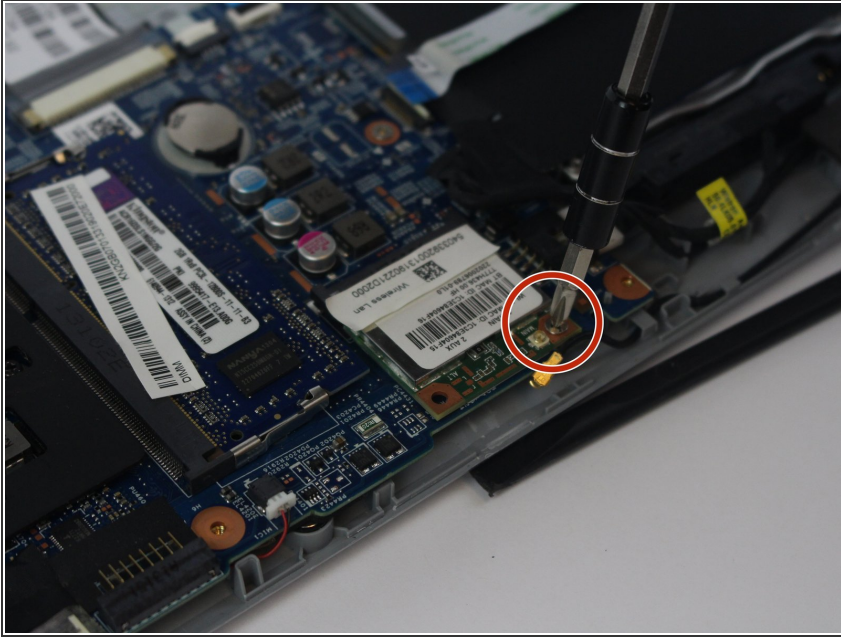
- Remove the two 4mm screws using a PH0 screwdriver.
- Depress the tabs holding the battery with a spudger.
- Disconnect the battery connector from the motherboard using a spudger.
- Pull the battery up and away from the laptop to remove.

Step 6 — Network Card



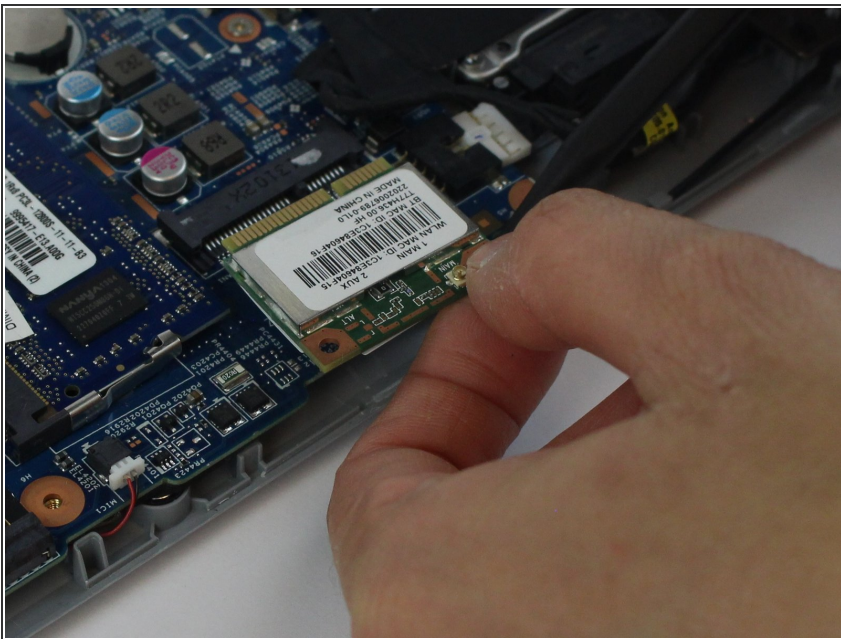
- Remove the wire connector from the network card using a plastic opening tool.

Step 7



- Remove the 3mm Phillips #0 screw.

Step 8



- Gently slide the network card out of the motherboard connector.

To reassemble your device, follow these instructions in reverse order.