



# Panasonic Lumix DMC-ZS6 LCD Assembly Replacement

How to replace a Panasonic Lumix DMC-ZS6 LCD assembly.

Written By: Derrick Thompson



---

## INTRODUCTION

This guide will teach you step by step on how to replace broken or malfunctioning Panasonic Lumix DMC-ZS6 LCD screens.

---



### TOOLS:

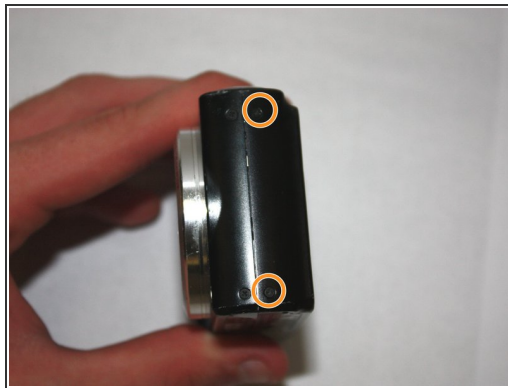
- [Phillips #000 Screwdriver](#) (1)
  - [Spudger](#) (1)
-

## Step 1 — LCD Assembly



- Remove the battery and SD card.

## Step 2



- Unscrew the two bottom 1.0 mm screws with a Phillips #000 screwdriver.
- Unscrew the two 1.0 mm screws to the left with a Phillips #000 screwdriver.
- Unscrew the two 1.0 mm screws to the right with a Phillips #000 screwdriver.

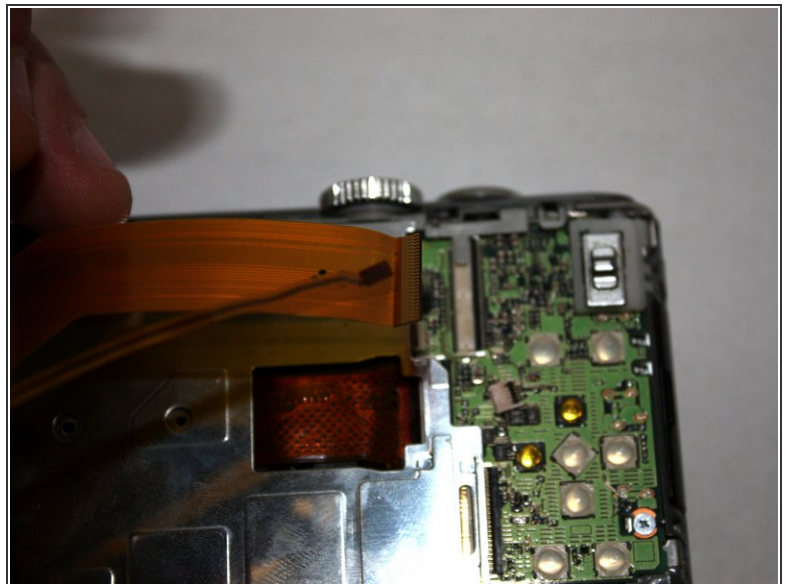
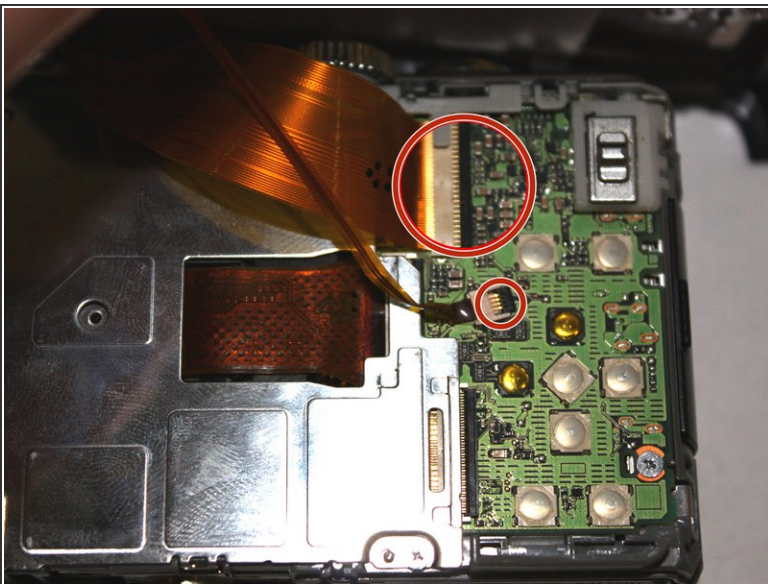


### Step 3



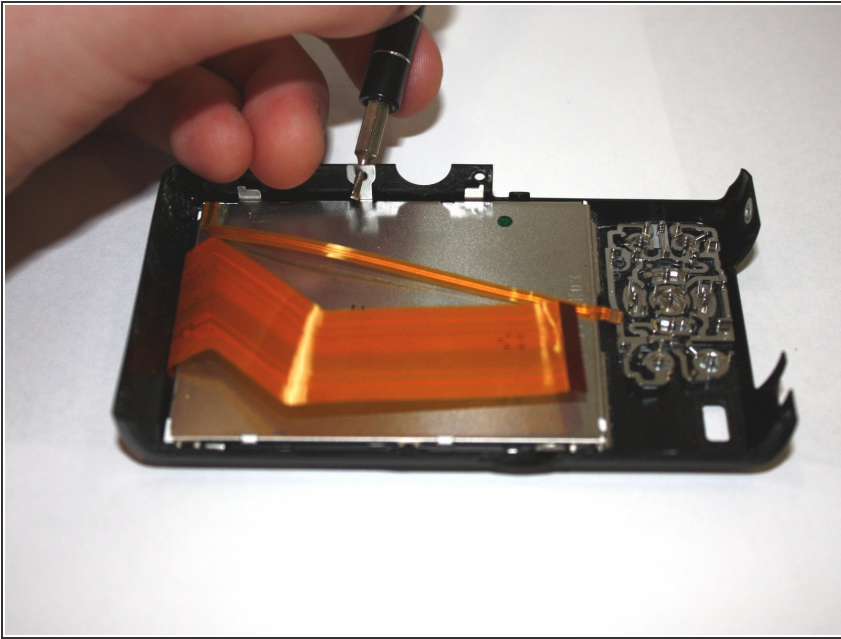
- Separate the back of the camera from the main body carefully.
- ⚠ Do not apply excessive force. The LCD is connected by ribbon cables that can be easily damaged.

### Step 4



- Use the tip of the spudger to flip up the black tabs on the ribbon cables.
- Pull gently on the ribbon cables to unseat them.

## Step 5



- Use the tip of the spudger to flip up the metal tabs.
- Lift the LCD panel out of place carefully.

To reassemble your device, follow these instructions in reverse order.