



# Dell Alienware 17 Memory Modules 1 & 2 Replacement

Written By: Terrence15



---

## INTRODUCTION

In this guide, we will show you how to remove and replace Memory Modules 1 & 2.



### TOOLS:

- [Phillips #0 Screwdriver](#) (1)
-

## Step 1 — turning the computer over



**⚠ WARNING:** Before working inside your computer, read the safety information that shipped with your computer and follow the steps in [Before Working Inside Your Computer](#). After working inside your computer, follow the instructions in [After Working Inside Your Computer](#).

- Close the display and turn the computer over

## Step 2 — removing screws



- Remove the screws that secure the base cover to the computer base.

### Step 3 — slide base cover



- Slide the base cover toward the front of the computer.

### Step 4 — remove the base cover



- Lift the base cover off.

## Step 5 — replacing base cover



- Align the tabs on the **new** base cover with the slots on the computer base

## Step 6 — placing screw



- Slide the base cover toward the back of the computer and align the screws holes on the base cover with

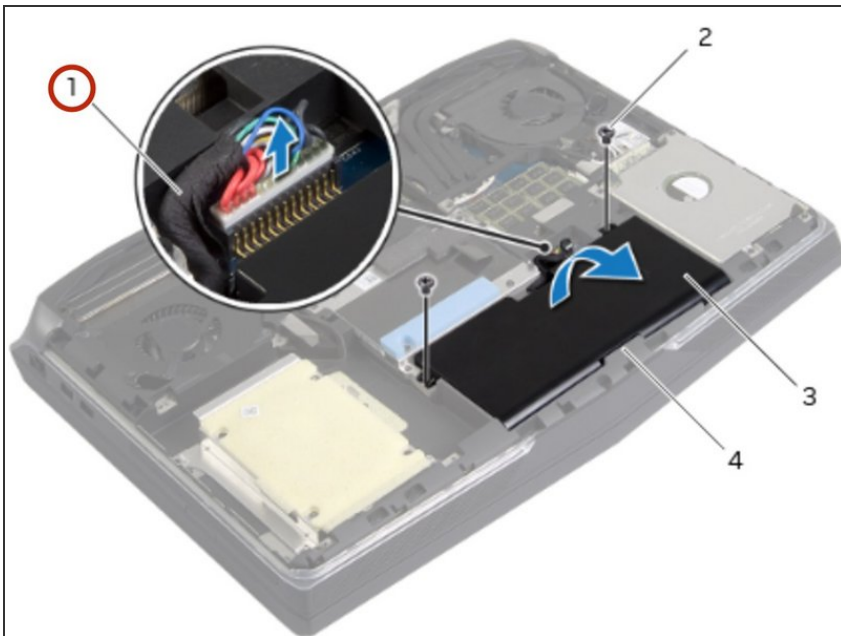
the screw holes on the computer base.

## Step 7 — secure base cover



- Replace the screws that secure the base cover to the computer base.

## Step 8 — Disconnecting the Battery Cable

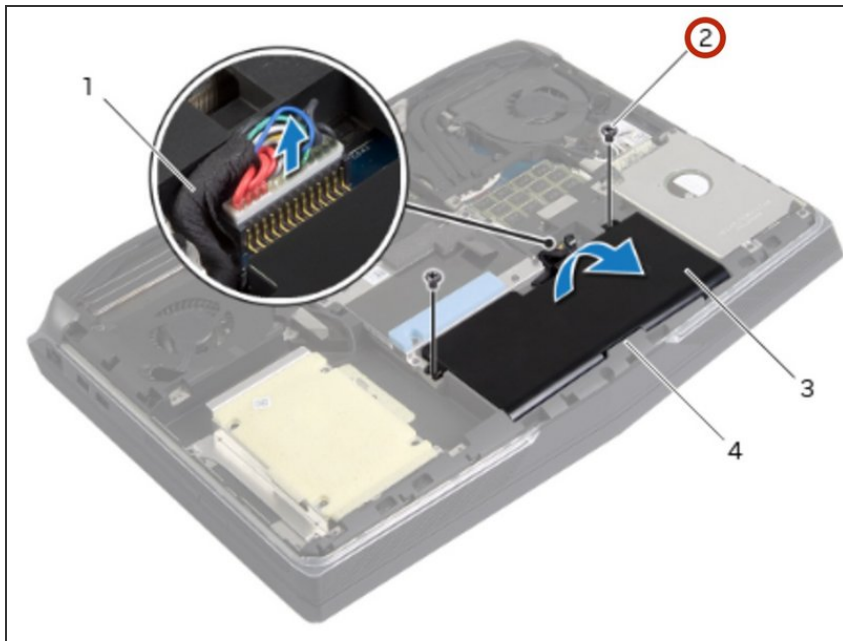


- ⚠ **WARNING:** Before working inside your computer, read the safety information that shipped with your computer and follow the steps in [Before Working Inside Your Computer](#). After working inside your computer, follow the instructions in [After Working Inside Your Computer](#).

- Disconnect the battery cable from the system board.

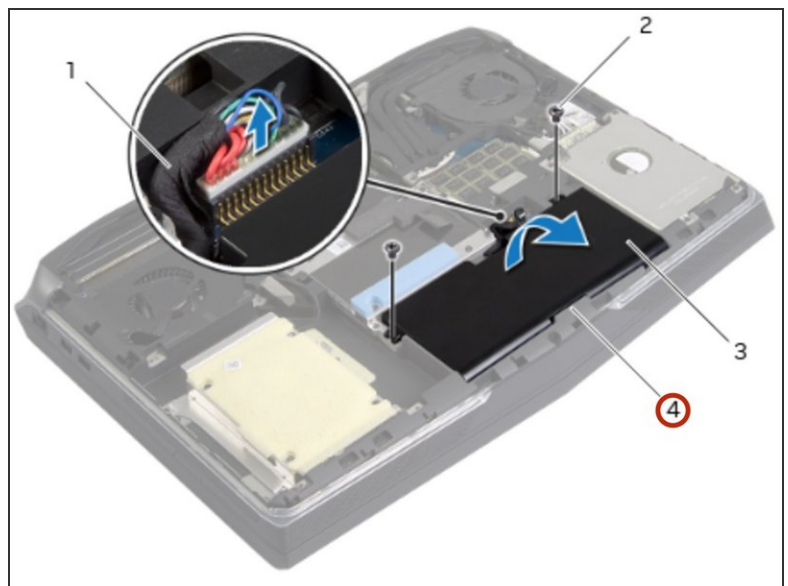
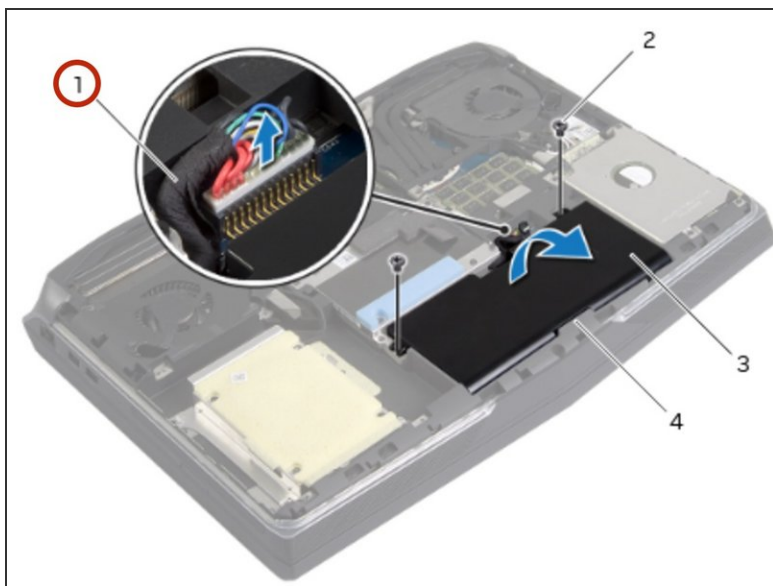


## Step 9 — Remove the Screws



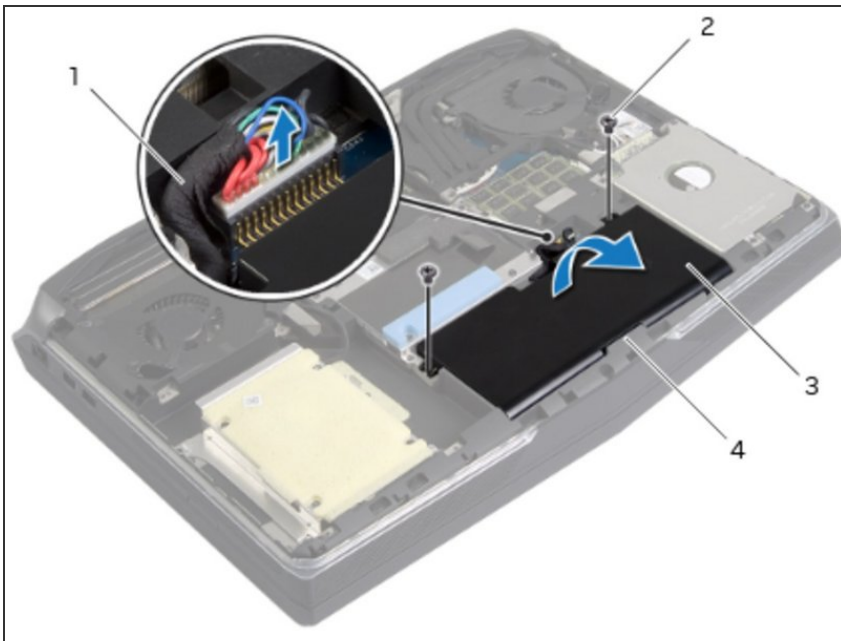
- Remove the screws that secure the battery to the computer base.

## Step 10 — Releasing the Battery



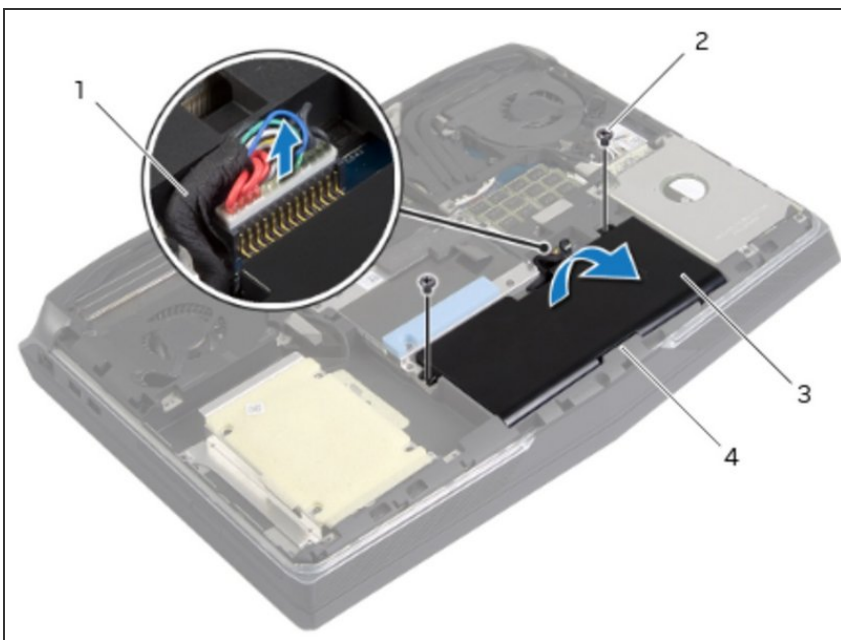
- Using the battery cable, lift and release the battery from the tabs on the computer base.

## Step 11 — Opening the Display



- Turn the computer over and open the display.

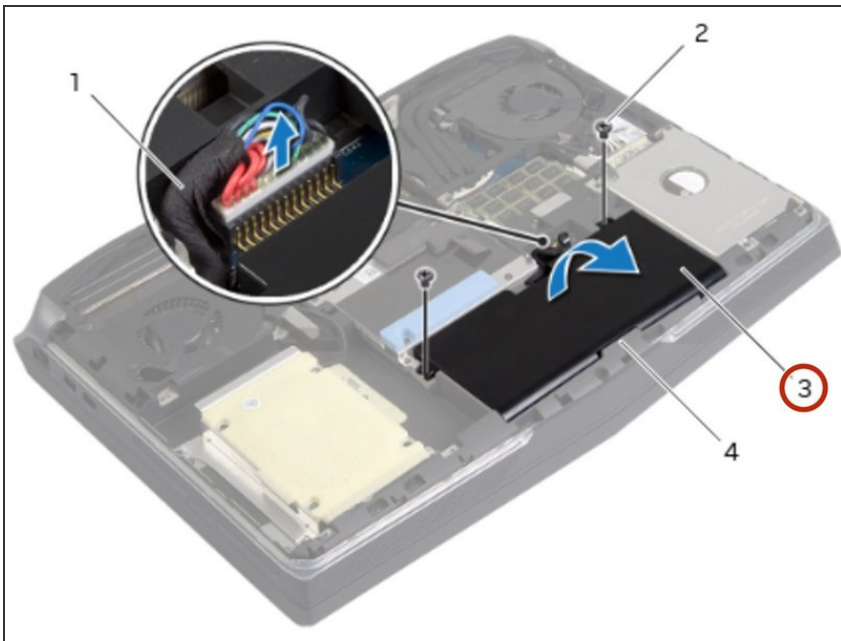
## Step 12 — Grounding the System Board



- Press and hold the power button for five seconds to ground the system board.

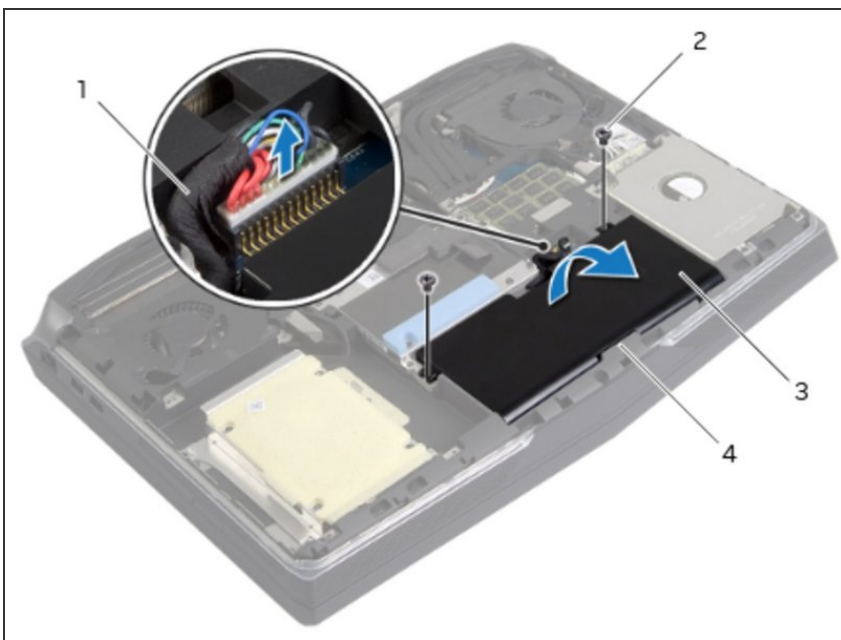


## Step 13 — Slide the New Battery



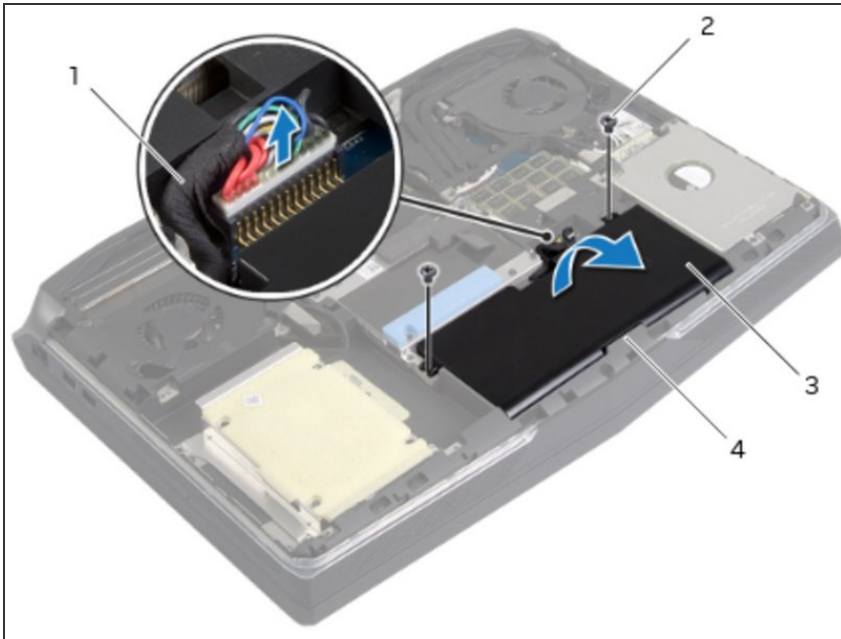
- Slide the **NEW** battery under the tabs on the computer base.

## Step 14 — Aligning the Screw Holes



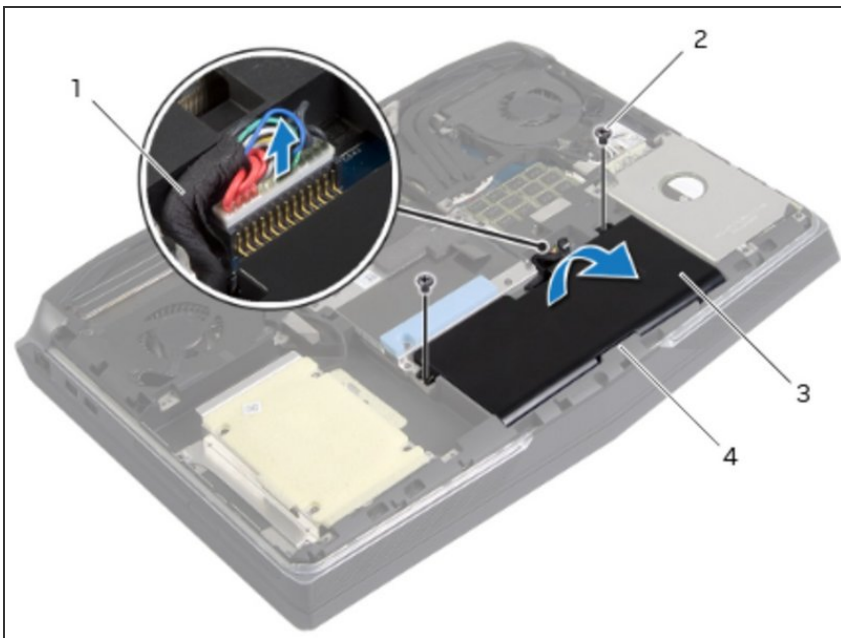
- Align the screw holes on the battery with the screw holes on the computer base.

## Step 15 — Replace the Screws



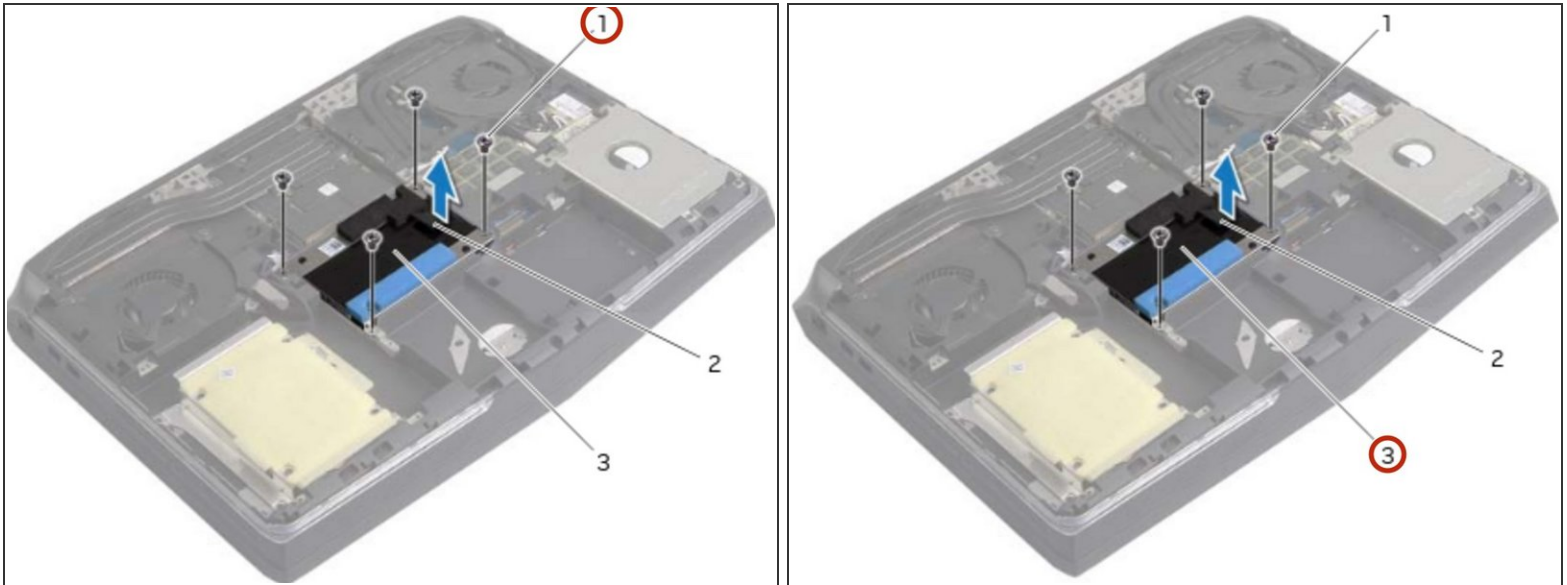
- Replace the screws that secure the battery to the computer base.

## Step 16 — Connect the Battery Cable



- Connect the battery cable to the system board.

## Step 17 — Remove the Screws



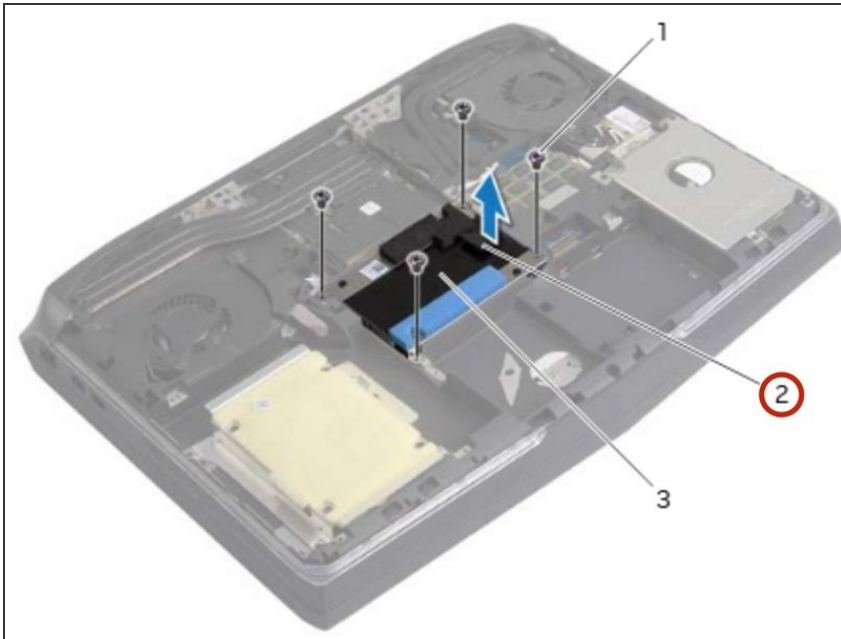
**⚠ WARNING:** Before working inside your computer, read the safety information that shipped with your computer and follow the steps in [Before Working Inside Your Computer](#). After working inside your computer, follow the instructions in [After Working Inside Your Computer](#).

**⚠ CAUTION:** To avoid data loss, do not remove the hard drive while the computer is On or in Sleep state.

**⚠ CAUTION:** Hard drives are extremely fragile. Exercise care when handling the hard drive.

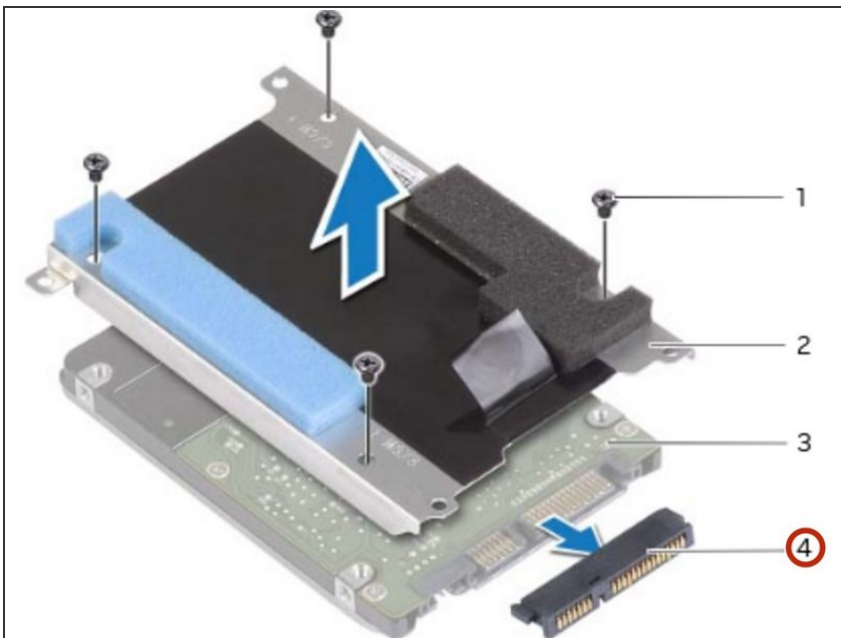
- Remove the screws that secure the hard-drive assembly to the computer base.

## Step 18 — Lifting the Hard-Drive Assembly



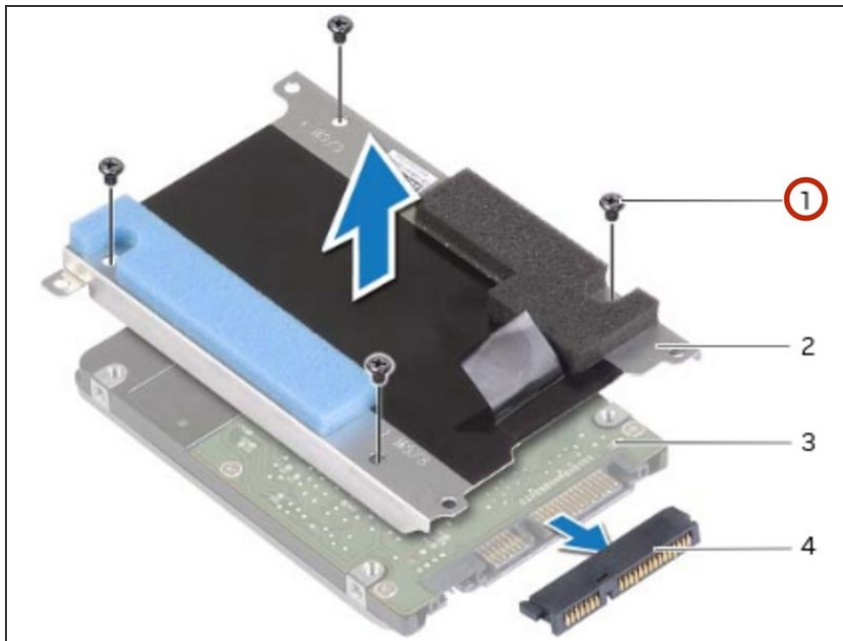
- Using the pull-tab, lift the hard-drive assembly off the computer base.

## Step 19 — Disconnecting the Interposer



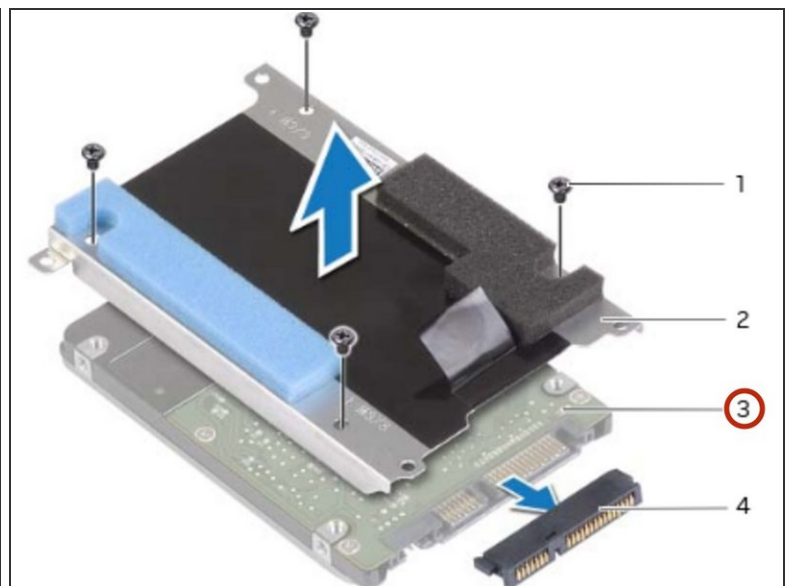
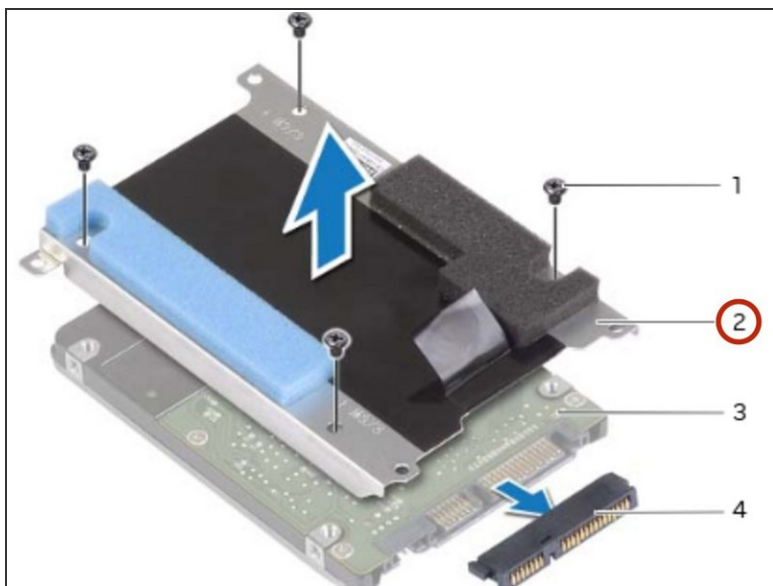
- Disconnect the interposer from the hard drive.

## Step 20 — Remove the Screws



- Remove the screws that secure the hard-drive bracket to the hard drive.

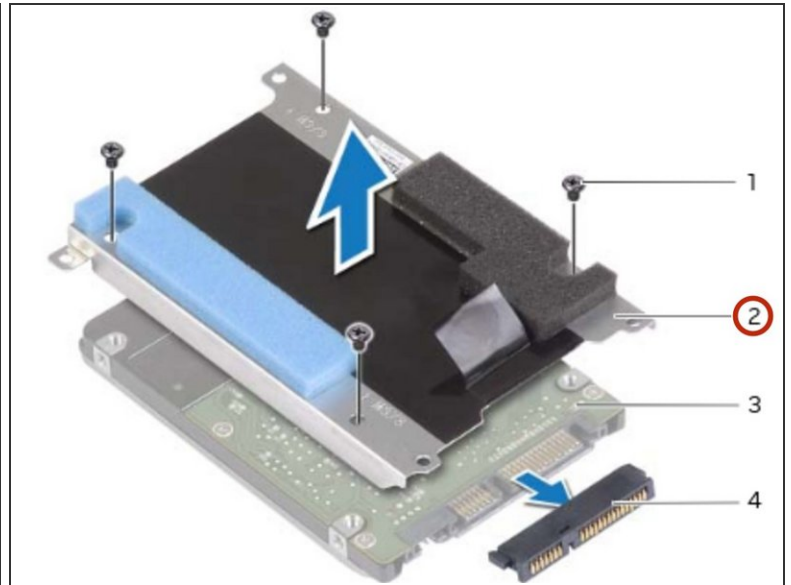
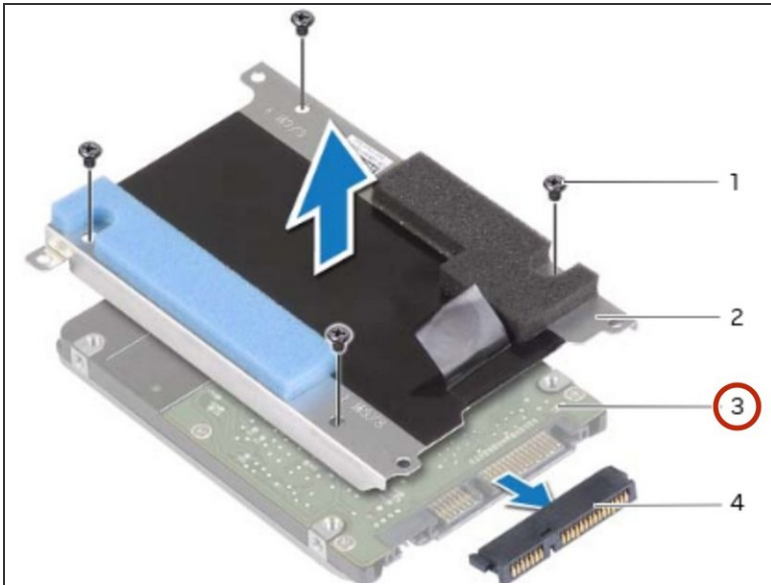
## Step 21 — Lifting the Hard-Drive Bracket



- Lift the hard-drive bracket off the hard drive.

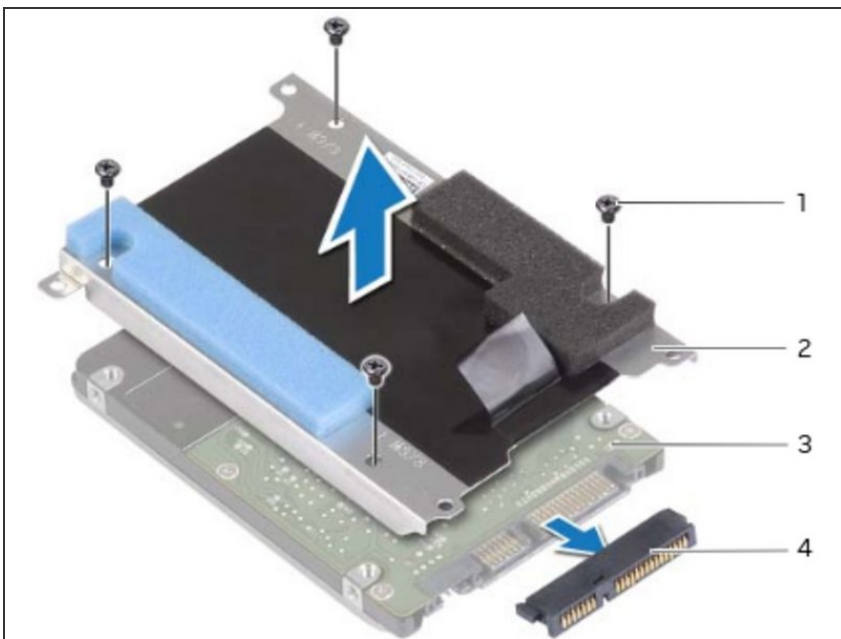


## Step 22 — Placing the Hard Drive



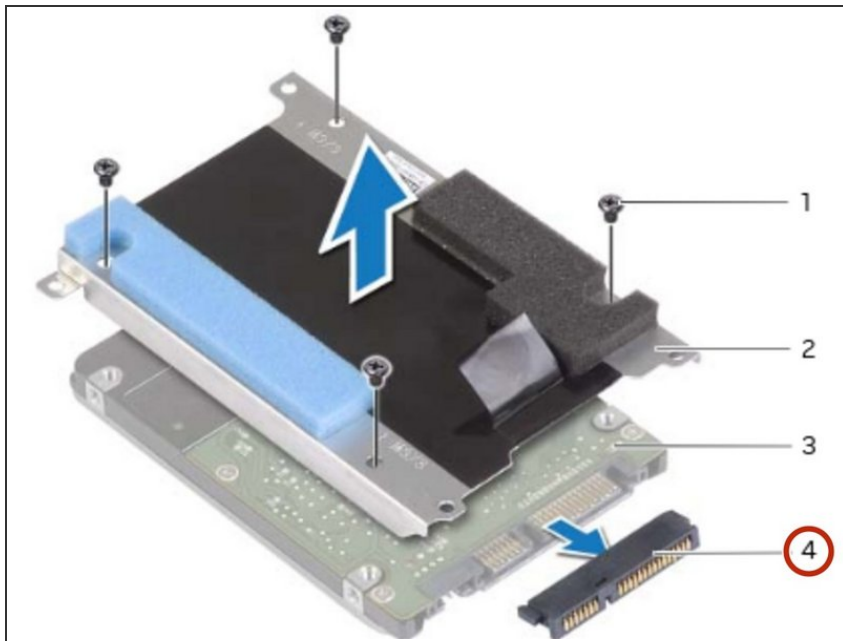
- Place the **NEW** hard drive in the hard-drive bracket.

## Step 23 — Replace the Screws



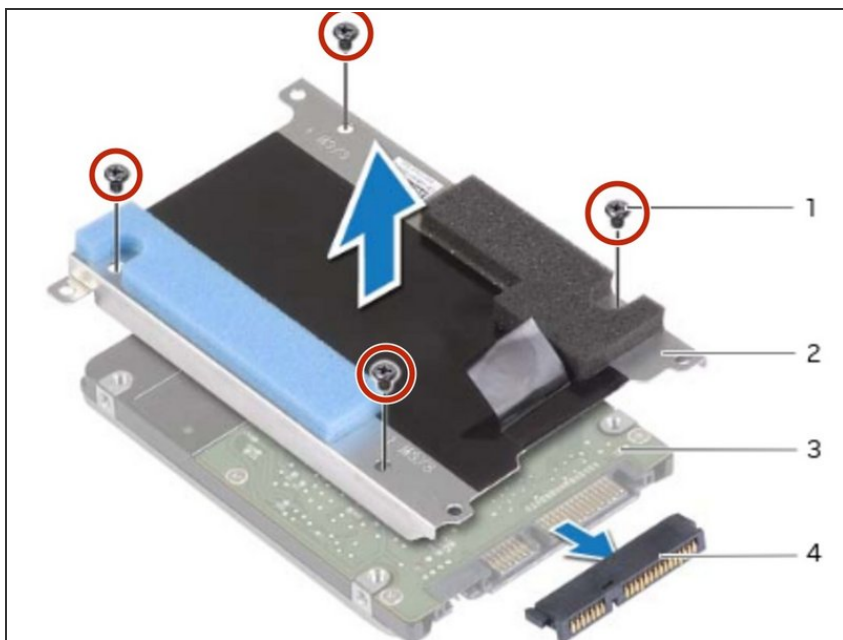
- Replace the screws that secure the hard-drive bracket to the hard drive.

## Step 24 — Connecting the Interposer



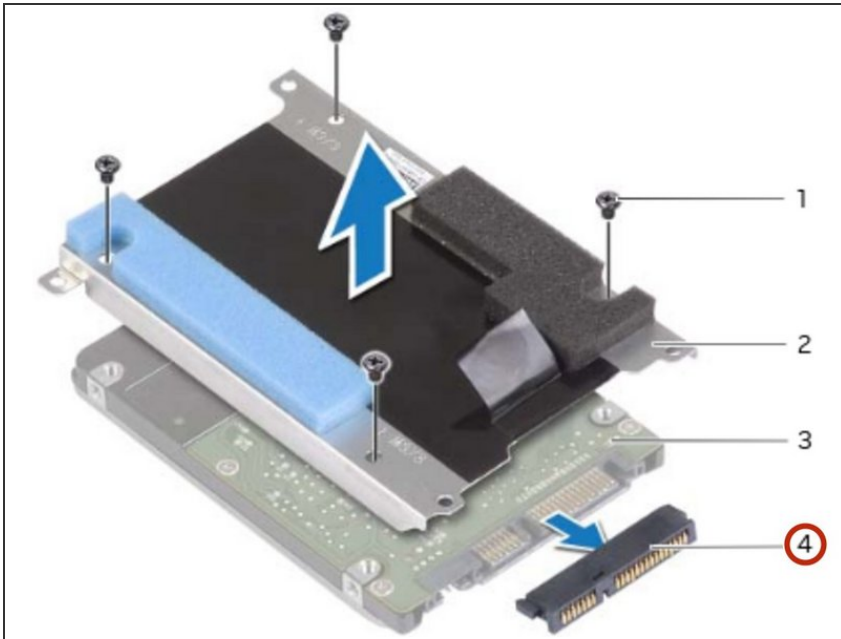
- Connect the interposer to the hard drive.

## Step 25 — Align the Screw Holes



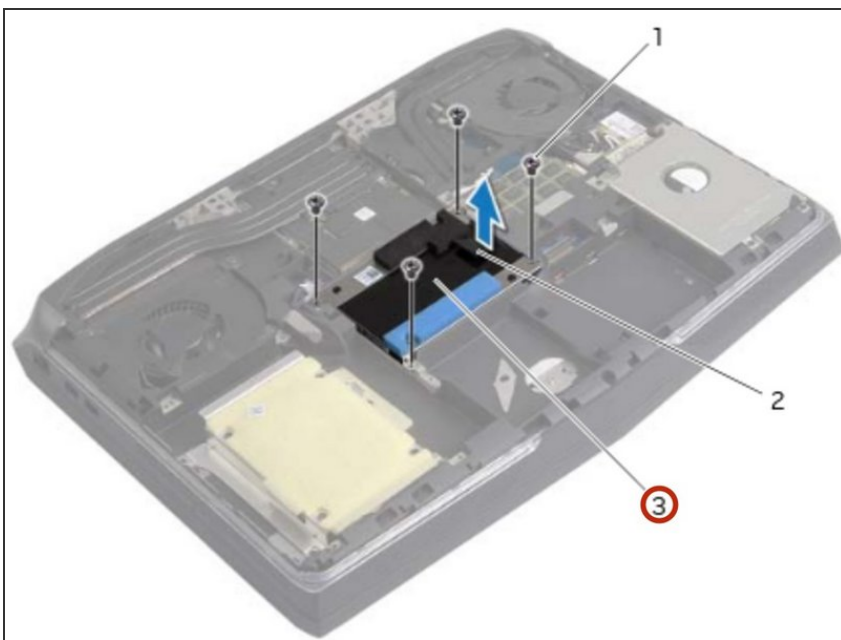
- Align the screw holes on the hard-drive bracket with the screw holes on the hard drive.

## Step 26 — Connecting the Interposer



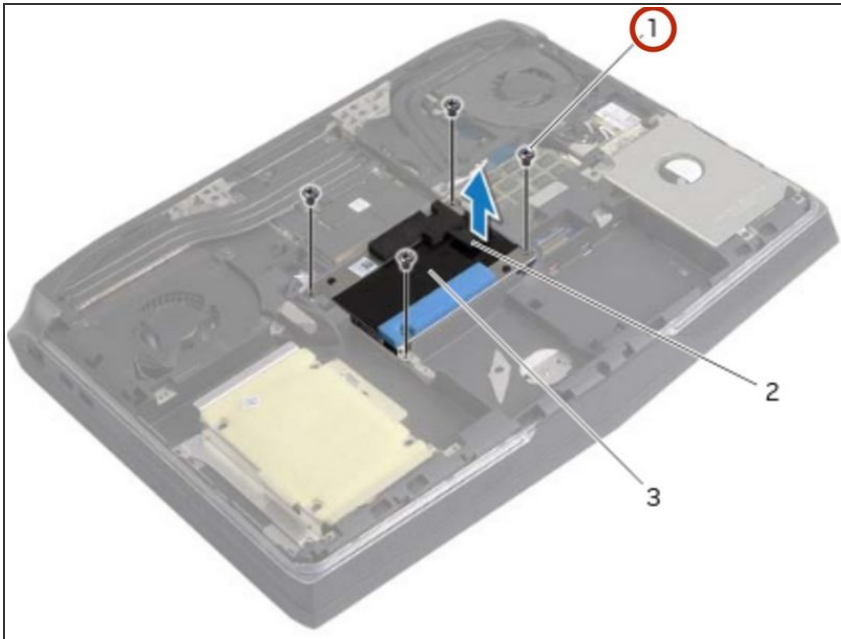
- Connect the interposer to the hard drive.

## Step 27 — Placing the Hard-Drive Assembly



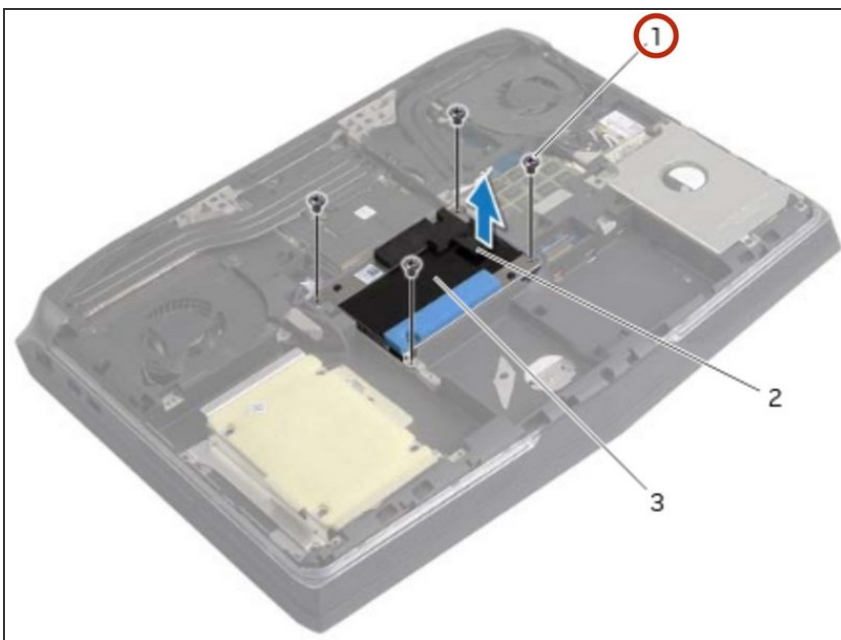
- Place the hard-drive assembly in the hard-drive bay.

## Step 28 — Aligning the Screw Holes



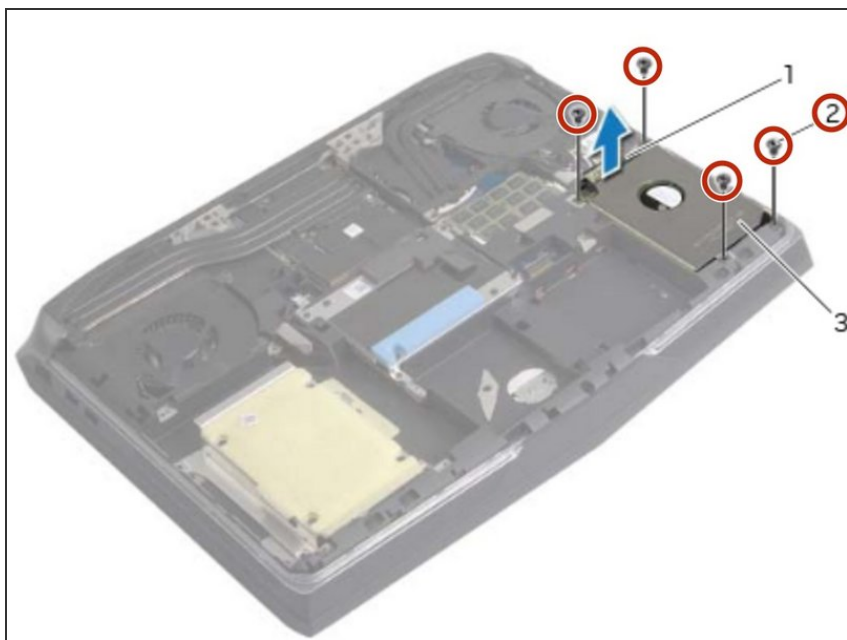
- Align the screw holes on the hard-drive assembly with the screw holes on the computer base.

## Step 29 — Replace the Screws



- Replace the screws that secure the hard-drive assembly to the computer base.

## Step 30 — Remove the Screws



**⚠ WARNING:** Before working inside your computer, read the safety information that shipped with your computer and follow the steps in [Before Working Inside Your Computer](#). After working inside your computer, follow the instructions [After Working Inside Your Computer](#).

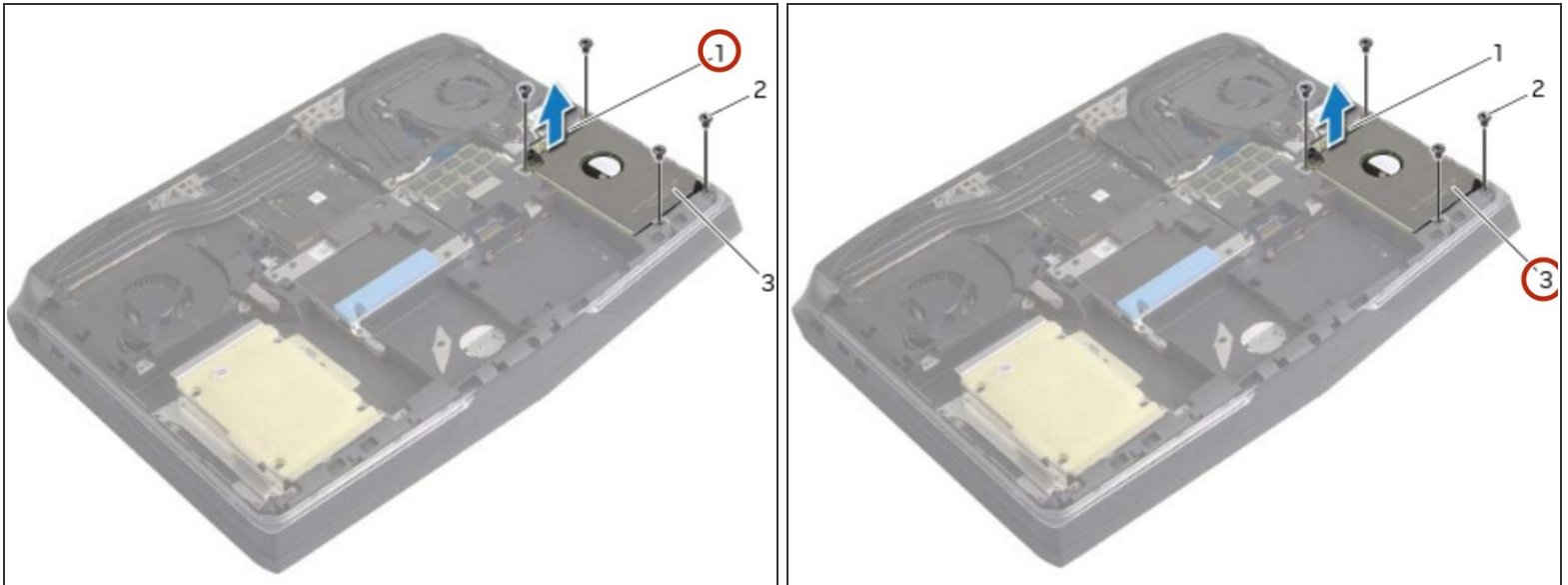
**⚠ CAUTION:** To avoid data loss, do not remove the hard drive while the computer is On or in Sleep state.

**⚠ CAUTION:** Hard drives are extremely fragile. Exercise care when handling the hard drive.

- Remove the screws that secure the hard-drive assembly to the computer base.

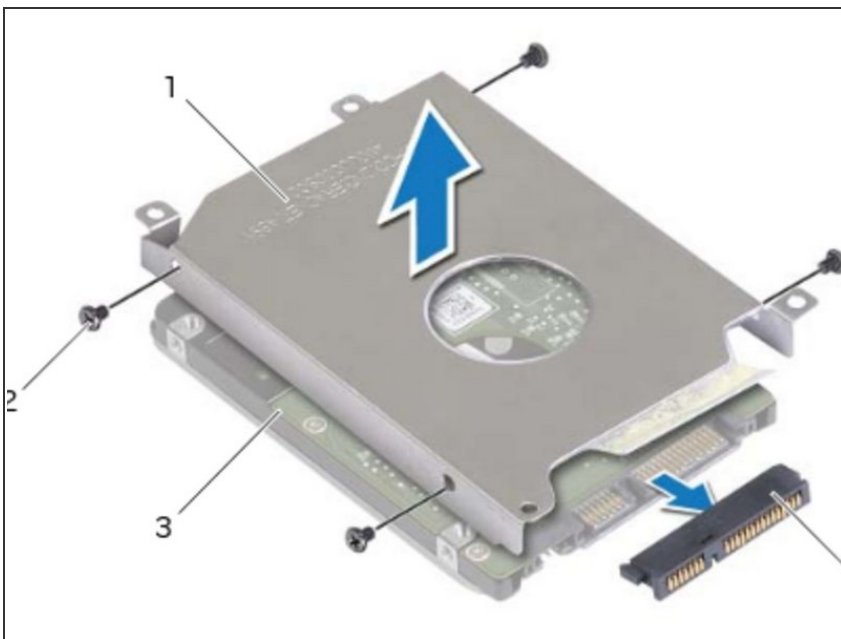


## Step 31 — Lifting the Hard-Drive Assembly



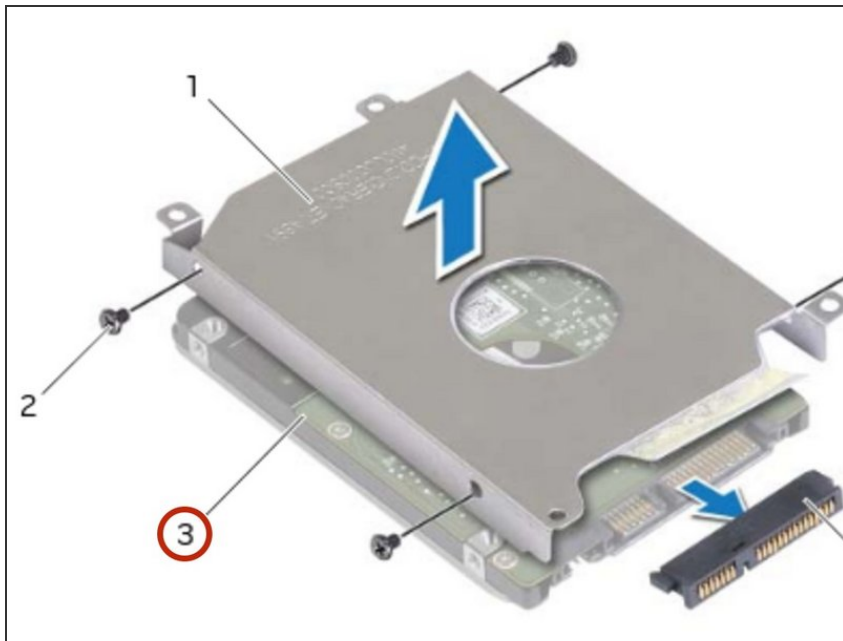
- Using the pull-tab, gently lift the hard-drive assembly.

## Step 32 — Lifting the Latch



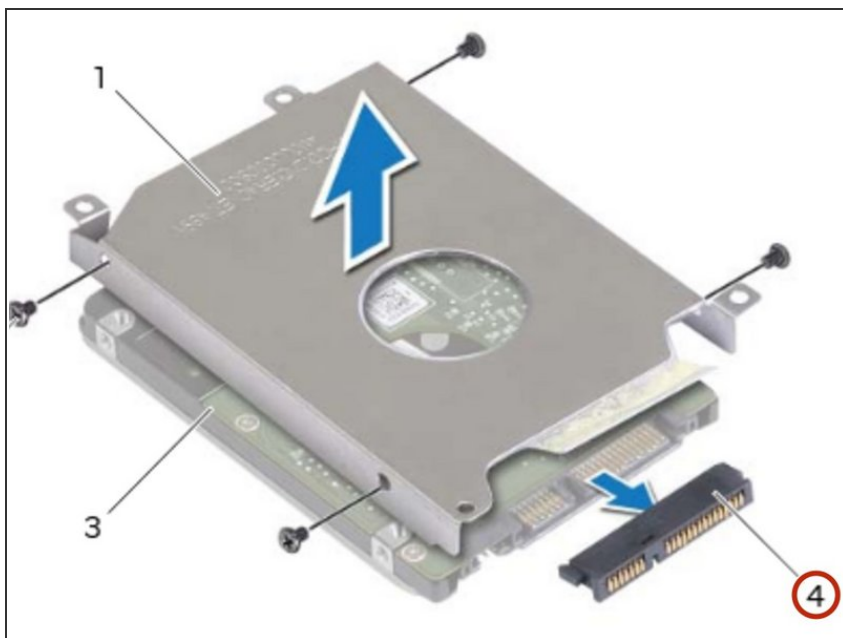
- Lift the latch and disconnect the hard-drive cable from the system board.

## Step 33 — Lifting the Hard-Drive Assembly



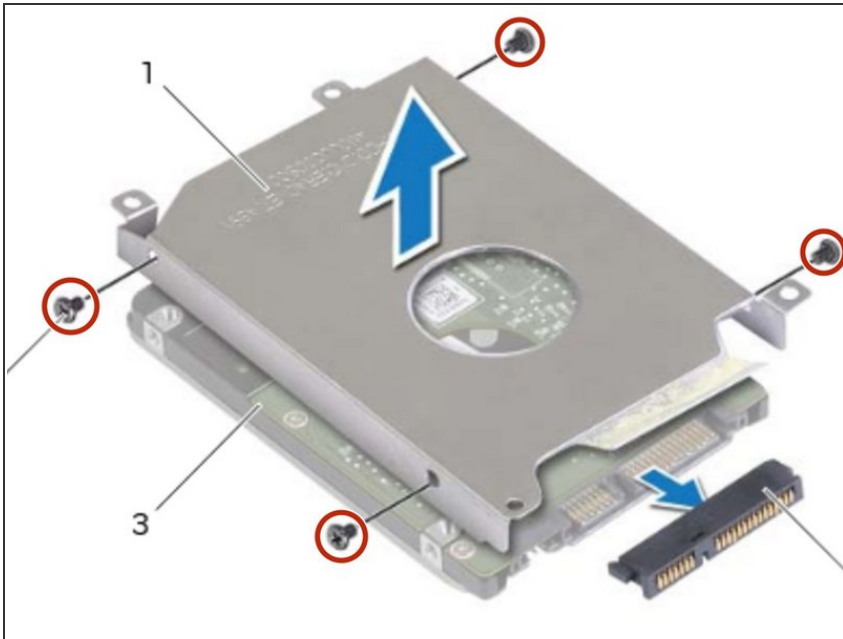
- Lift the hard-drive assembly off the computer base.

## Step 34 — Disconnecting the Interposer



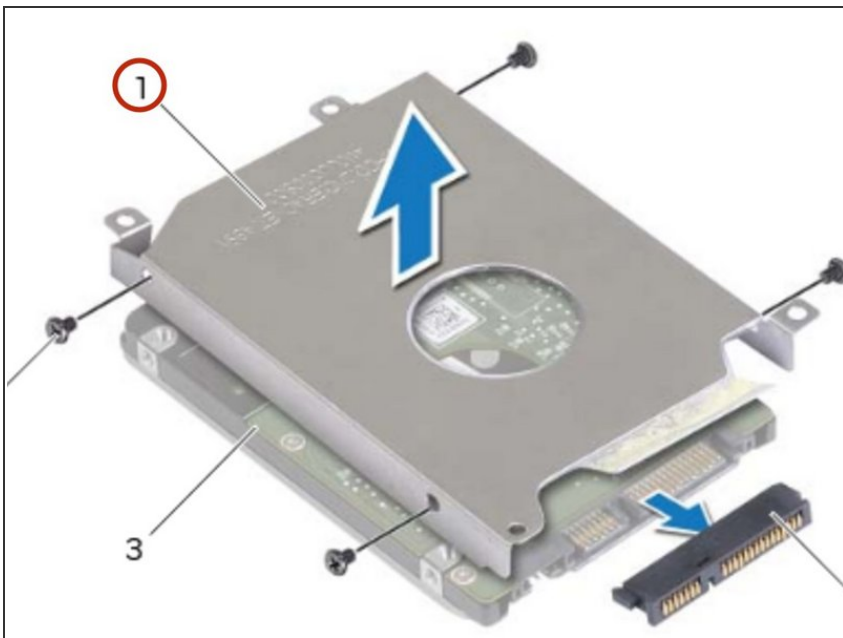
- Disconnect the interposer from the hard drive.

## Step 35 — Remove the Screws



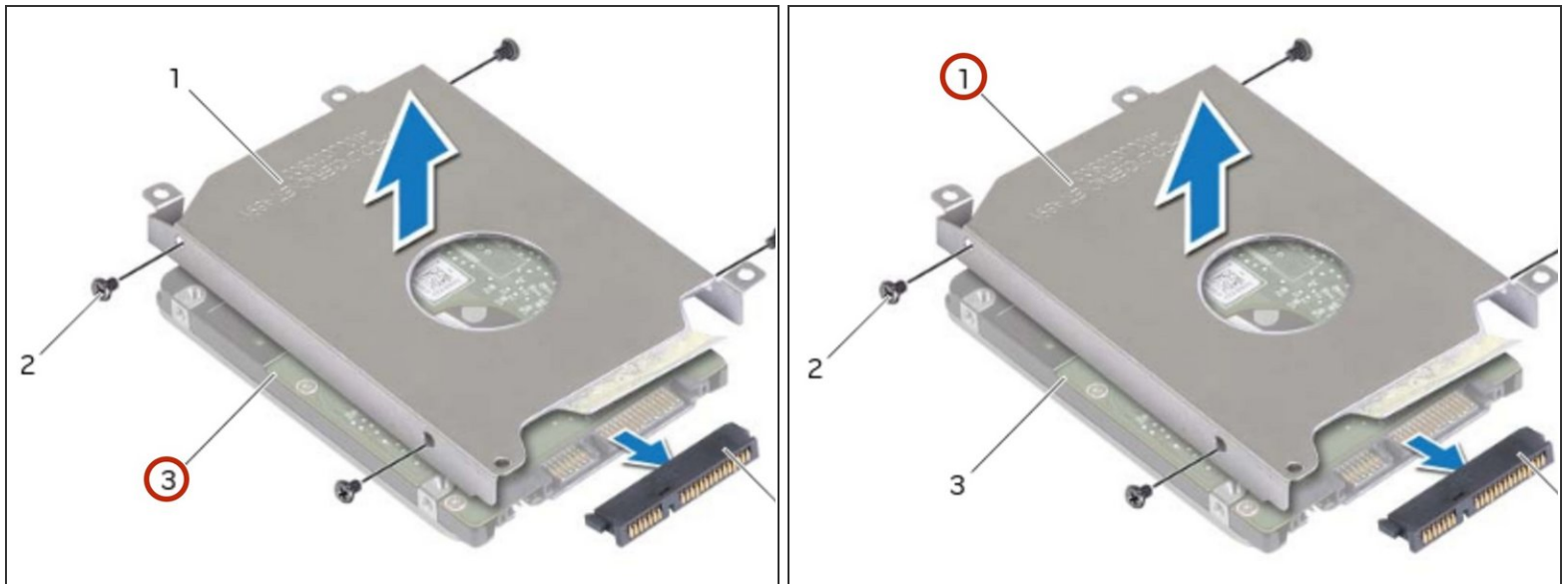
- Remove the screws that secure the hard-drive bracket to the hard drive.

## Step 36 — Lifting the Hard-Drive Bracket



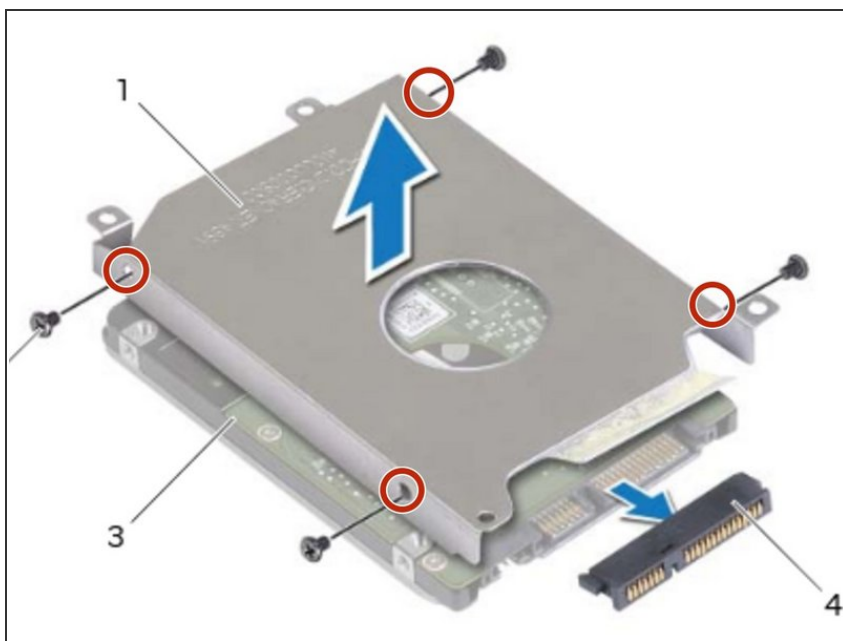
- Lift the hard-drive bracket off the hard drive.

## Step 37 — Placing the Hard-Drive



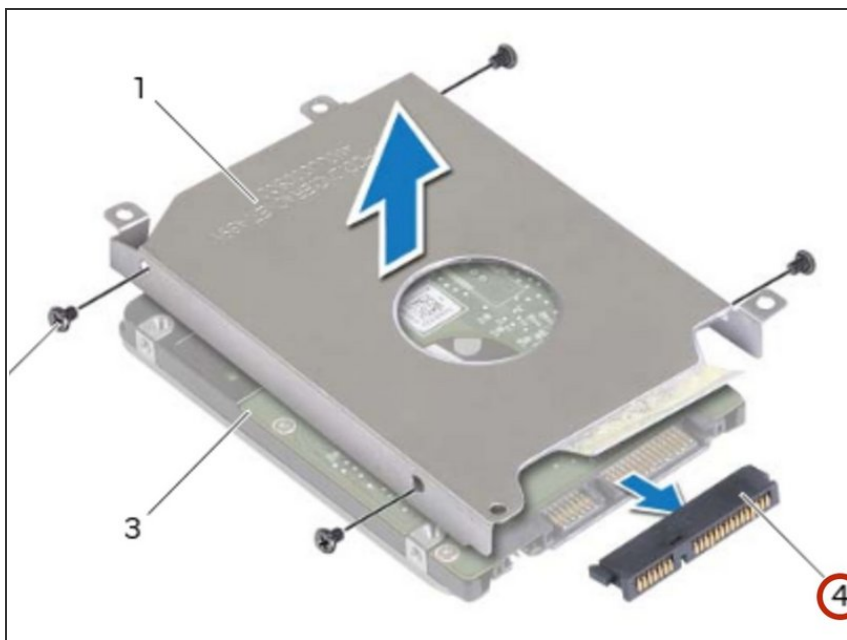
- Place the **NEW** hard drive into the hard-drive bracket.

## Step 38 — Align the Screw Holes



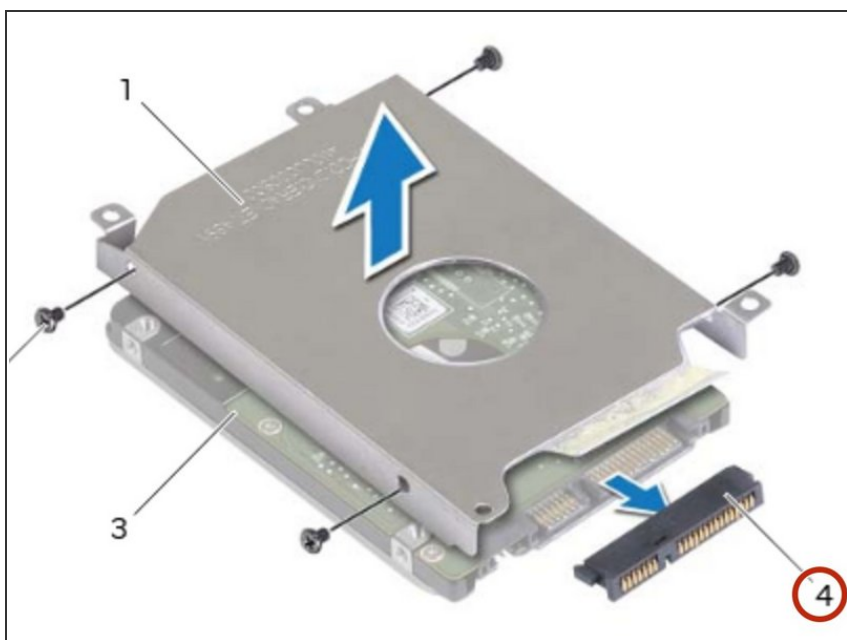
- Align the screw holes on the hard-drive bracket with the screw holes on the hard drive.

## Step 39 — Replace the Screws



- Replace the screws that secure the hard-drive bracket to the hard drive.

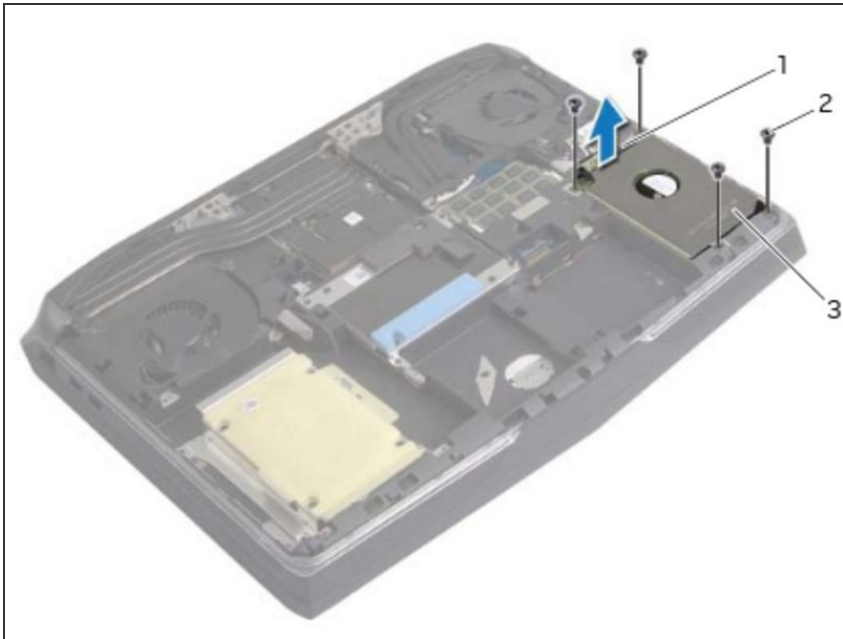
## Step 40 — Connect the Interposer



- Connect the interposer to the hard-drive.

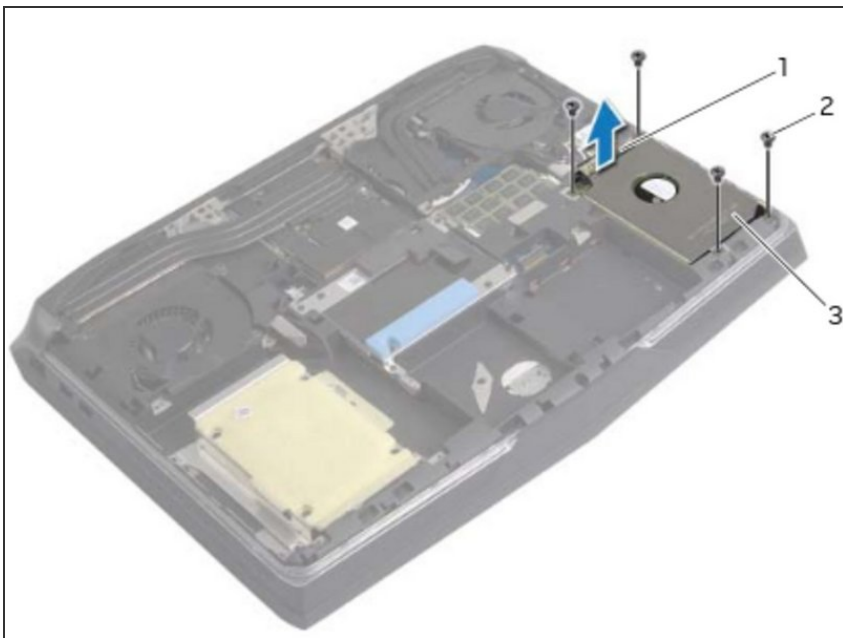


## Step 41 — Placing the Hard-Drive Assembly



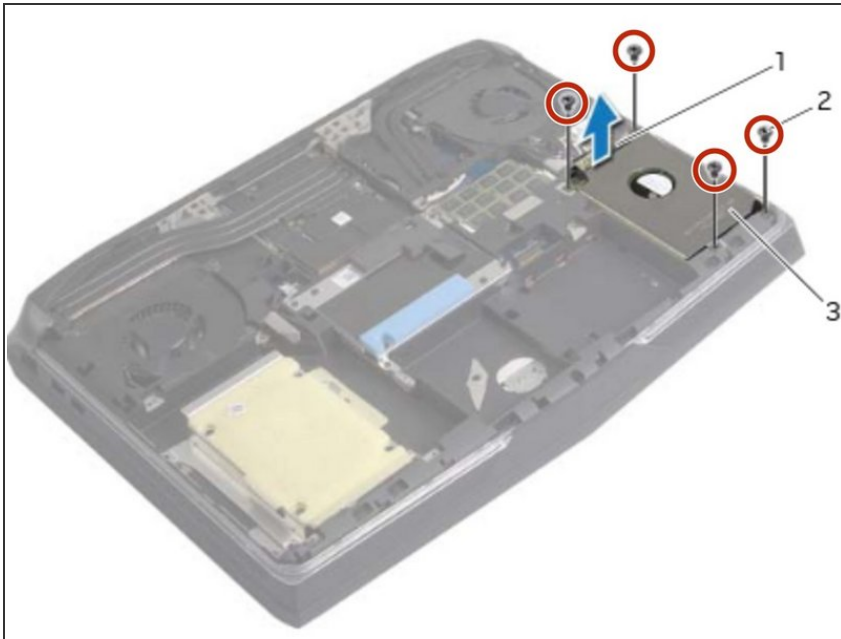
- Place the hard-drive assembly in the hard-drive bay.

## Step 42 — Aligning the Screw Holes



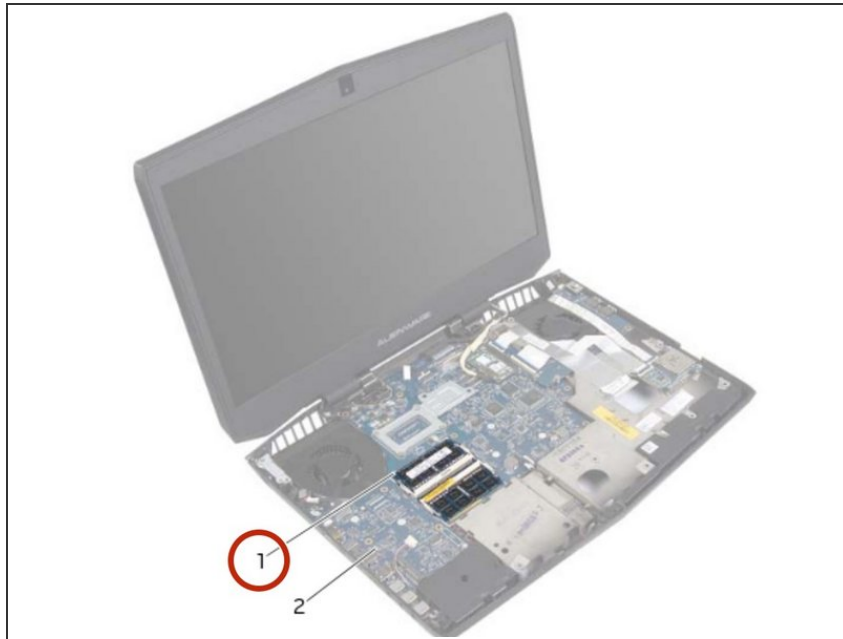
- Align the screw holes on the hard-drive assembly with the screw holes on the computer base.

## Step 43 — Replace the Screws



- Replace the screws that secure the hard-drive assembly to the computer base.

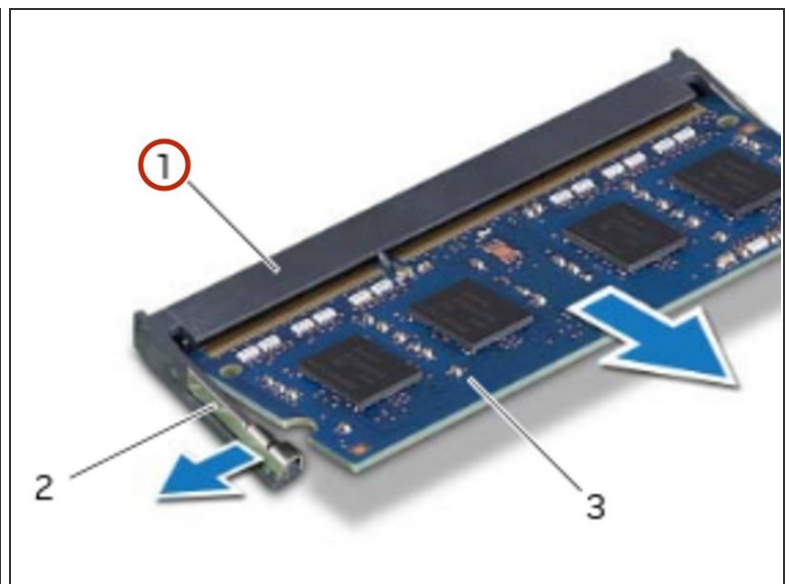
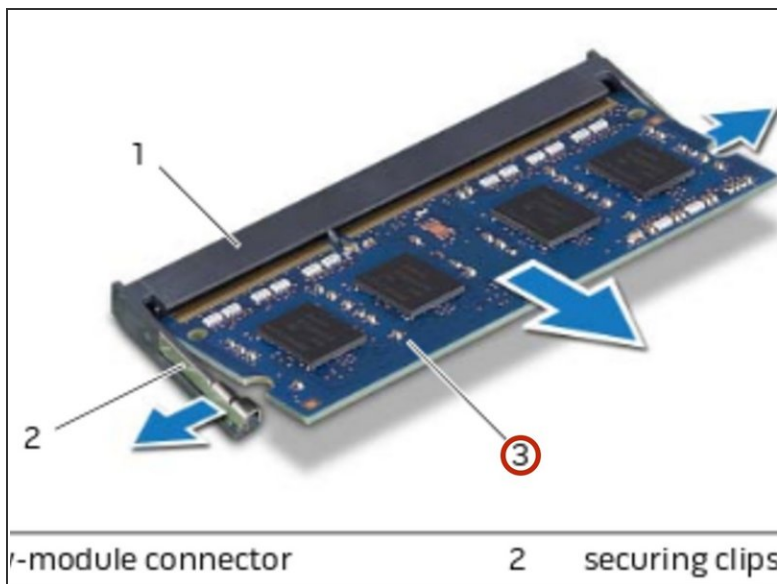
## Step 44 — Popping up the Memory Module



**⚠ WARNING:** Before working inside your computer, read the safety information that shipped with your computer and follow the steps in [Before Working Inside Your Computer](#). After working inside your computer, follow the instructions in [After Working Inside Your Computer](#).

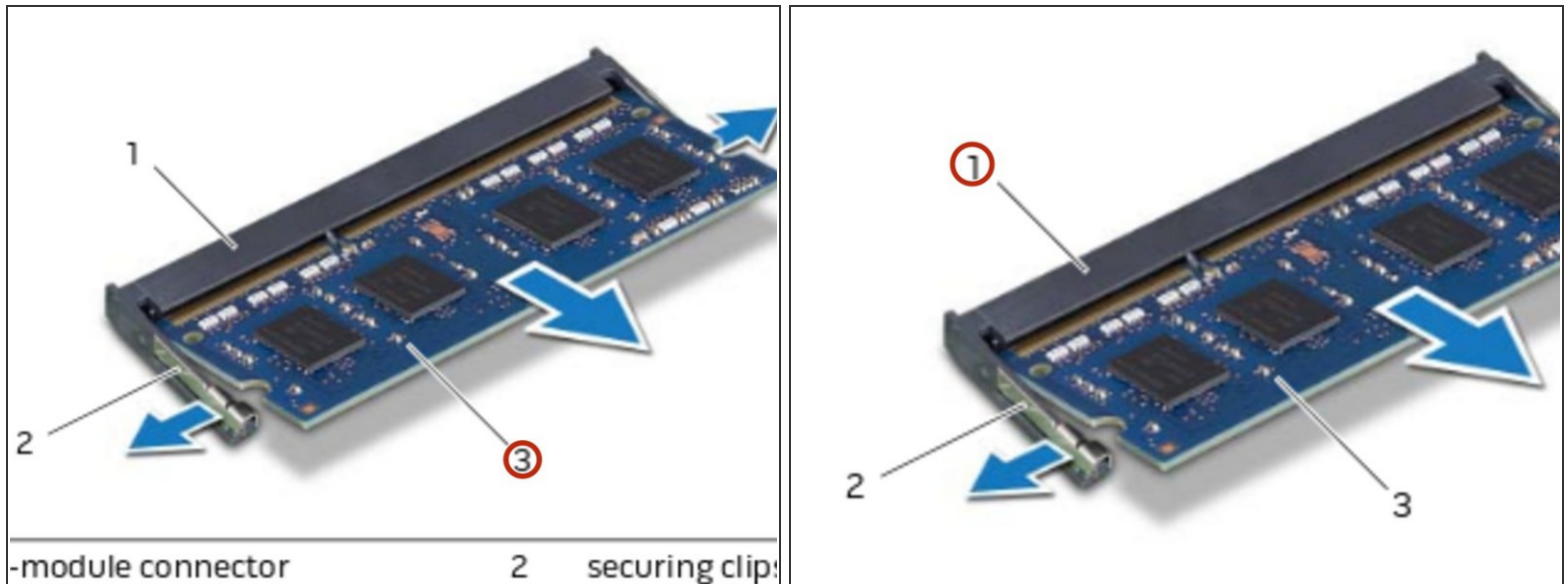
- Using your fingertips, carefully spread apart the securing clips at the sides of the memory-module connector until the memory module pops up.

## Step 45 — Slide and Remove



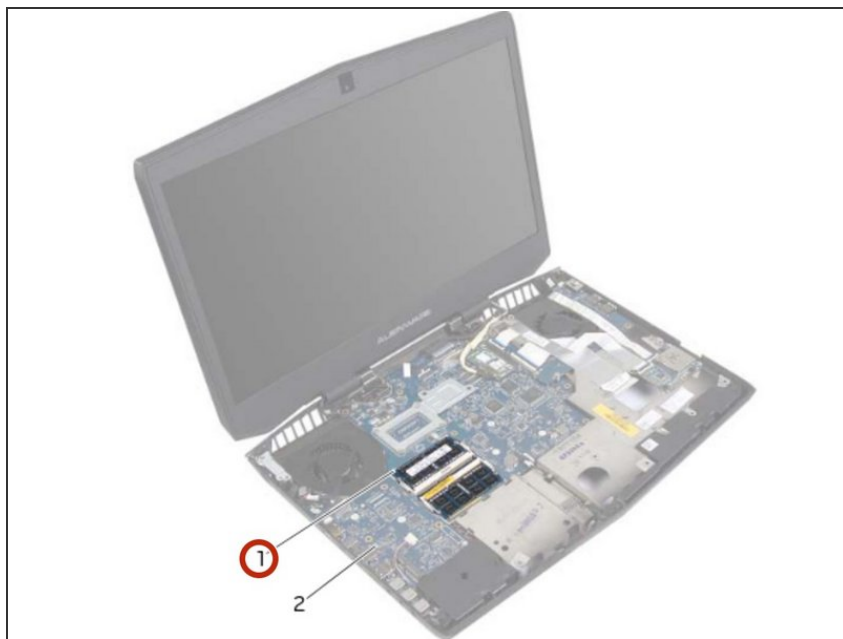
- Slide and remove the memory module from the memory-module connector.

## Step 46 — Align the Notch



- Align the notch on the **NEW** memory module with the tab on the memory-module connector.


## Step 47 — Add new module



- Slide the memory module into the connector or at a 45-degree angle, and press the memory module down

---

until it clicks in place. If you do not hear the click, remove and reinstall the memory module

-  The computer may not boot if the memory module is not installed correctly.
- 

To reassemble your device, follow these instructions in reverse order.