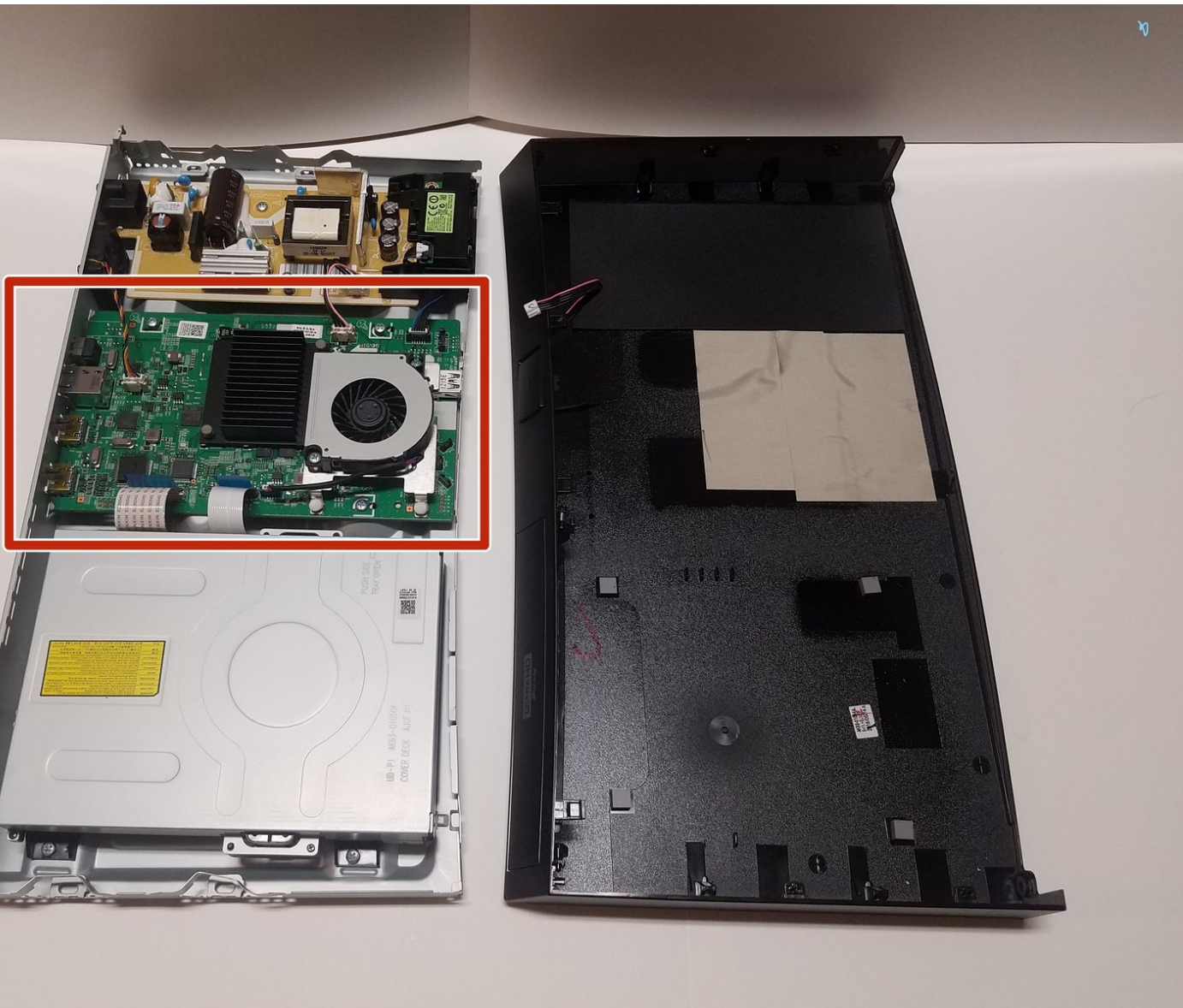




# Samsung UBD-KM85C Motherboard Replacement

If the Blu-Ray player should be in working order, however it still refuses to work then the Motherboard should be replaced.

Written By: James Edwards



---

## INTRODUCTION

Use this guide to remove the motherboard of your device.

---

### TOOLS:

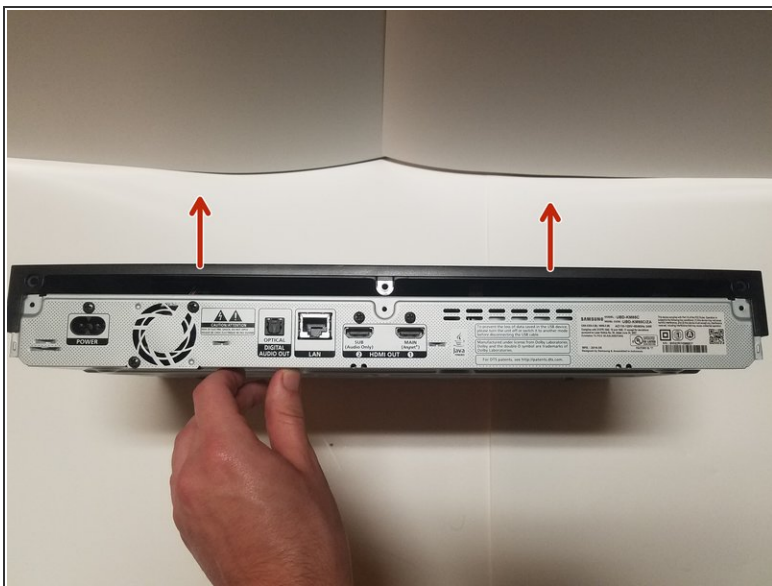
- [Phillips #1 Screwdriver](#) (1)
-

## Step 1 — Outer Shell



- On the back side of the unit, remove the three 8.1mm screws marked with a Phillips #1 screwdriver.

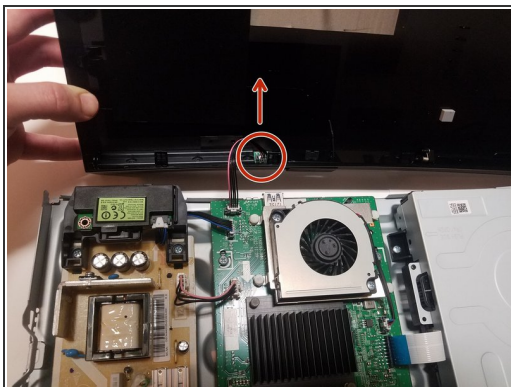
## Step 2



- From the back, lift the case upwards away from the unit then forwards, releasing the prongs on the front.



## Step 3



- There is one group of wires located towards the front of the case and attached directly to the motherboard and the case. Using two fingers in a pinching motion, release the wire from the clip and disconnect it.

## Step 4



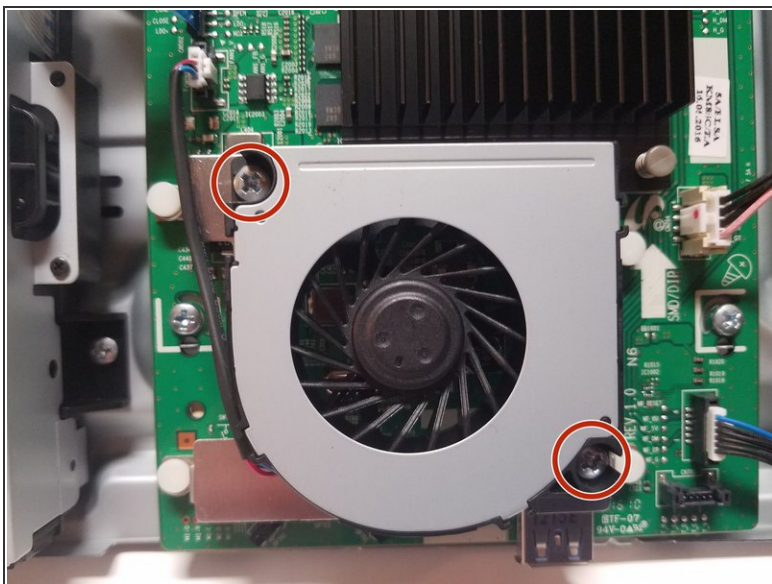
- Remove the cover from the device.

## Step 5 — Fan A



- Fan A is located on top of the motherboard and is screwed into a stand by two 6.5mm screws. The stand is also connected to the motherboard.

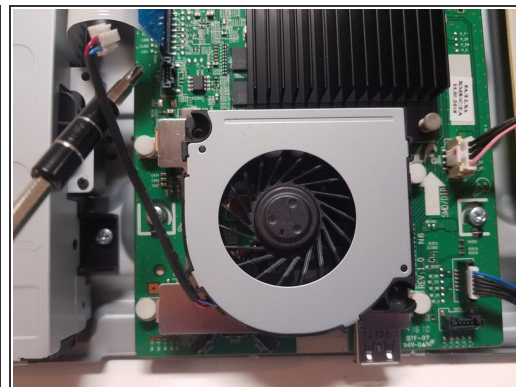
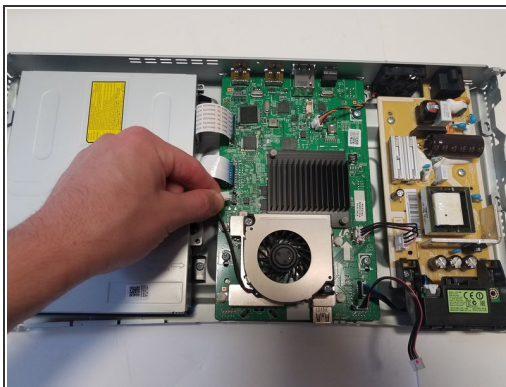
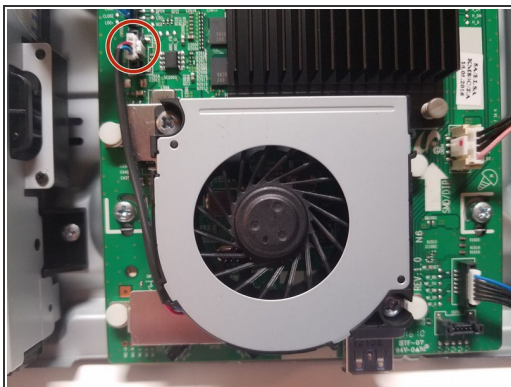
## Step 6



- The two 6.5mm screws holding the fan in place on opposing corners must be removed with a #1 Phillips head screwdriver to change the fan.



## Step 7



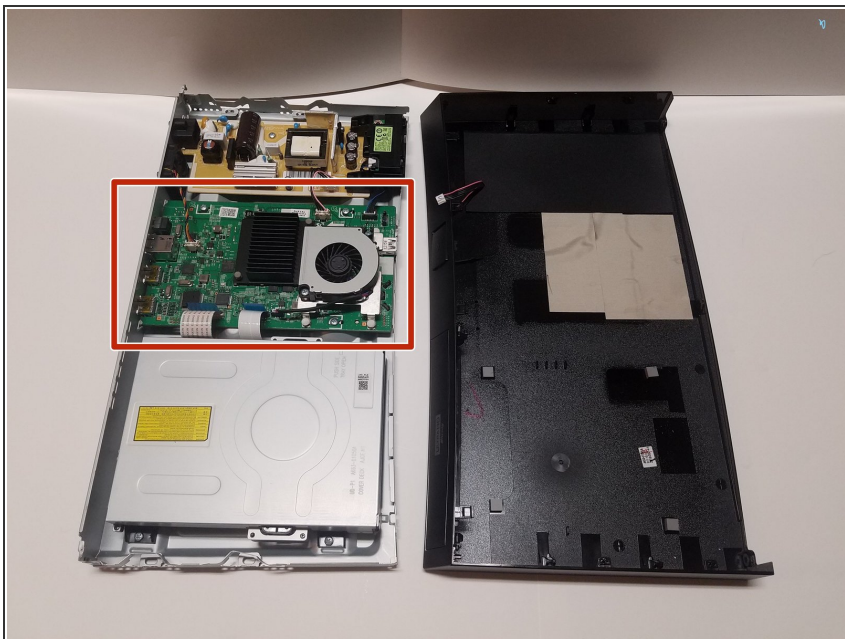
- There is one wire connecting the fan to the motherboard that must be unplugged in order to release it. To unplug, use your fingers to pinch the white clip at the end and gently pull upwards to release.

## Step 8



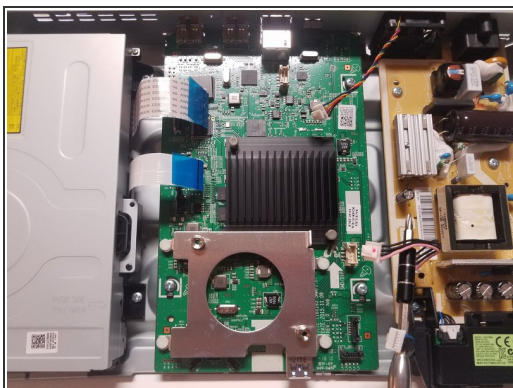
- The fan can now be lifted from the stand.

## Step 9 — Motherboard



- The motherboard is in the middle of the device and has all wires and connections of the device components running to it. The fan identified as fan A is located on top of it and must be removed first.

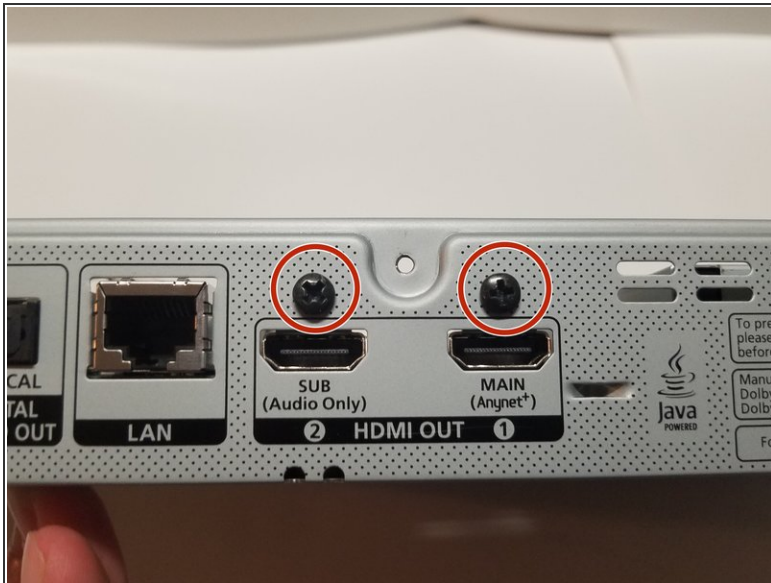
## Step 10



- Once the fan is removed, the wires should be disconnected from the motherboard, as shown.

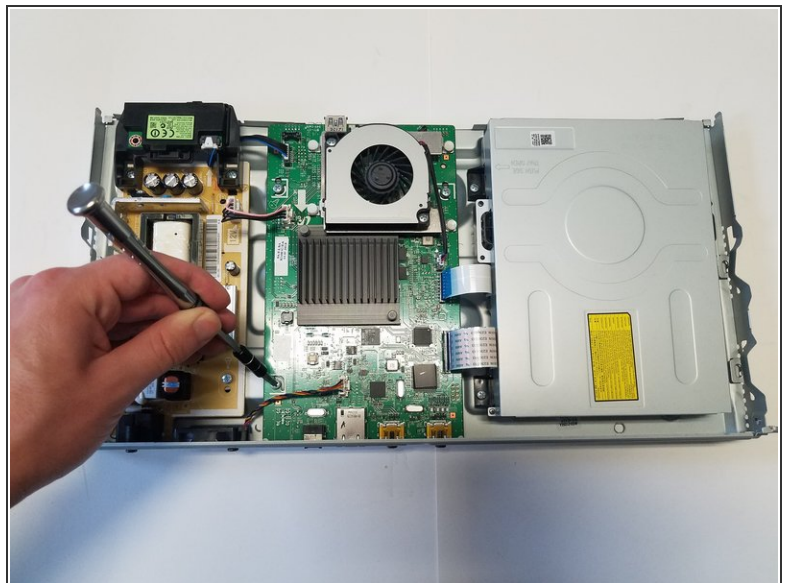
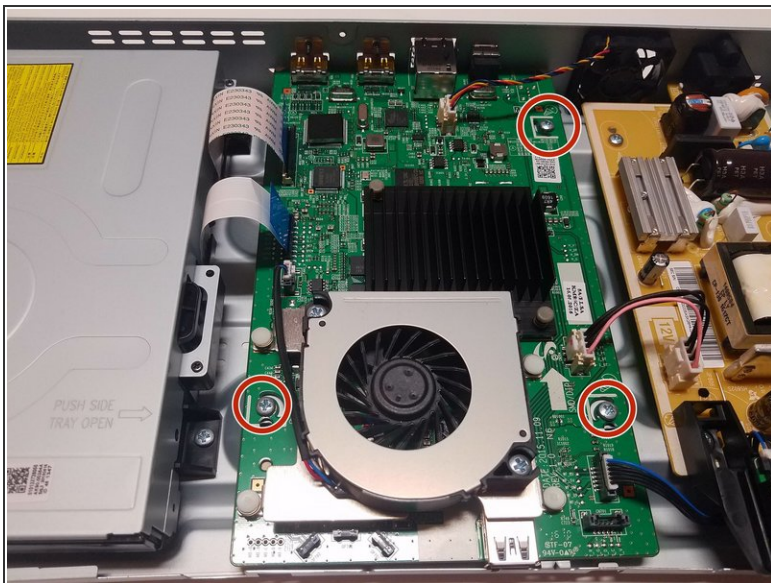


## Step 11



- Two outer 8.1mm screws located above the HDMI ports hold the motherboard in place and must be removed. Remove these with a #1 Phillips head screwdriver.

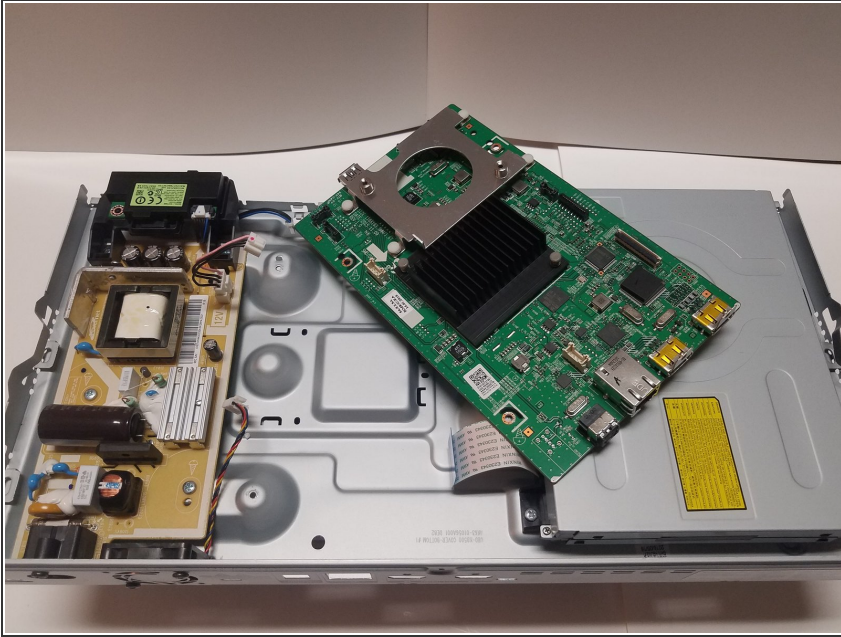
## Step 12



- Three inner 6.5mm Phillips #1 screws hold the motherboard to the base of the frame, and must be unscrewed next.



## Step 13



- After the final screw is removed, the motherboard can be easily lifted out of the case without disturbing any of the other device components.

To reassemble your device, follow these instructions in reverse order.