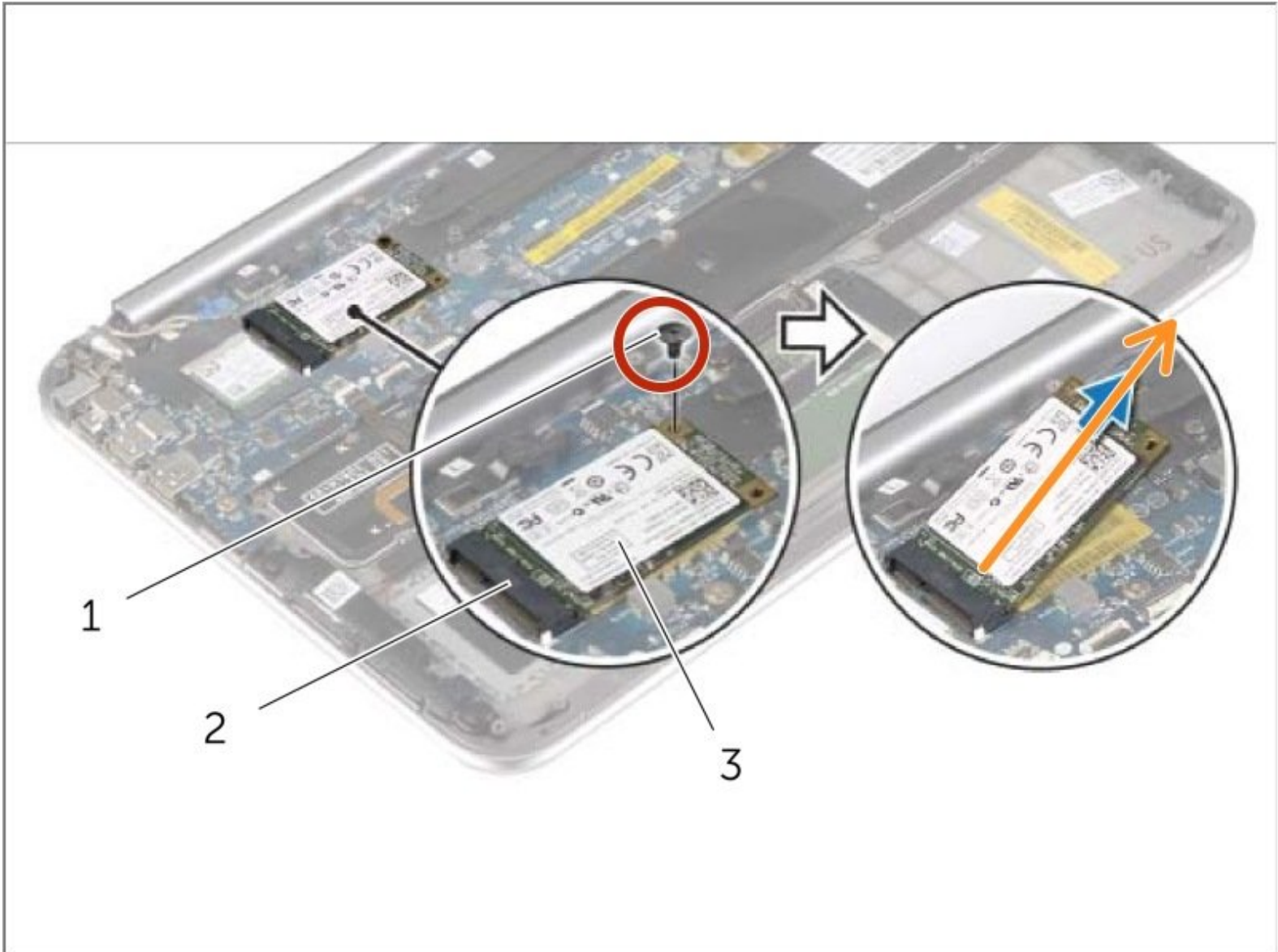




Dell XPS 12 9Q33 mSATA Card Replacement

Written By: Johnathan Hammond

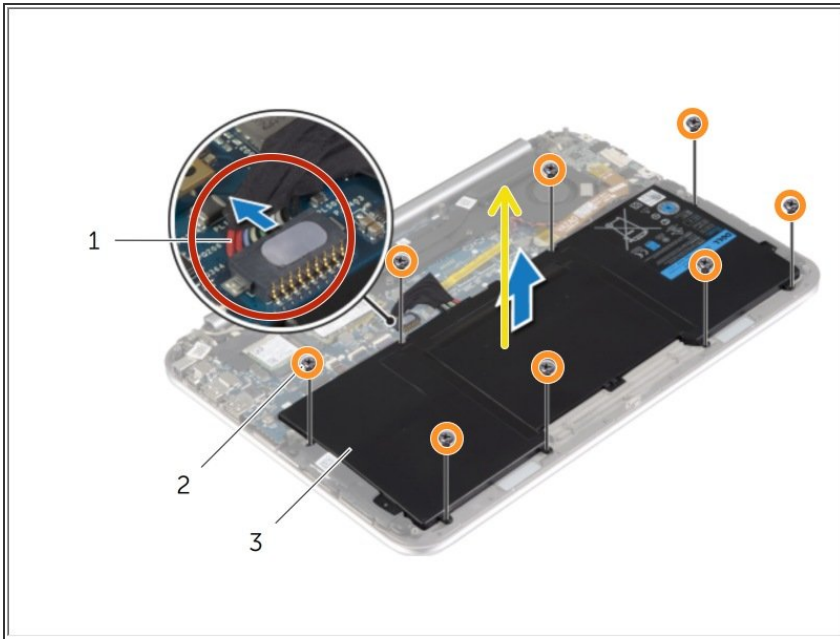




TOOLS:

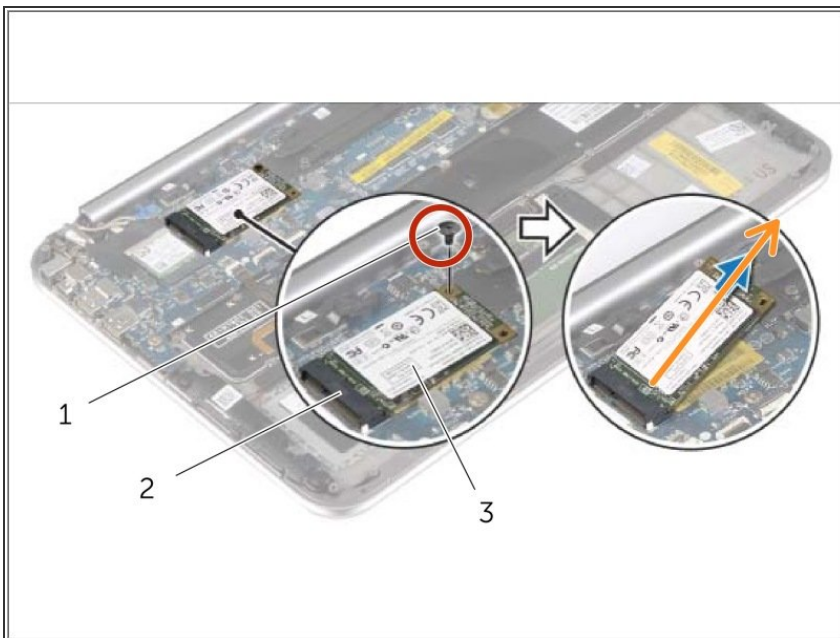
- [Phillips #0 Screwdriver](#) (1)
-

Step 1 — Removing the Battery



- Slide the battery cable connector out of its system board socket.
- ⚠ Pull parallel to the motherboard, not straight up, or you will damage the socket.
- Remove the screws that secure the battery to the palm-rest assembly.
- Lift and remove the battery along with its cable.
- ⓘ Slide and hold the power switch for about five seconds to ground the system board.

Step 2 — Removing the mSATA card



- Remove the screw that secures the mSATA card to the system board.
- Slide and remove the mSATA card out of the mSATA-card connector.
- ★ If this is all you are doing Follow Step In Reverse if not Go to Next Step.

To reassemble your device, follow these instructions in reverse order.