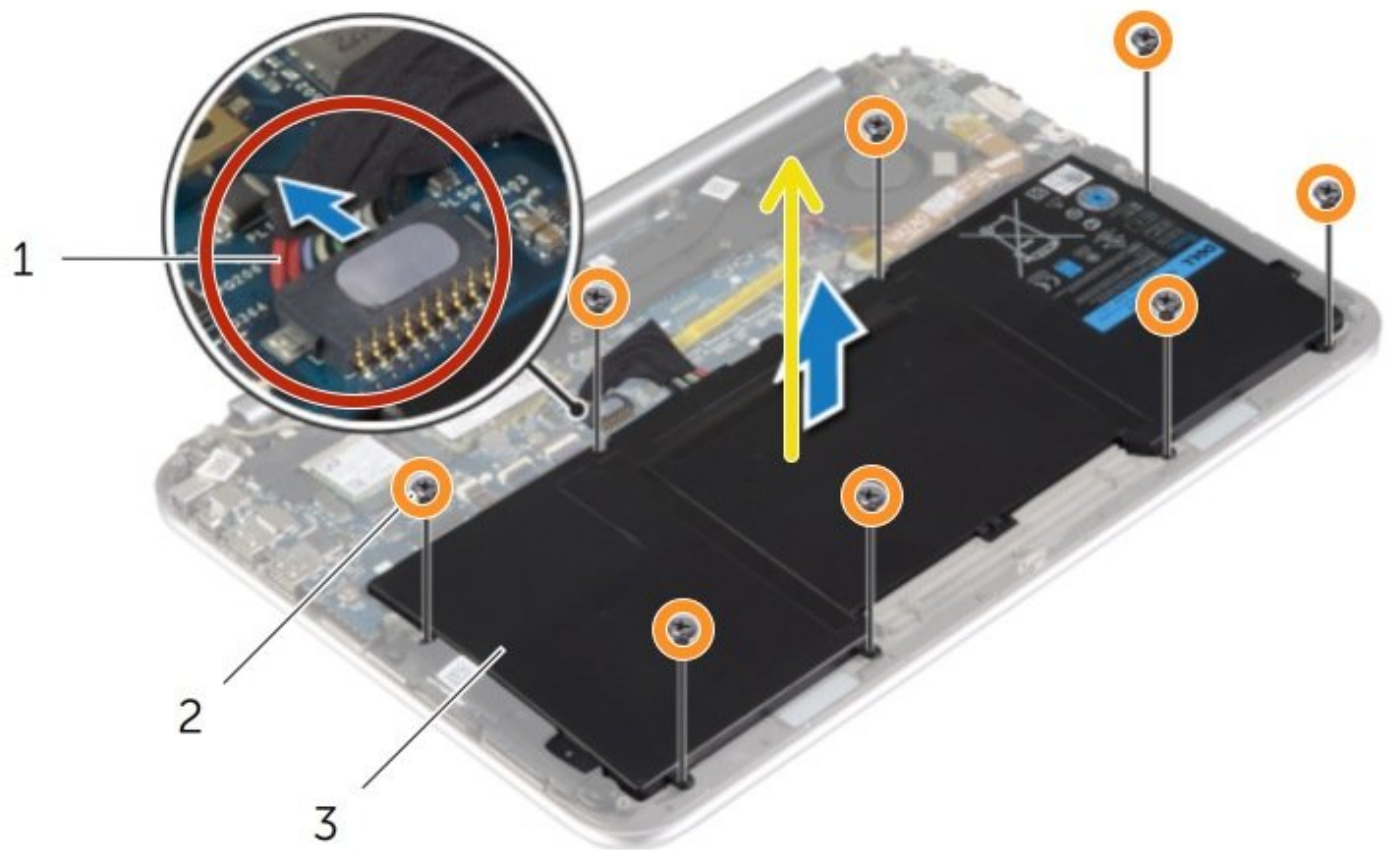




Dell XPS 12 9Q33 Battery Replacement

Written By: Johnathan Hammond



INTRODUCTION

In this guide, we will be showing you how to remove and replace the Battery.



TOOLS:

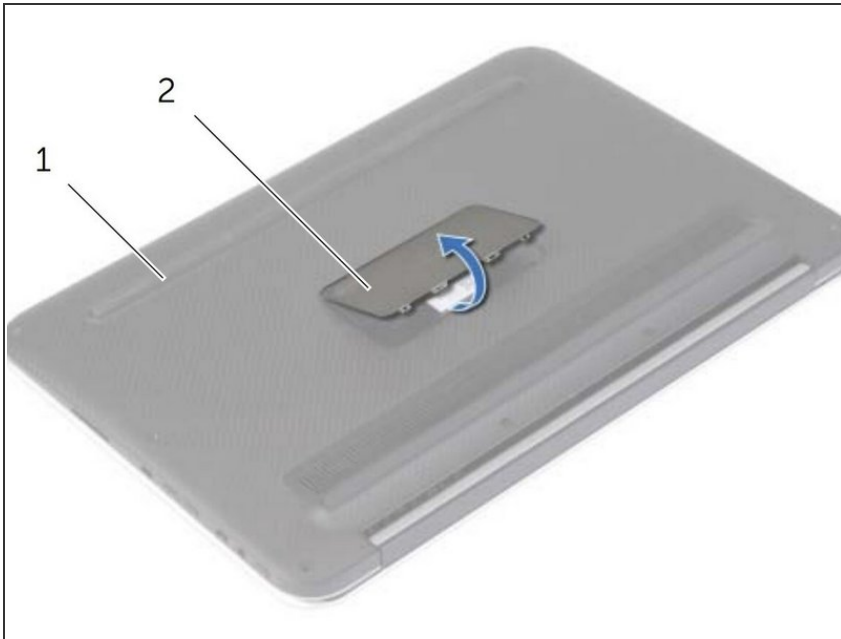
- [Phillips #0 Screwdriver](#) (1)



PARTS:

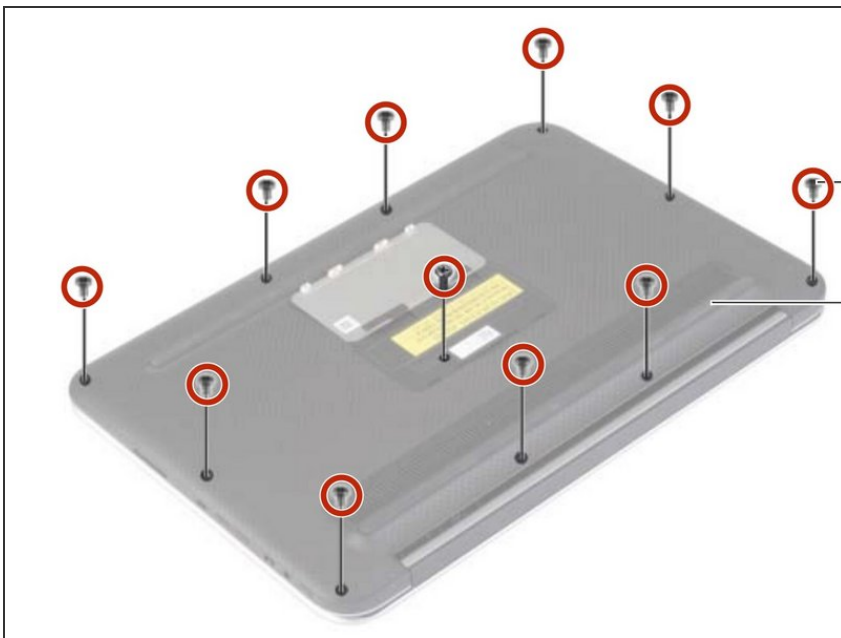
- [Dell XPS 12 9Q33/L221X, and XPS 13 9333 Replacement Battery](#) (1)

Step 1 — Back Cover



- **i** Be sure to power off and unplug your device before you begin your repair.
- Use your fingers or a spudger to pry up the system badge from the bottom of the laptop.

Step 2



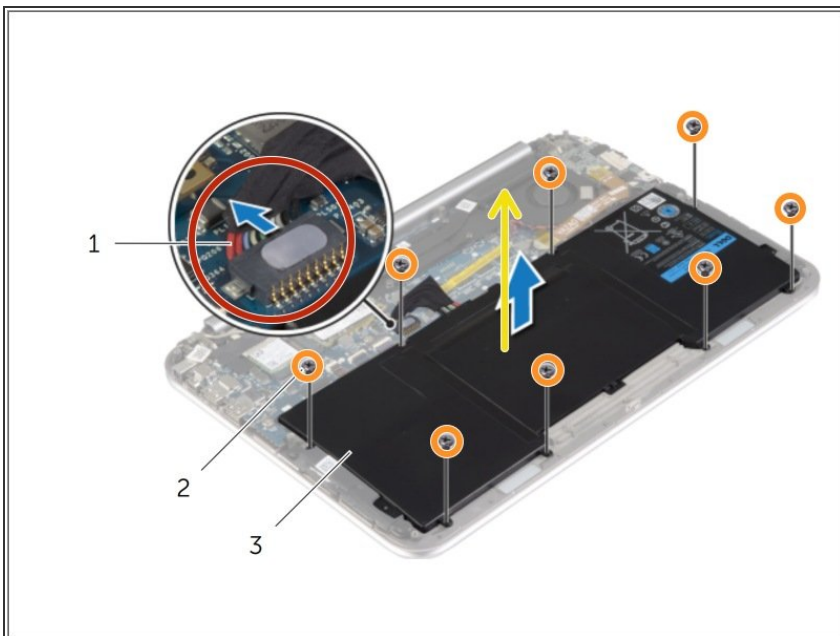
- Use a Phillips screwdriver to remove the eleven screws securing the base cover.

Step 3



- Beginning with the side opposite the power switch, use your fingers to pry up the base cover from the laptop.
- Carefully lift the base cover around the power switch and remove the cover.

Step 4 — Removing the Battery



- Slide the battery cable connector out of its system board socket.
 - ⚠ Pull parallel to the motherboard, not straight up, or you will damage the socket.
- Remove the screws that secure the battery to the palm-rest assembly.
- Lift and remove the battery along with its cable.
- ⓘ Slide and hold the power switch for about five seconds to ground the system board.

To reassemble your device, follow these instructions in reverse order.

Take your e-waste to an [R2 or e-Stewards certified recycler](#).

Repair didn't go as planned? Try some [basic troubleshooting](#), or ask our [Answers community](#) for help.