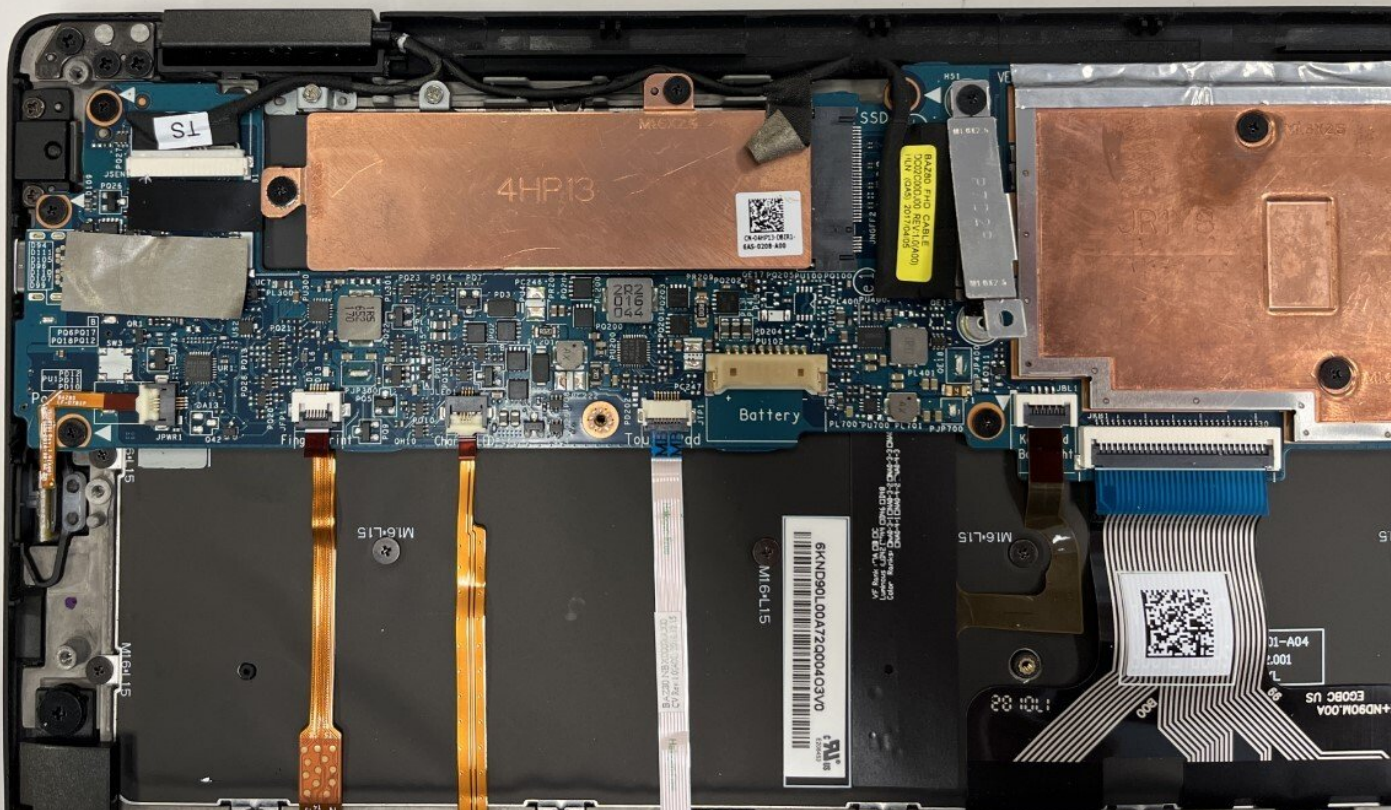




# Dell XPS 13 9365 2-in-1 Solid-State Drive Replacement

Use this guide to remove or replace your...

Written By: Johnathan Hammond



# INTRODUCTION

Use this guide to remove or replace your laptop's solid-state drive. The solid-state drive is the laptop's main file-storage device. This guide contains simple steps, but the SSD is fragile so be careful when removing or replacing it.



## TOOLS:

- [Phillips #000 Screwdriver](#) (1)
- [T4 Torx Screwdriver](#) (1)



## PARTS:

- [Crucial P3 NVMe PCIe M.2 2280SS SSD](#) - solid performance, switching from HDD or SATA to NVMe™ (1)
- [Crucial P3 Plus NVMe PCIe M.2 2280SS SSD](#) - fast Gen4 NVMe™ storage for data-intensive applications (1)
- [Crucial P5 Plus NVMe PCIe M.2 2280SS SSD](#) - professionals, creatives, and hardcore gamers (1)

## Step 1 — Battery



- Use a Torx T4 screwdriver to remove the eight screws (M2x3) that secure the base cover to the palm-rest assembly.

## Step 2



- Use your fingertips to lift the system badge open and reveal the single case screw.
- Use a Phillips #000 screwdriver to remove the screw (M1.6x4) that secures the base cover to the palm-rest assembly.

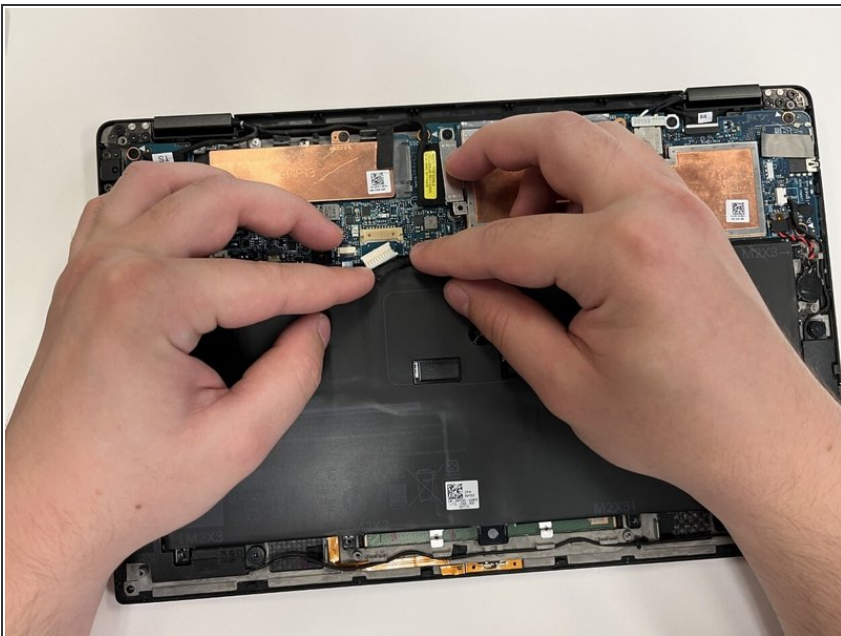


### Step 3



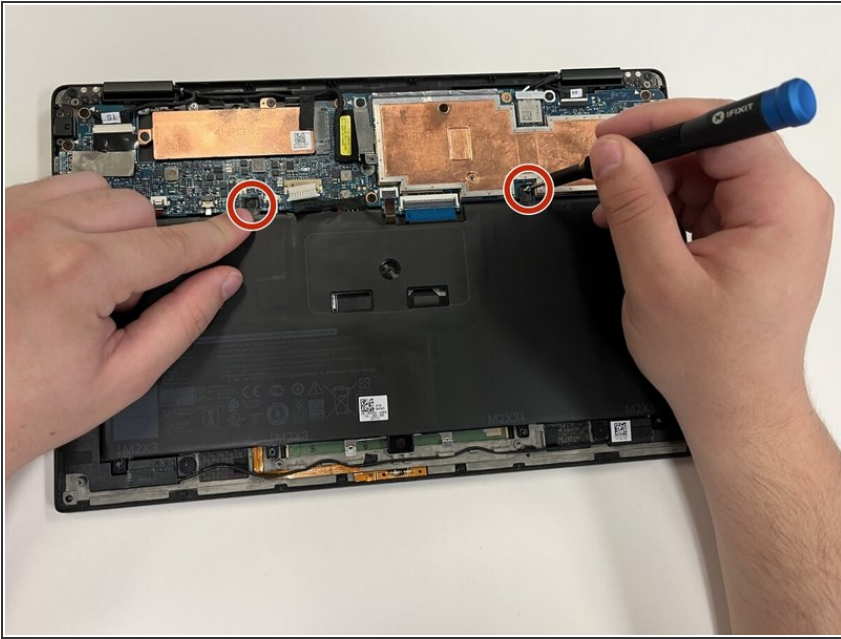
- Starting from the front corner of the computer, pry up the base cover using a spudger and lift the base cover off the palm-rest assembly.

### Step 4



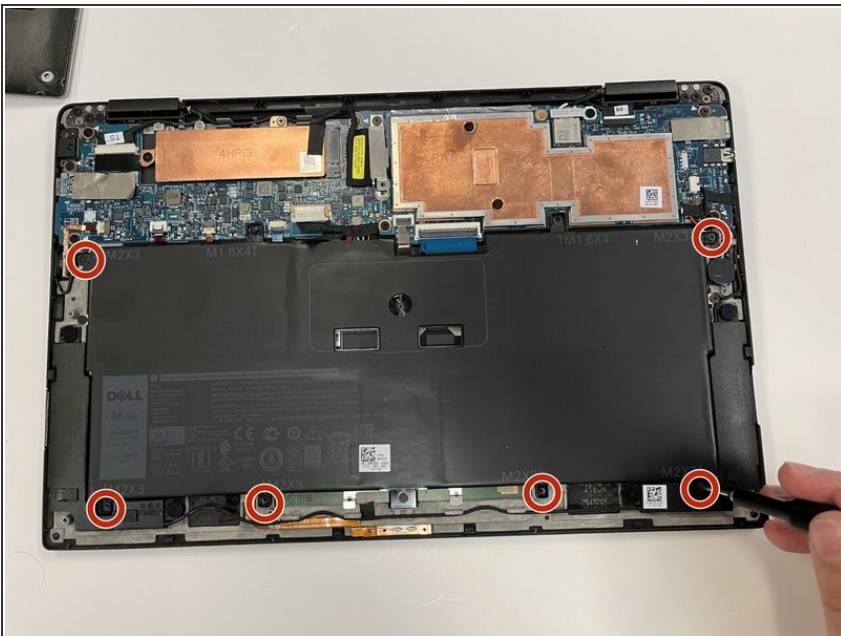
- Disconnect the battery cable from the system board.

## Step 5



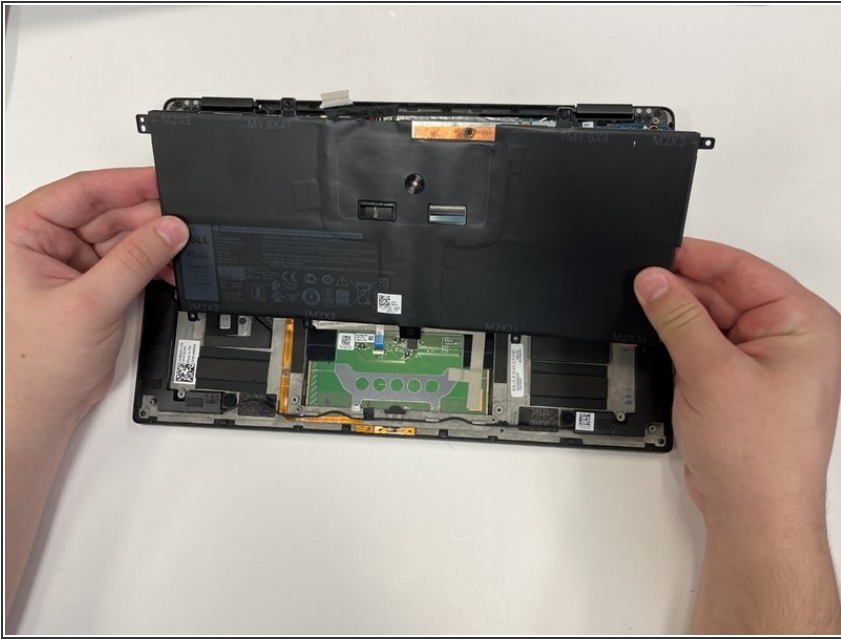
- Use a Phillips #000 screwdriver to remove the two screws (M1.6x4) that secure the battery to the palm-rest assembly.

## Step 6



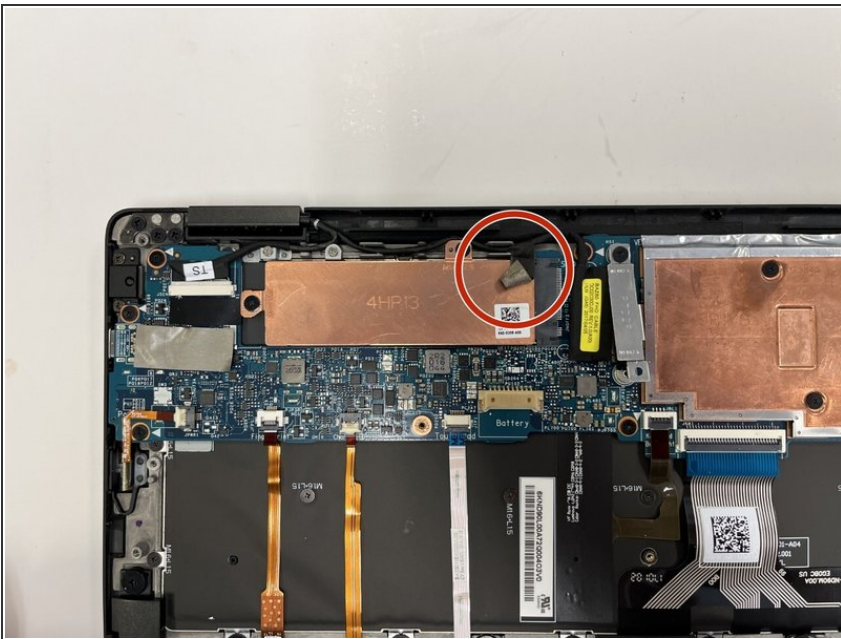
- Use a Phillips #000 screwdriver to remove the six screws (M2x3) that secure the battery to the palm-rest assembly.

## Step 7



- Lift the battery off the palm-rest assembly.

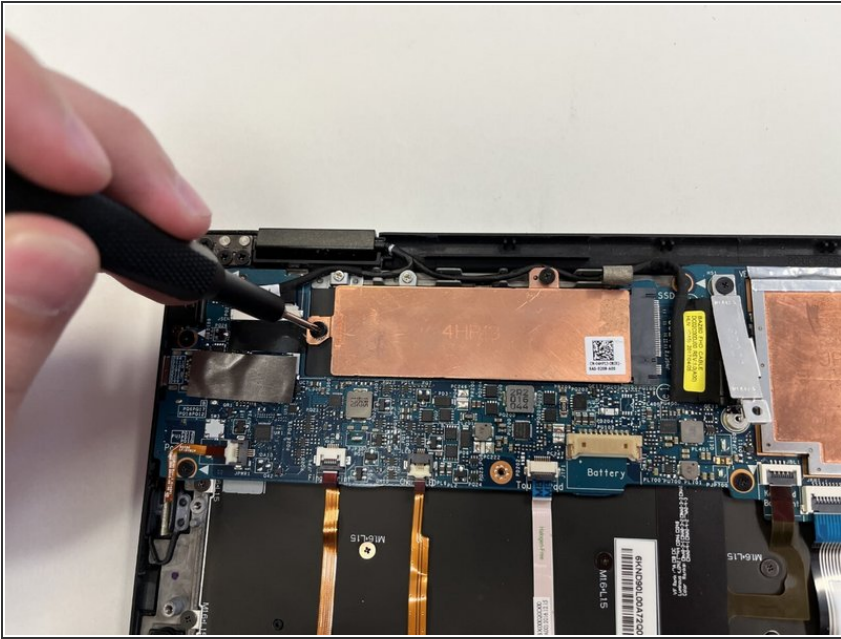
## Step 8 — Removing the Solid-State Drive



- Peel off the display cable tape from the hard-drive plate.

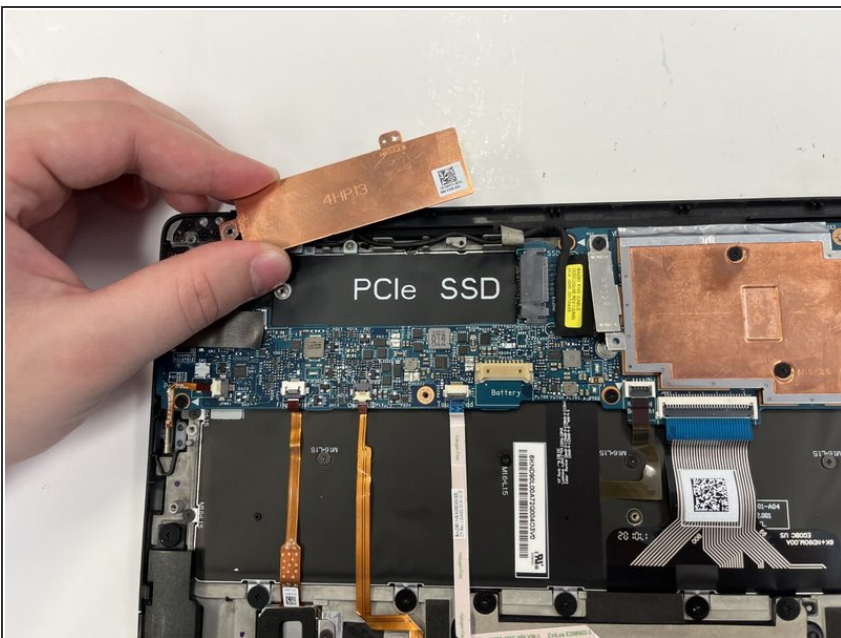


## Step 9



- Remove the two screws (M1.6x2.5) that secure the hard-drive plate to the system board with a Phillips 000 screwdriver head.

## Step 10



- Remove the hard-drive plate.

## Step 11



- Gently slide and remove the solid-state drive from the solid-state drive slot (SSD not pictured in image).

**⚠ Solid-state drives are fragile. Exercise care when handling the solid-state drive.**

To reassemble your device, follow these instructions in reverse order.