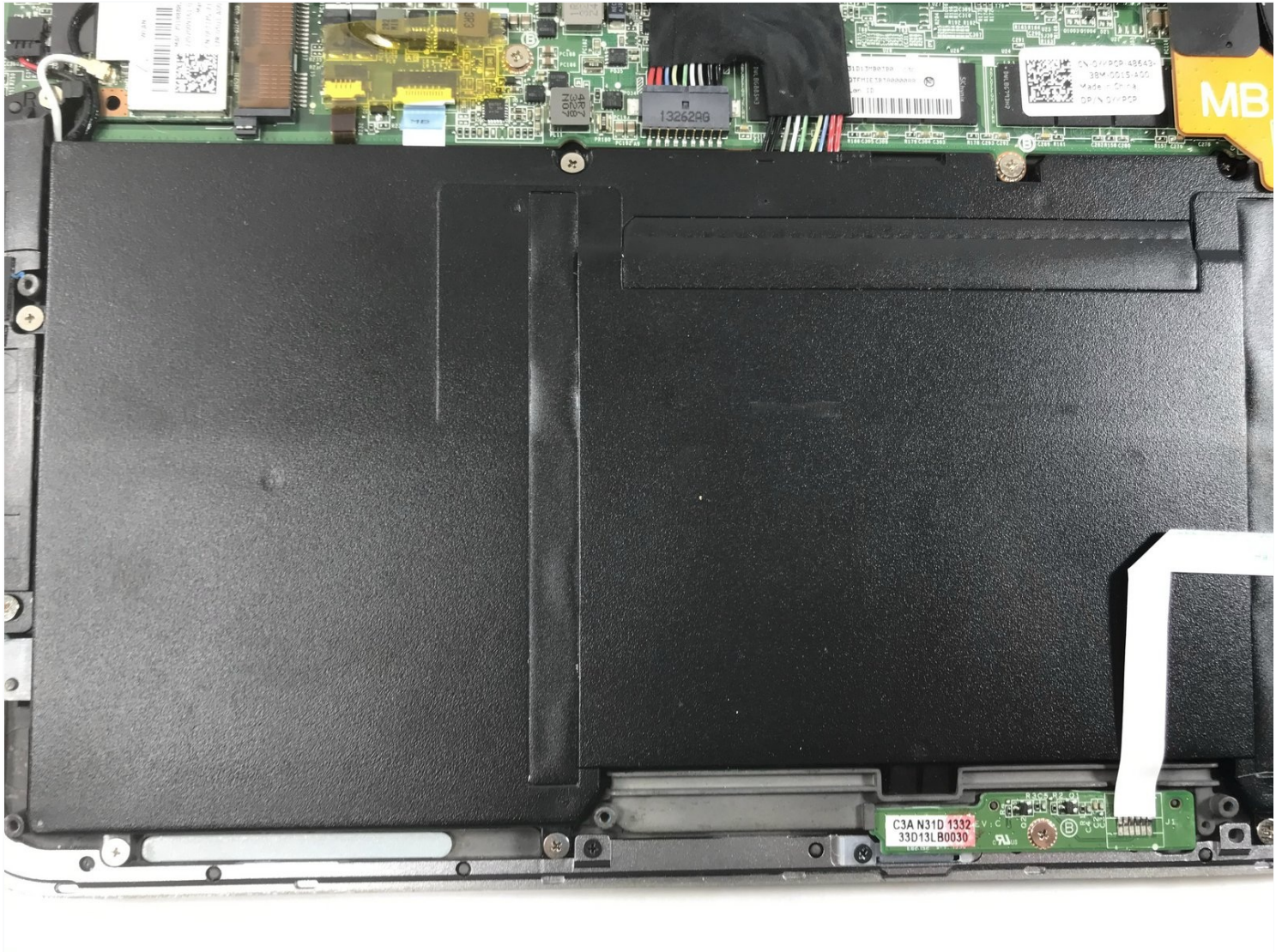




Dell XPS 13 L322X Battery Replacement

The battery may either be damaged or have...

Written By: Johnathan Hammond



INTRODUCTION

The battery may either be damaged or have enough capacity to sustain the charge it is holding. These are the necessary steps you can take to replace it.

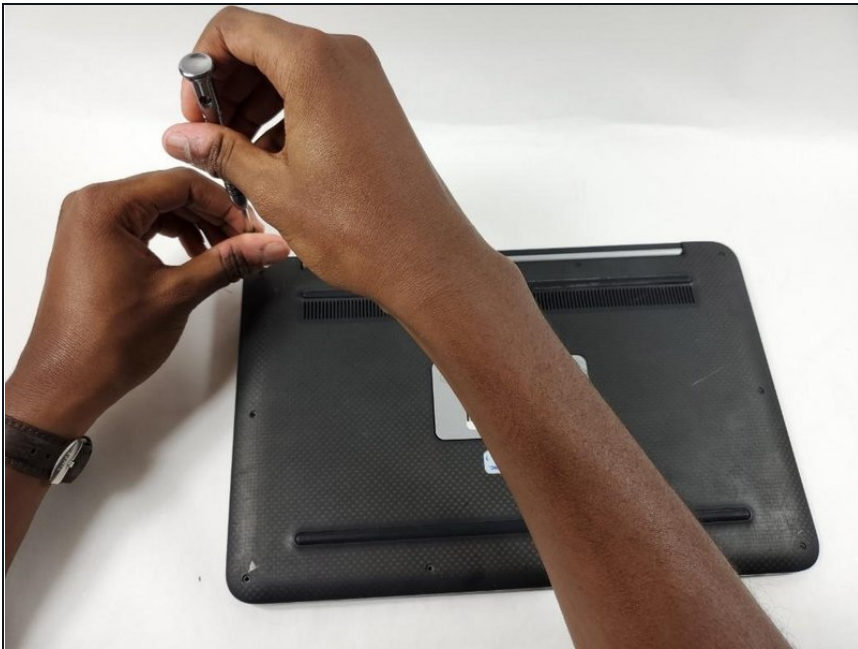
TOOLS:

T5 Torx Screwdriver (1)
Phillips #0 Screwdriver (1)

PARTS:

Dell XPS 12 9Q33/L221X, and XPS 13 9333 Battery (1)

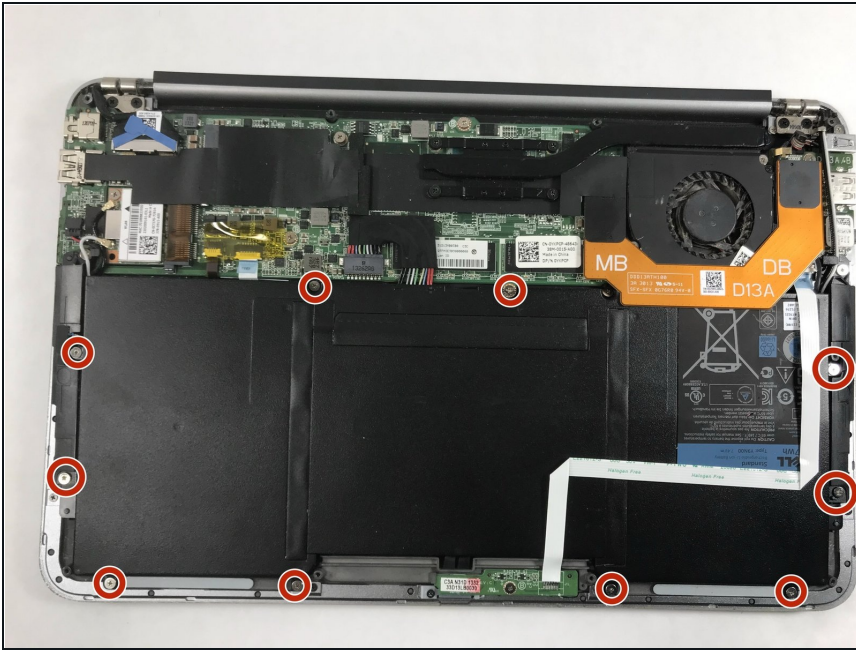
Step 1 — Base Plate



 **Shut down and unplug the device before beginning.**

- Use a Torx T5 screwdriver to remove the 10 screws from the computer's base plate.
- Use a prying tool or a fingernail to lift up and remove the base cover.

Step 2 — Battery



- Use a Phillips #0 screwdriver to remove all of the screws securing the battery.
- Use a spudger to lift the edge of the battery, then carefully remove it.

To reassemble your device, after the new battery has been put in place, screw all 10 screws back on the base cover.