



# HTC Rezound Front Camera Replacement

This guide is intended to help you remove and...

Written By: Evan Swartz



# INTRODUCTION

This guide is intended to help you remove and replace the forward facing camera on the HTC Rezound.

---

## TOOLS:

[T4 Torx Screwdriver](#) (1)  
[TR7 Torx Security Screwdriver](#) (1)  
[Spudger](#) (1)  
[Tweezers](#) (1)  
[iFixit Opening Tool](#) (1)

## PARTS:

[HTC Rezound Front Camera](#) (1)

---

## Step 1 — Battery



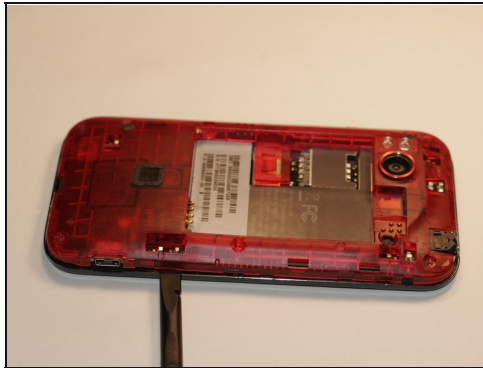
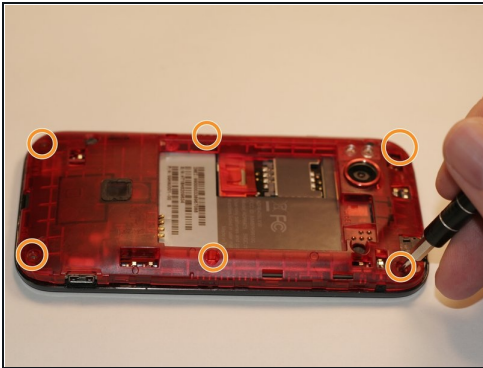
- Use a plastic opening tool or your fingers to get into the groove between the cover and case. Remove the back covering so that the red battery is visible.

## Step 2



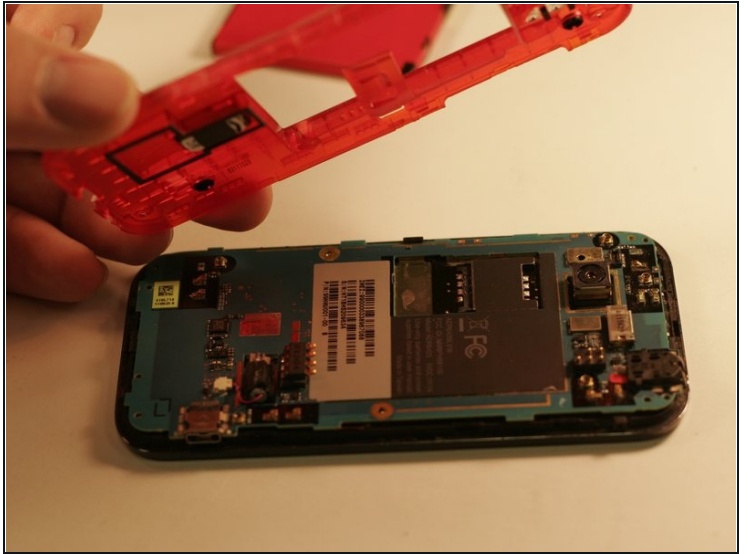
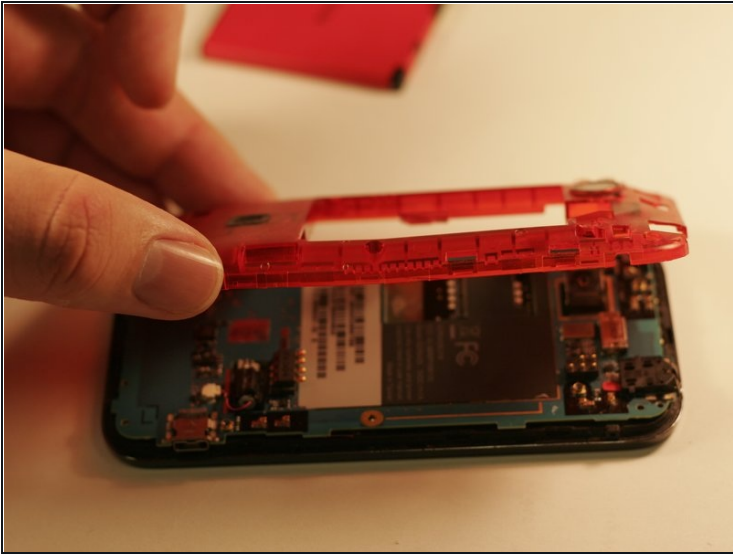
- Remove the red battery to replace.

## Step 3 — Screen



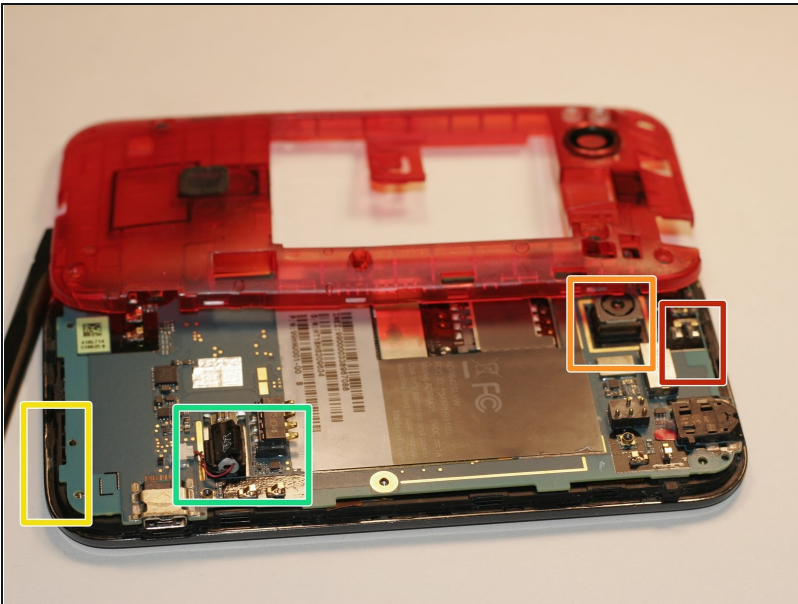
- Unscrew the six screws (Torx T4 size) shown in the photo.
- Use the spudger to pry the casing off of the phone.

## Step 4



- Gently remove the casing from the phone.

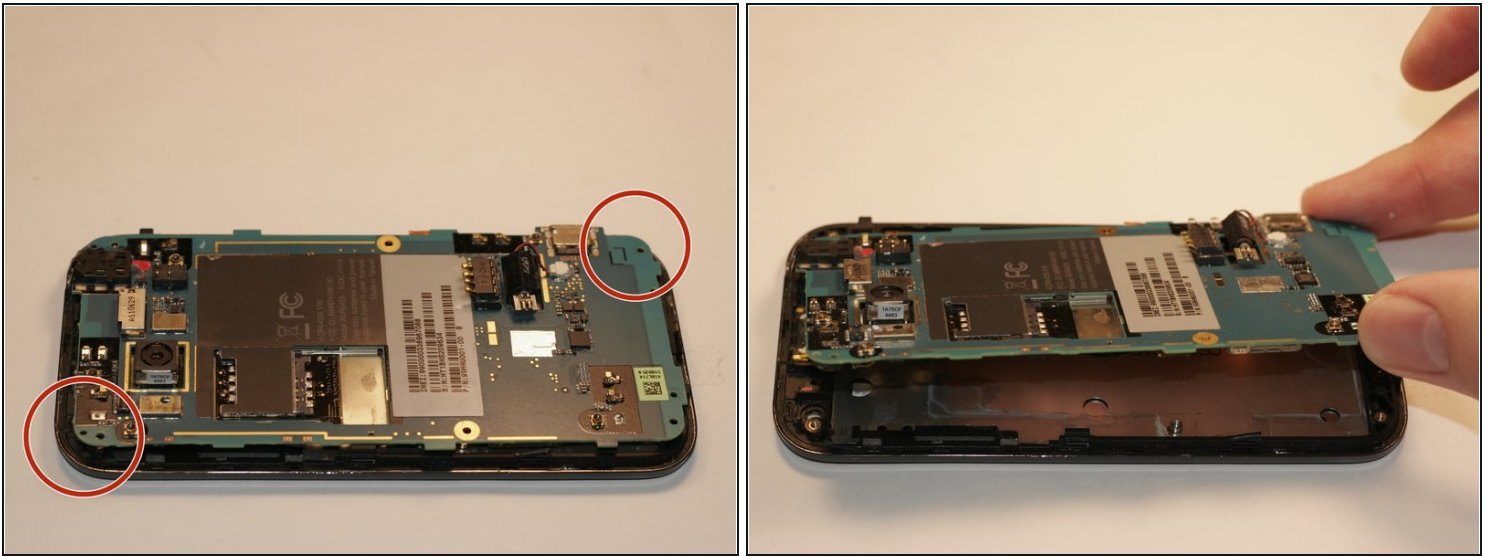
## Step 5



- After the red casing is removed, the following components should be visible:
- Main Camera
- Headphone Jack
- Vibration moter

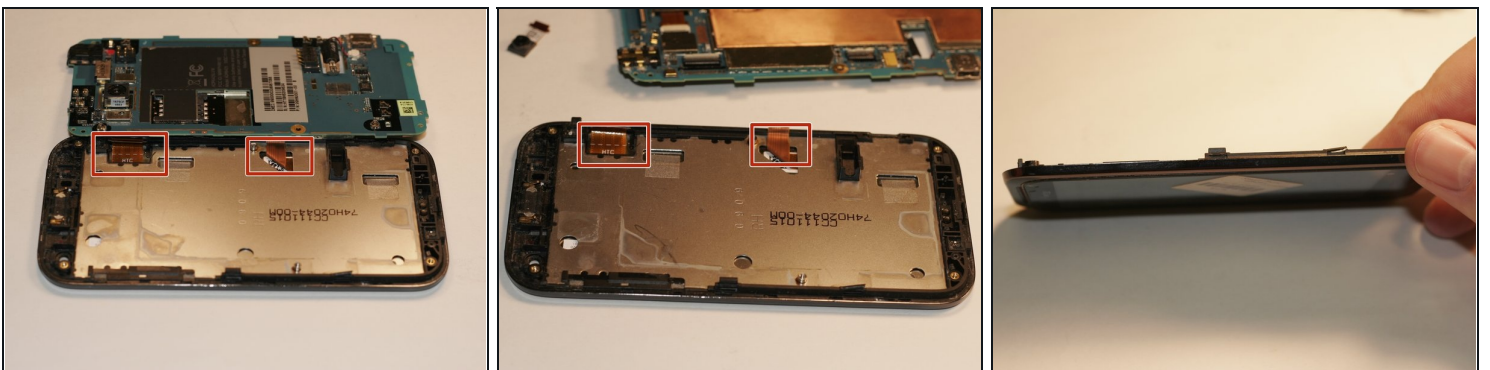


## Step 6



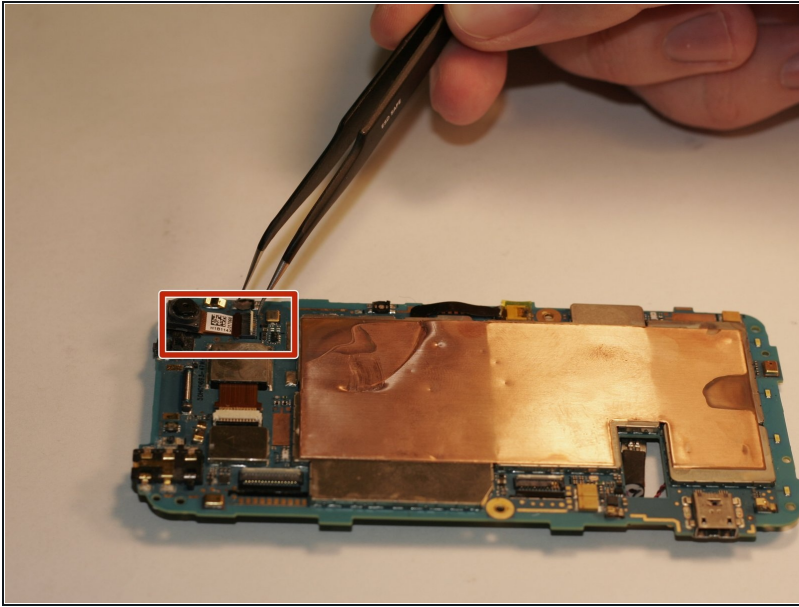
- Remove the 2 screws (Torx T7 size), which are located on the upper left and lower right sides of the device.

## Step 7



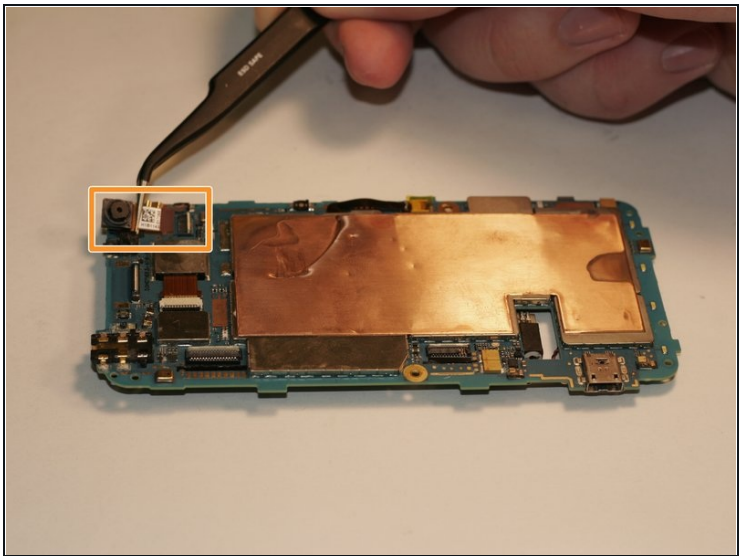
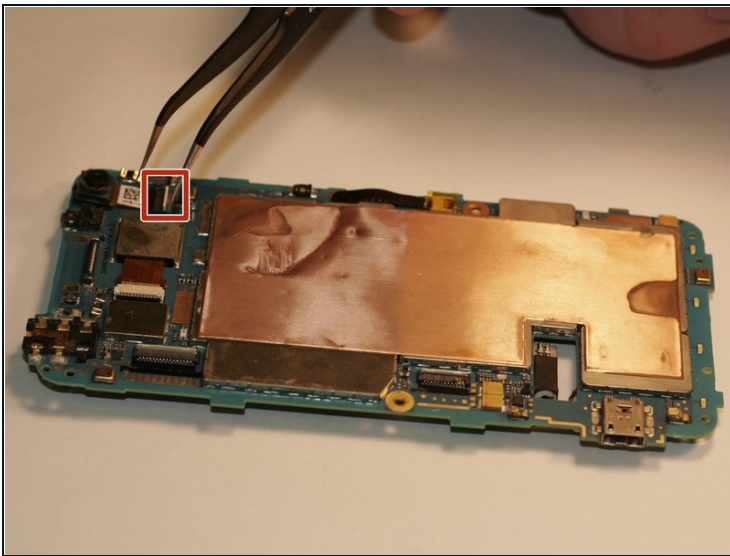
- Using [tweezers](#), flip the latch on the ribbon cables connecting the logic board to the screen and display. The screen and display for the HTC Rezound are likely fused to one another, so if you are replacing one you will likely need to replace both of them.
- At this point all that's left is to insert the ribbon cables of your replacement into the same slot on the motherboard!

## Step 8 — Front Camera



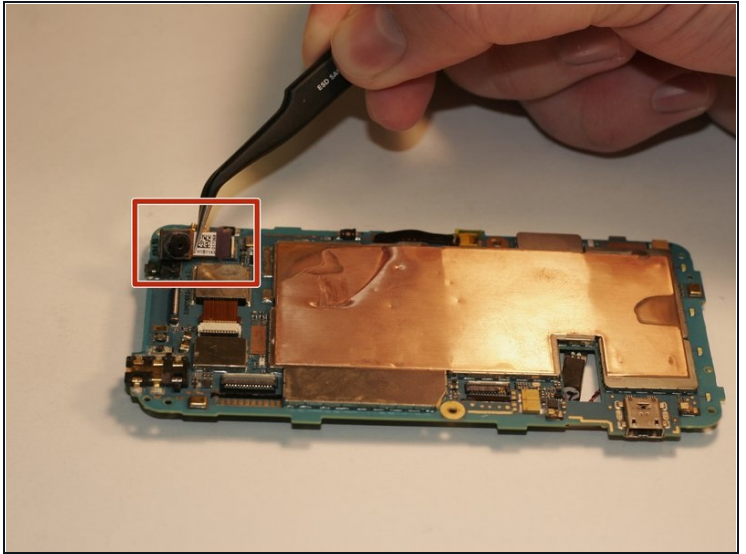
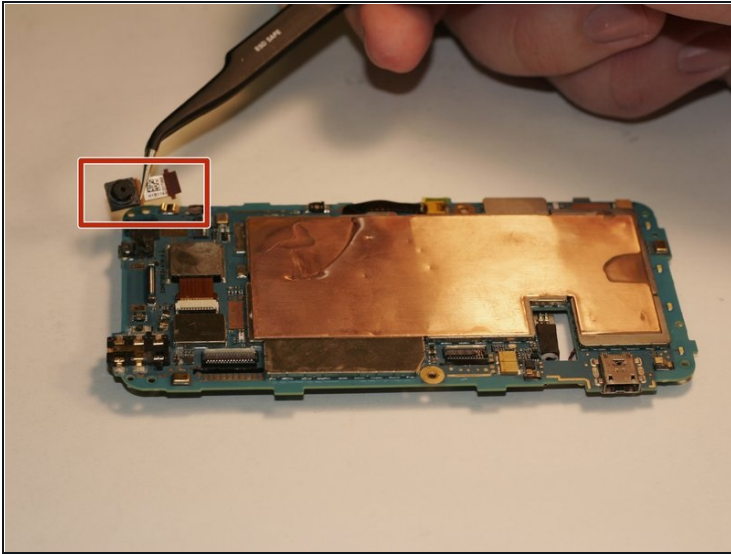
- Shown here is the camera that you will be replacing today!

## Step 9



- Carefully flip the latch for the ribbon cable that connects the camera to the logic board.
- Firmly grasp the cable, without crimping it, and slid it out of the slot.

## Step 10



- Take the replacement camera and start to line it up with the slot in the logic board.
- Fix ribbon cable to the slot and turn the latch back down to lock in place.

---

To reassemble your device, follow these instructions in reverse order.