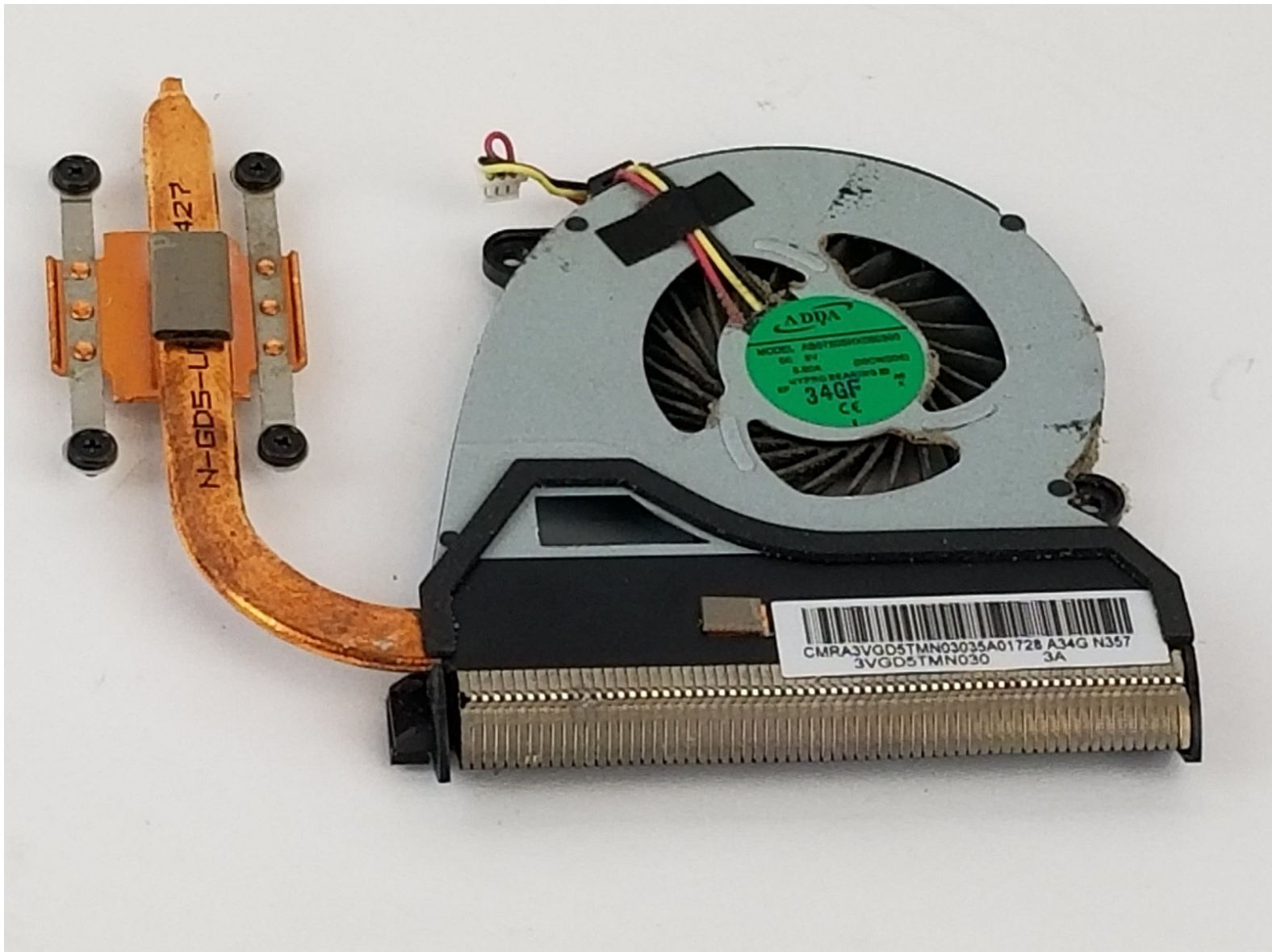




# Sony Vaio Fit SVF14A190X Fan Replacement

Fan replacement for the Sony Vaio Fit SVF14A190X

Written By: Bryan J. Hartman



# INTRODUCTION

This is an easy to follow, step by step guide to help aid in the replacement of a fan for the Sony Vaio Fit SVF14A190X. The fan helps keep your device at cool operating temperatures to prevent overheating.




## TOOLS:

- [iFixit Opening Tools](#) (1)
  - [Phillips #0 Screwdriver](#) (1)
-

## Step 1 — Battery Replacement



 Make sure the battery is drained or the computer is turned off.

- Use the Phillips head screw driver to remove the eleven 6 mm screws.
- Use the Phillips head screw driver to remove the one 4 mm screw securing the CD drive.

## Step 2



- Insert the plastic opening tool into the slit of the CD drive.
- Then pull it outwards.
- Grab the CD drive with your hand.
- Take the CD drive all the way out.

## Step 3



- Insert the plastic opening tool into the slit between the back cover and the rest of the computer.
- Move the plastic opening tool around all sides of the device.
- Peel off the back cover.

## Step 4



- Use the Phillips head screw driver to remove the four 7 mm screws.
- Lift the battery out with your hand.

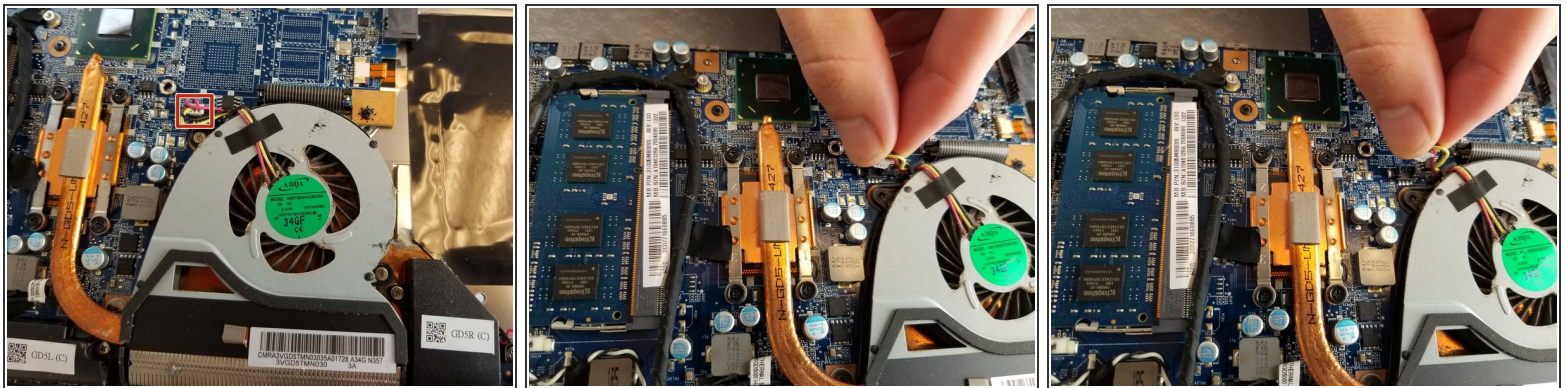


## Step 5 — Fan Replacement



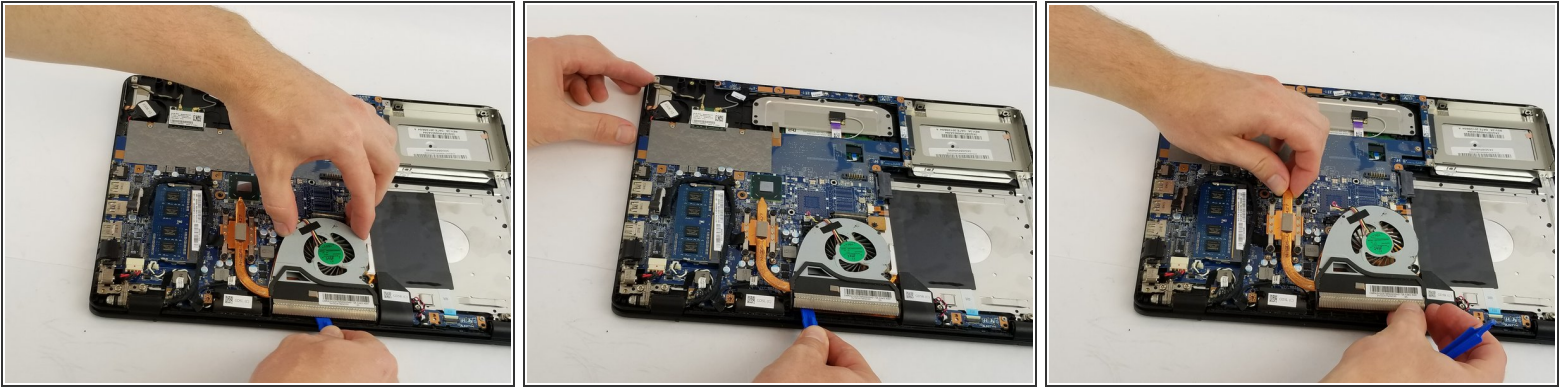
- Use the Phillips head screw driver to remove the two 5 mm screws on the fan.
- Loosen the four screws with the Phillips head screw driver on the copper cooling component. These screws will not come all of the way out.

## Step 6



- Gently grab the base of the fan wire connection.
- Pull the base of the wire connection from the motherboard to disconnect the wires.

## Step 7



- Once the prior two steps have been completed, obtain the plastic opening tool.
- Gently place the plastic opening tool underneath the fan and separate the fan from the device by sliding the tool along the bottom of the fan.
- Once separated, you can now lift the fan out by hand.

To reassemble your device, follow these instructions in reverse order.