



# Blackberry Bold 9900 Memory Card Replacement

This guide will show you how to replace the memory card in the BlackBerry Bold 9900.

Written By: Sowmika



## INTRODUCTION

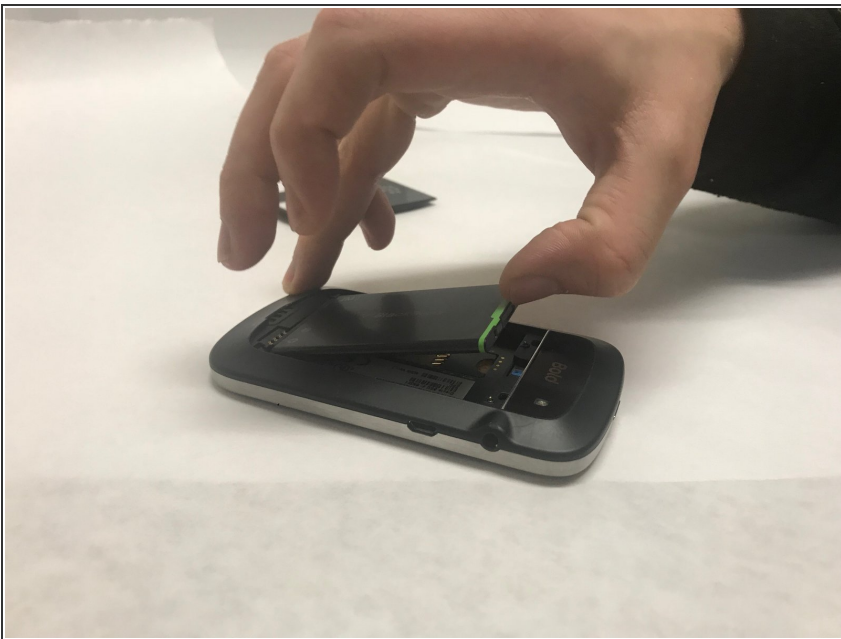
Replacement of the Memory Card is a simple replacement that will improve storage capabilities on the phone. The Memory Card is fragile and must be handled with care.

## Step 1 — Battery



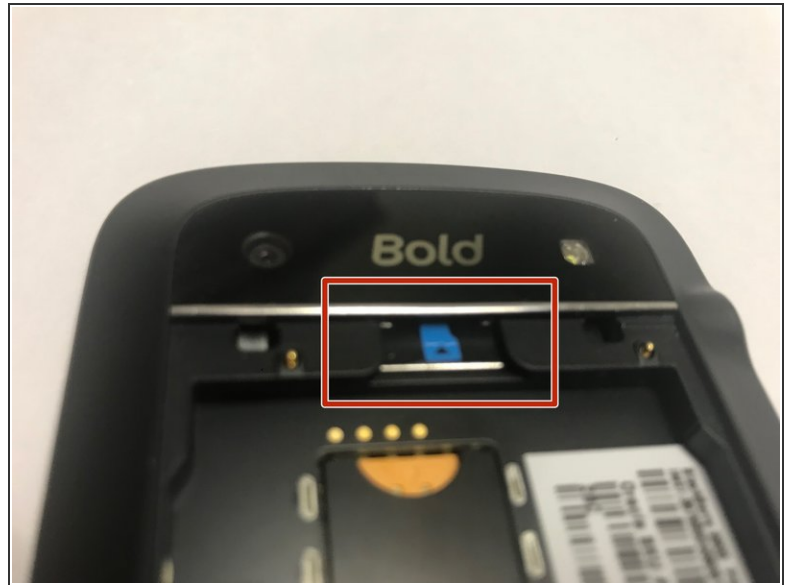
- Place phone screen down.
- Use your finger to lift upward on the battery case.
- Pull the cover away from the battery.

## Step 2



- Lift the edge of battery with the green stripe upward to remove battery.

### Step 3 — MicroSD card



- The MicroSD card is located where the red rectangle is shown.
- To remove MicroSD card, push the card inward towards the top of the phone then release. The MicroSD card will be ejected.

### Step 4 — Mini-SIM removal



- The Mini-SIM card is located inside the red rectangle.
- To remove the Mini-SIM Card, push and slide the card inward towards the top of the phone. It will be ejected.

To reassemble your device, follow these instructions in reverse order.