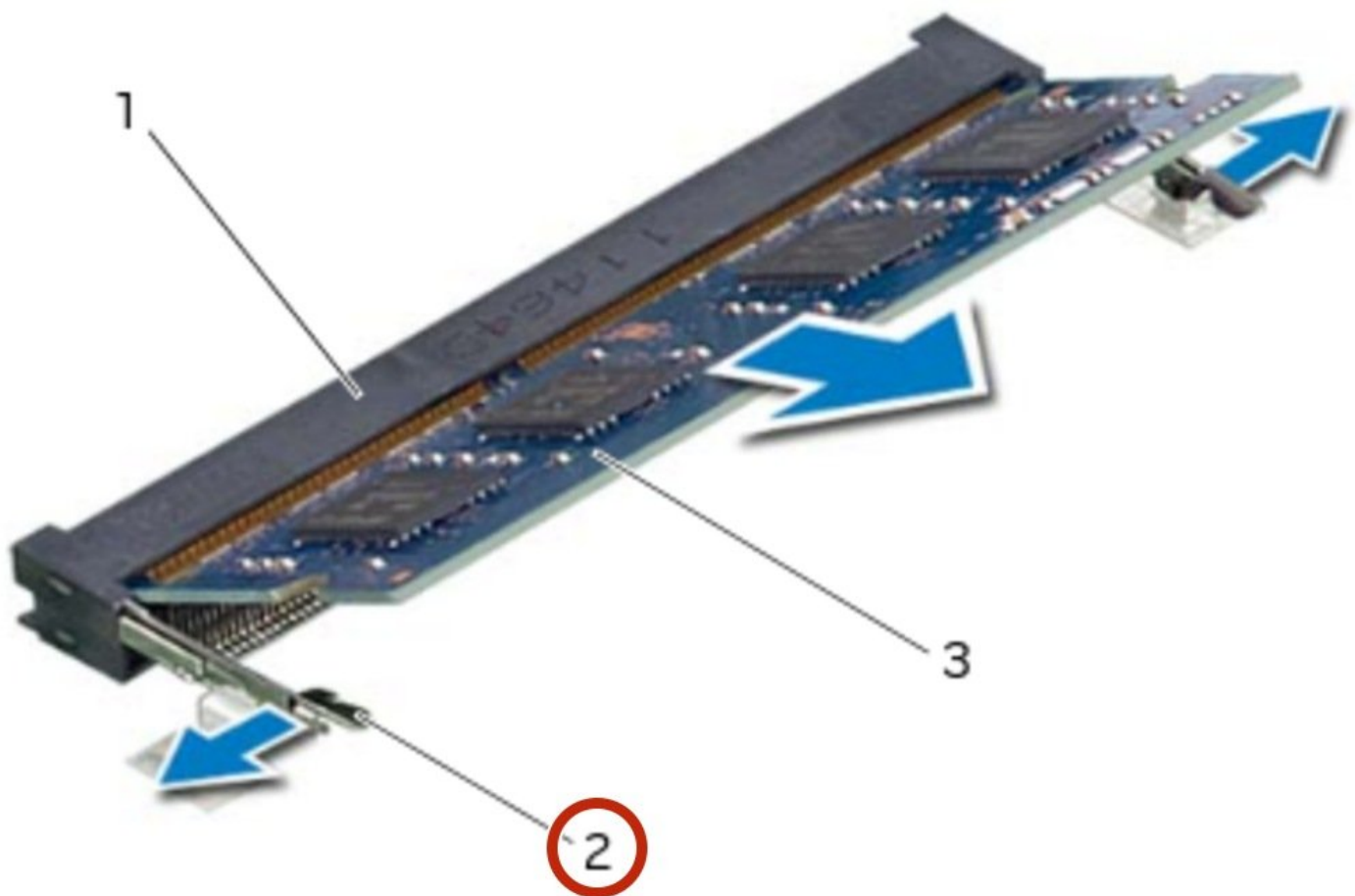




# Dell Alienware 14 Memory Module Replacement

Replace the memory module for the Dell Alienware 14.

Written By: Terrence15



---

# INTRODUCTION

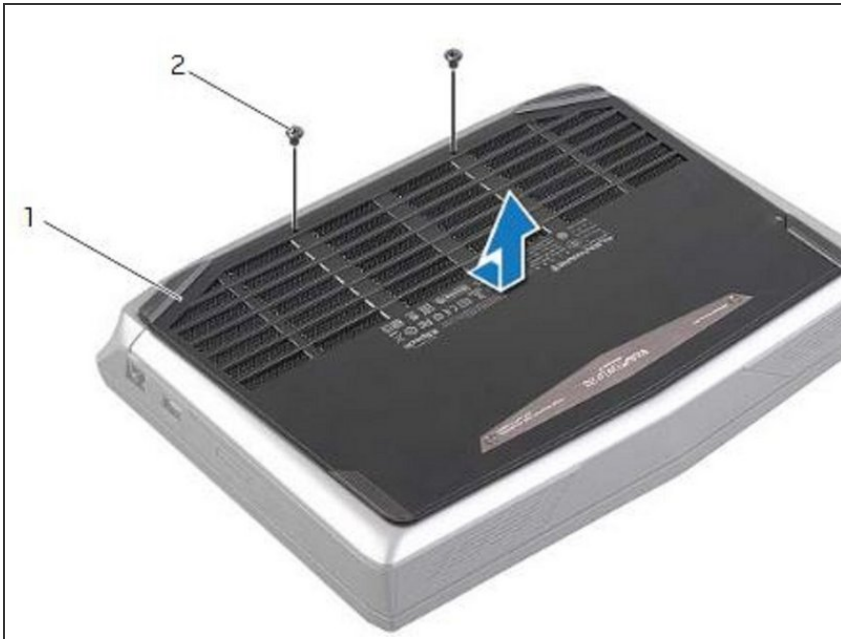
In this guide, we will be showing you how to remove and replace the memory modules.



## TOOLS:

- [Pro Tech Toolkit](#) (1)
-

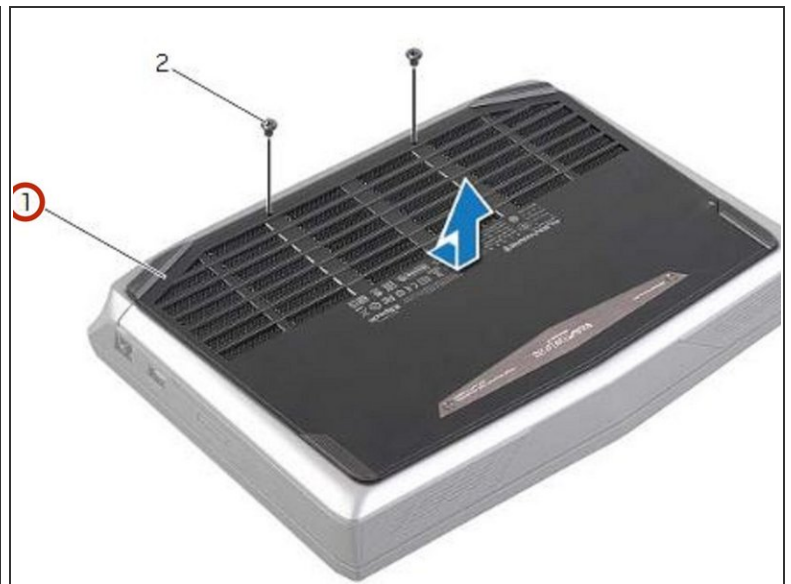
## Step 1 — Close the Display



**⚠ WARNING:** Before working inside your computer, read the safety information that shipped with your computer and follow the steps in [Before You Begin](#). After working inside your computer, follow the instructions in [After Working Inside Your Computer](#).

- Close the display, and turn the computer over.

## Step 2 — Remove the Screws



- Remove the screws that secure the base cover to the computer base.

### Step 3 — Slide and Lift the Base Cover



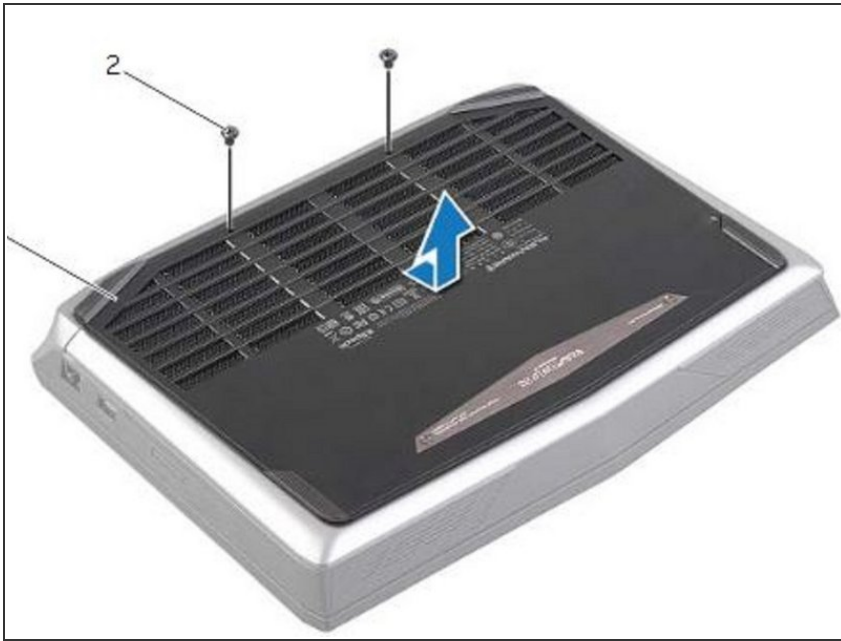
- Slide and lift the base cover off the computer base.

### Step 4 — Align the Tabs



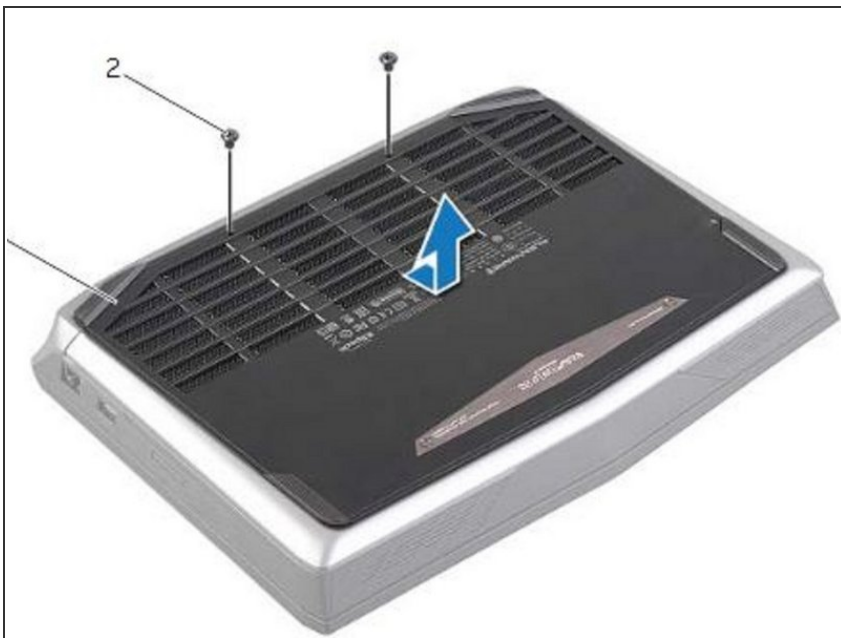
- Align the tabs on the **NEW** base cover with the slots on the computer base and slide the base cover into place.

## Step 5 — Replace the Screws



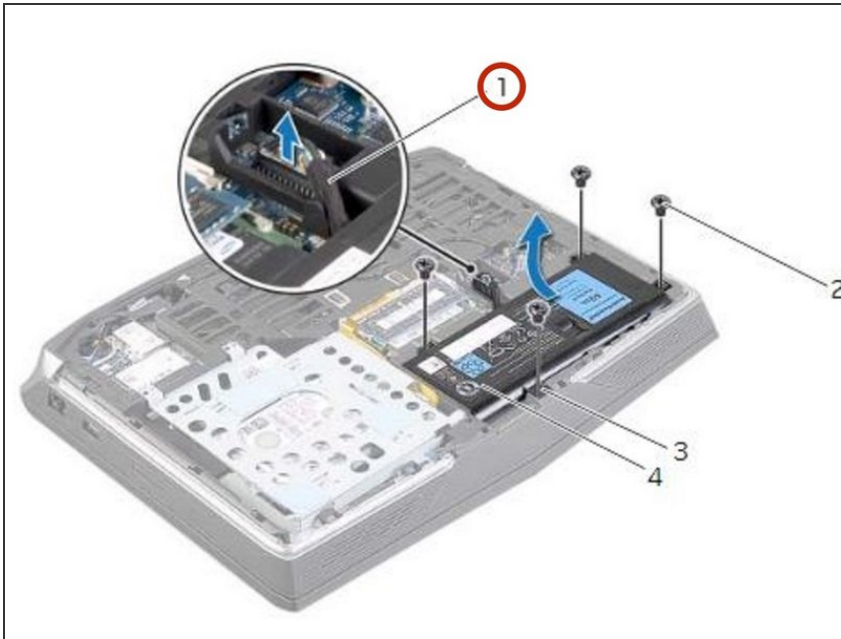
- Replace the screws that secure the base cover to the computer base.

## Step 6 — Turn the Computer Over



- Turn the computer over and open the display.

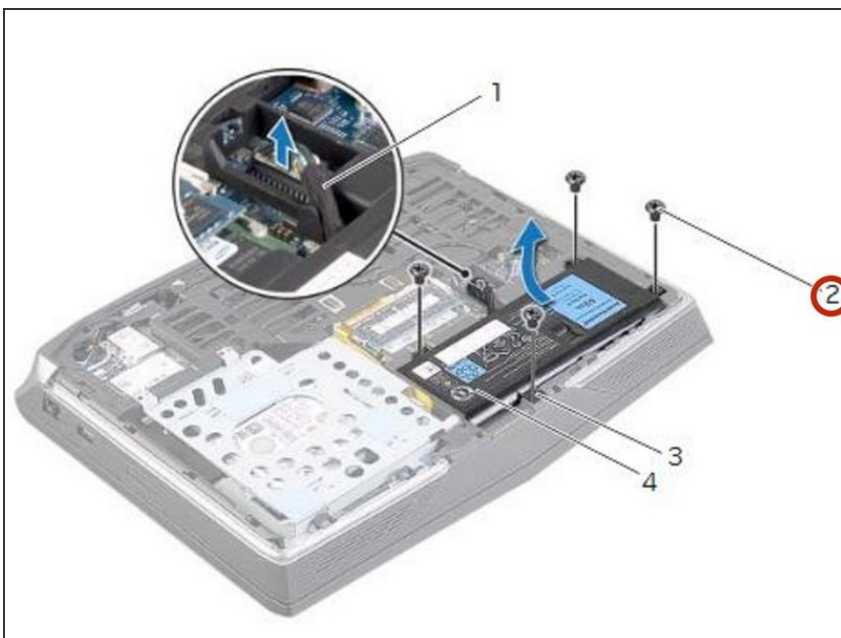
## Step 7 — Disconnecting the Battery Cable



**⚠ WARNING:** Before working inside your computer, read the safety information that shipped with your computer and follow the steps in [Before Working Inside Your Computer](#). After working inside your computer, follow the instructions in [After Working Inside Your Computer](#).

- Disconnect the battery cable from the system-board connector.

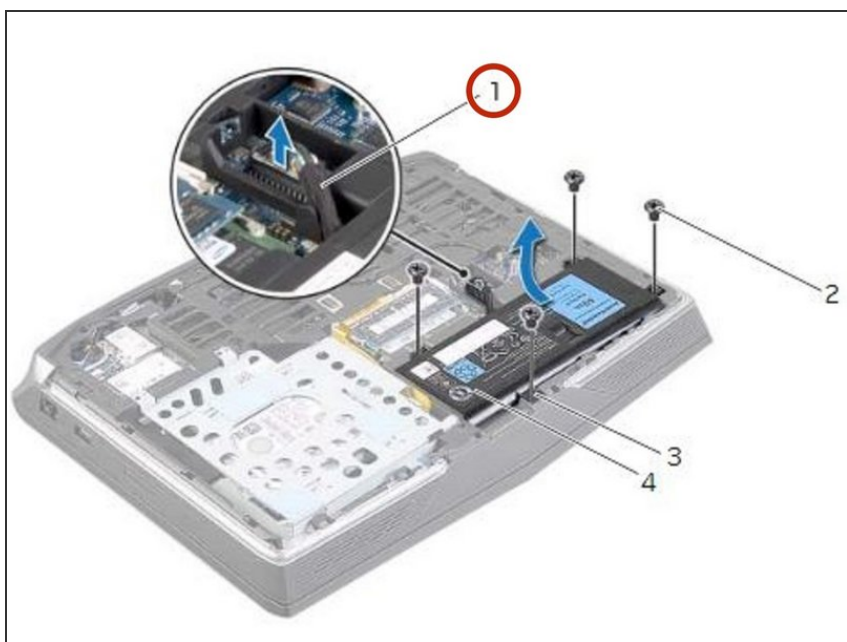
## Step 8 — Remove the Screws



- Remove the screws that secure the battery to the computer base.

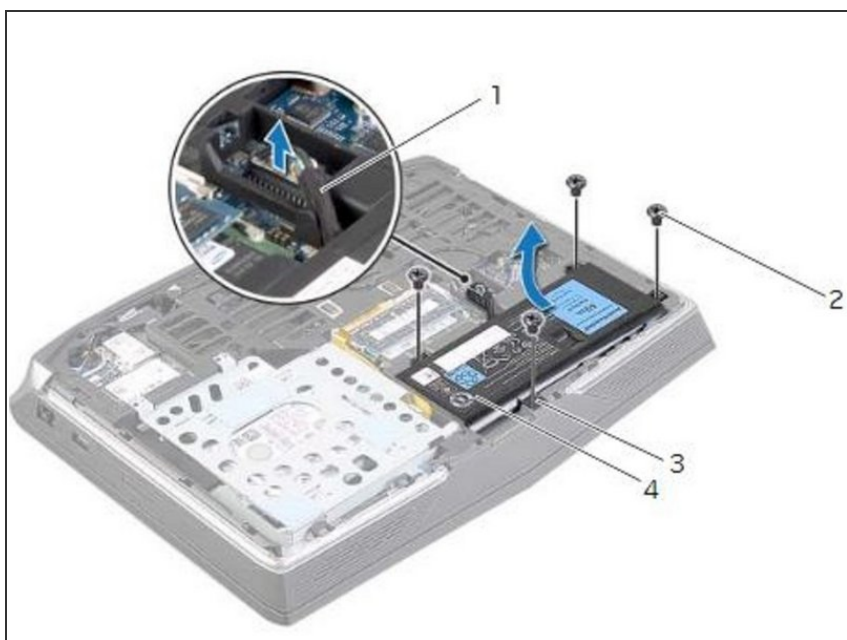


## Step 9 — Using the Battery Cable



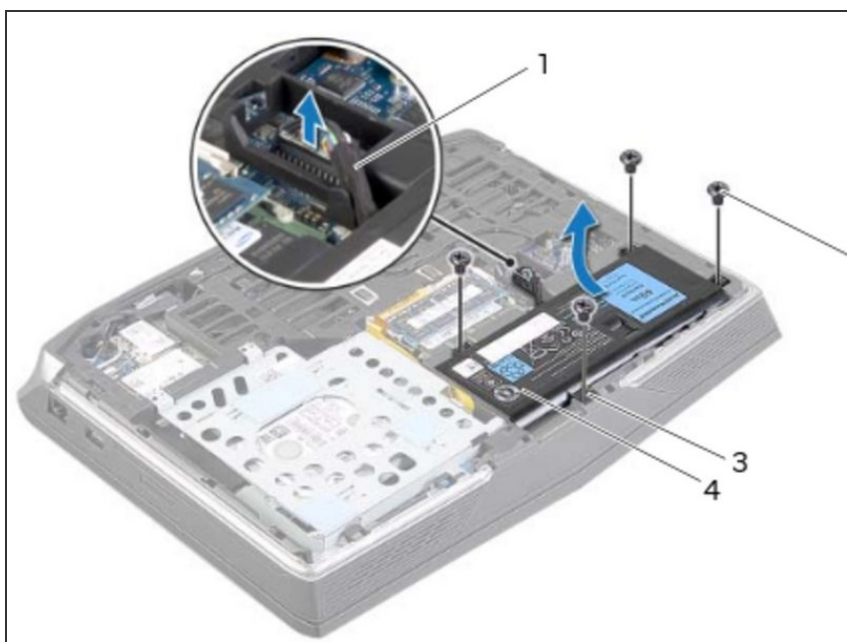
- Using the battery cable, lift the battery and release it from the tabs on the computer base.

## Step 10 — Turn the Computer Over



- Turn the computer over and open the display as far as possible.

## Step 11 — The Power Button



- Press and hold the power button for five seconds to ground the system board.

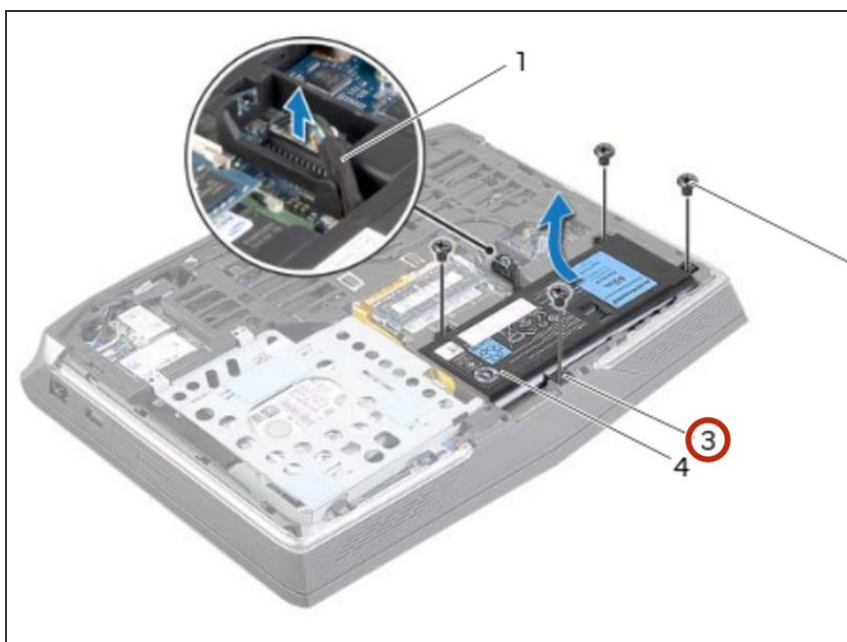
## Step 12 — Close the Display



- Close the display and turn the computer over.

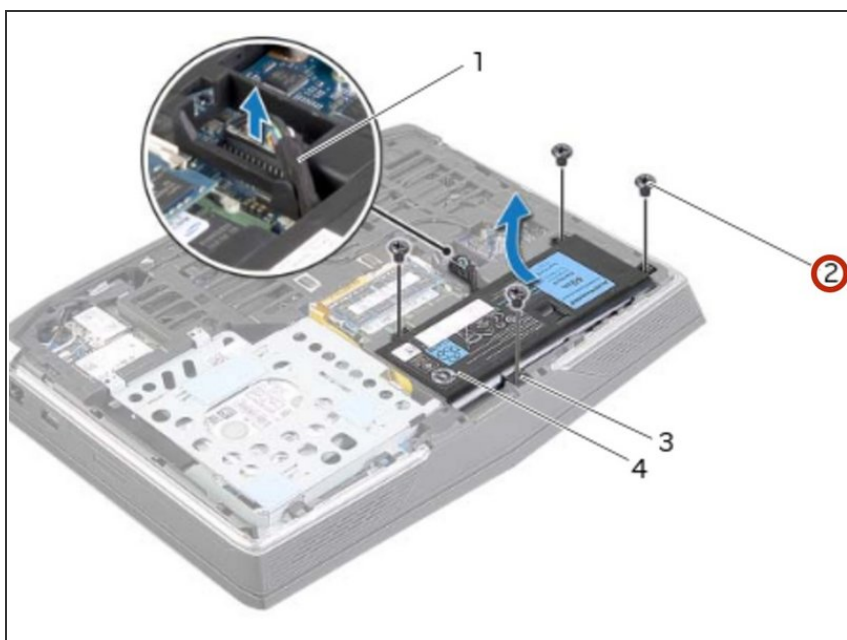


## Step 13 — Align the Tabs



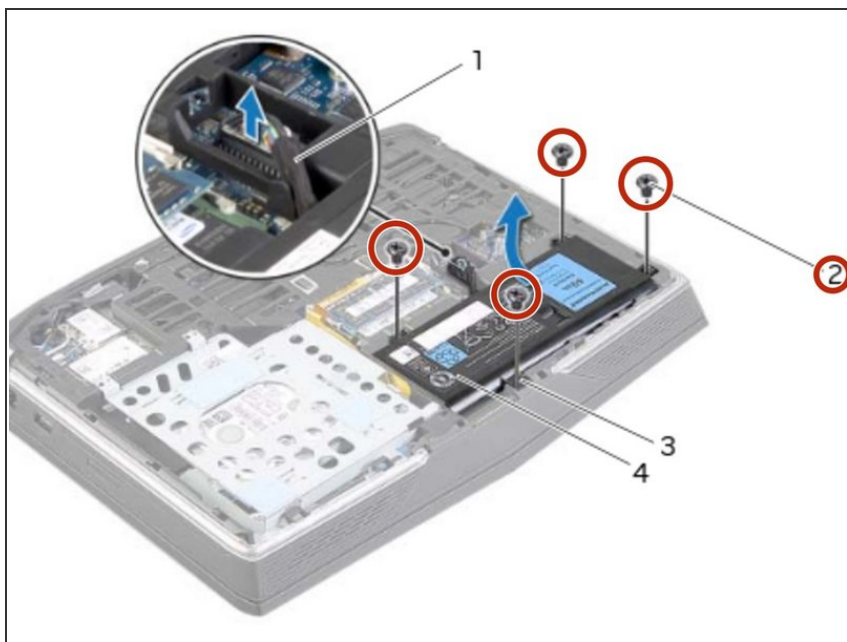
- Align the tabs on the **NEW** battery with the slots on the computer base.

## Step 14 — Align the Screw Holes



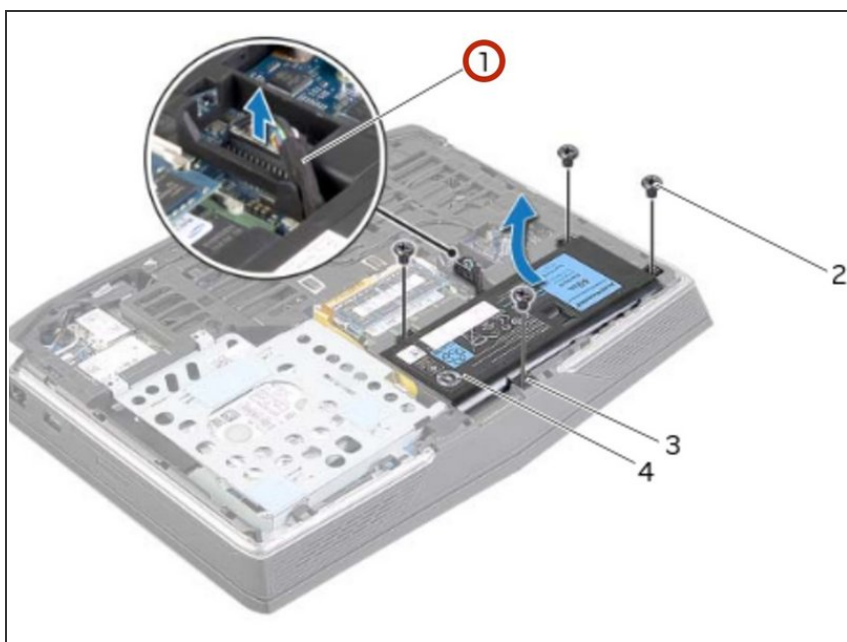
- Align the screw holes on the battery with the screw holes on the computer base.

## Step 15 — Replace the Screws



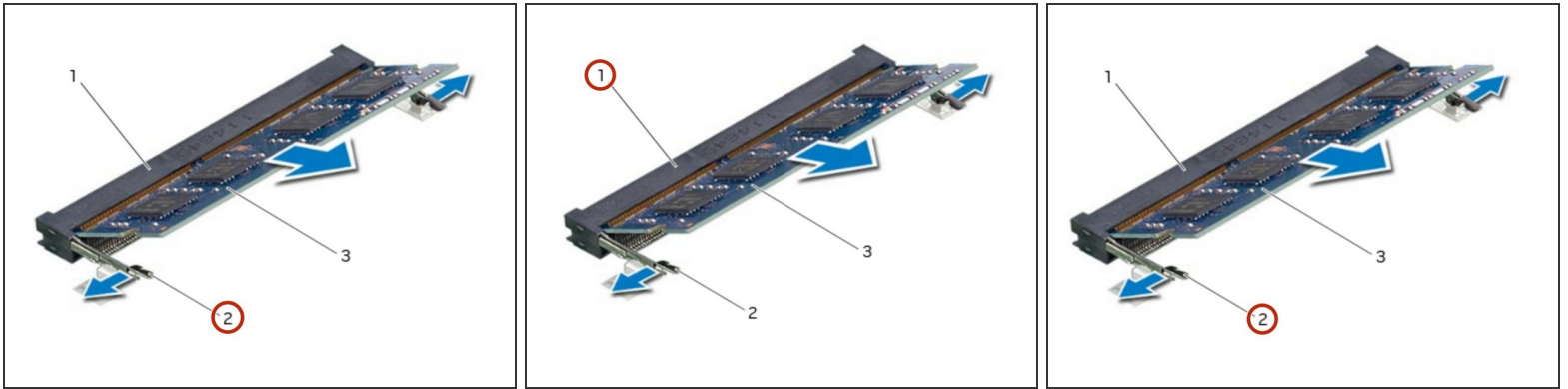
- Replace the screws that secure the battery to the computer base.

## Step 16 — Connect the Battery Cable



- Connect the battery cable to the system-board connector.

## Step 17 — Popping up the Memory Module

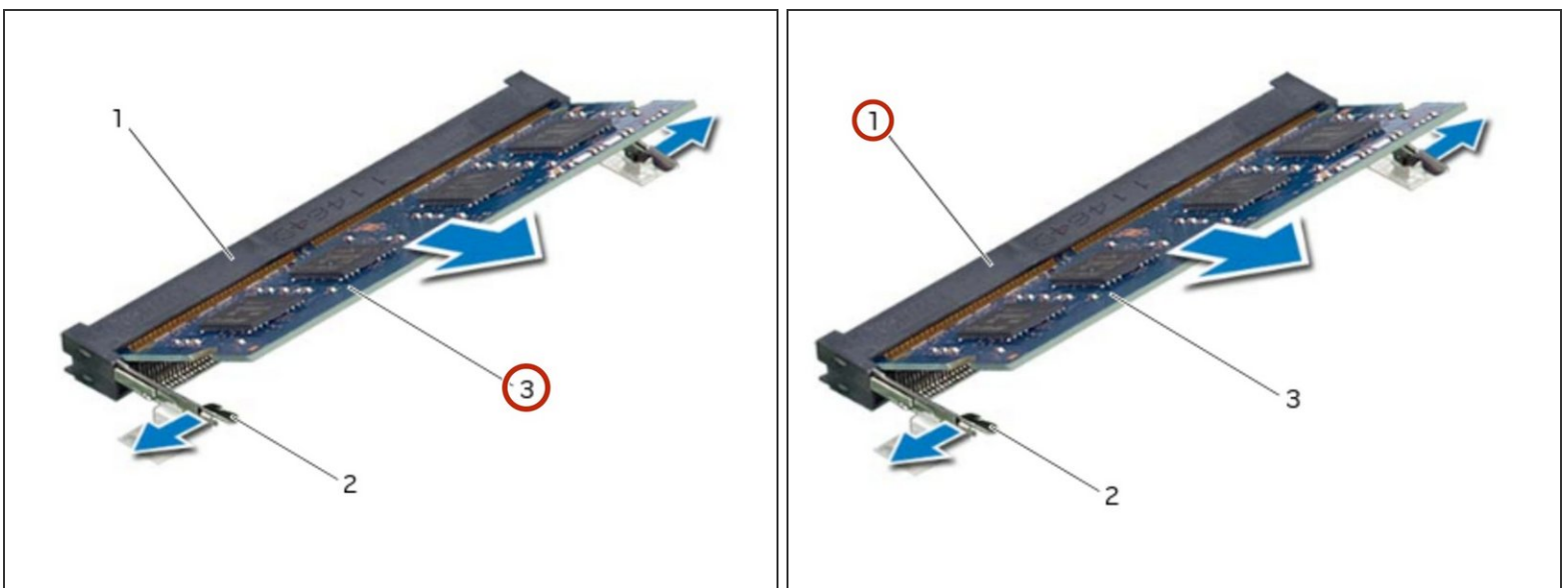


**⚠ WARNING:** Before working inside your computer, read the safety information that shipped with your computer and follow the steps in [Before Working Inside Your Computer](#). After working inside your computer, follow the instructions in [After Working Inside Your Computer](#).

**⚠ CAUTION:** To prevent damage to the memory-module connector, do not use tools to spread the memory-module securing clips.

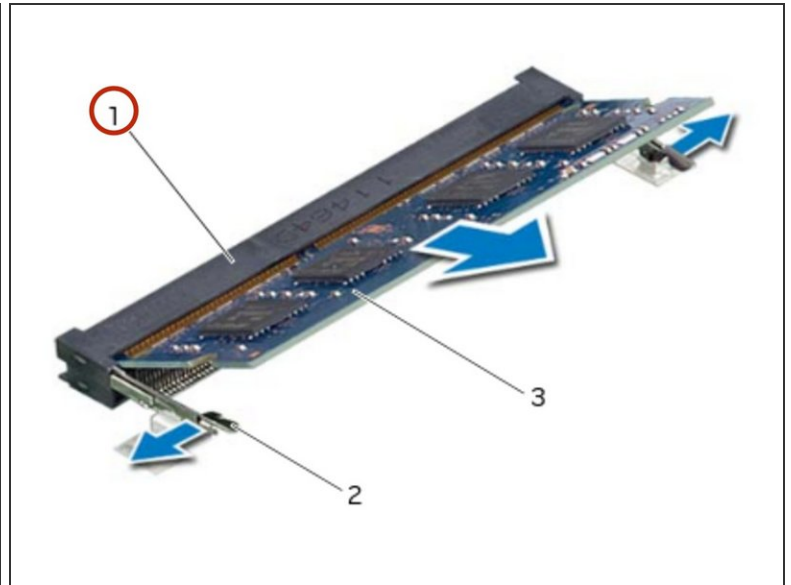
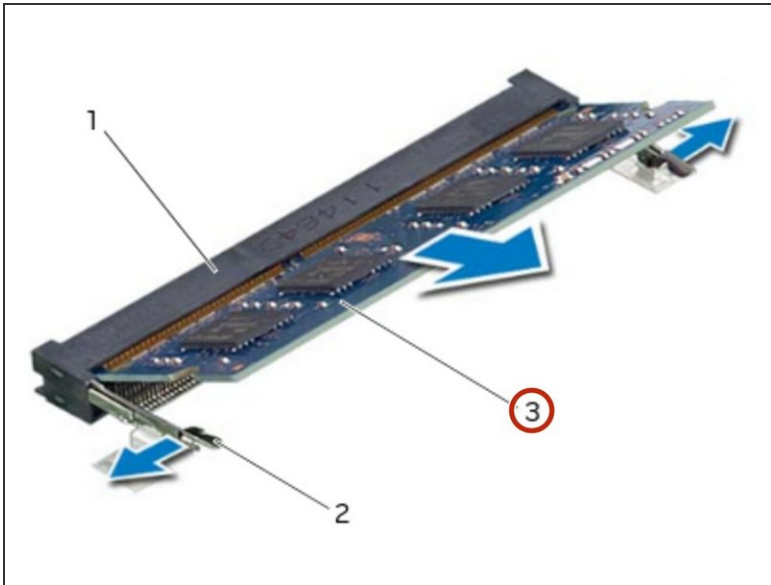
- Using your fingertips, carefully spread apart the securing clips on each end of the memory-module connector until the memory module pops up.

## Step 18 — Remove the Memory Module



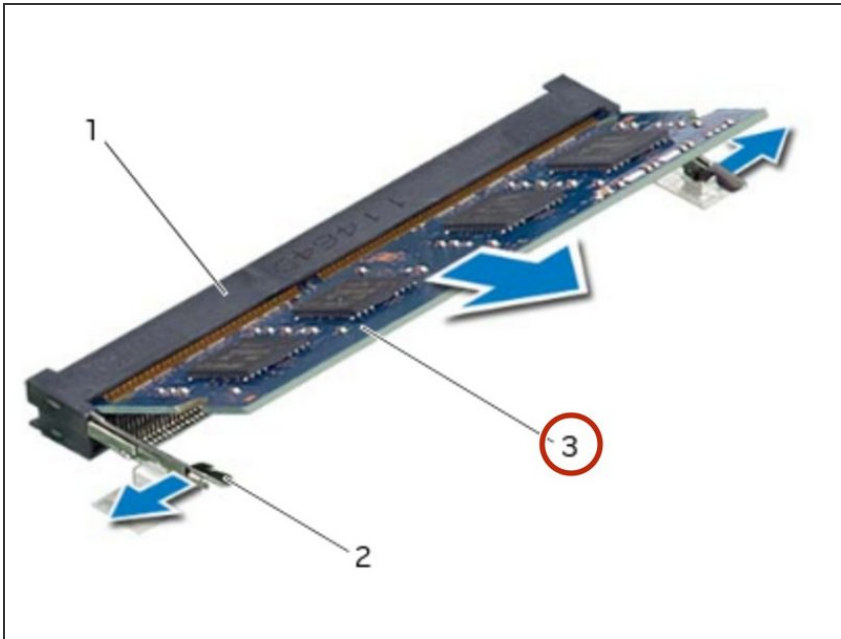
- Remove the memory module from the memory-module connector.

## Step 19 — Align the Notch



- Align the notch on the **NEW** memory module with the tab on the memory-module connector.

## Step 20 — Slide the Memory Module



- Slide the memory module firmly into the slot at a 45-degree angle, and press the memory module down until it clicks into place. If you do not hear the click, remove the memory module and reinstall it.

**NOTE:** If the memory module is not installed properly, the computer may not boot.

To reassemble your device, follow these instructions in reverse order.