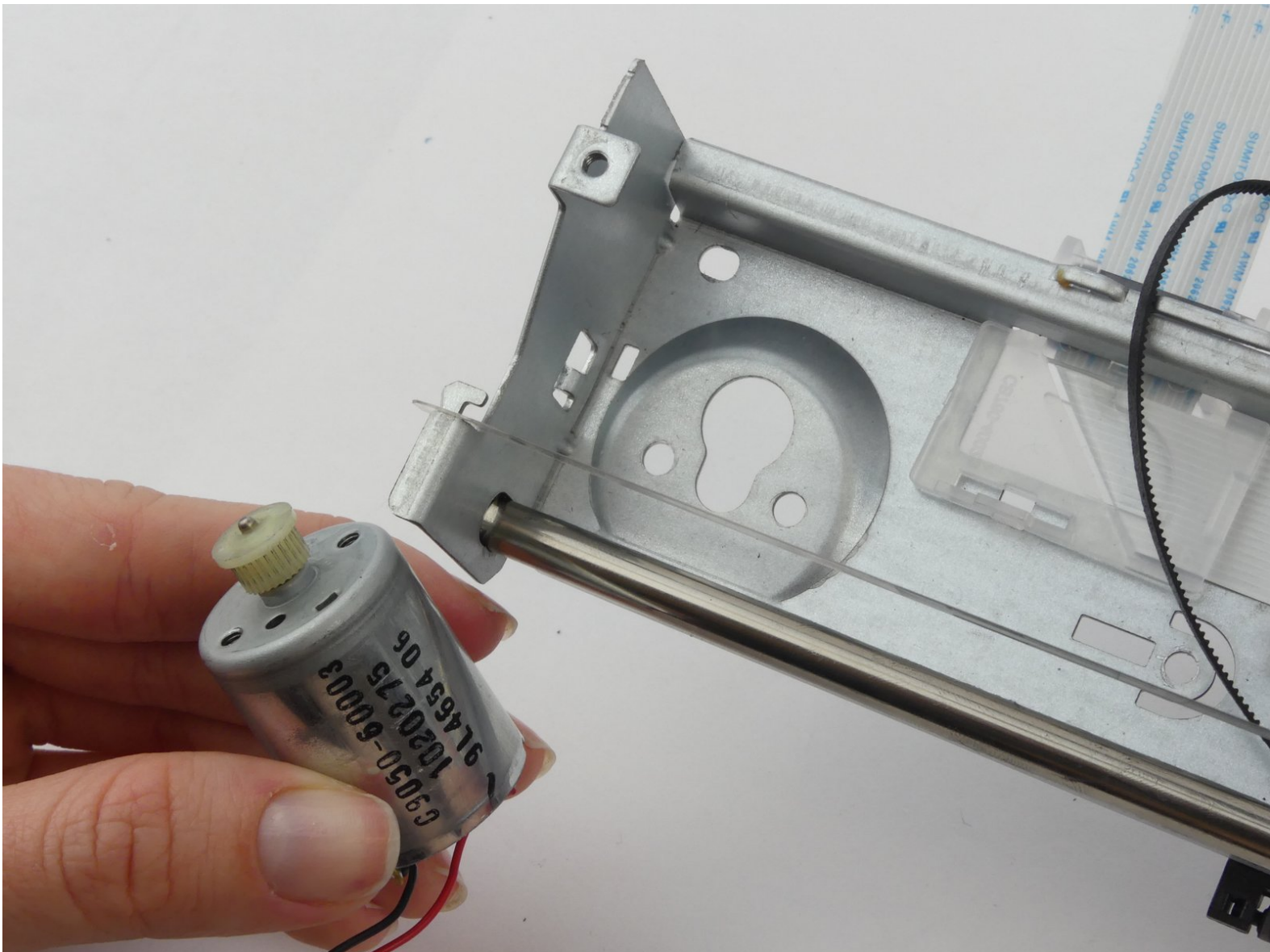




HP Deskjet 1000 J110a Ink Carriage Motor Replacement

The ink is not distributing evenly or is printing unacceptable documents. This guide will teach you how to replace your ink carriage motor.

Written By: Chris Perez



INTRODUCTION

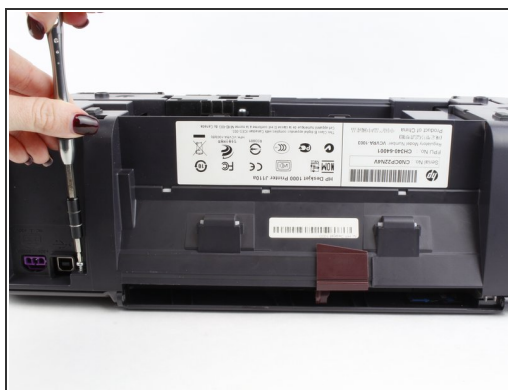
The ink carriage motor is responsible for moving the ink cartridge around for it to disperse ink. Follow these steps carefully and it should be an easy fix.



TOOLS:

- [T10 Torx Screwdriver](#) (1)
 - [Tweezers](#) (1)
-

Step 1 — Cover Removal



- Remove the two 13 mm screws located on the back of the printer using a screwdriver with the T10 torx bit (star-shaped).

Step 2



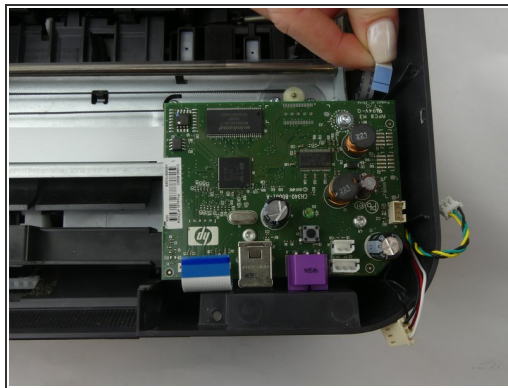
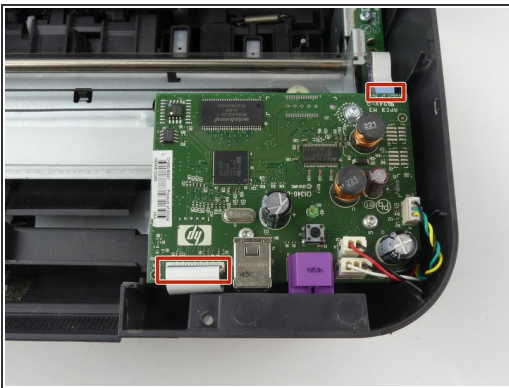
- In the front of the printer, open the tray where the paper comes out and remove the two 13 mm screws located under the top of the printer.

Step 3



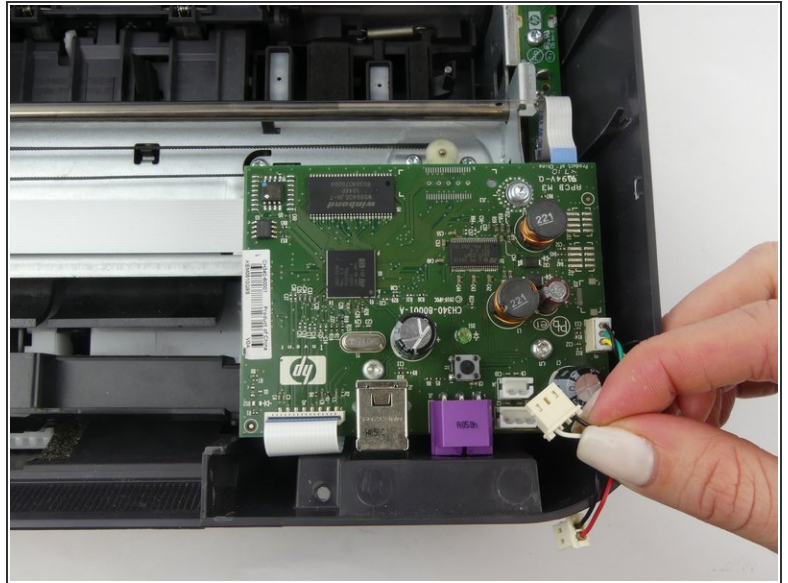
- With the front of the printer facing you, lift and raise the left side of the panel (like opening a book in reverse) until it disconnects from the clip on the right side of the panel.

Step 4 — Plug Ports



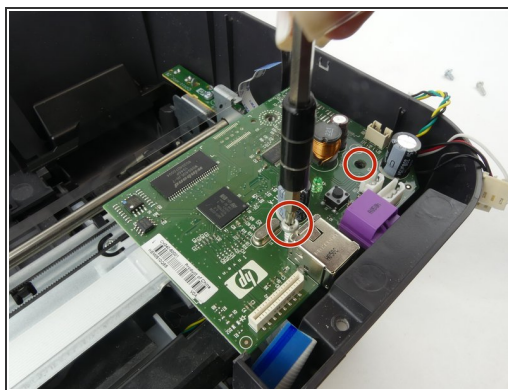
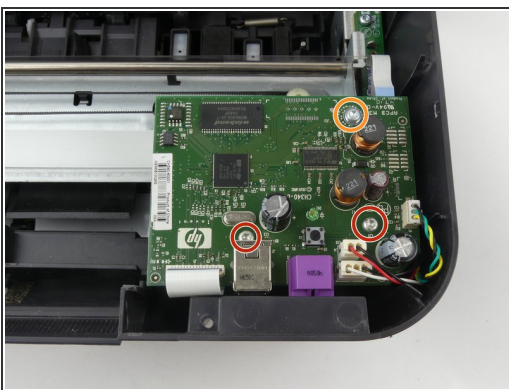
- Locate and remove the two flat ribbon connectors which connect the circuit board to the other printer components.
- ❗ Remove each connector using tweezers if it is too difficult to remove them by hand.

Step 5



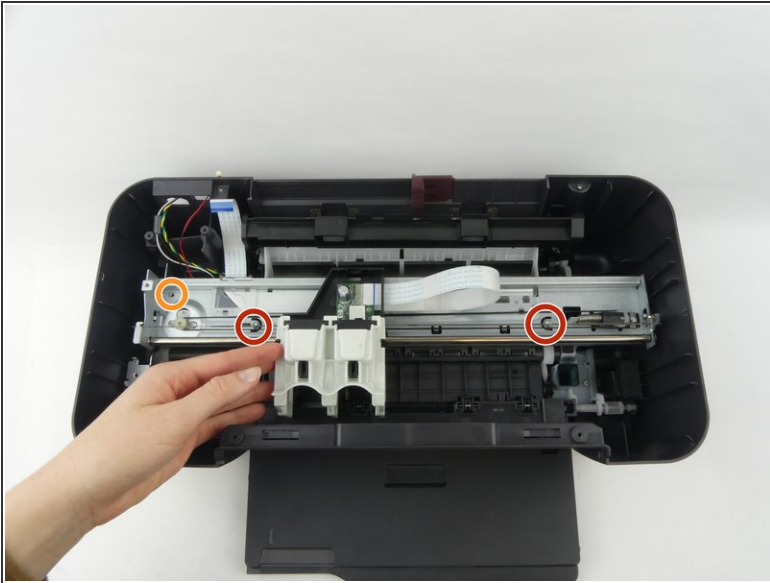
- Locate and remove the three multicolored wire connectors which connect the circuit board to the other printer components.
- ⓘ Remove each connector by hand, as shown. You can use tweezers if it is too difficult to remove them by hand.

Step 6



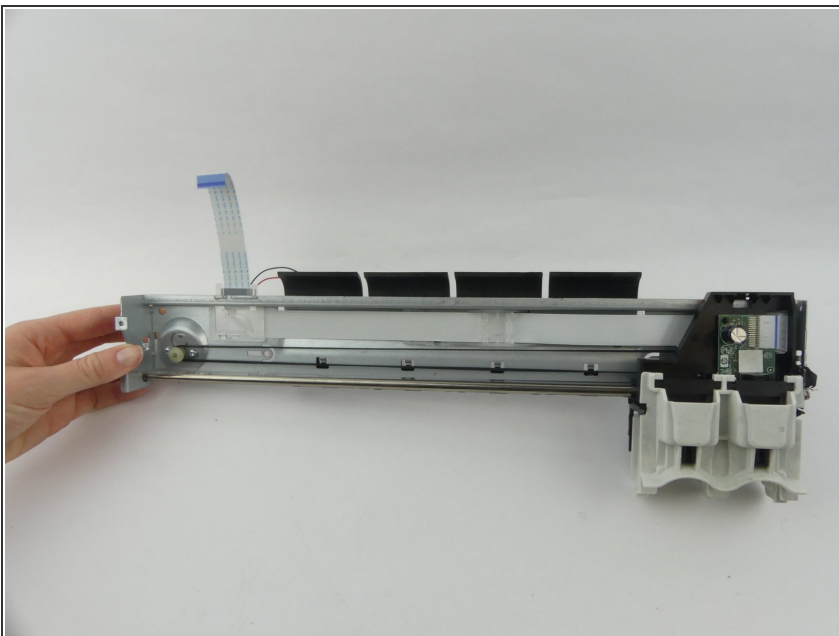
- Remove the top two 13mm screws using a screwdriver with the T10 torx bit.
- Remove the bottom 9mm screw using a screwdriver with the T10 torx bit, and remove the plug port circuit board.

Step 7 — Ink Carriage Motor



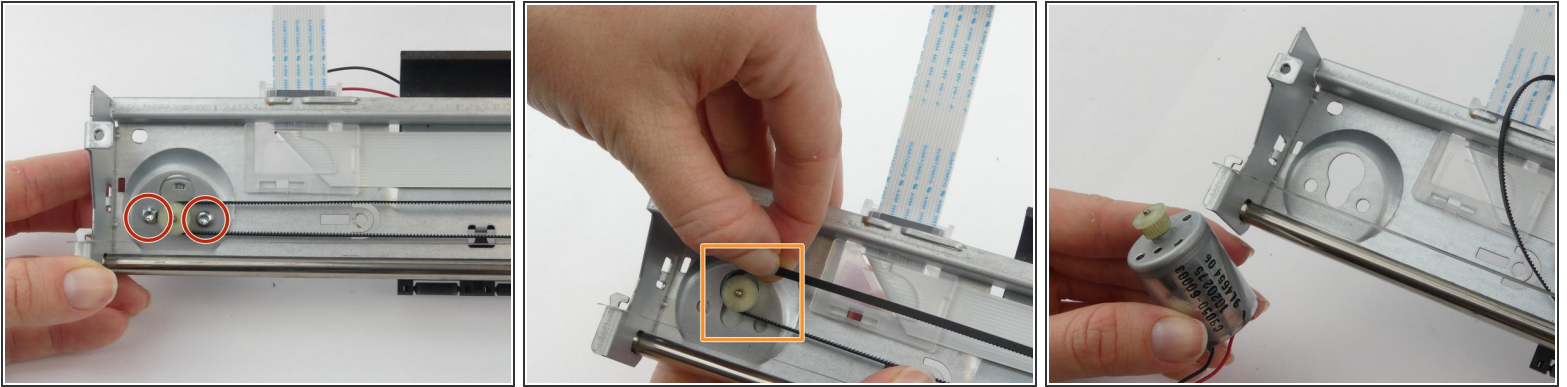
- Remove the two 13mm screws with the screwdriver and a T10 torx bit.
- ⓘ Slide the ink dispenser to the center in order to reach the screws.
- Remove the one 9mm screw with the screwdriver and a T10 torx bit.

Step 8



- Lift the entire ink dispenser assembly out of the printer.
- ⓘ Ignore the following step if you are replacing the paper roller motor instead of the ink carriage motor.

Step 9



- Remove the two 5mm screws which hold motor in place.
- Remove the belt from the round motor gear, then remove the ink carriage motor.
 - ⚠ Be careful not to allow pulley on right side of belt to fall out and become lost. It will remain in place if the assembly is handled gently.
- ⓘ Ignore these instructions if you are replacing the paper roller motor instead of the ink carriage motor.

To reassemble your device, follow these instructions in reverse order.