



How to disassemble a Bodum water kettle model no. 11138

This is a disassembly guide for the Bodum Water kettle, 1.5L model no. 11138.

Geschreven door: Marieke Pieters



INTRODUCTIE

The disassembly of this water kettle can be done by anyone with the help of this manual and the required tools. At one point, you might need an extra pair of hands, so make sure that someone is available when needed.



GEREEDSCHAPPEN:

- [Phillips Head Screwdriver: Size PH1](#) (1)
 - [Philips Head Screwdriver PH2](#) (1)
 - [Spanner 2.6 Screwdriver](#) (1)
 - [Philips head PH 1.8](#) (1)
 - [Flush Wire Cutters](#) (1)
 - [Levering tool](#) (1)
-

Stap 1 — How to disassemble a Bodum water kettle model no. 11138



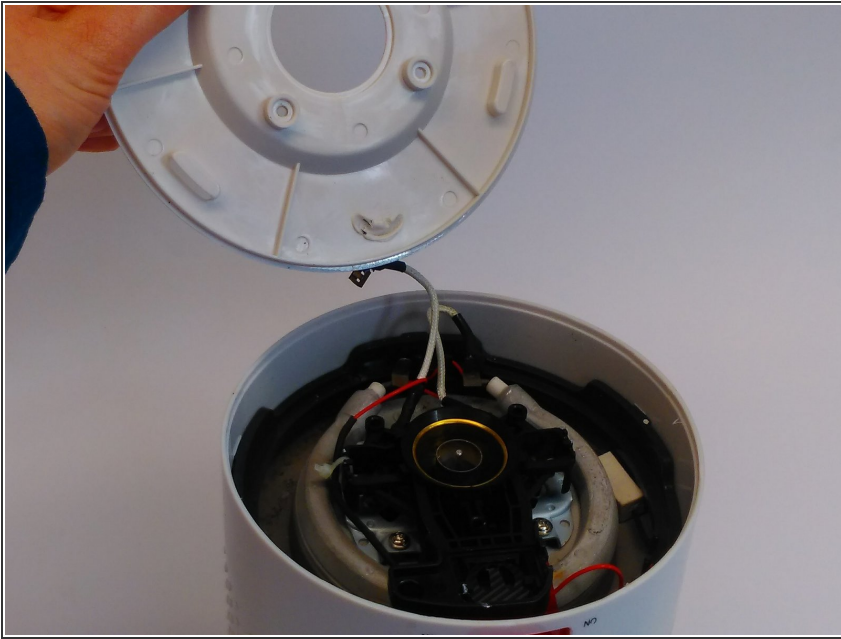
- This is the Bodum Bistro Water kettle, with a capacity of 1.5 L . We are going to disassemble this.

Stap 2



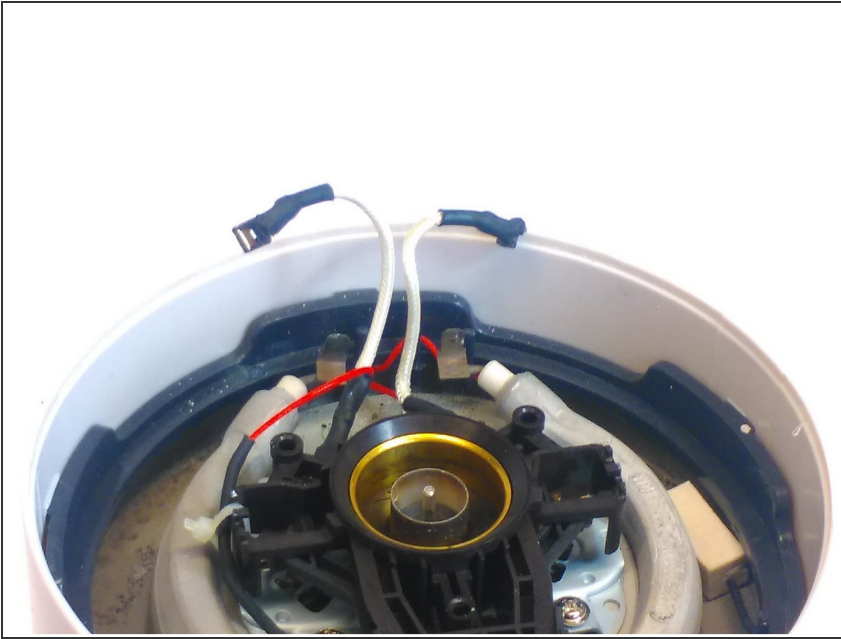
- We start off with unscrewing the three screws from the bottom of the water kettle. Two of the three screws can be unscrewed with a Philips Ph 1.8 screwdriver. The other screw can be unscrewed with a spanner screwdriver.

Stap 3



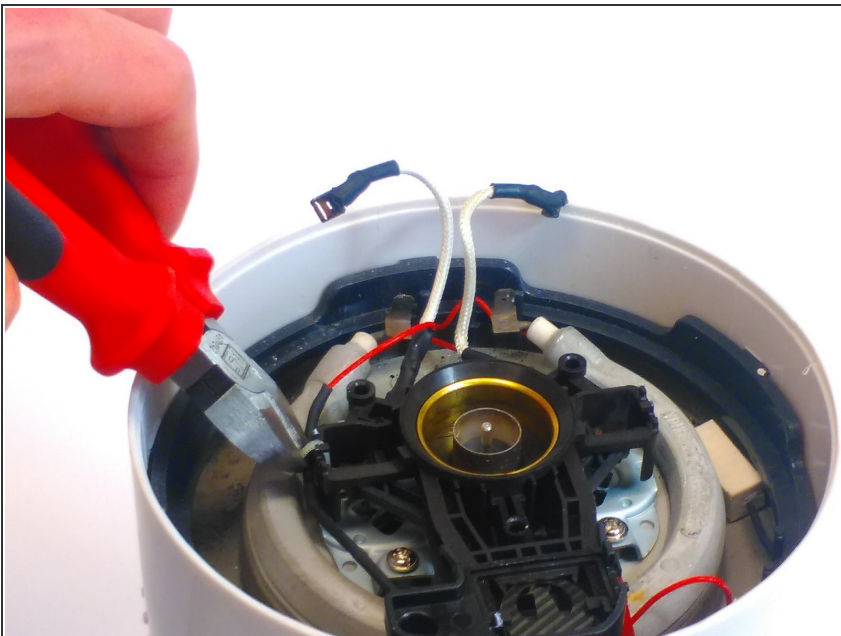
- After unscrewing the screws, you can detach the bottom of the water kettle.

Stap 4



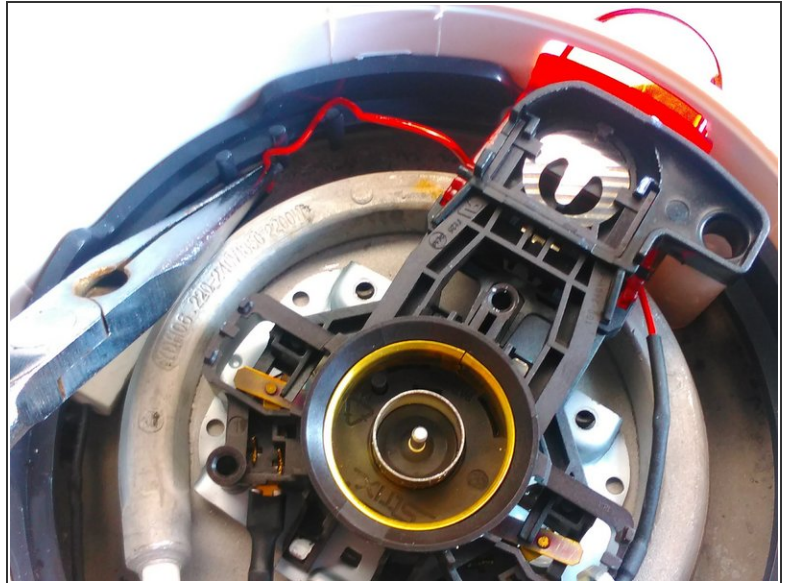
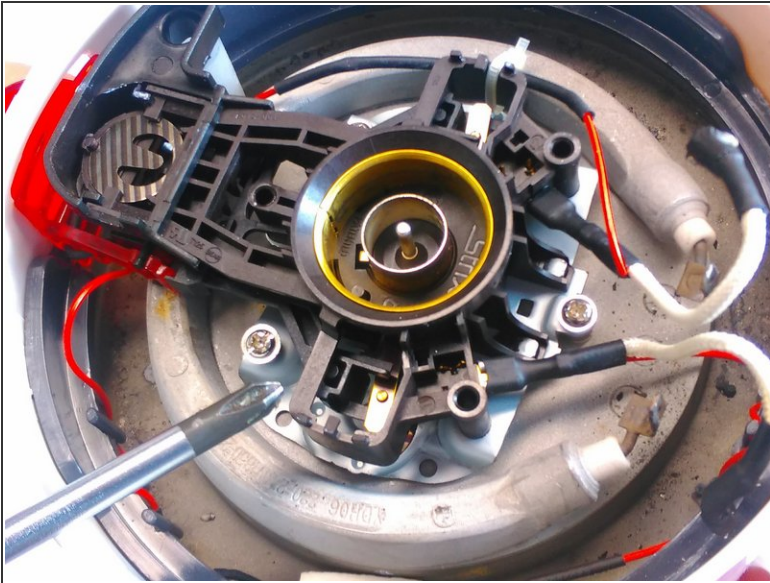
- After opening the bottom , you see two white wires with black taped ends connected to a metal base. These two wires can be disconnected by pulling them away from the metal.

Stap 5



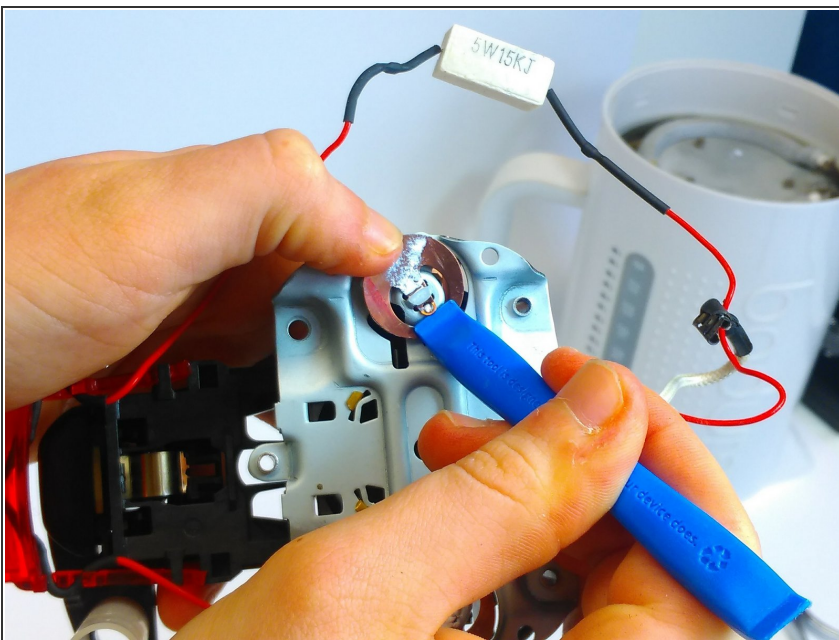
- The next step is to cut the small zip tie , this can be done easily with a wire cutter.

Stap 6



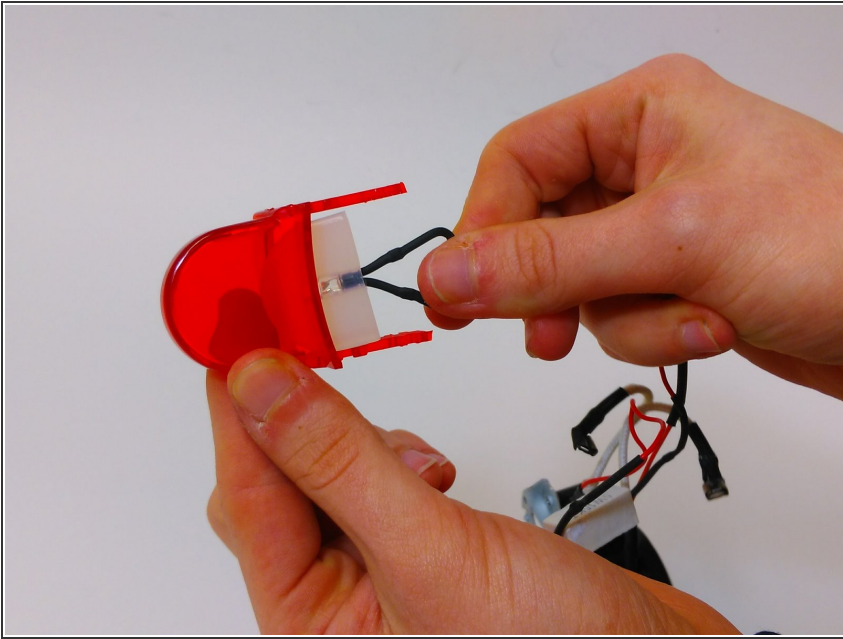
- After this, locate the three, already visible screws and unscrew two of the three screws with a PH2 and the other one with a PH 1 screwdriver.
- Next, you can detach the black plastic part with the switch after loosening the red wires from the plastic. With this, you can remove the plastic tube as well.

Stap 7



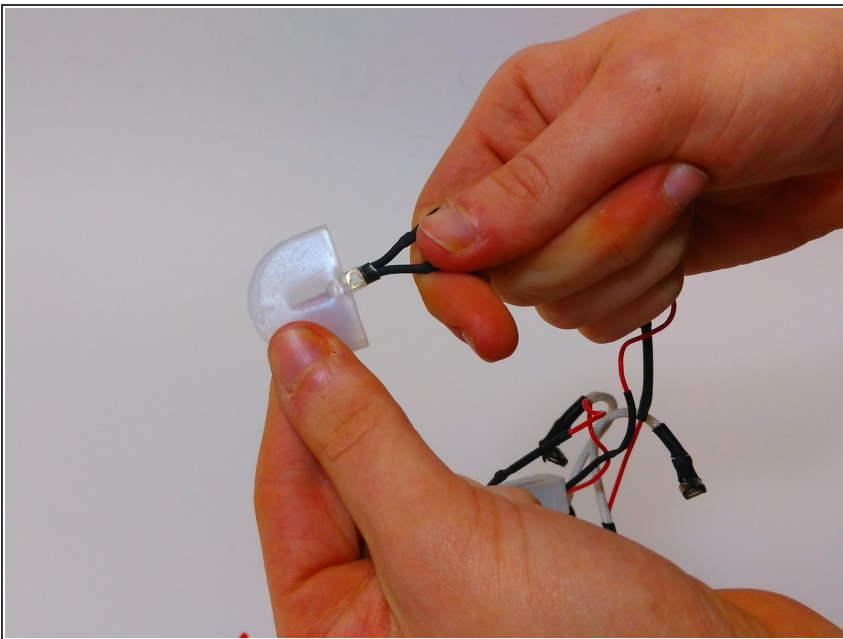
- To continue, we focus on the black plastic parts that we just removed from the water kettle. On this are two metal rings located, these can be slipped out with the help of a levering tool. With the two rings, two little grey pins will come out.

Stap 8



- Next, you can remove the red casing from the light. This might take some power, so hold on to the light so you don't break the wire.

Stap 9



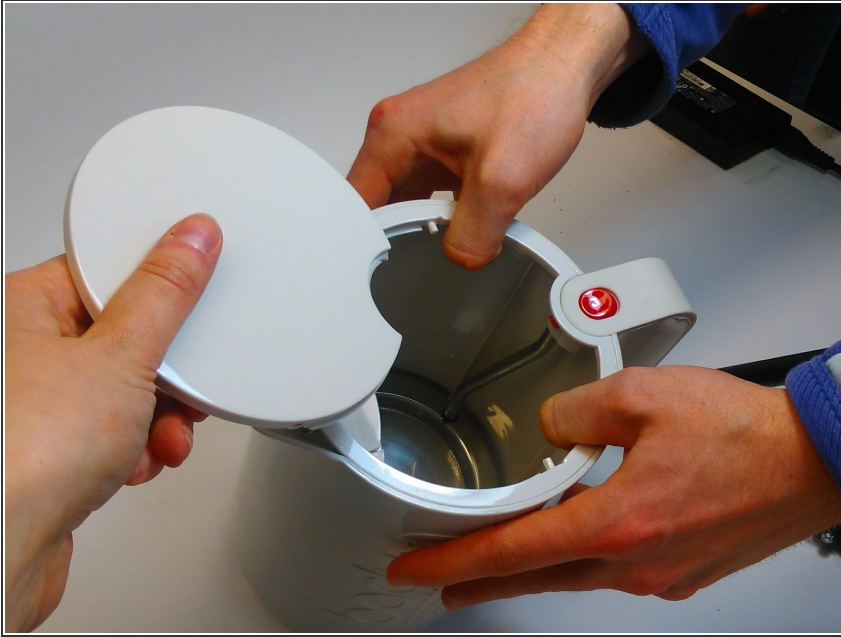
- After removing the casing, you can remove the rubber filling in the same careful way. You now have access to the LED.

Stap 10



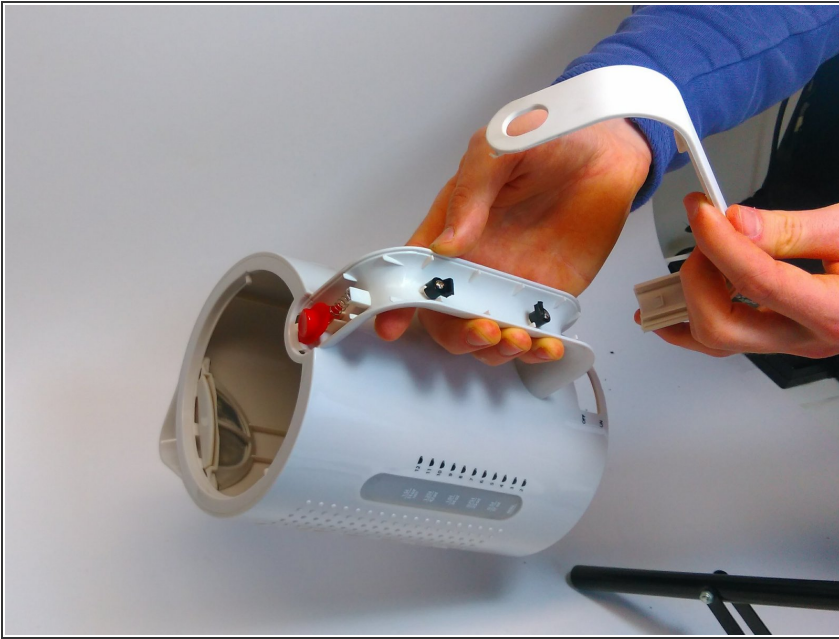
- Here we end this part of the disassembly and go back to the main base of the kettle. From the bottom of the kettle, you see a black plastic ring. This can be removed by undoing the snap fits. This can be done easily by hand.

Stap 11



- After removing the ring, flip the kettle and remove the lid by pulling the kettle a little bit to transform the circle,. You might need another pair of hands for this step.

Stap 12



- After this, you can remove the grip by sliding the snap fingers at the top, located at the switch, out. This can easily be done by holding the grip with your hand, and sliding the grip with your thumb.

Stap 13



- The screws with the black plastic that became visible with the removal of the grip can be unscrewed with a PH1 screwdriver.

Stap 14



- Then, you can remove the switch by just picking it up from the kettle. When it is not coming off easily, you might need to transform the spring a bit.

Stap 15



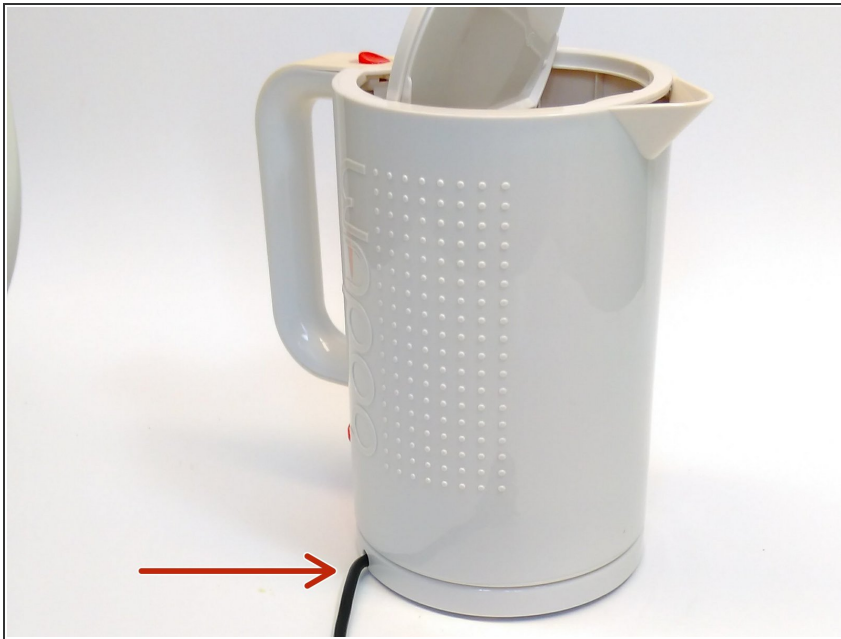
- Subsequently, you can remove the white ring with the filter from the top of the kettle. You can do this by pulling the half round plastic white circle on the opposite side of the filter. (see image for location)

Stap 16



- After removing the ring, you can remove the filter and its housing from the ring with a PH 1 screwdriver.
- With this, you can remove the filter from its housing by sliding it out.

Stap 17



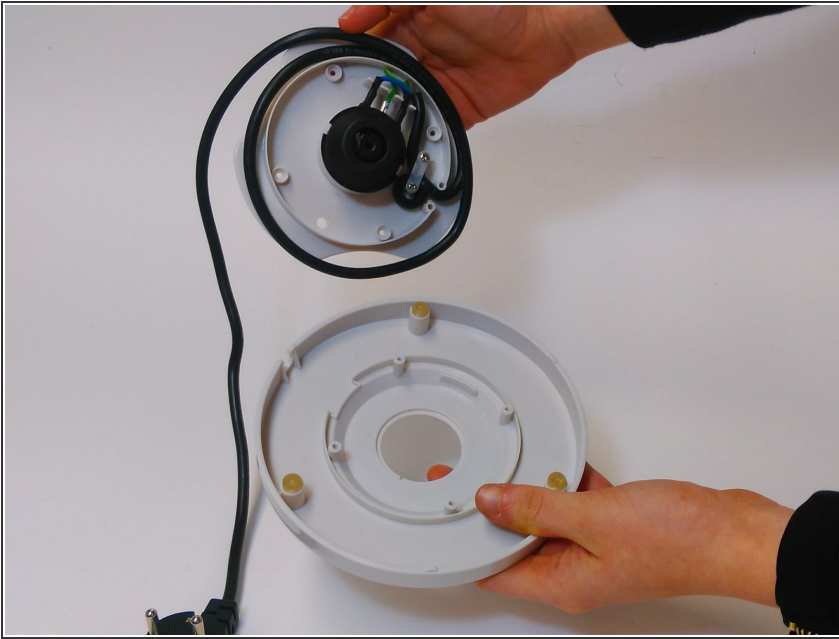
- We are now finished with the kettle!
We move on with the kettle base,.

Stap 18



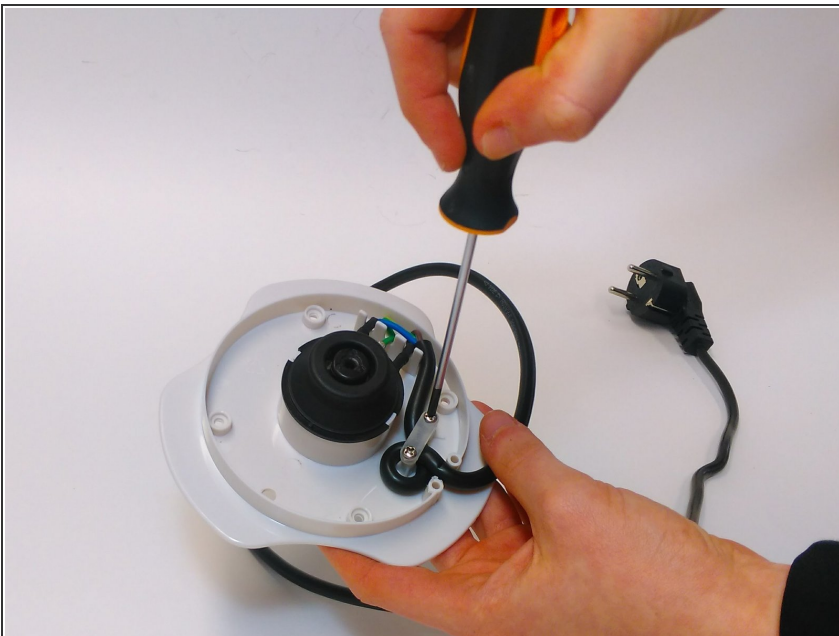
- The base can be disassembled by unscrewing the four screws with a PH1 for three of them, and slightly less high PH1 with the other one.

Stap 19



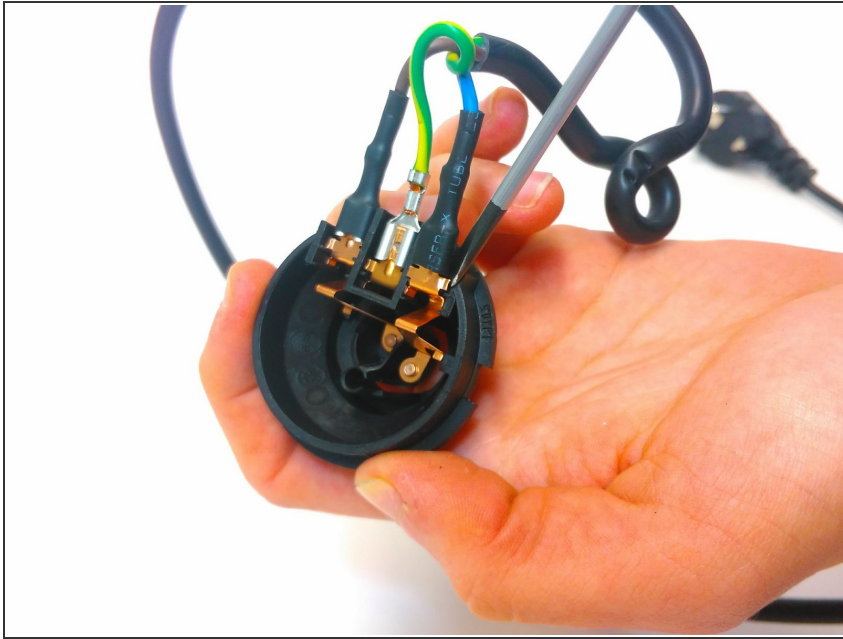
- You can now remove the two parts to unveil the electronic part in the base.

Stap 20



- You can remove the electronic part by unscrewing the two screws with a PH1 screwdriver.

Stap 21



- After this, the electronic part can be removed and the wires can be disassembled from the plastic with the use of a flat screwdriver.
- You are now finished. Well done!

Om het apparaat weer te monteren, volg je deze instructies in omgekeerde volgorde.