



HP Deskjet 1000 J110a Plug Ports Replacement

How to replace the plug ports, or the main circuit board, to an HP Deskjet 1000 printer.

Written By: Chris Perez



INTRODUCTION

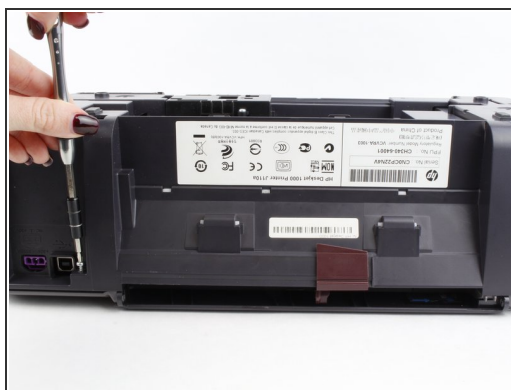
The plug ports are soldered onto the circuit board, so this is more of a circuit board replacement. Be careful when handling electronic circuit boards to avoid damaging the components and to avoid electric shock.



TOOLS:

- [T10 Torx Screwdriver](#) (1)
 - [Tweezers](#) (1)
-

Step 1 — Cover Removal



- Remove the two 13 mm screws located on the back of the printer using a screwdriver with the T10 torx bit (star-shaped).

Step 2



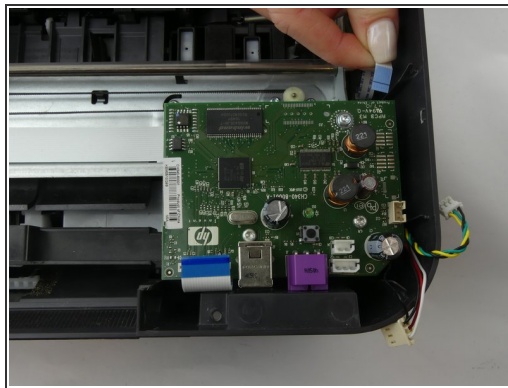
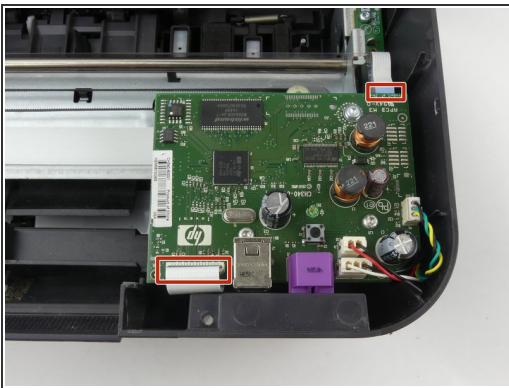
- In the front of the printer, open the tray where the paper comes out and remove the two 13 mm screws located under the top of the printer.

Step 3



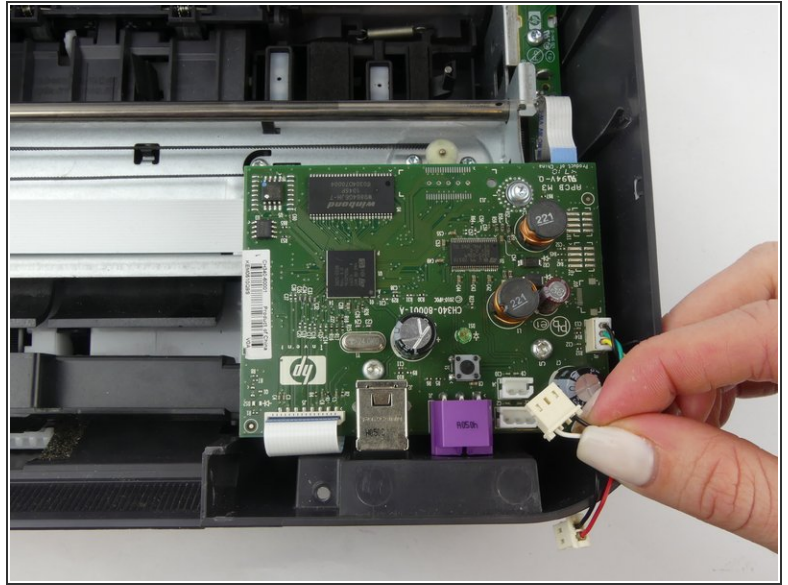
- With the front of the printer facing you, lift and raise the left side of the panel (like opening a book in reverse) until it disconnects from the clip on the right side of the panel.

Step 4 — Plug Ports



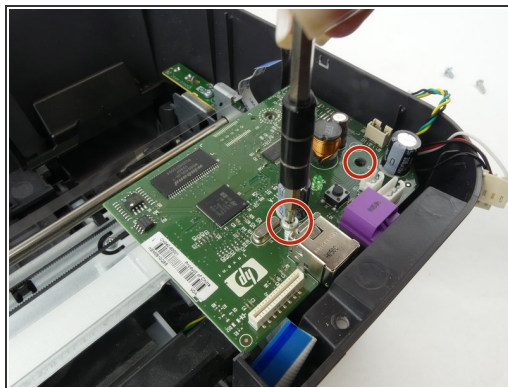
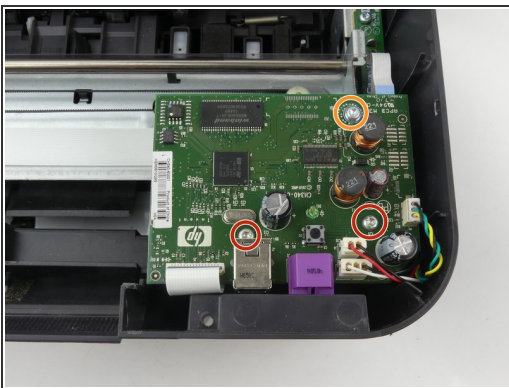
- Locate and remove the two flat ribbon connectors which connect the circuit board to the other printer components.
- ❗ Remove each connector using tweezers if it is too difficult to remove them by hand.

Step 5



- Locate and remove the three multicolored wire connectors which connect the circuit board to the other printer components.
- ⓘ Remove each connector by hand, as shown. You can use tweezers if it is too difficult to remove them by hand.

Step 6



- Remove the top two 13mm screws using a screwdriver with the T10 torx bit.
- Remove the bottom 9mm screw using a screwdriver with the T10 torx bit, and remove the plug port circuit board.

To reassemble your device, follow these instructions in reverse order.