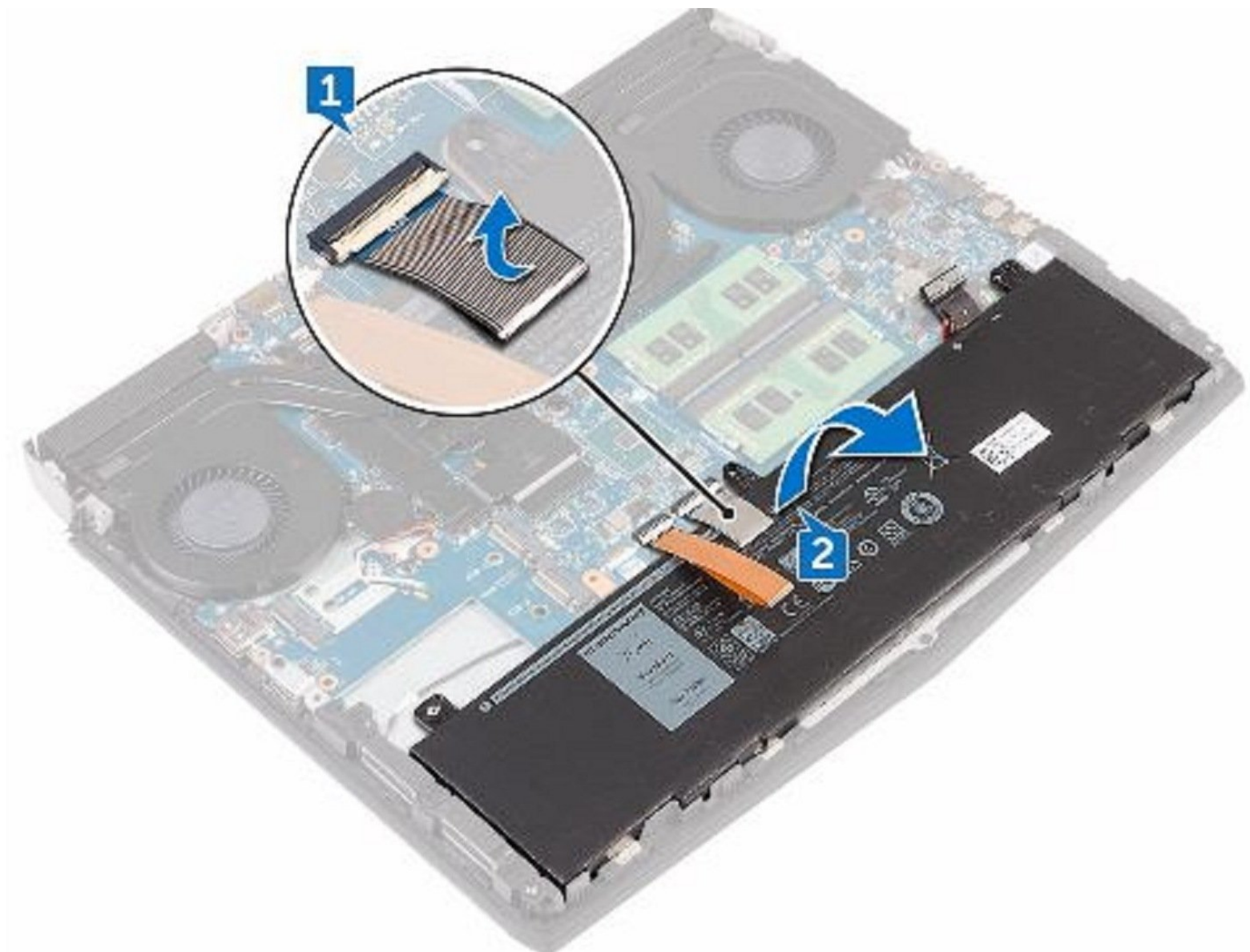




Dell Alienware 13 R3 Battery Replacement

In this guide, we will show you how to remove...

Written By: Terrence15



INTRODUCTION

In this guide, we will show you how to remove and replace the Battery.



TOOLS:

- [Pro Tech Toolkit](#) (1)



PARTS:

- [Dell AlienWare 13 R3 Laptop Battery](#) (1)

Step 1 — Loosen the Screws



⚠ WARNING: Before working inside your computer, read the safety information that shipped with your computer and follow the steps in [Before Working Inside Your Computer](#). After working inside your computer, follow the instructions in [After Working Inside Your Computer](#).

- Loosen the five captive screws that secure the base cover to the computer base.

Step 2 — Pry the Base Cover



- Using a plastic scribe, gently pry the base cover to release the tabs on the base cover from the slots on the computer base.

Step 3 — Lift the Base Cover



- Lift the base cover off the computer base.

Step 4 — Disconnect the Battery Cable



- Using a plastic scribe, disconnect the battery cable from the system board.

Step 5 — Press and Hold the Power-Button



- Press and hold the power button for five seconds to ground the system board.

Step 6 — Connect the Battery Cable



- Connect the battery cable to the system board.

Step 7 — Slide the Tabs



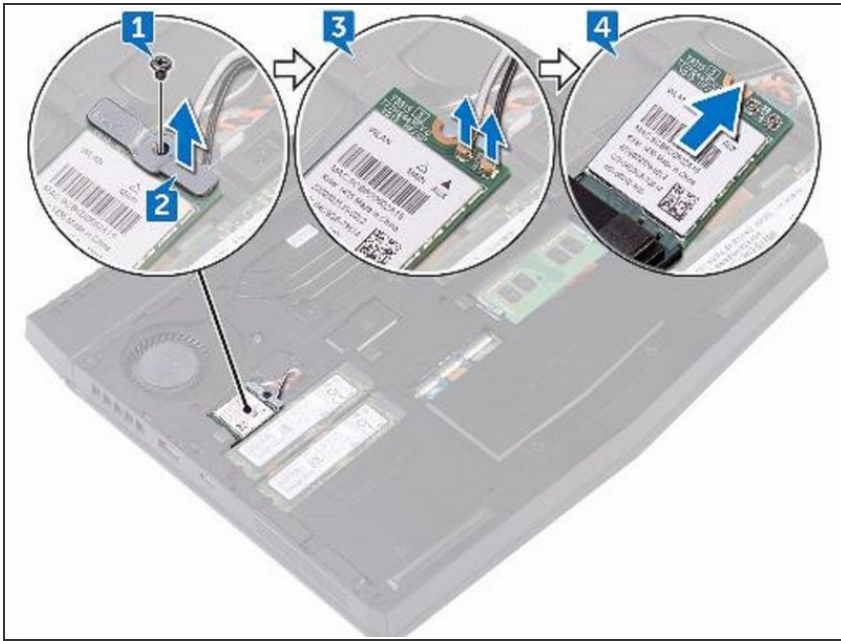
- Slide the tabs on the **NEW** base cover into the slots on the computer base and snap the base cover into place

Step 8 — Tighten the Five Captive Screws



- Tighten the five captive screws that secure the base cover to the computer base.

Step 9 — Align the Notch

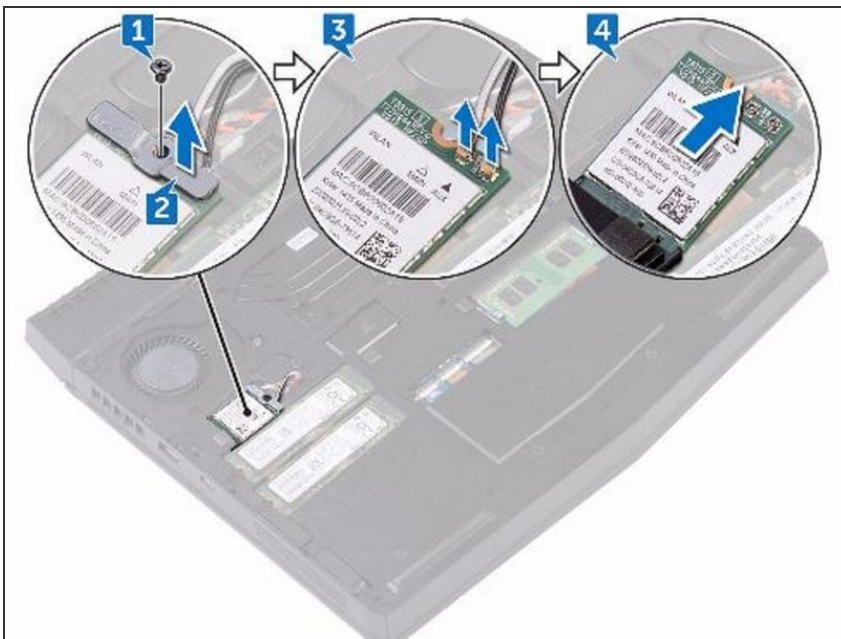


⚠ WARNING: Before working inside your computer, read the safety information that shipped with your computer and follow the steps in [Before Working Inside Your Computer](#). After working inside your computer, follow the instructions in [After Working Inside Your Computer](#).

⚠ CAUTION: To avoid damaging the wireless card, do not place any cables under it.

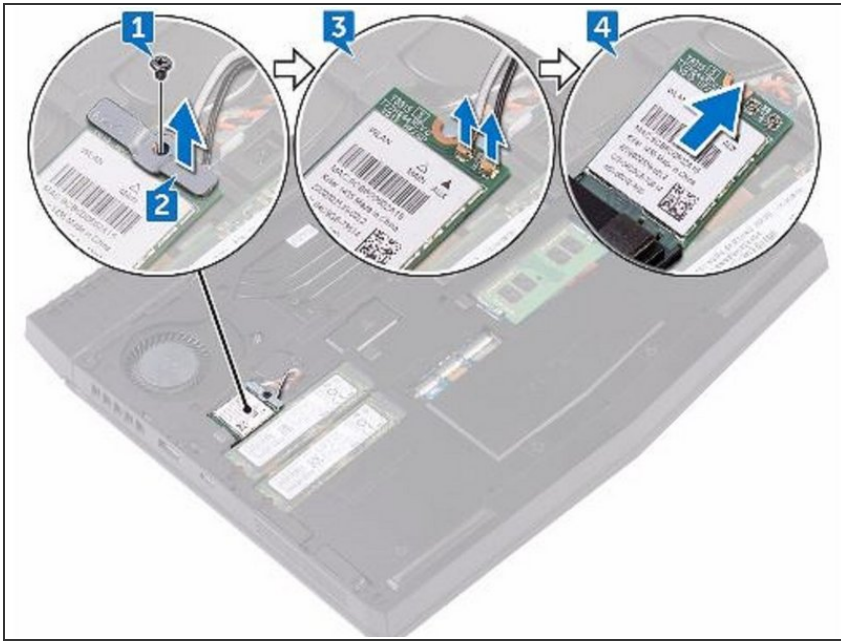
- Remove the screw (M2x3) that secures the wireless card and bracket to the computer base.

Step 10 — Lift the Wireless-Card Bracket



- Lift the wireless-card bracket off the wireless card.

Step 11 — Disconnecting the Antenna Cables



- Disconnect the antenna cables from the wireless card.

Step 12 — Align the Notch



⚠ CAUTION: To avoid damaging the wireless card, do not place any cables under it.

- Align the notch on the wireless card with the tab on the wireless-card slot.

Step 13 — Slide the Wireless Card



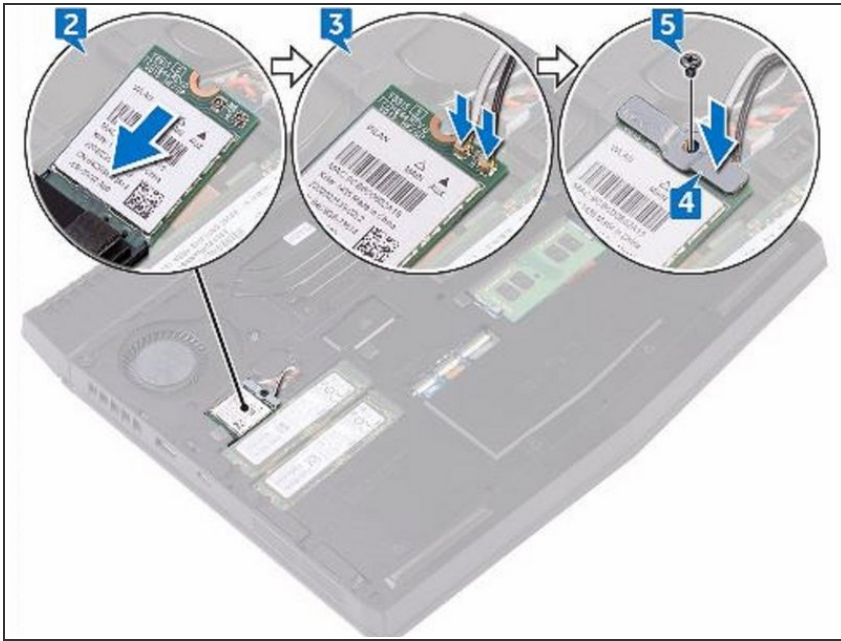
- Slide the **NEW** wireless card at an angle into the wireless-card slot.

Step 14 — Connect the Antenna Cables



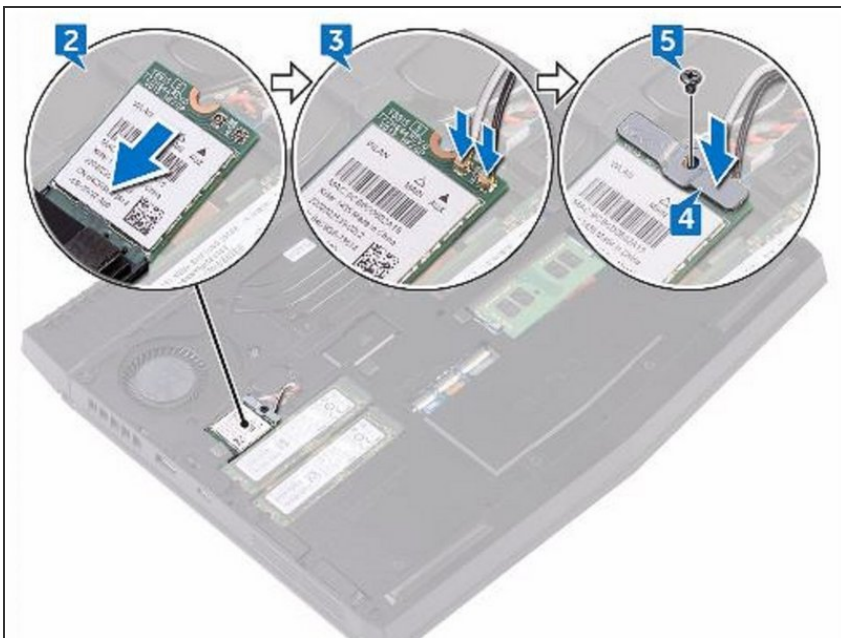
- Connect the antenna cables to the wireless card.

Step 15 — Align the Screw Hole



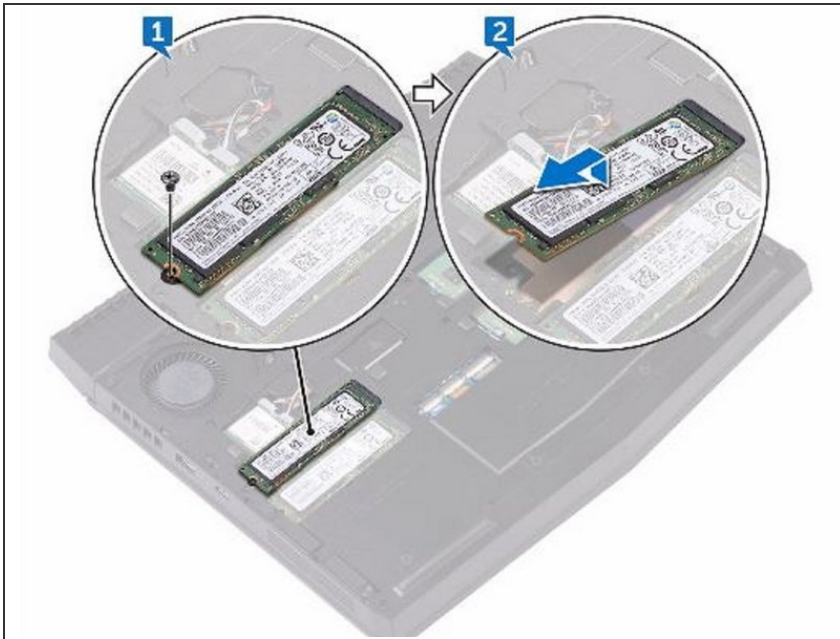
- Align the screw hole on the wireless-card bracket with the screw hole on the wireless card and the computer base.

Step 16 — Replace the Screw



- Replace the screw (M2x3) that secures the wireless-card bracket to the wireless card and the computer base.

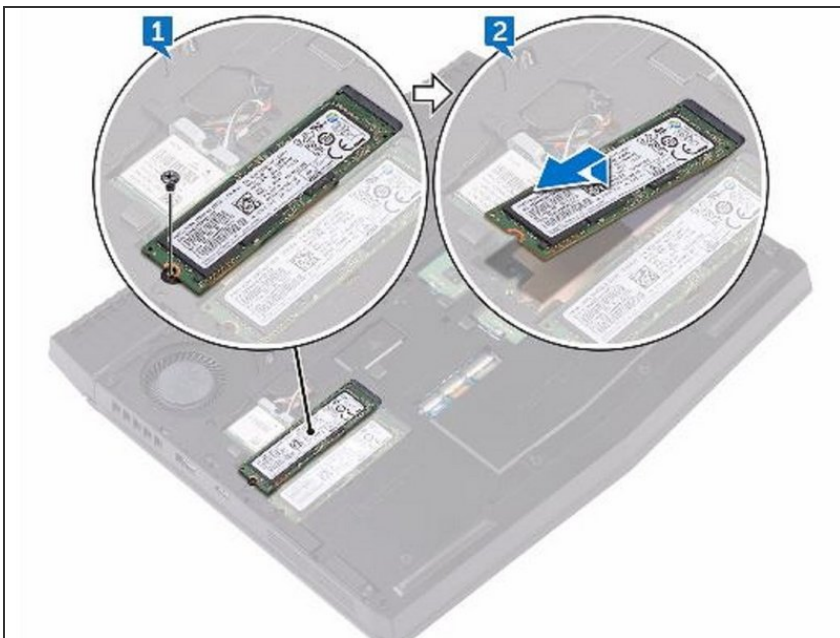
Step 17 — Remove the Screw



⚠ WARNING: Before working inside your computer, read the safety information that shipped with your computer and follow the steps in [Before Working Inside Your Computer](#). After working inside your computer, follow the instructions in [After Working Inside Your Computer](#).

- Remove the screw (M2x3) that secures the solid-state drive to the computer base.

Step 18 — Lift and Slide the Solid-State Drive



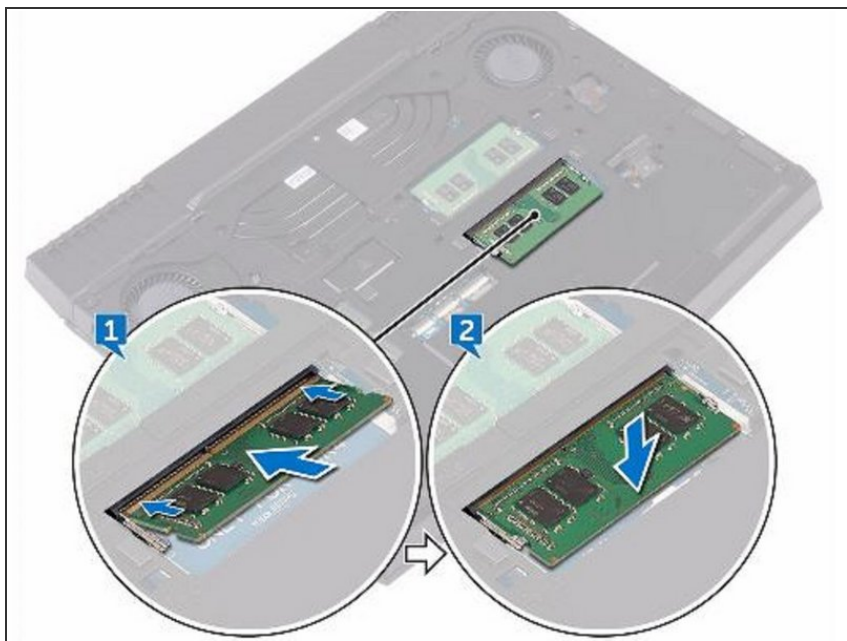
- Lift and slide the solid-state drive from the solid-state drive slot.

Step 19 — Align the Notch



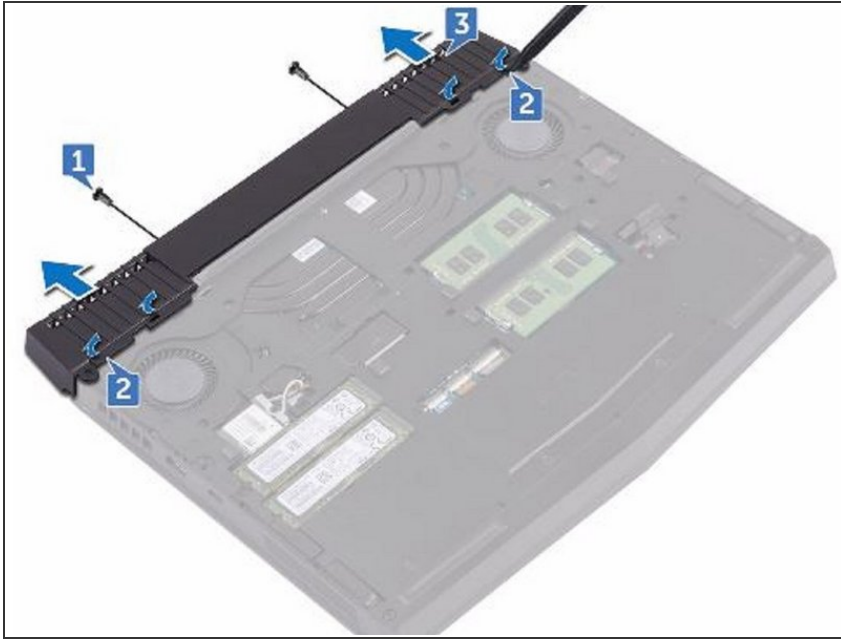
- Align the notch on the **NEW** solid-state drive with the tab on the solid-state drive slot and slide the solid-state drive into the solid-state drive slot.

Step 20 — Press the Memory Module



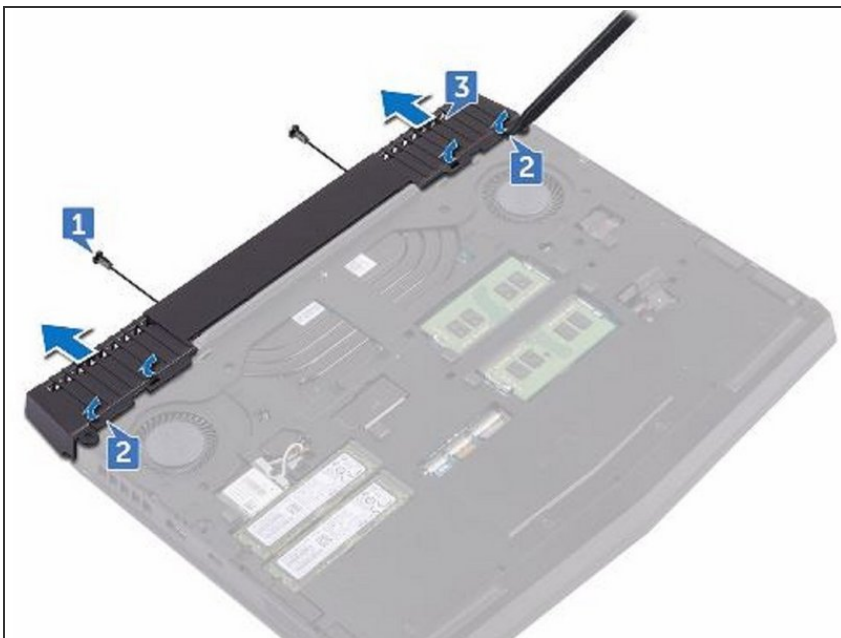
- Press the memory module down until it clicks into place.

Step 21 — Remove the Screws



- Remove the two screws (M2.5x6L) that secure the rear-I/O cover to the palm-rest assembly.

Step 22 — Using a Plastic Scribe



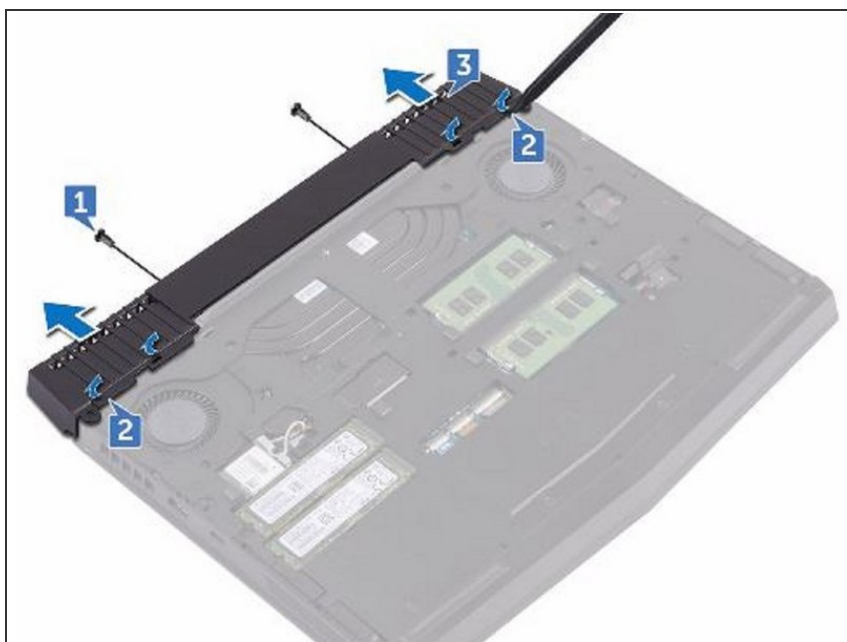
- Using a plastic scribe, gently release the tabs that secure rear-I/O cover to the computer base.

Step 23 — Removing the Rear-I/O



- Slide and remove the rear-I/O cover from the computer base.

Step 24 — Sliding the Rear-I/O



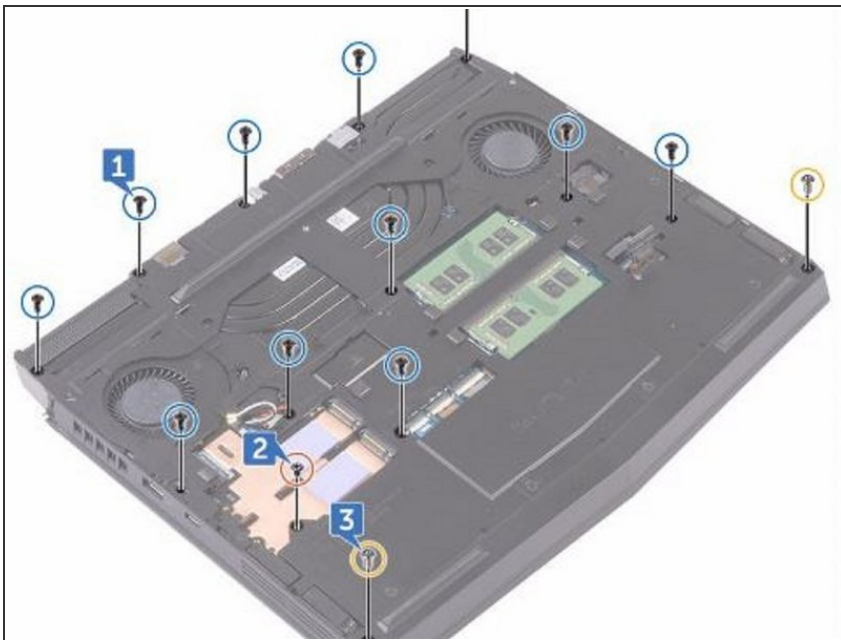
- Slide the **NEW** rear-I/O cover into the slots on the computer base and snap the rear-I/O cover into place.

Step 25 — Replace the two Screws



- Replace the two screws (M2.5x6L) that secure the rear-I/O cover to the palm-rest assembly.

Step 26 — Remove the Screws

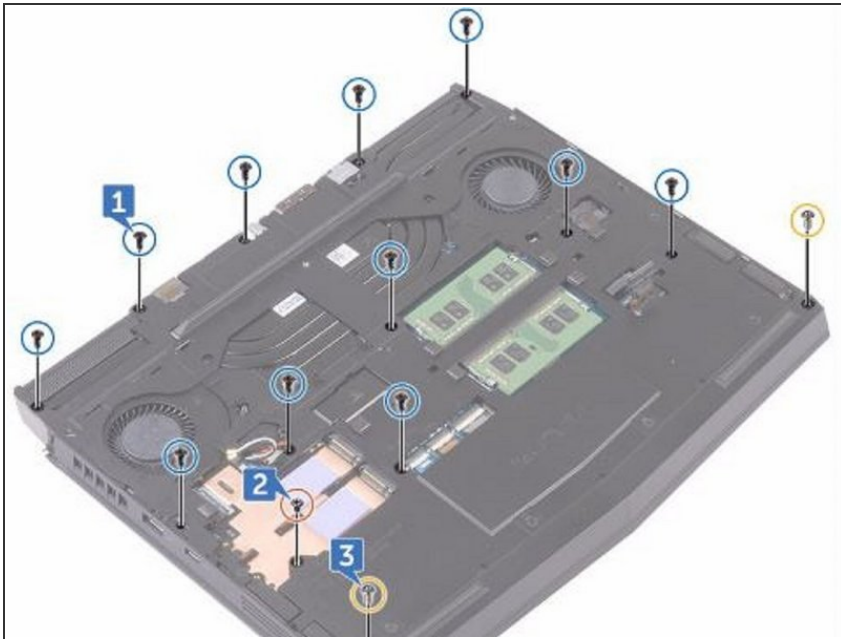


⚠ WARNING: Before working inside your computer, read the safety information that shipped with your computer and follow the steps in [Before Working Inside Your Computer](#). After working inside your

computer, follow the instructions in [After Working Inside Your Computer](#).

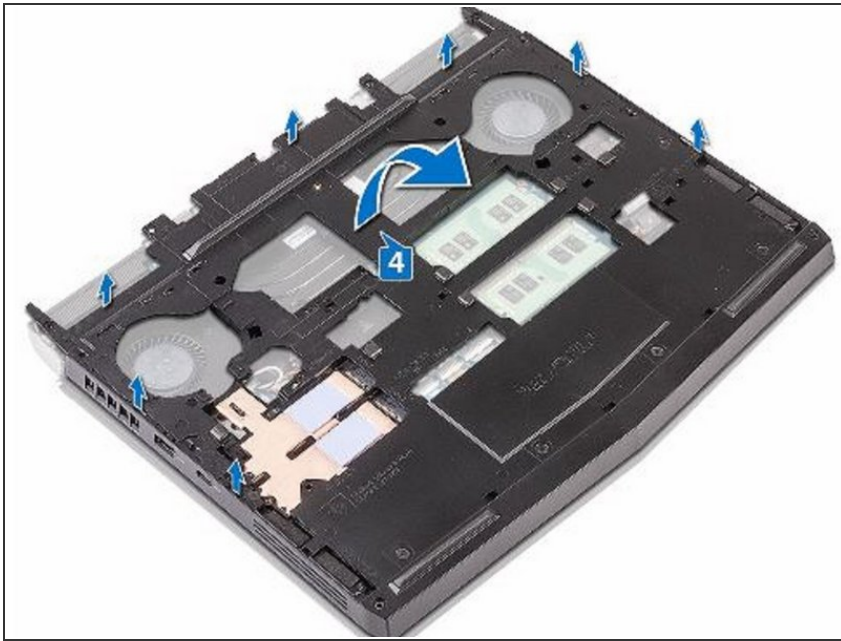
- Remove the eleven (M2.5x6L) screws that secure the computer base to the palm-rest assembly.

Step 27 — Remove the Screw



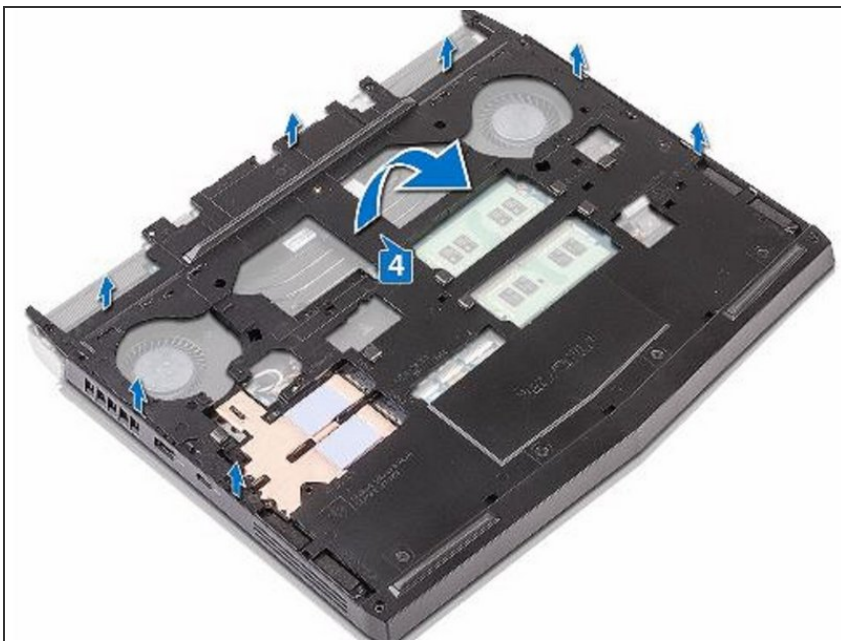
- Remove the (M2x3) screw that secures the computer base to the palm-rest assembly.

Step 28 — Remove the Two Screws



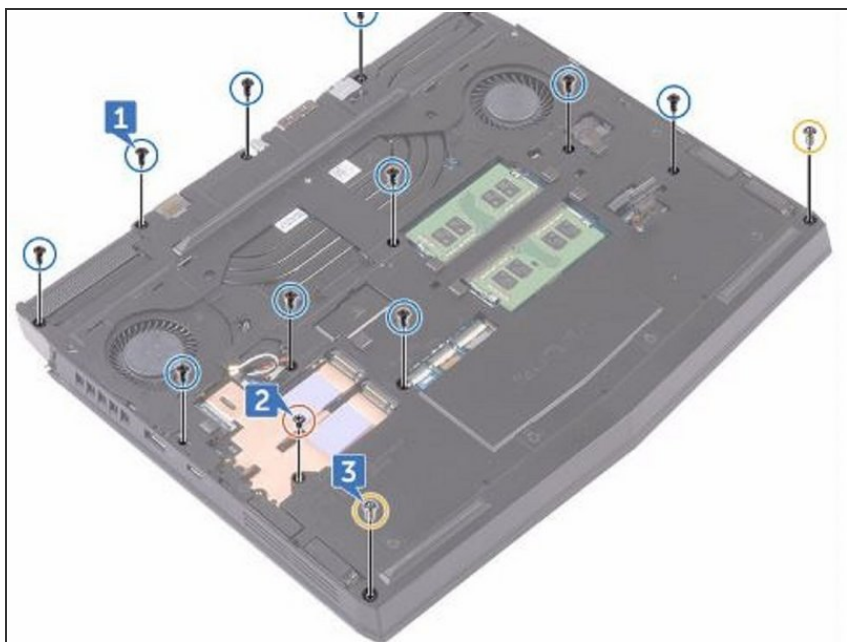
- Remove the two (M2.5x6L) screws that secure the computer base to the palm-rest assembly.

Step 29 — Lift the Computer Base



- Lift the computer base from the palm-rest assembly.

Step 30 — Align the Screw Holes



- Align the screw holes on the **NEW** computer base with the screw holes on the palm-rest assembly.

Step 31 — Replace the Screws



- Replace the two (M2.5x6L) screws that secure the computer base to the palm-rest assembly.

Step 32 — Replace the Screw



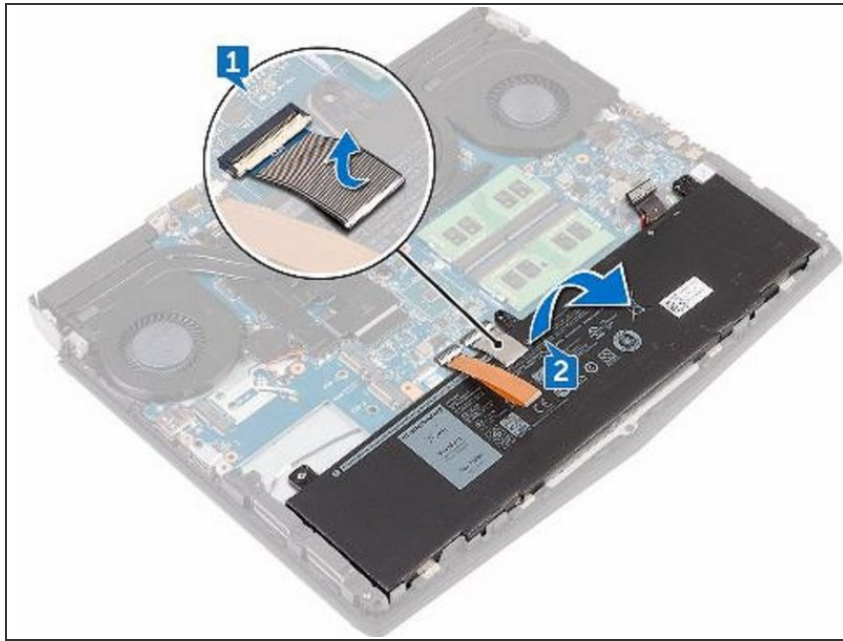
- Replace the (M2x3) screw that secures the computer base to the palm-rest assembly.

Step 33 — Replace the Eleven Screws



- Replace the eleven (M2.5x6L) screws that secure the computer base to the palm-rest assembly.

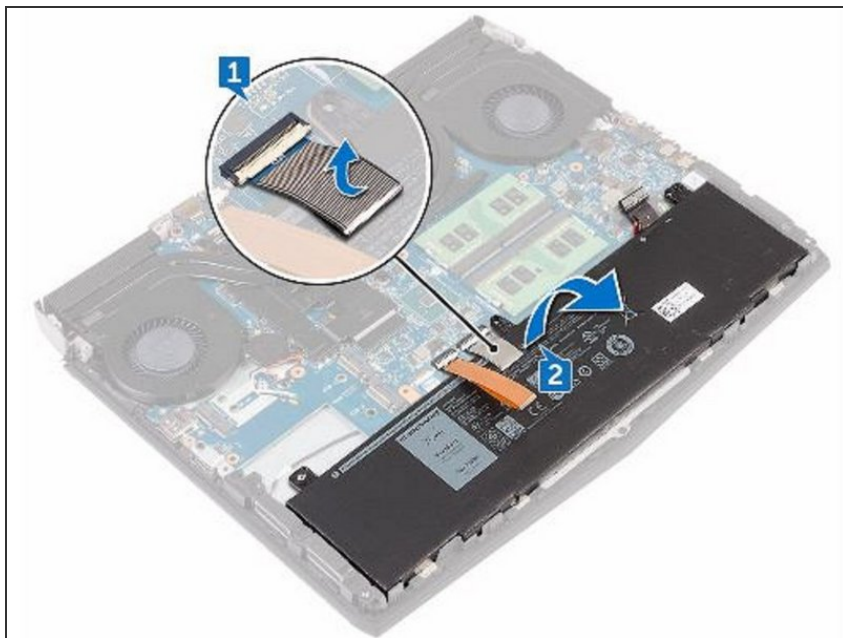
Step 34 — Peeling the Keyboard Connector



⚠ WARNING: Before working inside your computer, read the safety information that shipped with your computer and follow the steps in [Before Working Inside Your Computer](#). After working inside your computer, follow the instructions in [After Working Inside Your Computer](#).

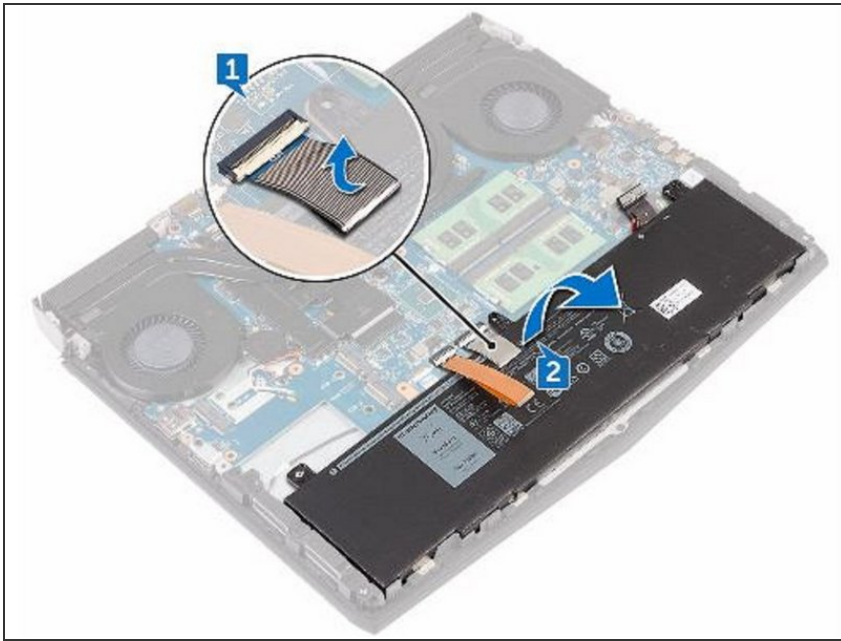
- Peel off the keyboard connector from the battery.

Step 35 — Lifting the Battery



- Lift the battery off the palm-rest assembly.

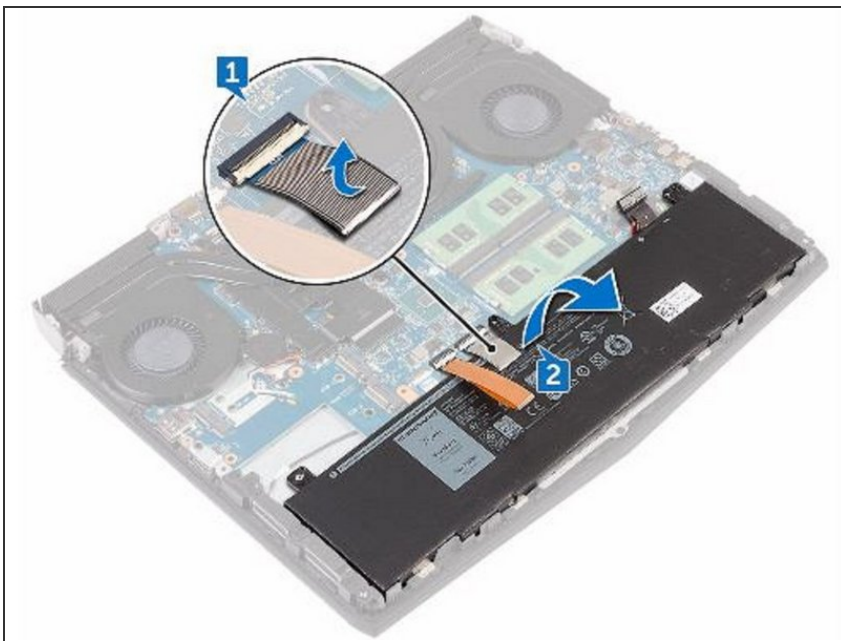
Step 36 — Placing the New Battery



CAUTION: Ensure the keyboard and keyboard-backlit cables are not under the battery.

- Using the alignment post, place the **NEW** battery on the palm-rest assembly.

Step 37 — Adhering the Keyboard



- Adhere the keyboard connector that secures the battery to the palm-rest assembly.

To reassemble your device, follow these instructions in reverse order.