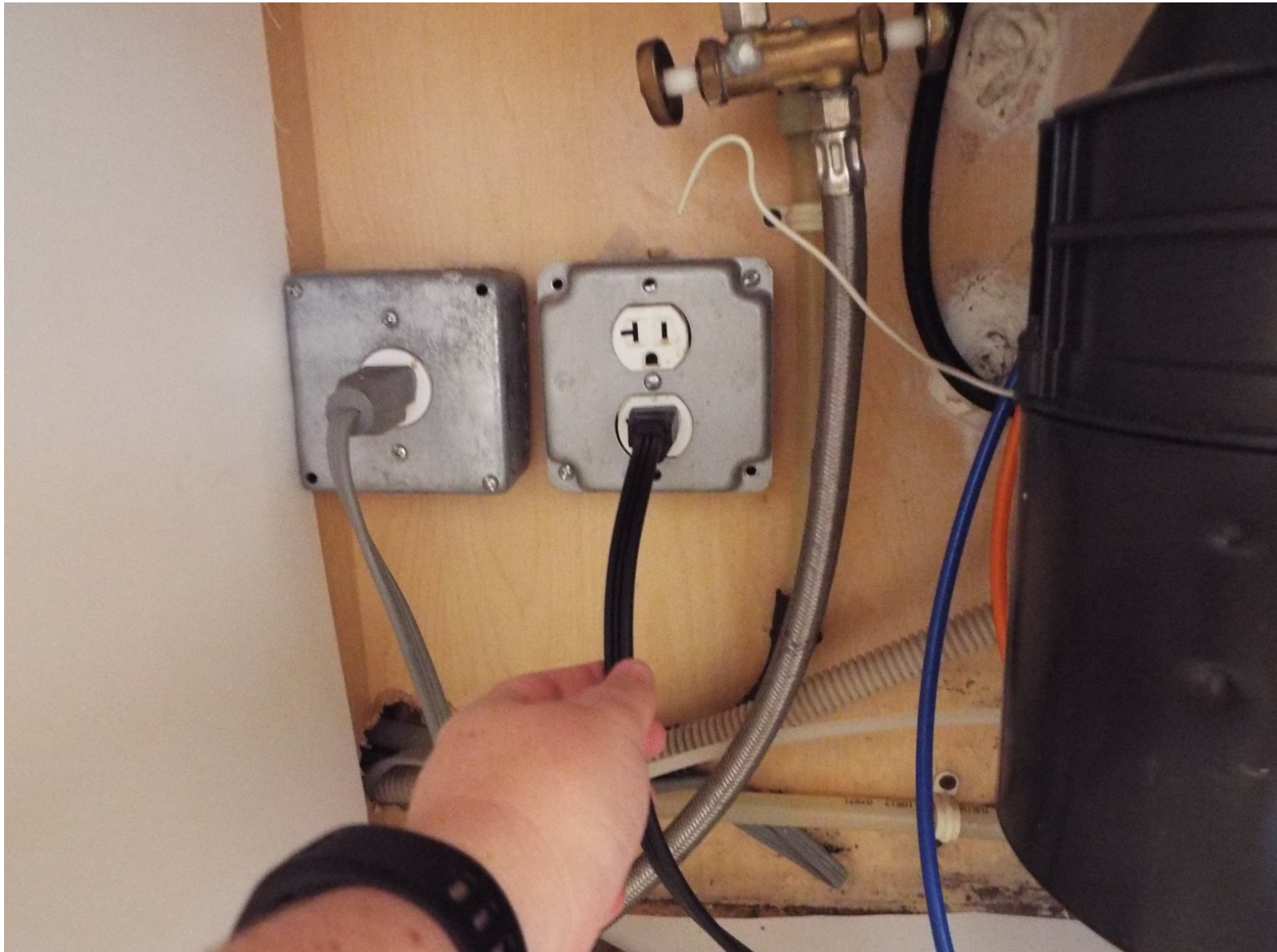




How to Fix a Leaking Garbage Disposal at Flange

Fix a leaking garbage disposal by disassembly, reassembly, and Plumber's putty.

Written By: Amy Haren



INTRODUCTION

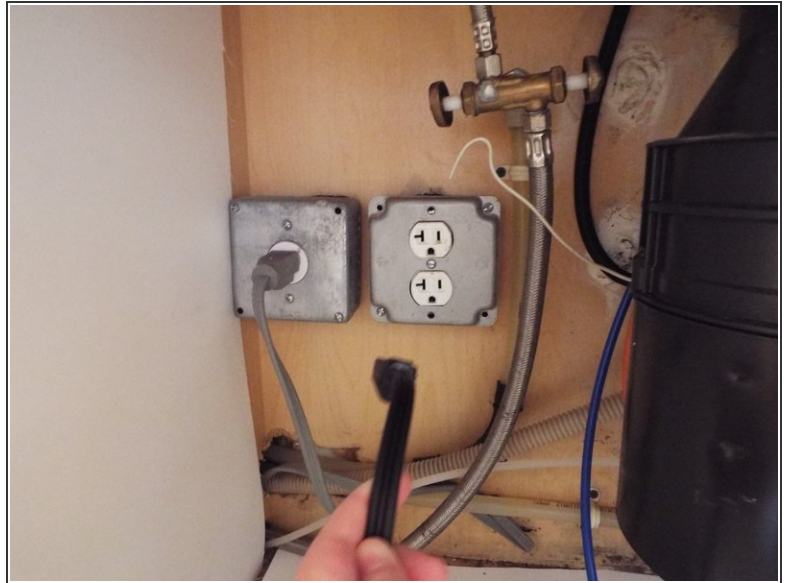
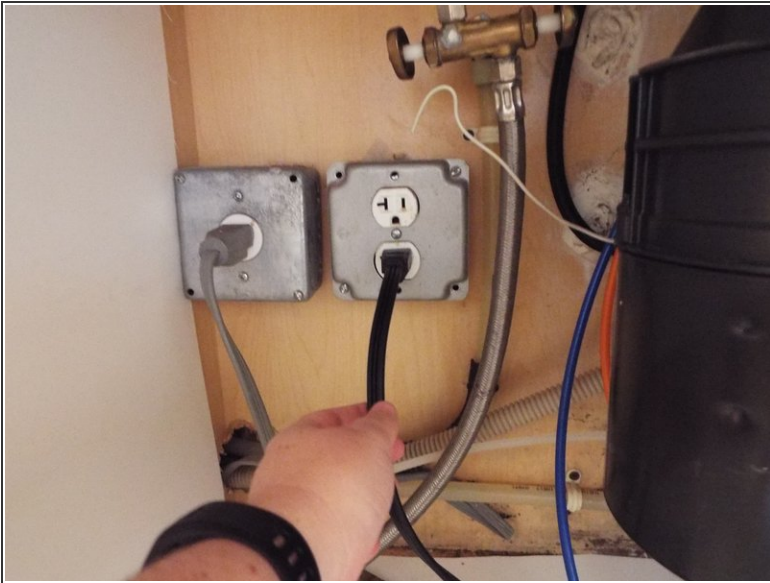
Water damage is one of the most difficult disasters to deal with. A leaking sink can flood your cabinets, create mold, and cause thousands of dollars of damage. I have prepared a relatively simple and inexpensive fix to repair a leaking garbage disposal without the hassle of calling a plumber and spending a larger amount of money. This fix requires a screwdriver, a hammer or chisel, and Plumber's Putty.



TOOLS:

- [Phillips #0 Screwdriver](#) (1)
 - [Plumbers putty](#) (1)
 - [6-in-1 Screwdriver](#) (1)
 - [Channellock Groove Joint Pliers](#) (1)
-

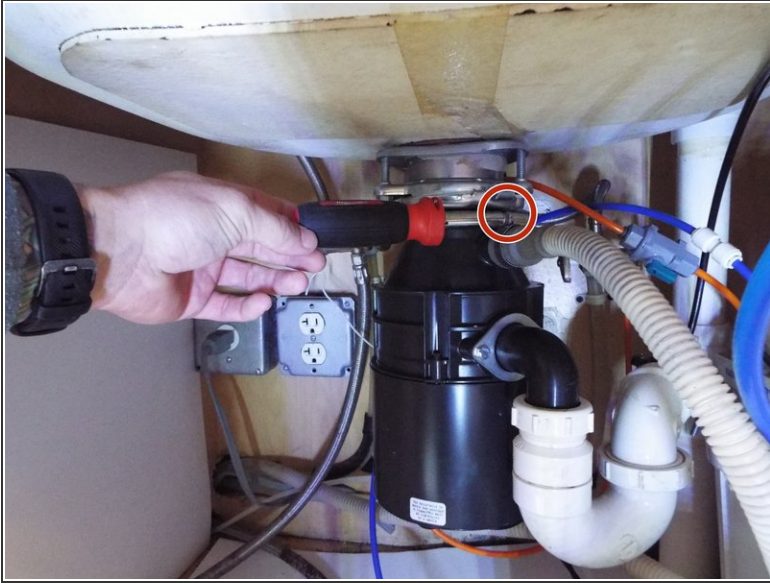
Step 1 — How to Fix a Leaking Garbage Disposal at Flange



- Unplug the garbage disposal from the power source.

⚠ Be sure to place the wall plug in a dry location for the duration of the fix.

Step 2



- Loosen and disconnect the dishwasher drain hose from the garbage disposal unit by loosening the clamp and removing the screws with a flathead screwdriver.
- Pull the gray tube from the disposal.

Step 3



- Remove the three screws from the flange at the top of the garbage disposal unit. These screws are at the top right above the black disposal box.
- Disconnect the lock-nut at the flange.
- ⓘ Adequate lighting is imperative for this step.

Step 4



- Use the screwdriver to turn the locking ring counter clock-wise, disengaging the drain hose and disposal.
- ⓘ You will be able to hear the locking ring come undone after pushing it forcefully to the left.
- The disposal will drop down—be sure to catch the disposal and place on the bottom of the sink.
- Move from underneath the sink to the top of the sink.

Step 5



- To remove the flange, push from underneath the sink with one hand and pull it out through the top of the sink with your other hand.
- Scrape off ALL excess putty from the flange and the sink.

Step 6



- Remove a small ball of putty and roll into a golf ball shape.
- Roll the putty flat into a snakelike shape, approximately 3/4 inch diameter.
- ⓘ Be sure that the putty is long enough to wrap completely around the flange.

Step 7



- Wrap the putty around the flange and place the flange back into the sink.
- Press down hard into the sink and remove any excess Plumber's Putty.

Step 8



- Reassemble the flange and garbage disposal by reversing these steps.
- Put a sink stopper in and fill up the sink approximately halfway.
- Remove the stopper and check underneath the sink to make sure there are no leaks.

To reassemble your device, follow these instructions in reverse order.