



Instant Pot Smart-60 Disassembly

Disassembly of Instant Pot Smart 6 quart - key differences from Duo series

Written By: Zen1



INTRODUCTION

Key wiring photos of Instant Pot Smart 6 quart. Most useful if you first watch an older model repair video elsewhere.



TOOLS:

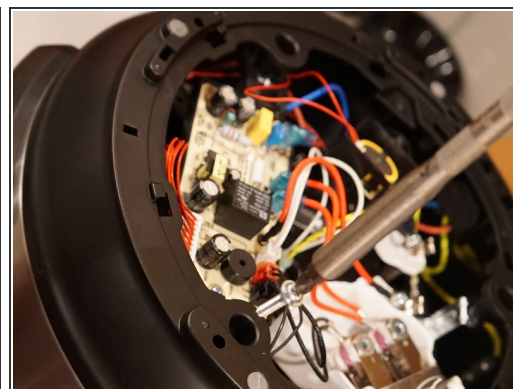
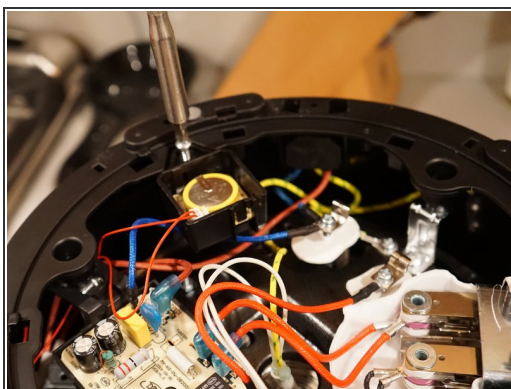
- [Philips Screwdrivers \(one normal, one small\)](#)
(1)
 - [Small Needle Nose Pliers](#) (1)
-

Step 1 — Bottom access plate screw



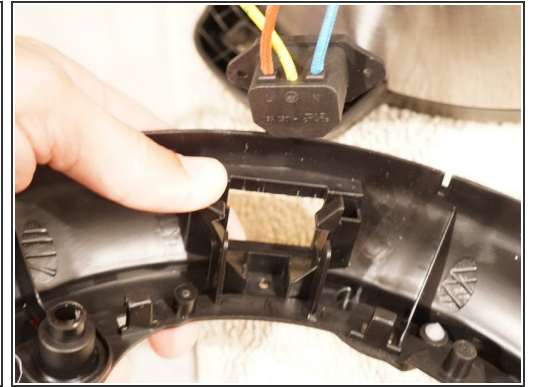
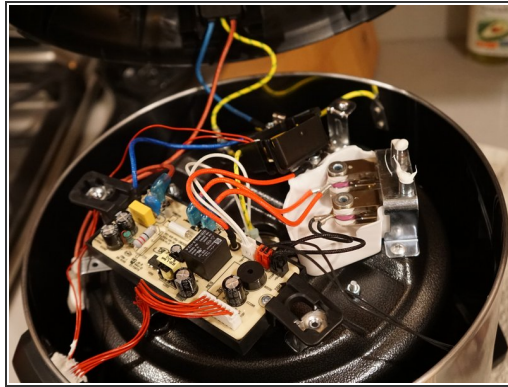
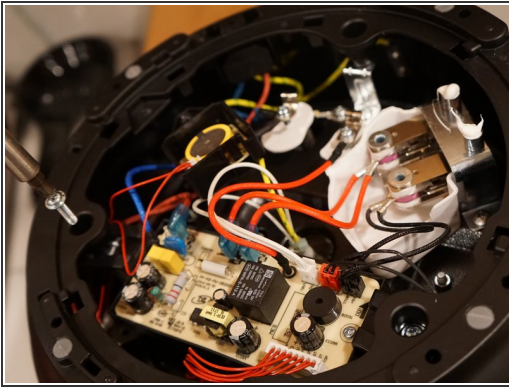
- Insert wisdom here.

Step 2 — Bottom bracket - remove battery holder, then 3x bolts



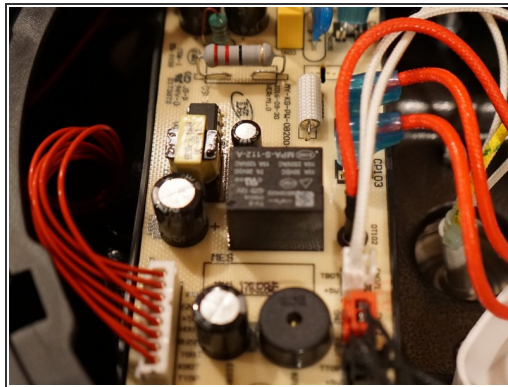
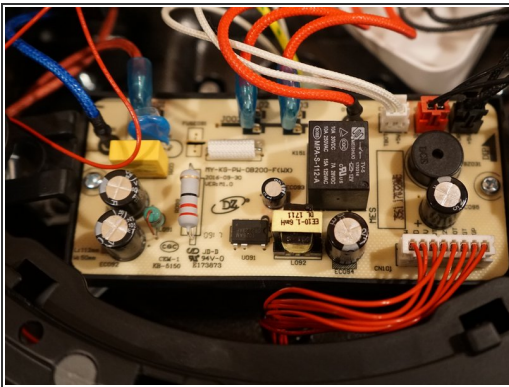
- Remove 3x bolts

Step 3 — Bottom bracket - snap out power receptacle



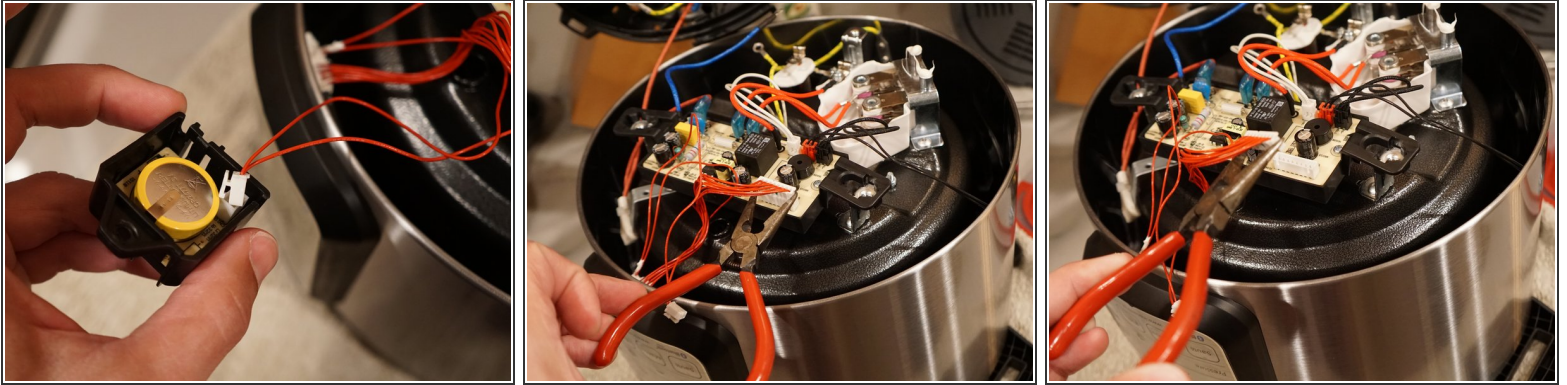
- Insert wisdom here.

Step 4 — Circuit board 1



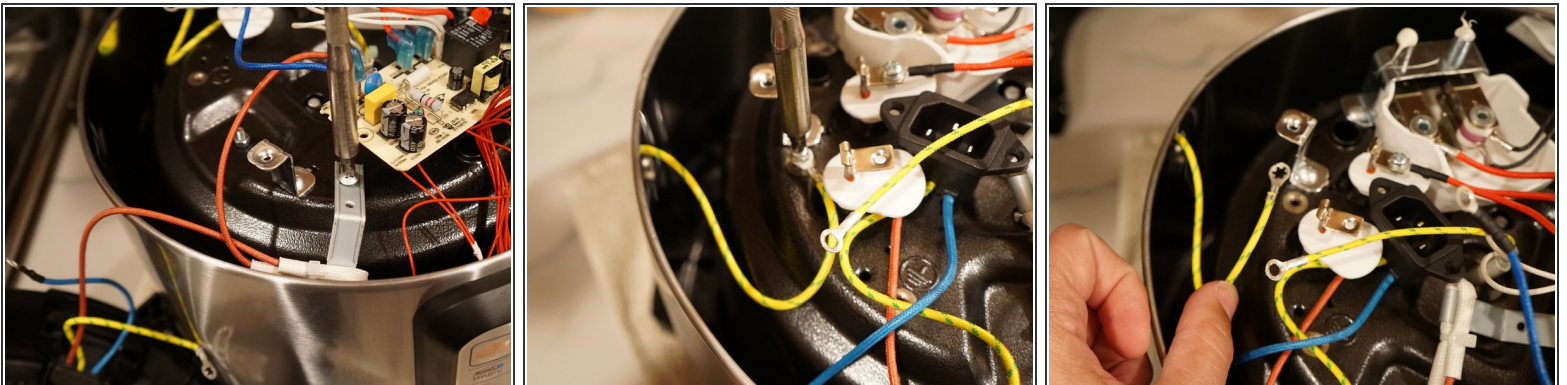
- Black molex connector on top right must come out to remove the outer shell.
- Red wire spring clips with blue translucent covers I was unable to remove safely, I suggest removing other ends of those wires if you need to remove the heating element plate.

Step 5 — Battery and front panel wires



- I needed small needle nose pliers to pinch and remove wide front panel connector.

Step 6 — Outer shell ground wire



- Insert wisdom here.

Step 7 — Outer shell removal - release tape from lid sensor wire



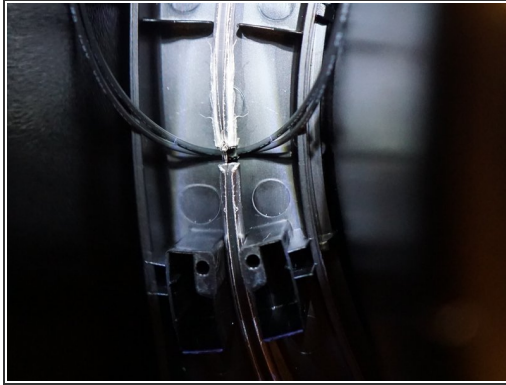
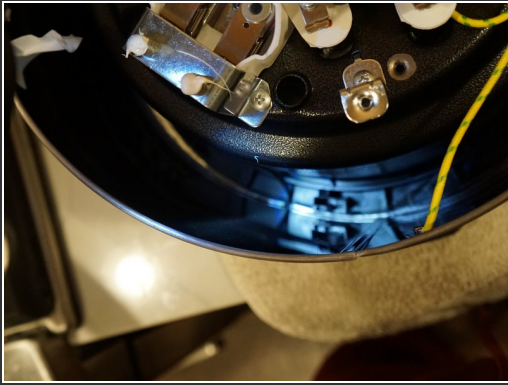
- Insert wisdom here.

Step 8 — Outer shell re-assembly - lid sensor wire notch



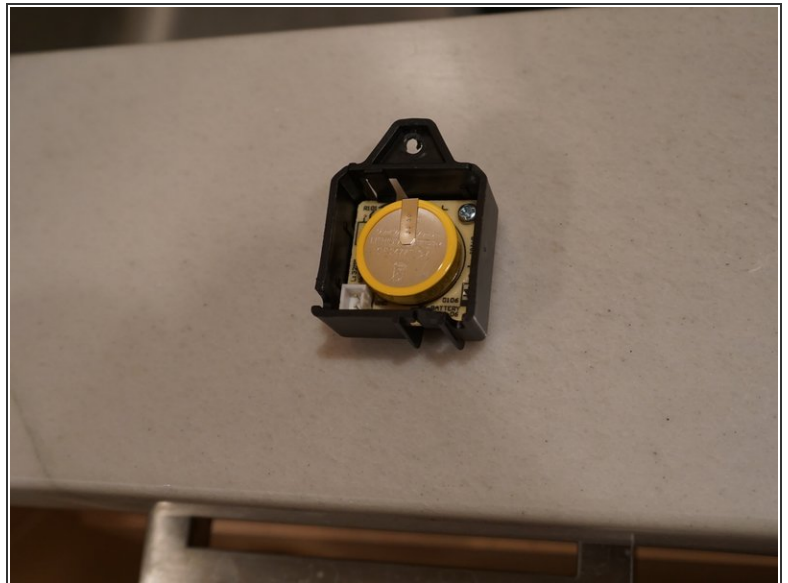
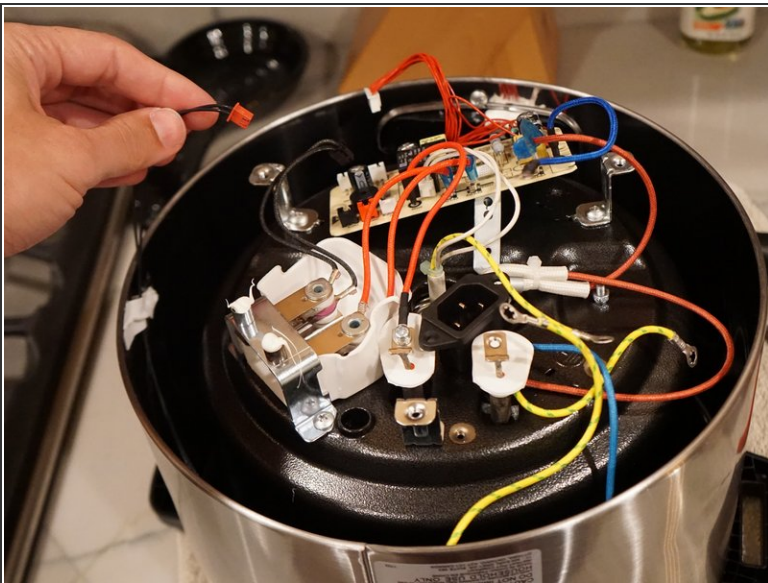
- I'm skipping removing heating element and nearby sensors, it's similar to other models. Search for Instant Pot repair videos for instructions.

Step 9 — Outer shell re-assembly - lid sensor wire goes into notch



- Insert wisdom here.

Step 10 — Outer shell re-assembly



- Pull lid sensor wire up, re-tape to inside of outer shell.
- Battery replacement, you should remove the screw and pull the mini circuit board holding the battery before attempting to swap batteries.

To reassemble your device, follow these instructions in reverse order.