



# Fast Fix Box Cutter Blade Replacement

An easy and safe process of replacing the blade of a box cutter.

Written By: Peace Adeyemo



---

## INTRODUCTION

Over time your box cutter can become dull, rusted, or even break off. If this happens to you then this guide is perfect for you. Warning this replacement involves dealing with a sharp blade so be sure to use caution.



### TOOLS:

- [Phillips #2 Screwdriver](#) (1)
-

## Step 1 — Blade



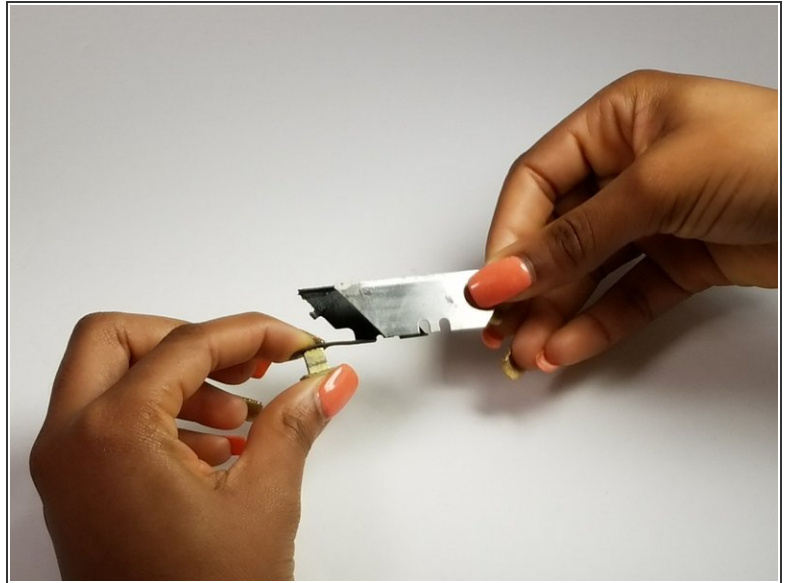
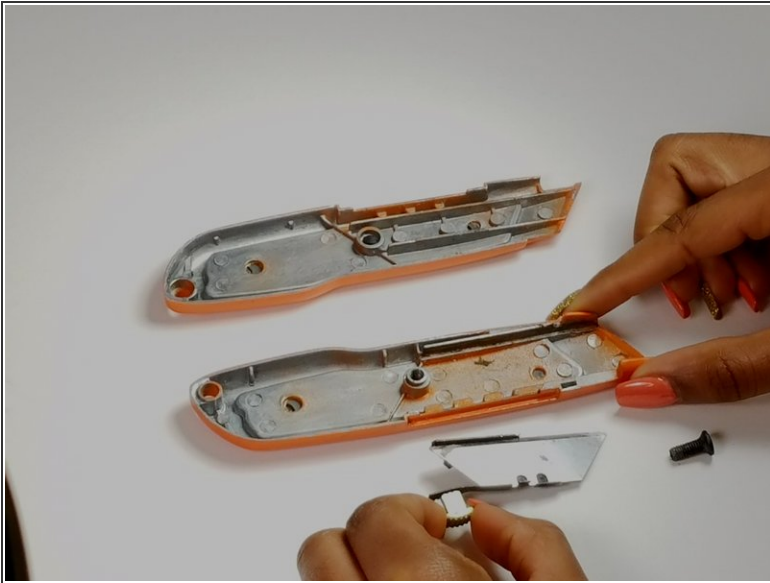
- The case screw can easily be removed by using a Stanley #2 screwdriver or any other #2 screwdriver.

## Step 2




- Separate casing by simply pulling apart both halves.

### Step 3




- Carefully, using the pull tab, take out the blade holder and set it on the table.
- Remove the blade by carefully sliding it out of the holder.

 Be very careful when dealing with the blade as it is sharp.

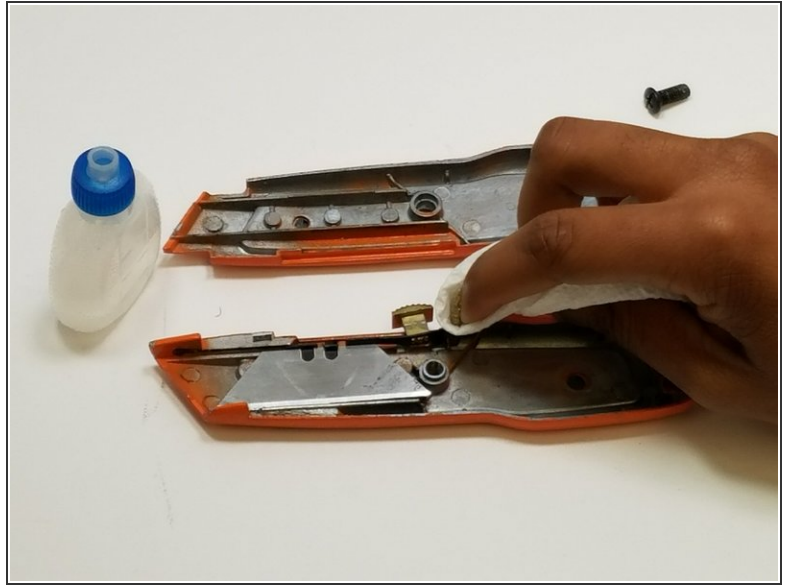
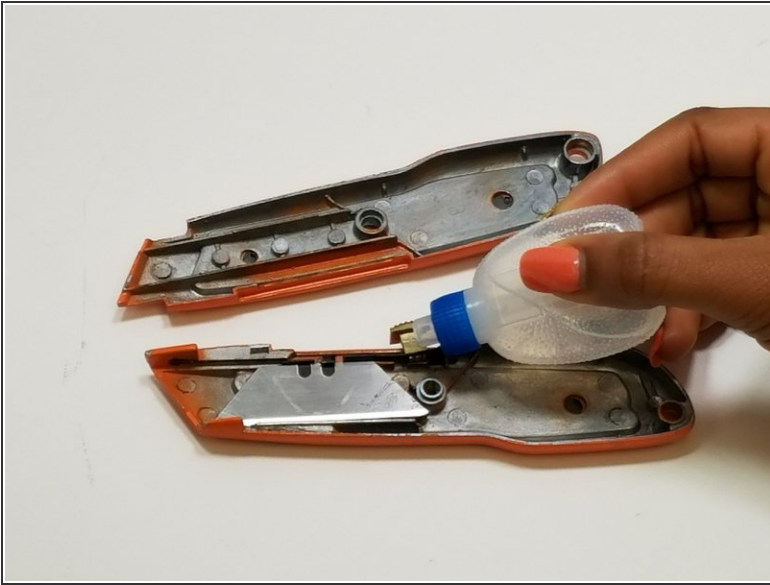
## Step 4



- Replace the old blade with the new blade by carefully sliding it into the blade holder.
- Place the blade holder back into the casing using the pull tab to hold it.

 Be very careful when dealing with the blade as it is sharp.

## Step 5



- Add grease to the sliding mechanism
- Use either a paper towel or a cloth to spread the grease around the sliding mechanism.

## Step 6



- Take the other half without the blade and put it back together with the other half with the blade.
- Snap the two parts together.
- Place the screw back in to hole while holding the casing together.

## Step 7



- Use Stanley #2, or any other #2, screwdriver to screw the casing back together.
- To ensure proper placement of the blade, activate the mechanism that slides the blade out.
- Once it comes out, like in second picture, you are done.

To reassemble your device, follow these instructions in reverse order.