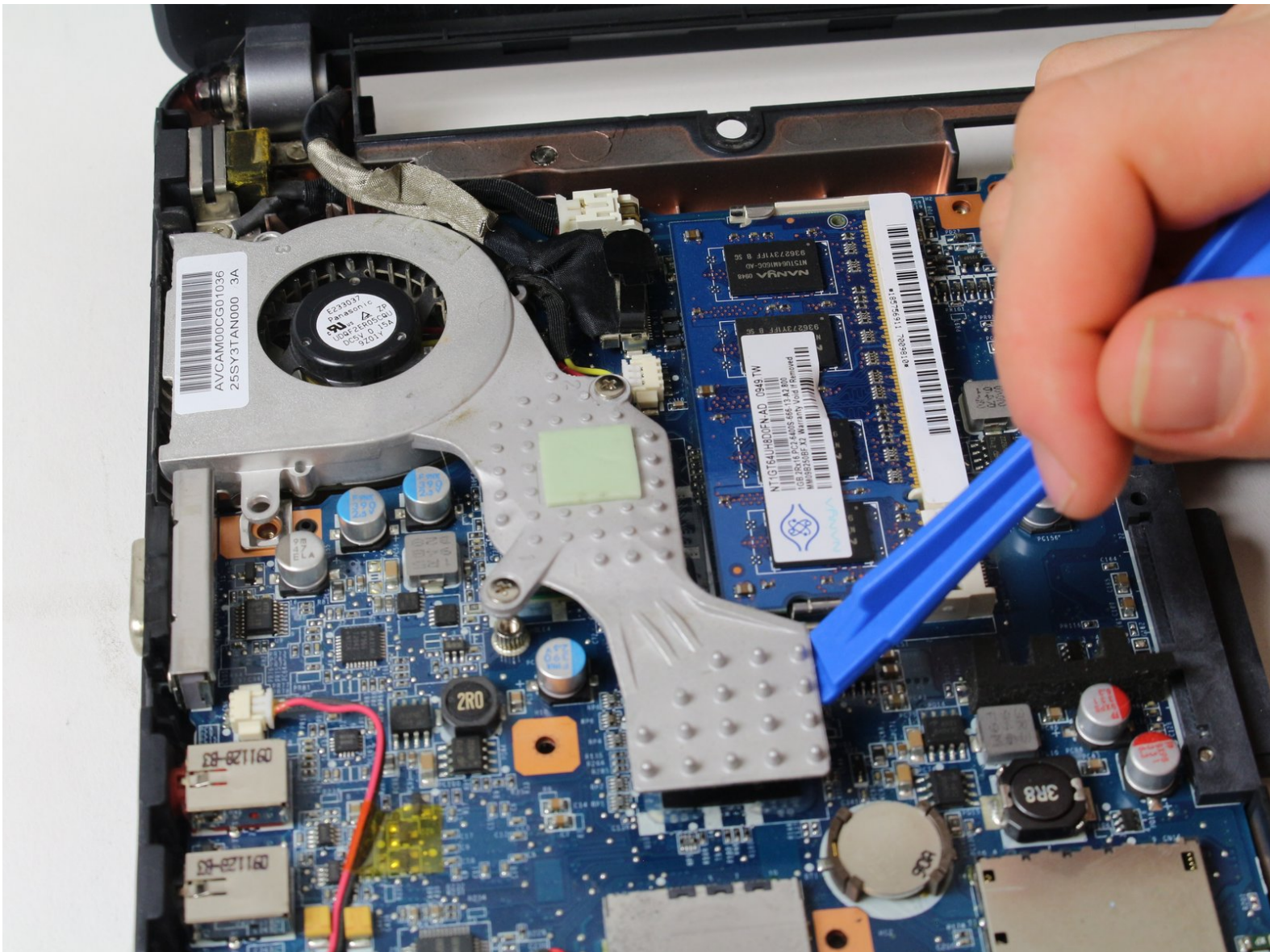




# Sony Vaio VPCW211AX Fan Replacement

This guide will show you how to replace the fan in your Sony Vaio computer.

Written By: Giselle Dougan



# INTRODUCTION

This guide will show you how to replace the fan in your Sony Vaio computer. You will need to have completed the keyboard replacement guide first.



## TOOLS:

- [iFixit Opening Tools](#) (1)
- [Phillips #0 Screwdriver](#) (1)
- [Metal Spudger](#) (1)



## PARTS:

- [Sony Vaio T13 SVT13 Keyboard Black](#) (1)
- [Sony Fan](#) (1)

## Step 1 — Keyboard



- Start with the laptop face up on a flat surface.

## Step 2



- Open the laptop with the keyboard facing you.

## Step 3



- Use a plastic opening tool to pry up the keyboard. Start at the end closest to the screen.
- ⓘ Be careful around the edges; work your way around the keyboard until all of it is detached.
- ⚠ There will be a ribbon cable attached to the bottom of the keyboard. Be sure not to rip the cable when lifting the keyboard from the laptop frame.



## Step 4



- Carefully detach the ribbon from the base of the computer with your hands.
- Remove the keyboard.

## Step 5 — Fan



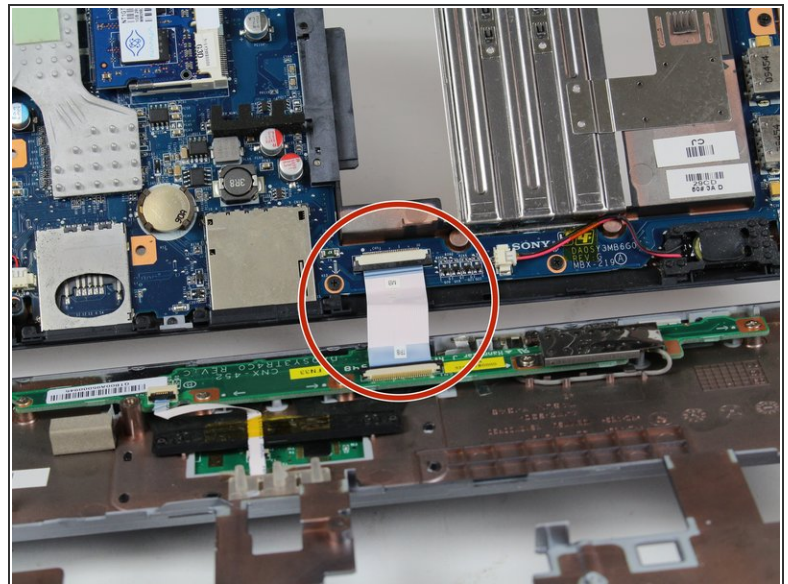
- Use a Philips #0 screwdriver to remove the 7 top case screws.

## Step 6



- Using a metal spudger, pry open at the seams.
- Open the gray top of the laptop from the base black portion.
- Slide the spudger along the seam, and then carefully open the top.

## Step 7

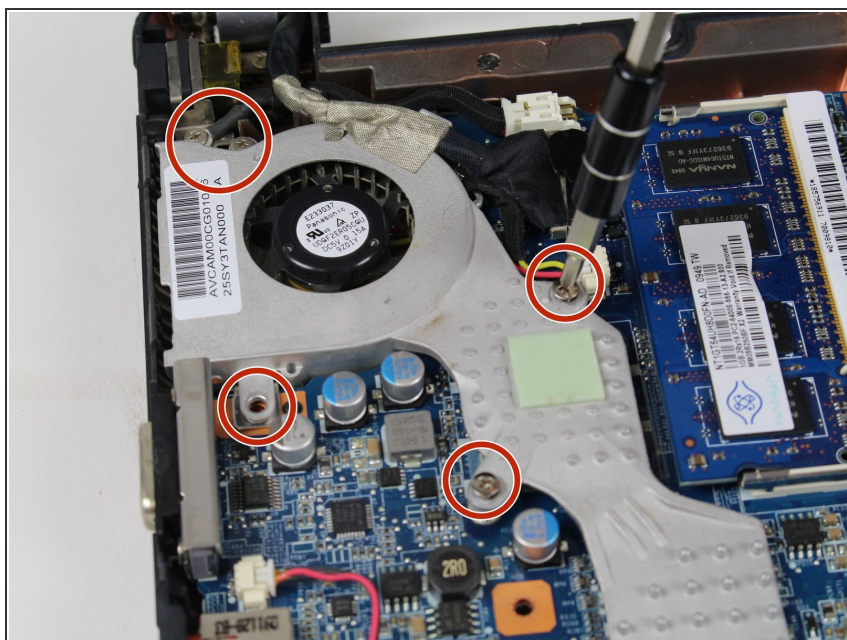


- Open the top carefully without disconnecting the two parts.

⚠ Be mindful and careful of the ribbon cable attaching the two parts together.

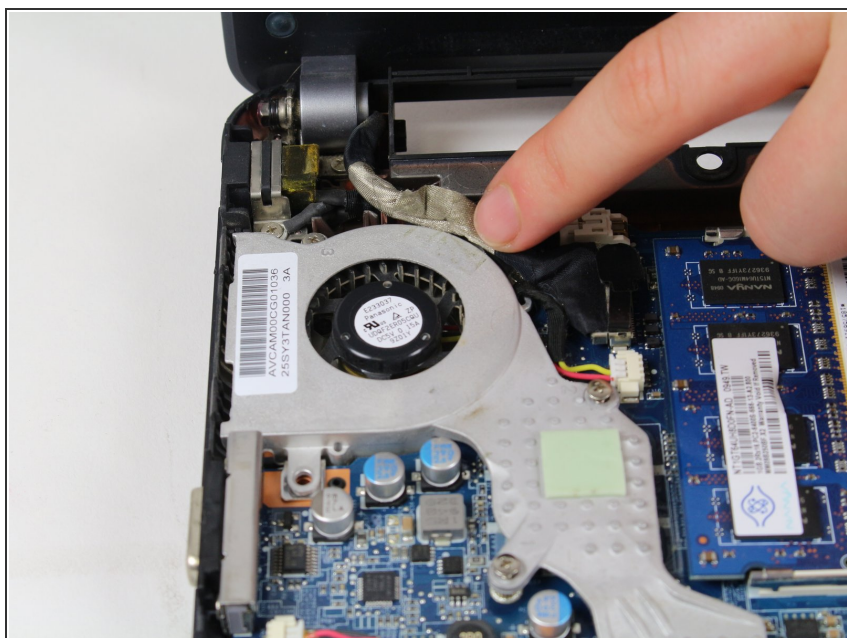


## Step 8



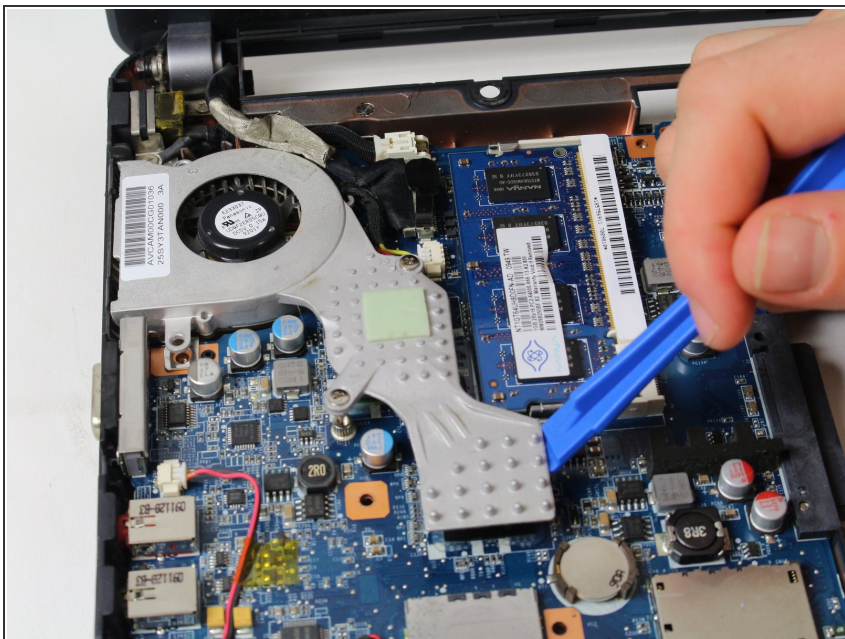
- Use a Philips #0 screwdriver to unscrew the 4 heatsink screws.

## Step 9



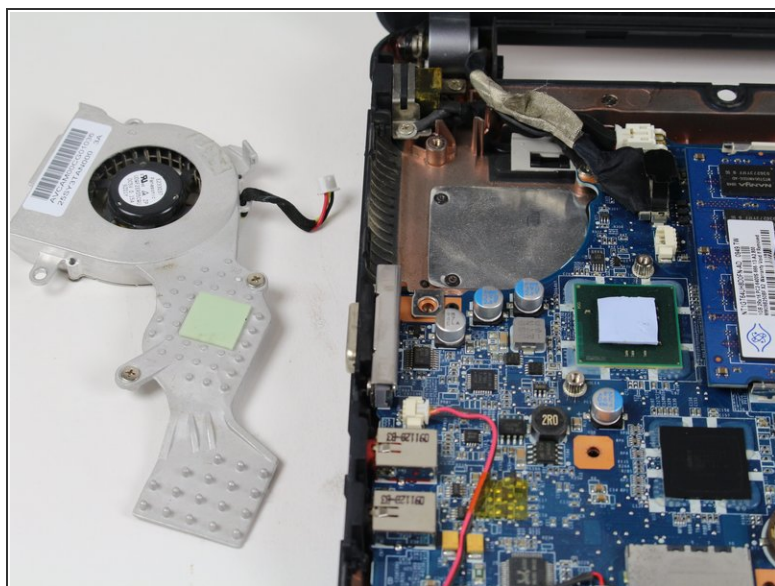
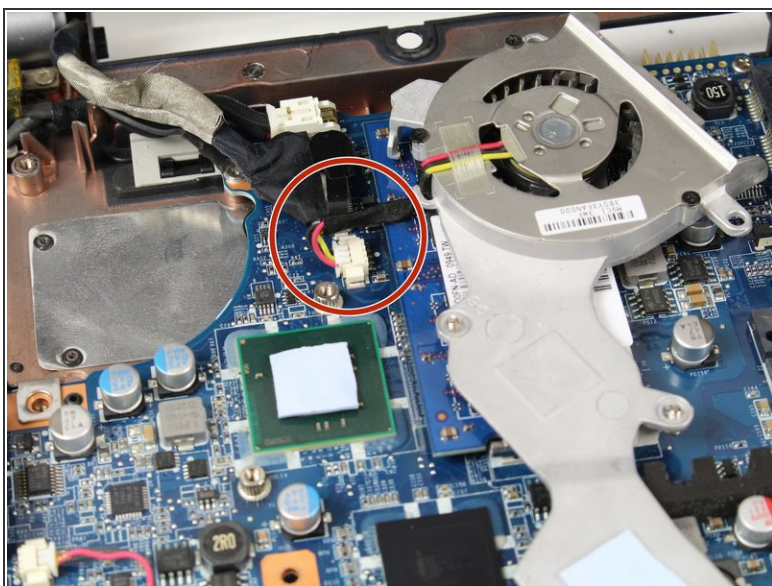
- If there is electrical tape, remove it with your finger.

## Step 10



- Using the plastic opening tool, pry up the unscrewed fan.

## Step 11



- The fan will still be attached by a small red and yellow wire, with your fingers detach this carefully.
- Remove the fan.



To reassemble your device, follow these instructions in reverse order.