



Toshiba Satellite C55-A5100 Hard Drive Replacement

This guide will demonstrate how to correctly replace the hard drive on a Toshiba Satellite laptop.

Written By: Walker Tortorigi



INTRODUCTION

If you ever find yourself wishing you had more capacity in your laptop's hard drive, replacing your old one with a larger one might be the option for you. This guide will show you how to replace the old hard drive in a Toshiba Satellite with a new one.



TOOLS:

- [Phillips #1 Screwdriver](#) (1)
-

Step 1 — Battery



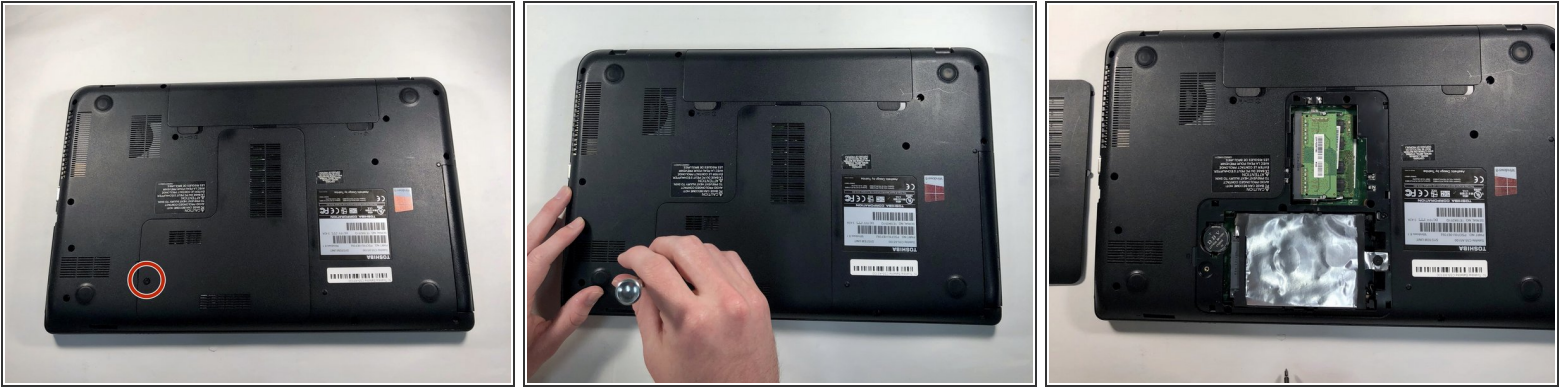
- Press down with your fingers while also applying a sliding motion on the latch buttons near the battery on the underside of your laptop.

Step 2



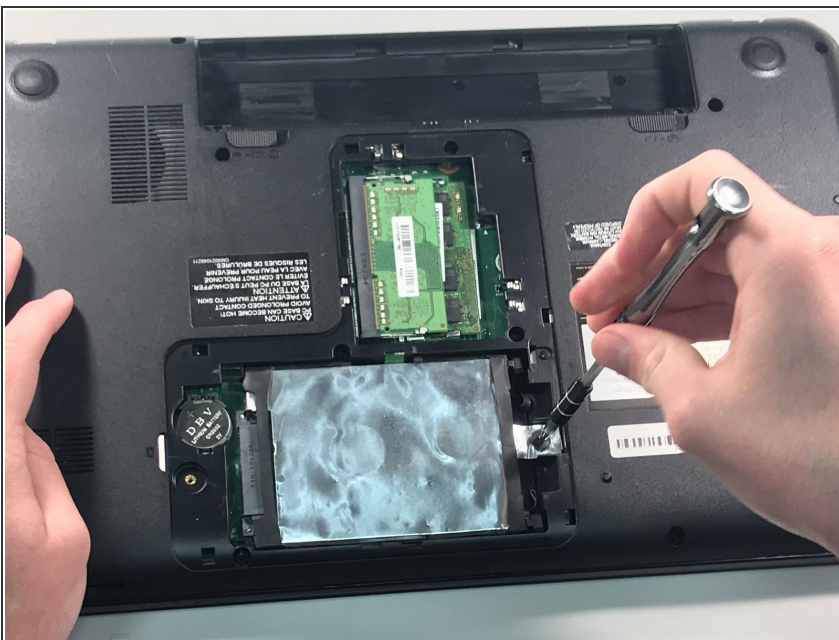
- Lift the battery upward with your fingers out of the battery compartment.

Step 3 — Hard Drive



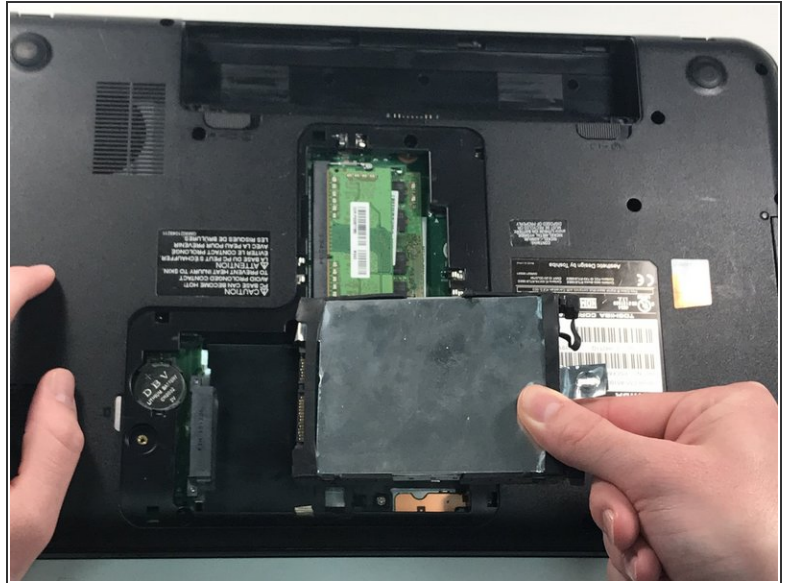
- Place the laptop with the bottom facing up.
- Remove the single 6mm Phillips #1 screw keeping the laptop panels in place.

Step 4



- Using the Phillips #1 screwdriver, remove the 8mm screw that is holding the hard drive in place.

Step 5



- Use your finger to lift the hard drive up.
- Pull out the hard drive to the right.

To reassemble your device, follow these instructions in reverse order.