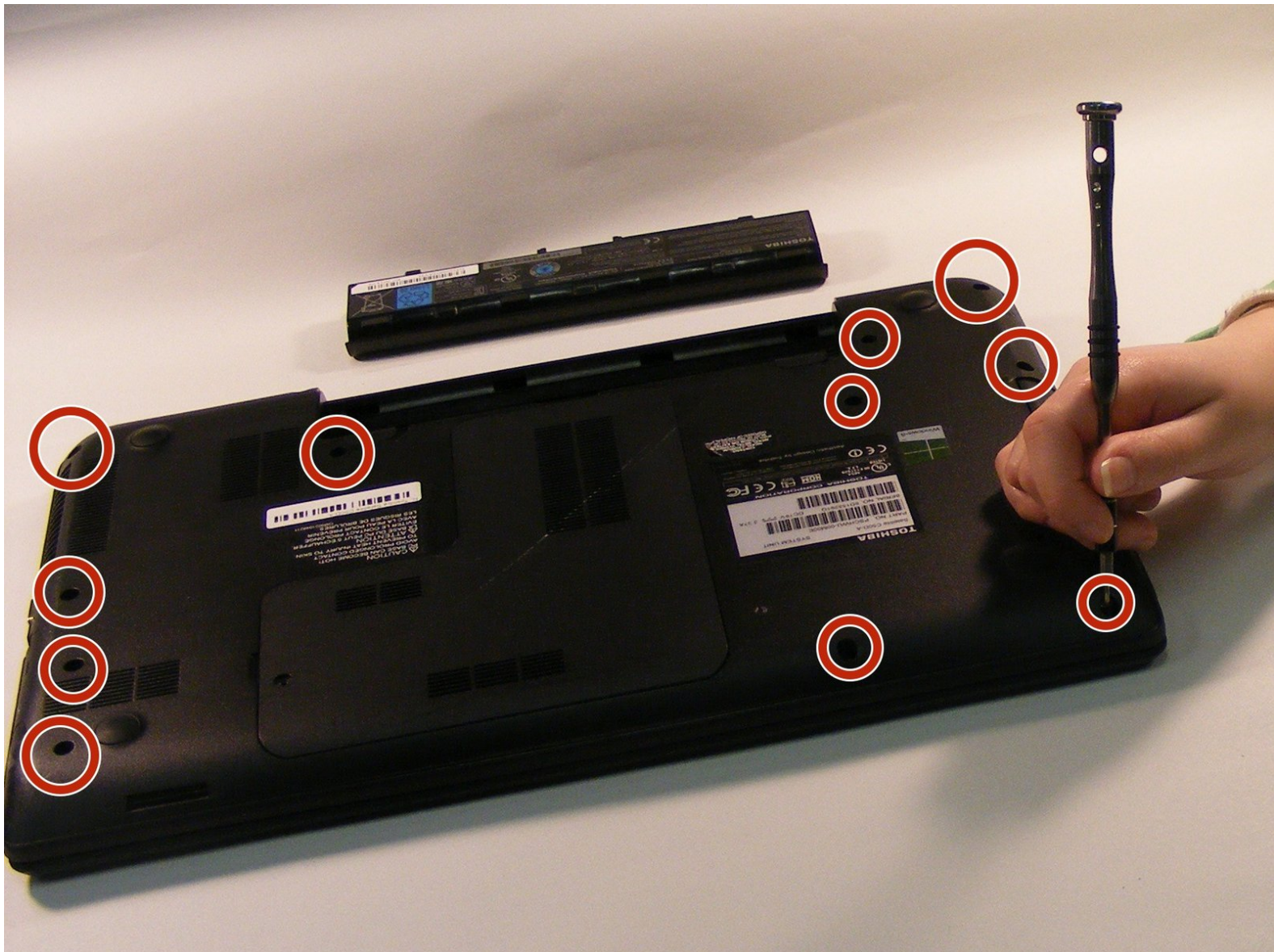




Toshiba Satellite C50D-A Lower Case Replacement

This guide will demonstrate how to remove the lower case of your Toshiba Satellite C50D-A.

Written By: Amber van Solingen



INTRODUCTION

Removing the bottom lower case of your Toshiba Satellite device will allow you to access its inner components, such as the RAM. This will be useful for most repairs.




TOOLS:

- [iFixit Opening Tools](#) (1)
 - [Phillips #1 Screwdriver](#) (1)
-

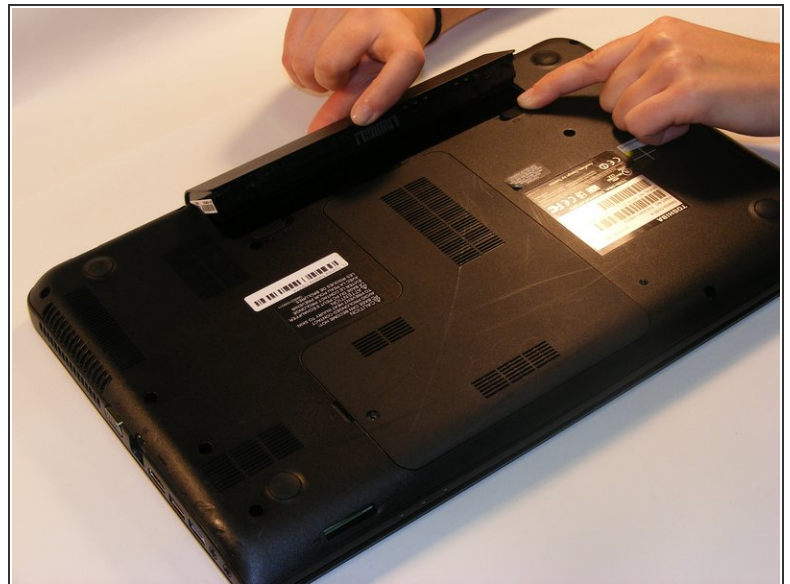
Step 1 — Battery



- Click button 1 to the unlocked position.

 This button will have a 1 by it.

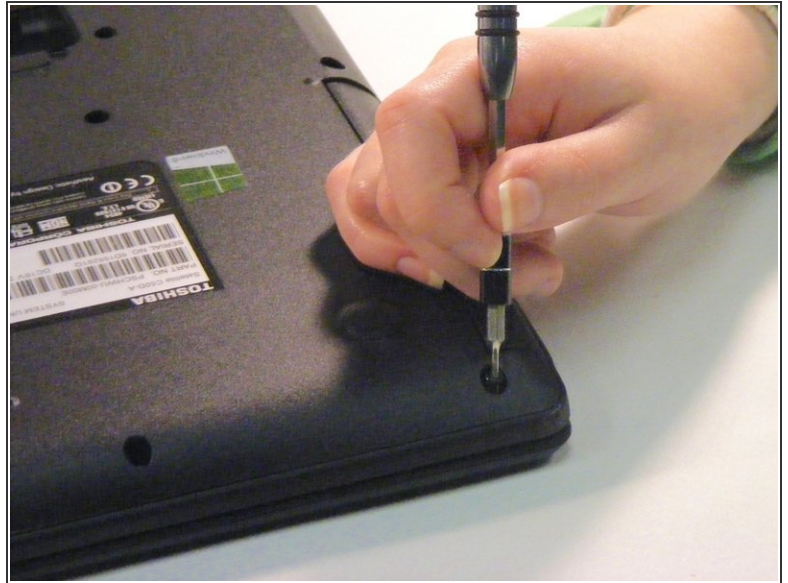
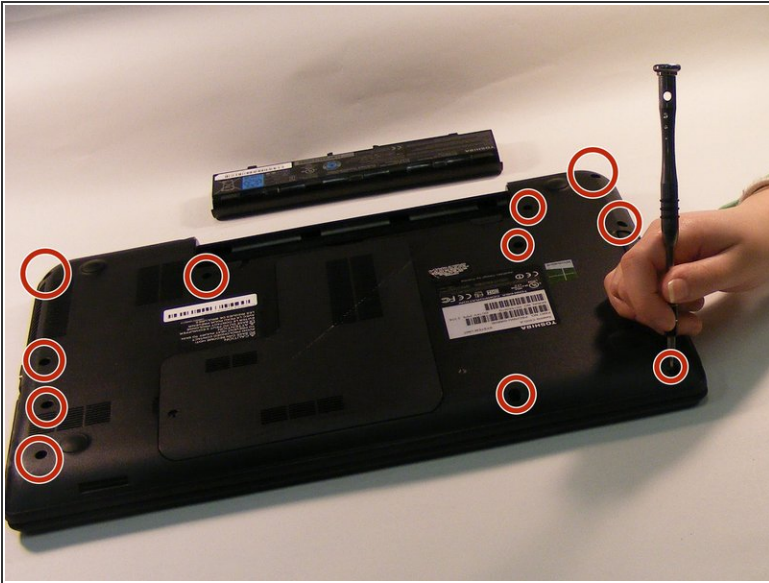
Step 2



- Push and hold button 2 to the left.
- As you push button 2 to the left position, simultaneously lift up the battery pack.

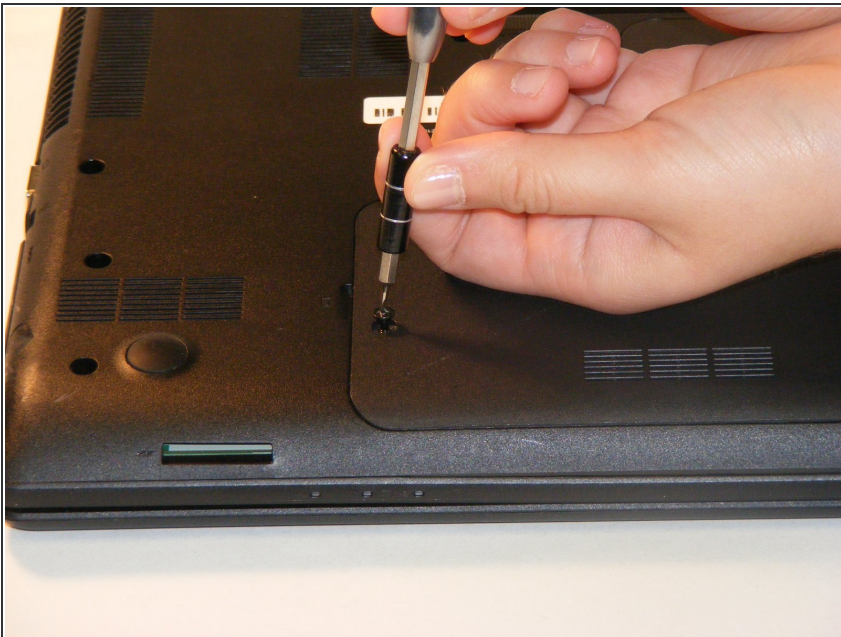
 This button will have a 2 by it.

Step 3 — Lower Case



- Using the Phillips #1 screwdriver, remove the eleven 2.5mm screws.

Step 4



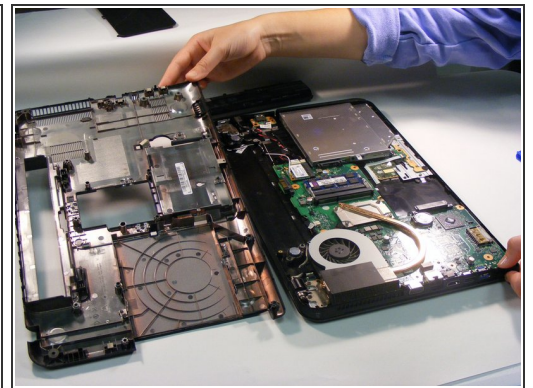
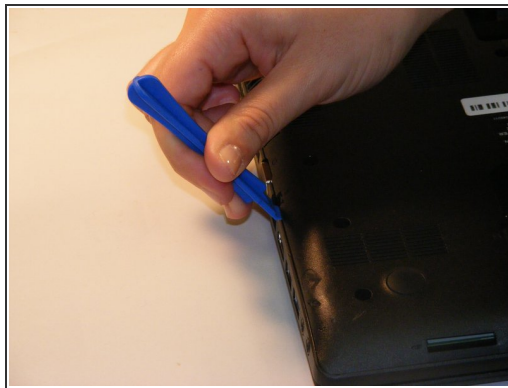
- Remove the one 2.5mm Phillips #1 middle plate screw.

Step 5



- Lift up the middle vent panel.
- Set the panel to the side.

Step 6



- Using the plastic opening tool, remove the outer panel and set to the side.

⚠ Be careful not to break the back of the computer.

To reassemble your device, follow these instructions in reverse order.