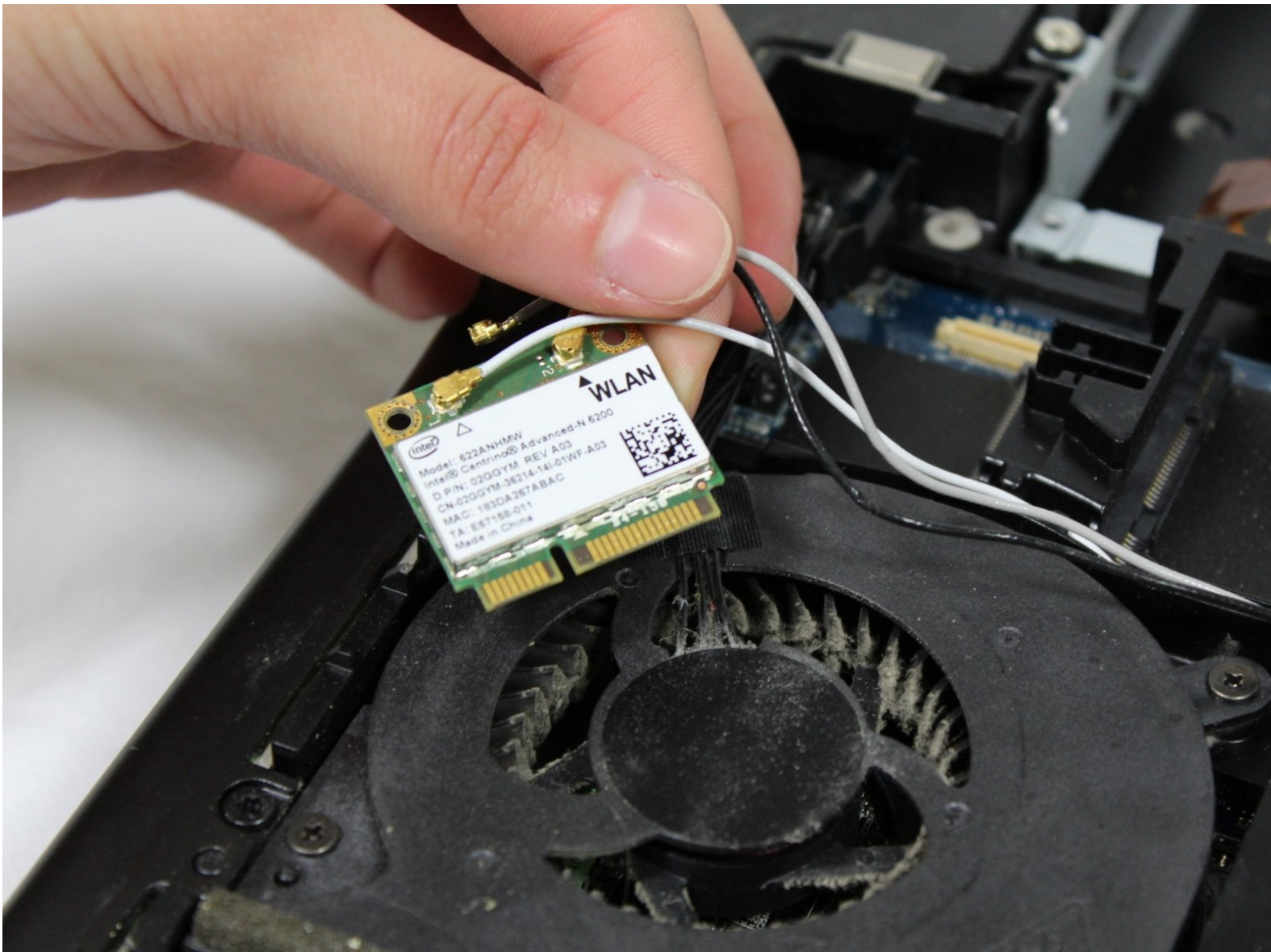




# Alienware M18x WiFi Card Replacement

This guide will teach you how to replace your laptop's WiFi card.

Written By: Rachel Greenberg



---

## INTRODUCTION

This guide shows how to replace the WiFi card on an Alienware M18x.



### TOOLS:

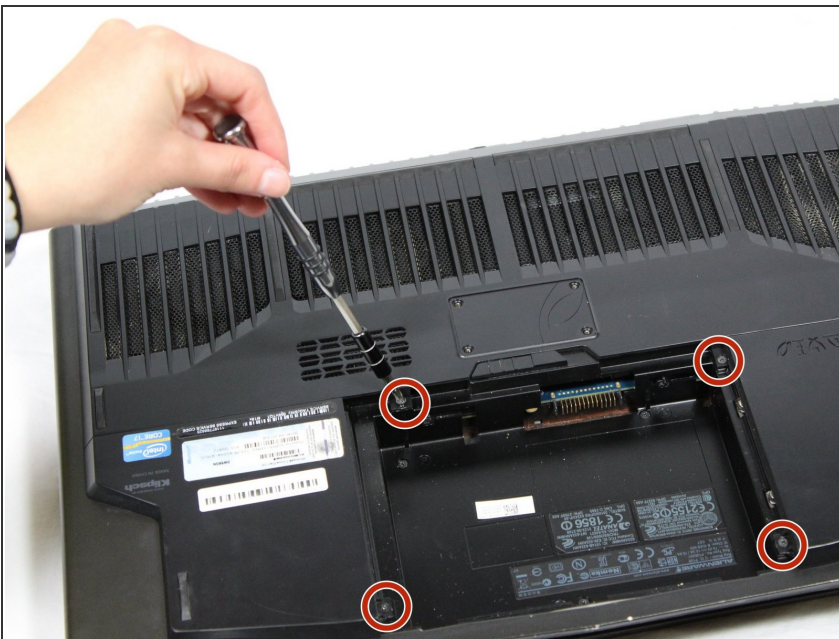
- [JIS #00 Screwdriver](#) (1)
  - [JIS #000 Screwdriver](#) (1)
-

## Step 1 — WiFi Card



- Turn your computer over.
- Slide bar over and lift battery out.

## Step 2



- Unscrew the four screws with a J000 screwdriver.

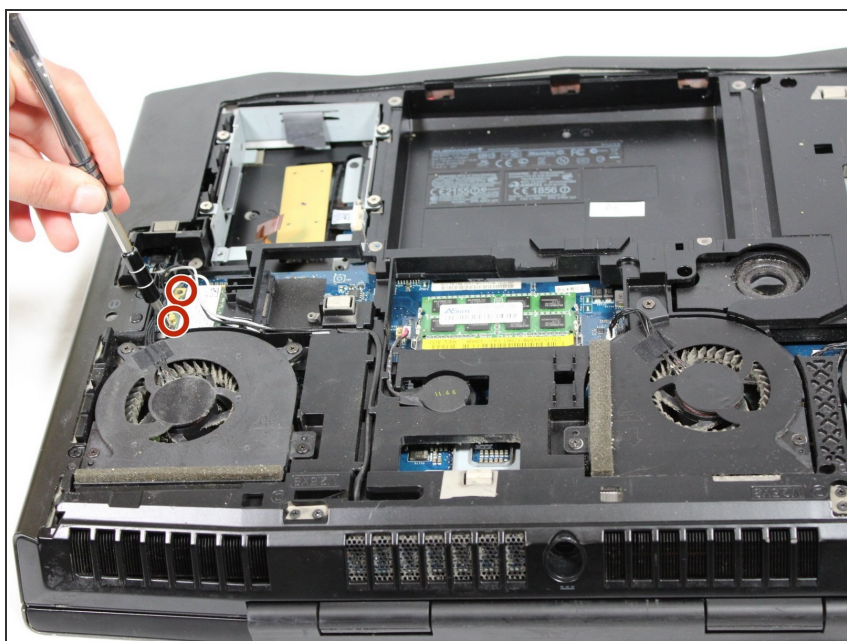


## Step 3



- Use the plastic pryer tool to lift the bottom cover off.

## Step 4



- Unscrew the two screws with a J00 screwdriver.

## Step 5



- Pull the WiFi card out.
- Disconnect the black and white antenna cables.

To reassemble your device, follow these instructions in reverse order.