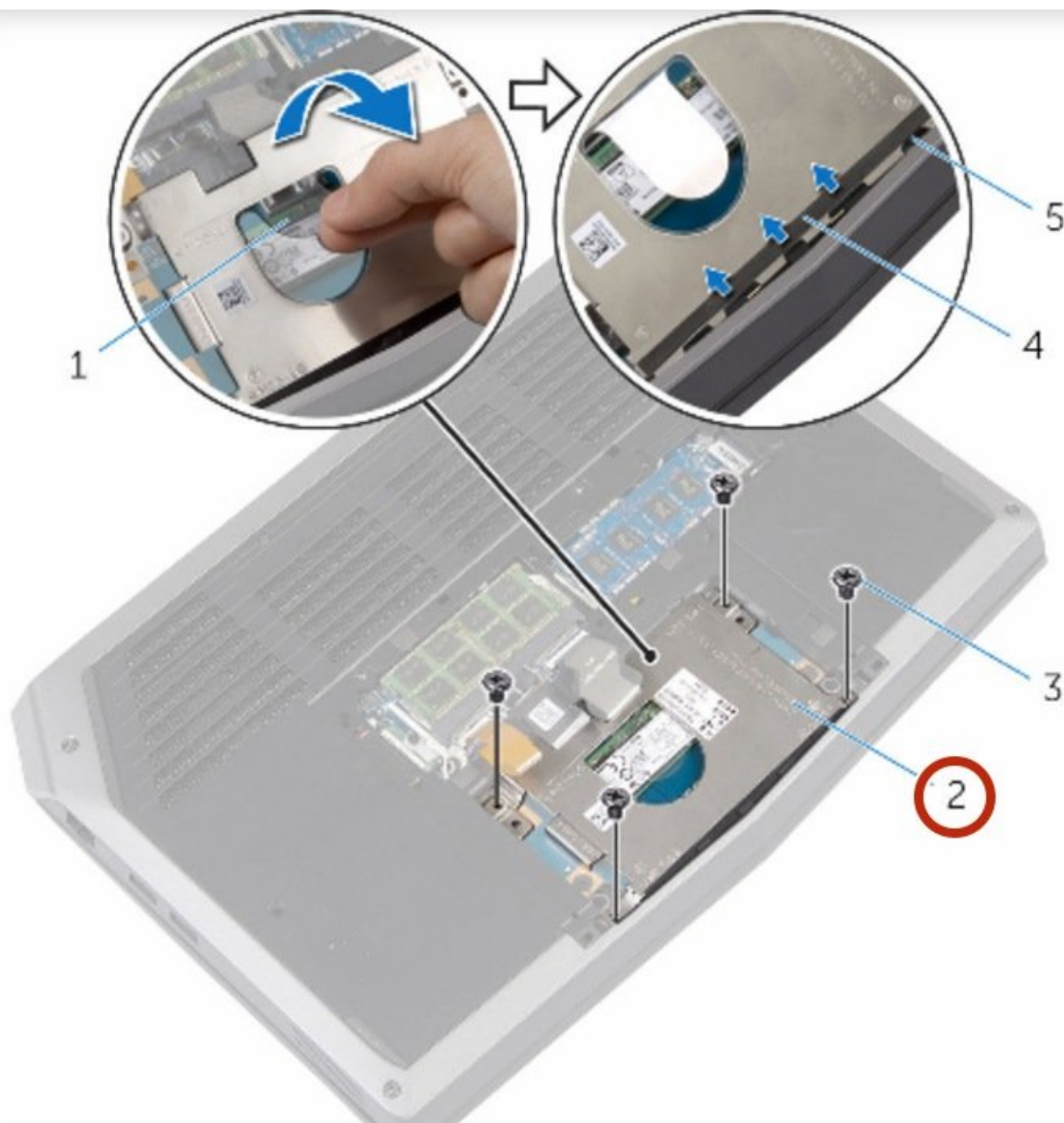




# Dell Alienware 13 R2 Solid-State Drive Replacement

Dell Alienware 13 R2 Solid-State Drive Replacement

Written By: Terrence15



---

## INTRODUCTION

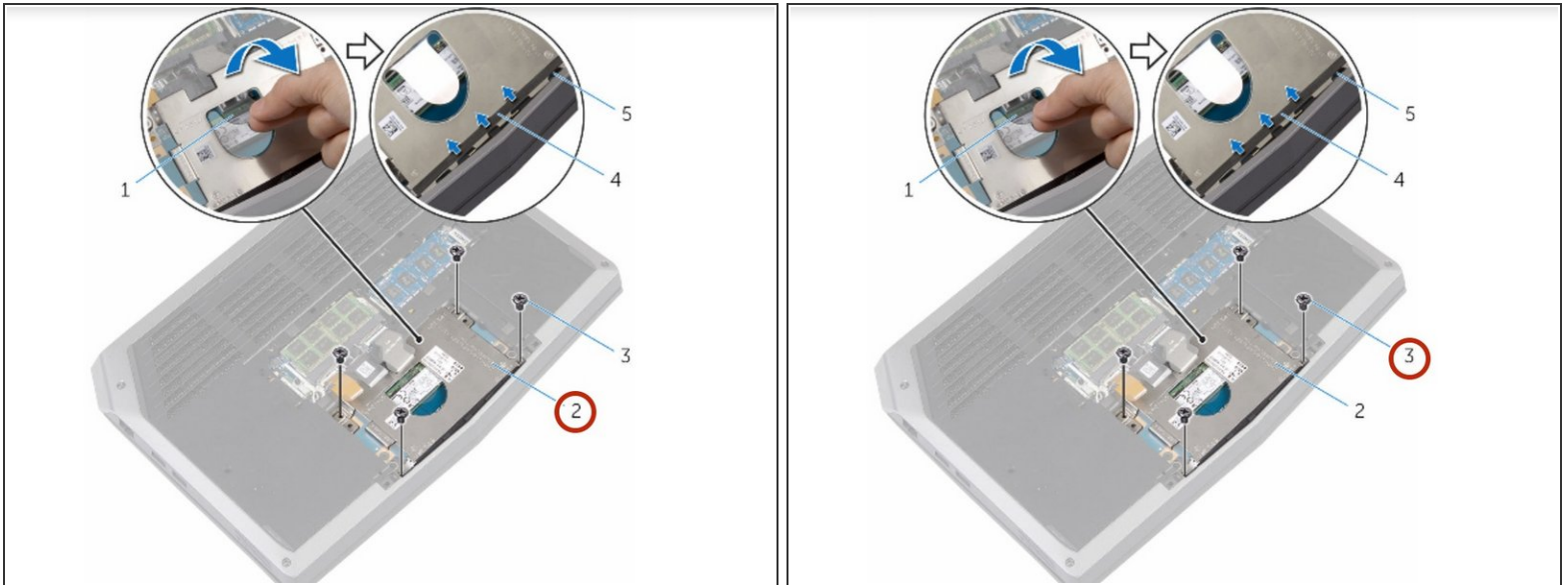
In this guide, we will be removing and replacing the solid-state drive.



### TOOLS:

- [Phillips #0 Screwdriver](#) (1)
-

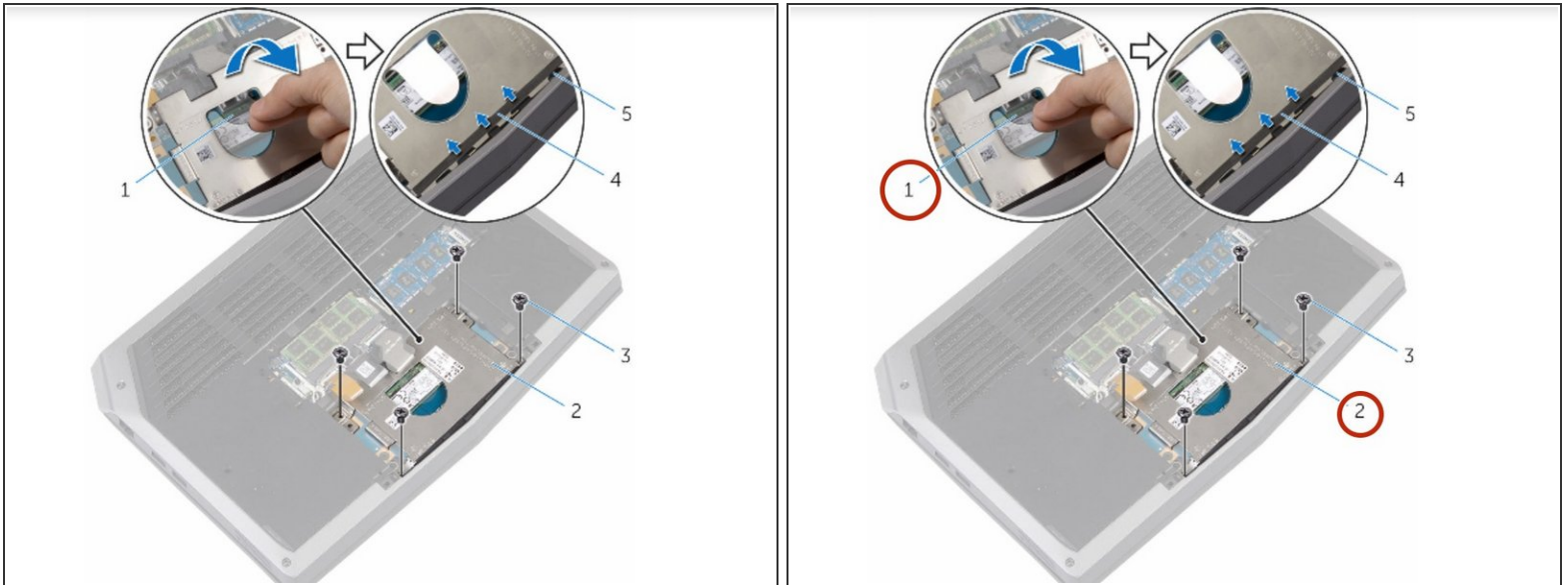
## Step 1 — Removing the Screws



**⚠ WARNING:** Before working inside your computer, read the safety information that shipped with your computer and follow the steps in [Before Working Inside Your Computer](#). After working inside your computer, follow the instructions in [After Working Inside Your Computer](#).

- Remove the screws that secure the solid-state drive bracket to the solid-state drive assembly.

## Step 2 — Peel off Computer Base Tabs



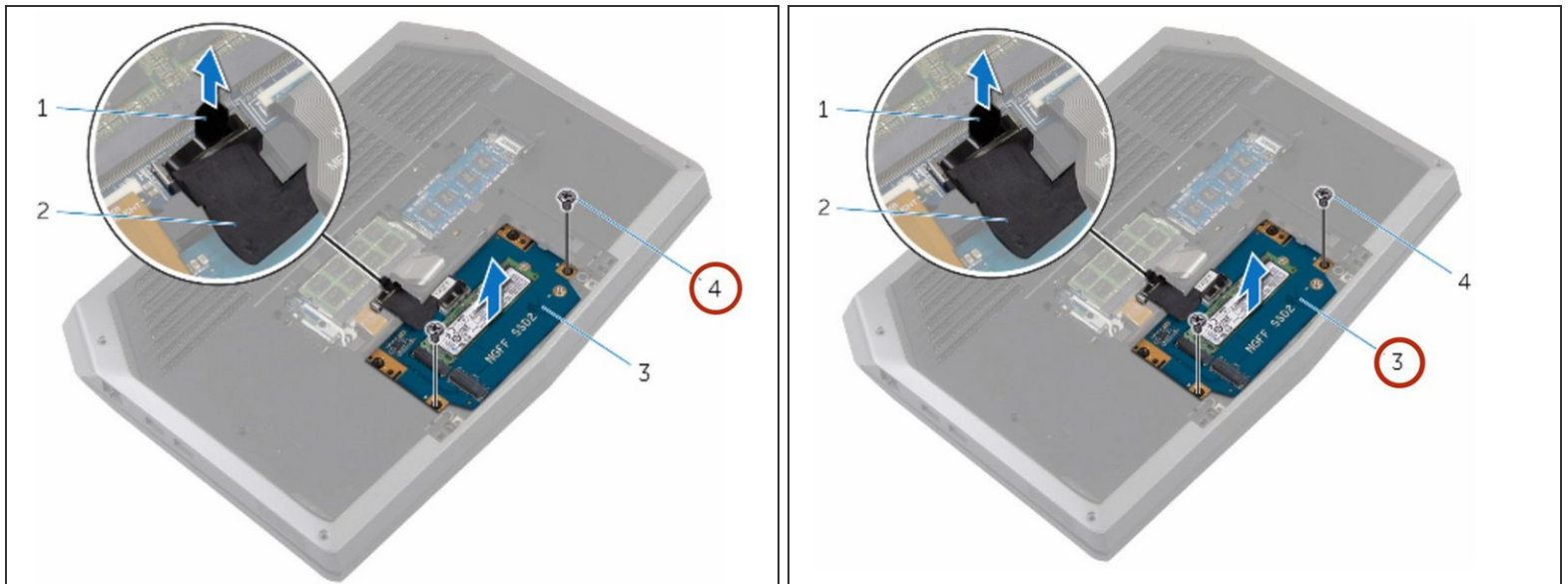
- Using the pull tab, pivot the solid-state drive bracket and peel off the bracket from the tabs on the computer base.

## Step 3 — Disconnecting the Solid-State Drive Cable



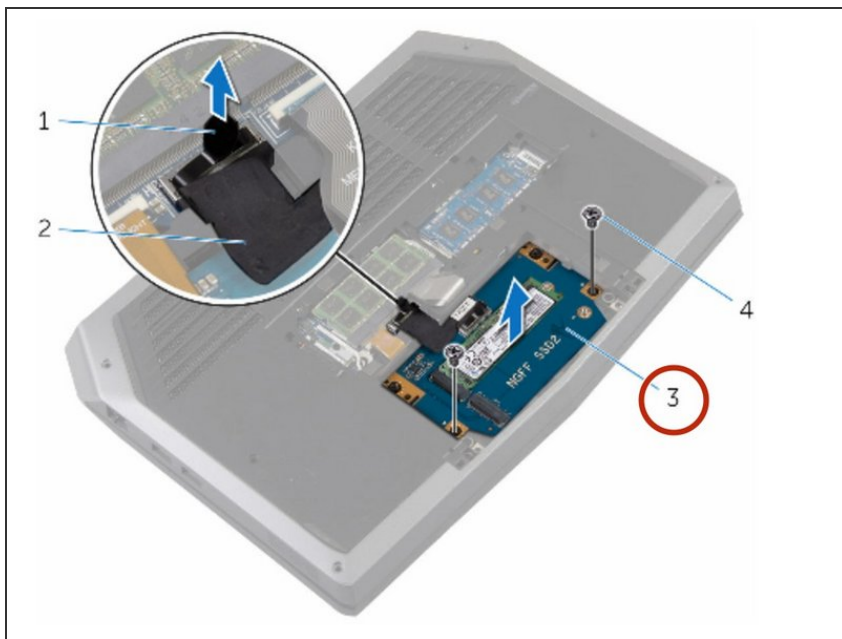
- Using the pull tab, disconnect the solid-state drive cable from the system board.

## Step 4 — Removing the Solid-State Drive



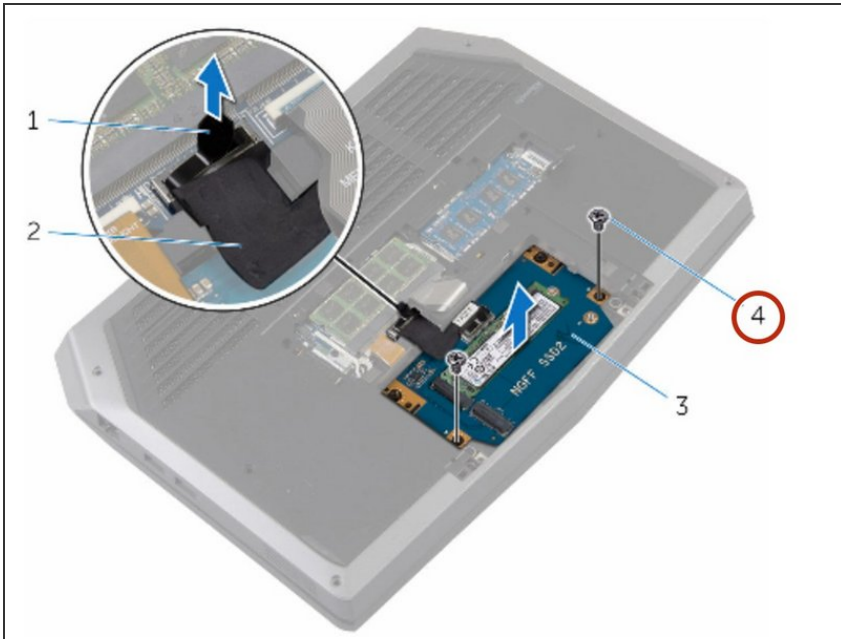
- Remove the screws that secure the solid-state drive assembly to the computer base.

## Step 5 — Lifting the Solid-State Assembly



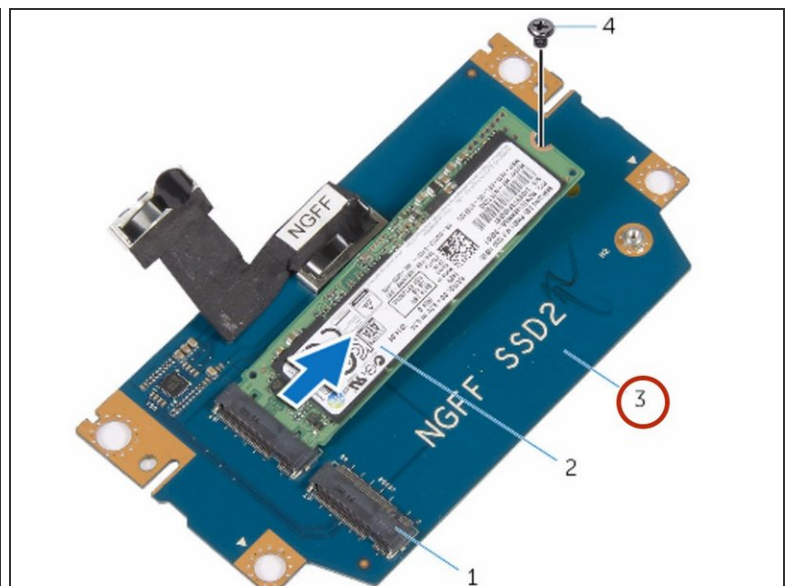
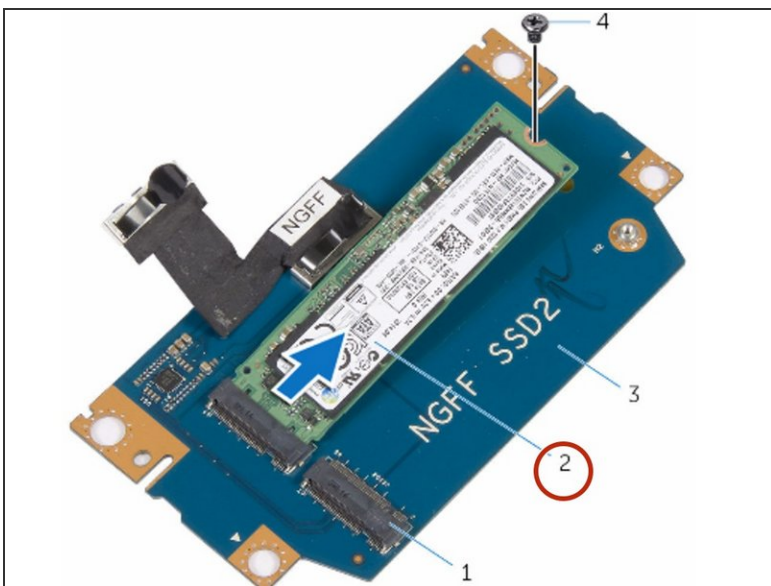
- Lift the solid-state drive assembly off the computer base.

## Step 6 — Remove the Screw



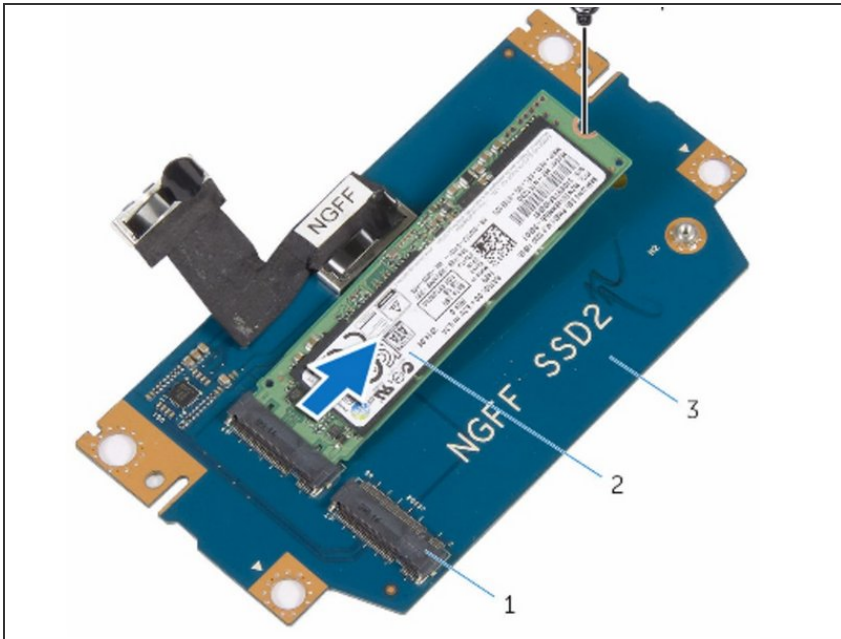
- Remove the screw that secures the solid-state drive to the solid-state drive assembly.

## Step 7 — Lift the Solid-State Assembly.



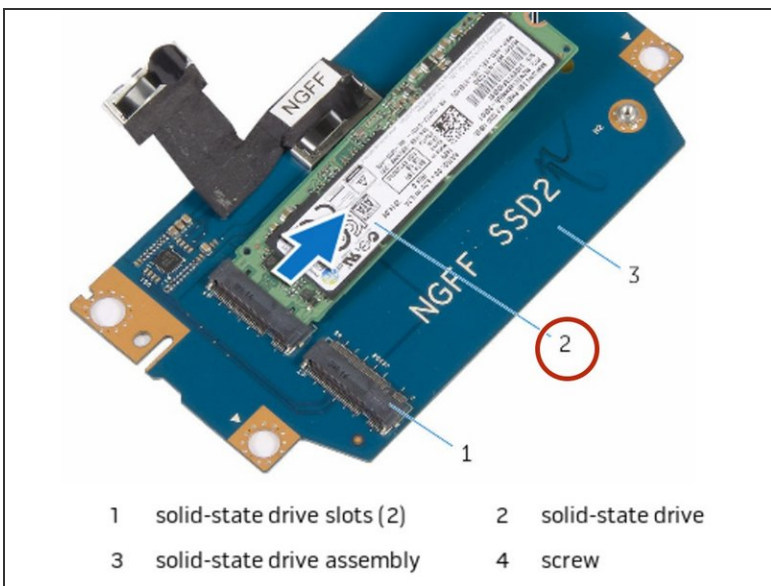
- Slide and lift the solid-state drive off the solid-state drive assembly.

## Step 8 — The New Solid-State Drive

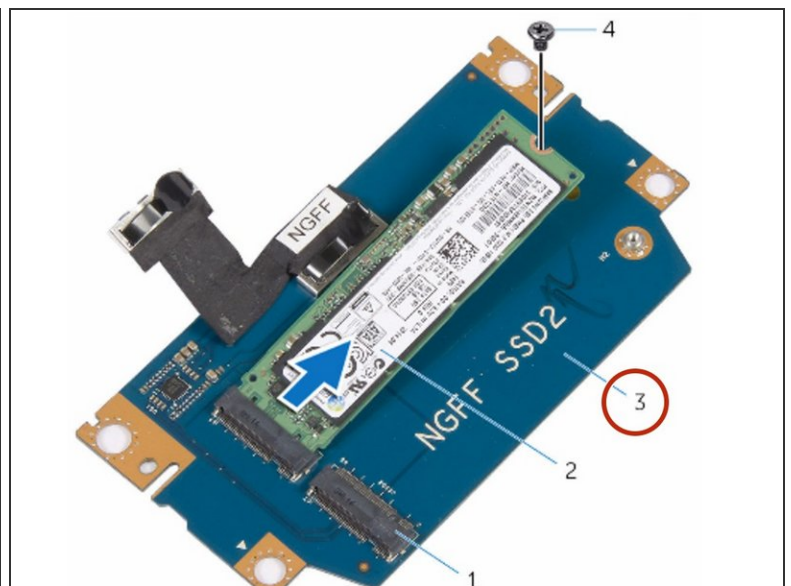


- Slide the **NEW** solid-state drive into the slot on the solid-state drive assembly.

## Step 9 — Screw Replacement

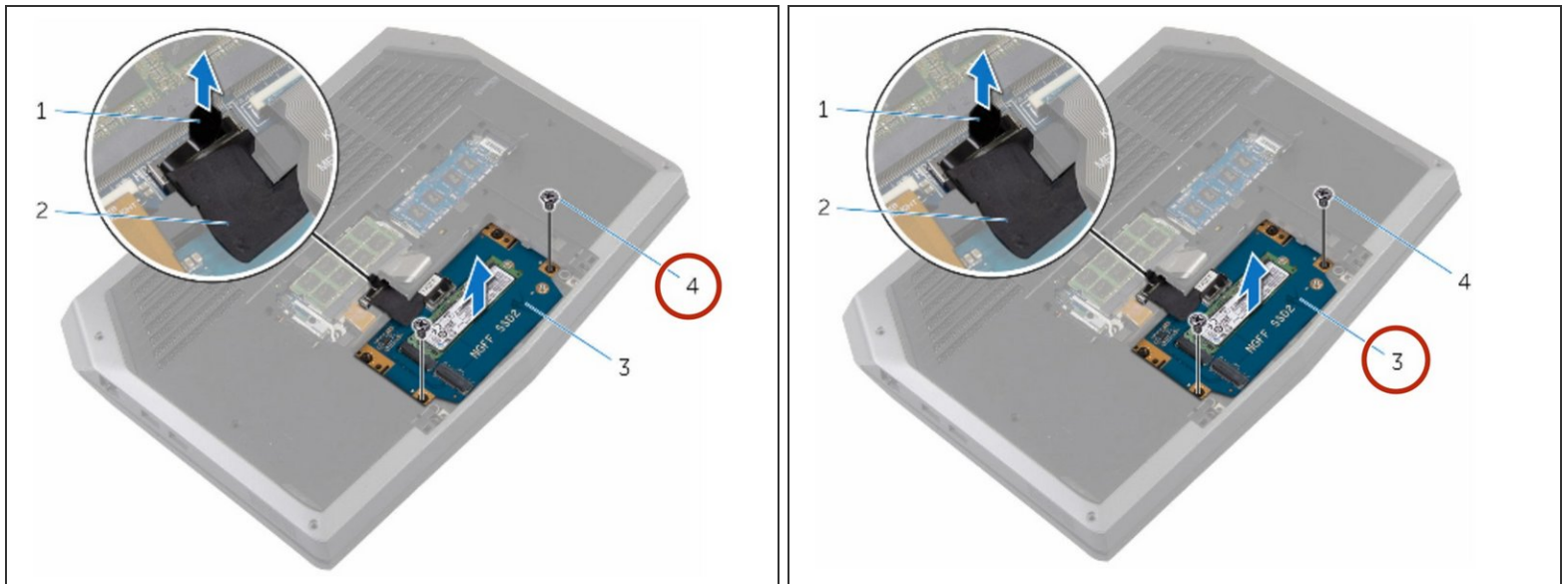


- |   |                             |   |                   |
|---|-----------------------------|---|-------------------|
| 1 | solid-state drive slots (2) | 2 | solid-state drive |
| 3 | solid-state drive assembly  | 4 | screw             |



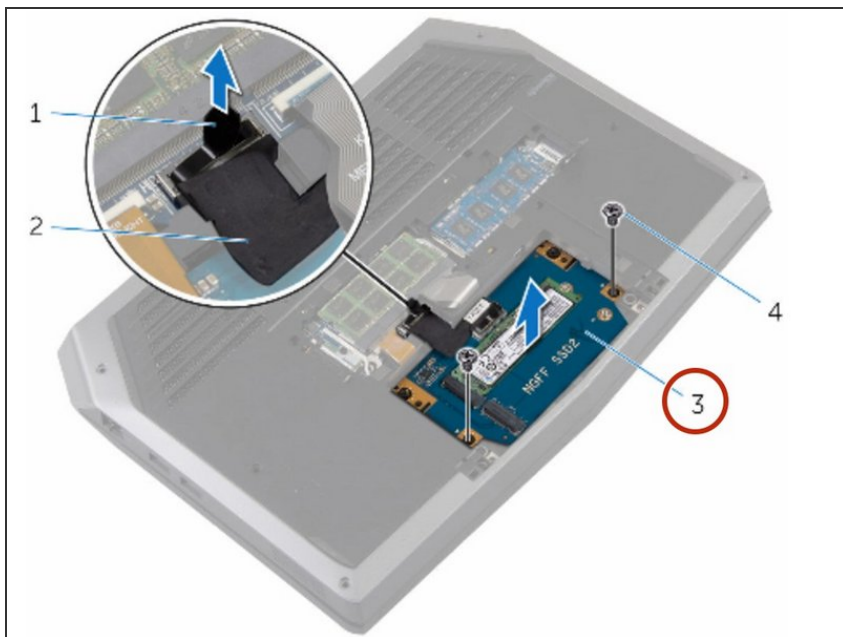
- Replace the screw that secures the solid-state drive to the solid-state drive assembly.

## Step 10 — Align the Screws



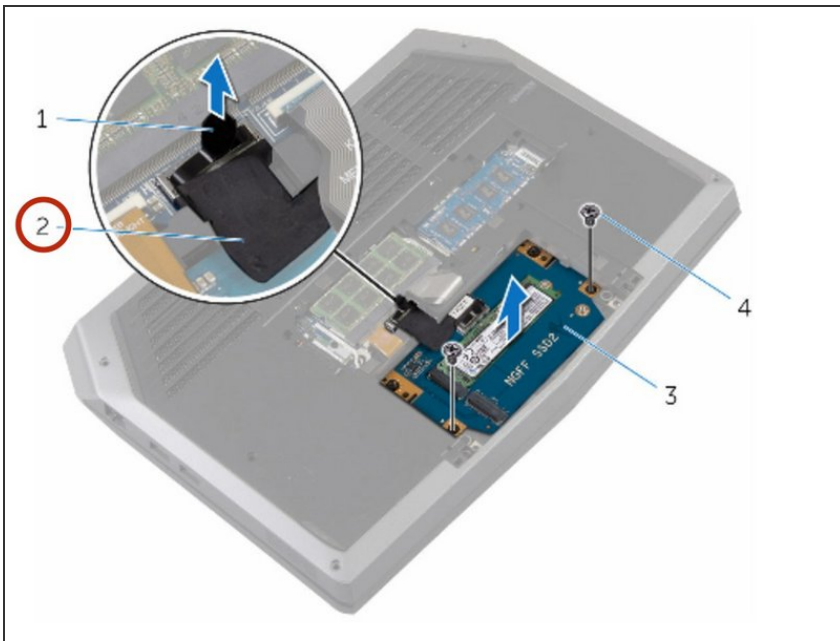
- Align the screw holes on the solid-state drive assembly with the screw holes on the computer base.

## Step 11 — Replace the Screws



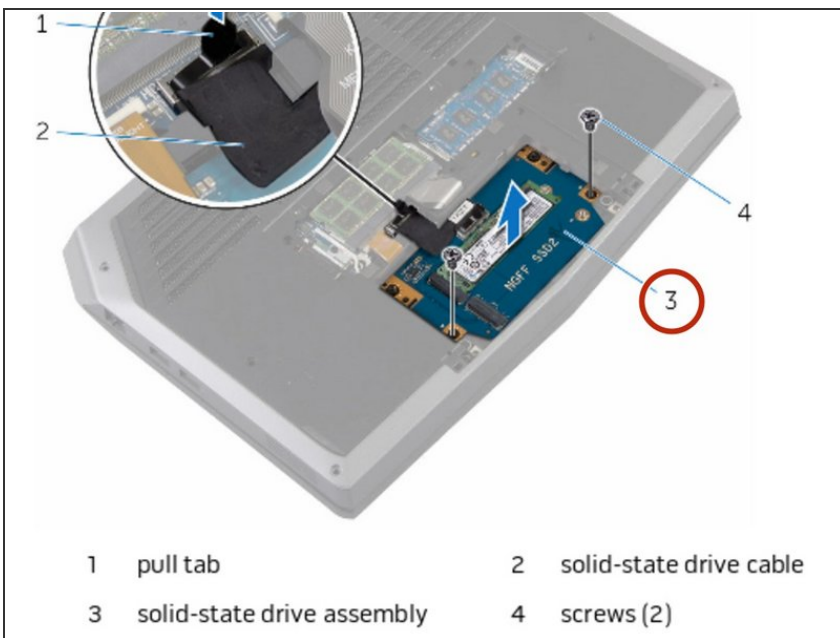
- Replace the screws that secure the solid-state drive assembly to the computer base.

## Step 12 — Connect the Cable to the System Board



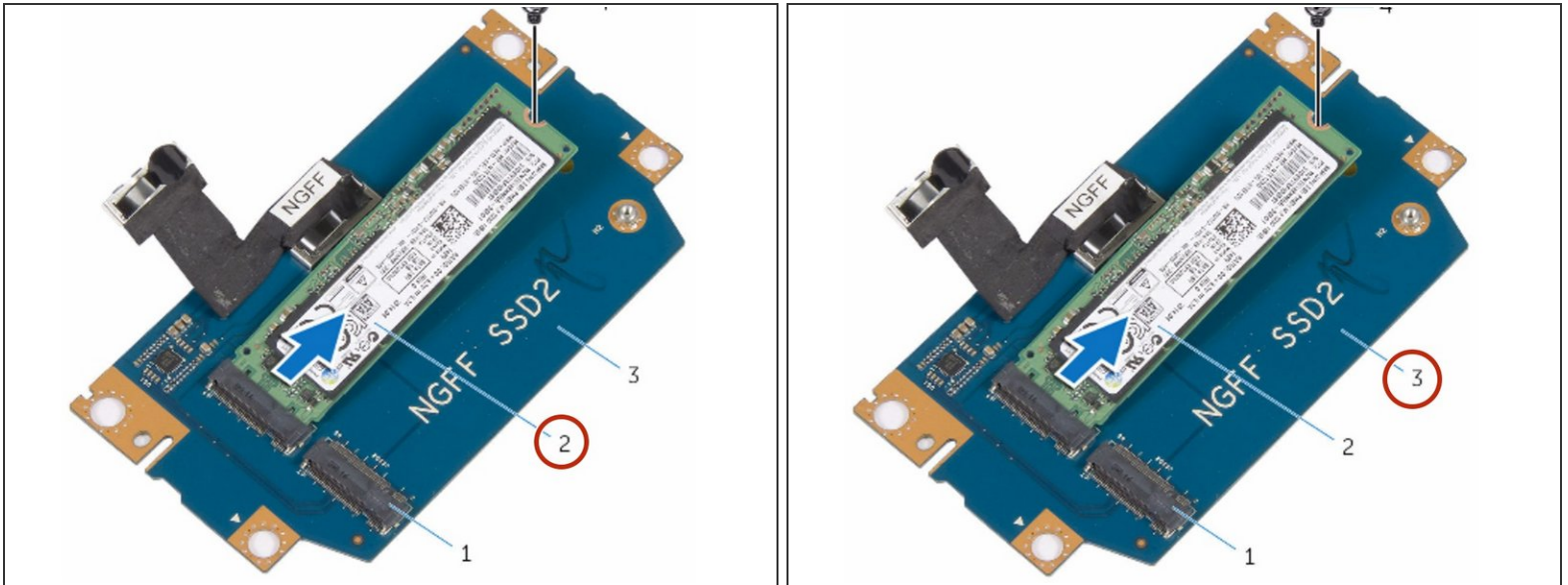
- Connect the solid-state drive cable to the system board.

## Step 13 — Align the Screw Holes



- Align the screw holes on the solid-state drive bracket with the screw holes on the solid-state drive assembly.

## Step 14 — Replace the Screws



- Replace the screws that secure the solid-state drive bracket to the solid-state drive assembly.

To reassemble your device, follow these instructions in reverse order.