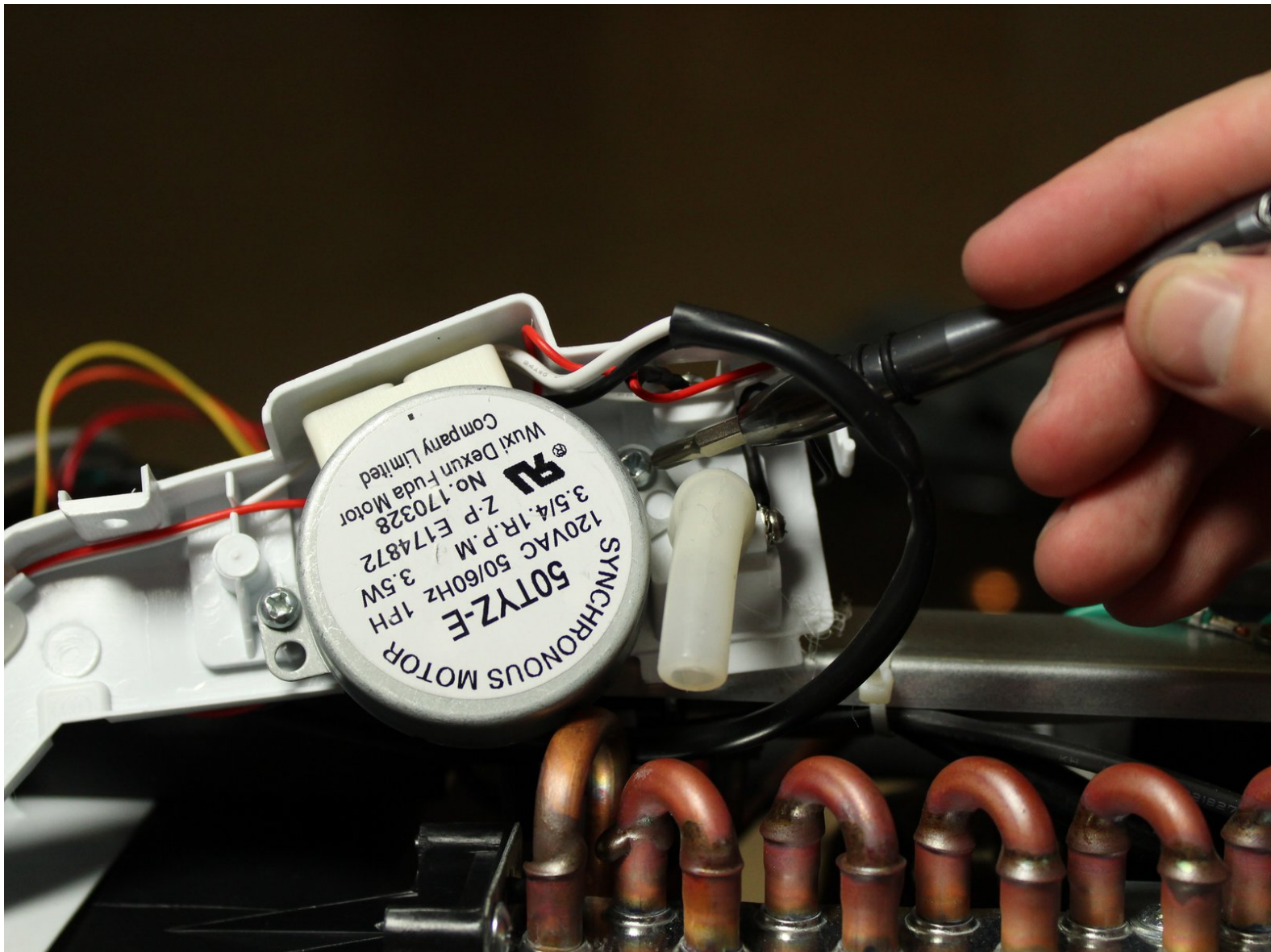




# Insignia Ice Maker NS-IMP26SS7 Water Pump Replacement

Replace broken Water Pump on Insignia Ice Maker

Written By: Evan Taylor



## INTRODUCTION

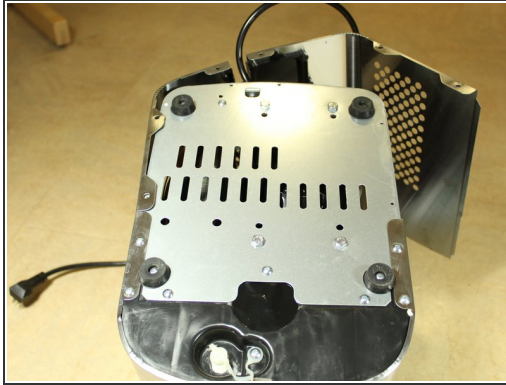
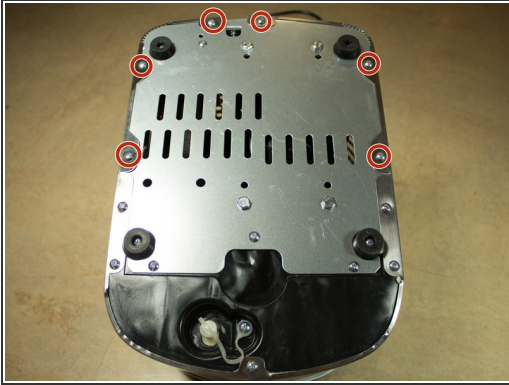
This guide will show how to remove the Water Pump on an Insignia Ice maker. The Ice Tray replacement guide is required to begin disassembling the Water Pump.



### TOOLS:

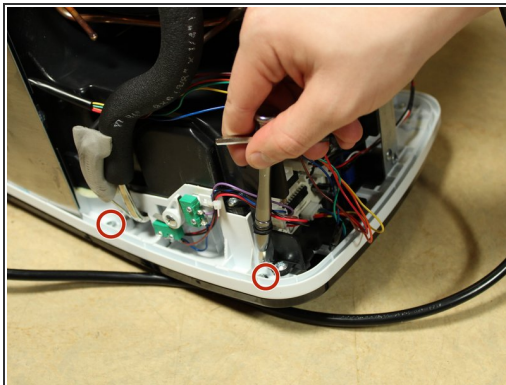
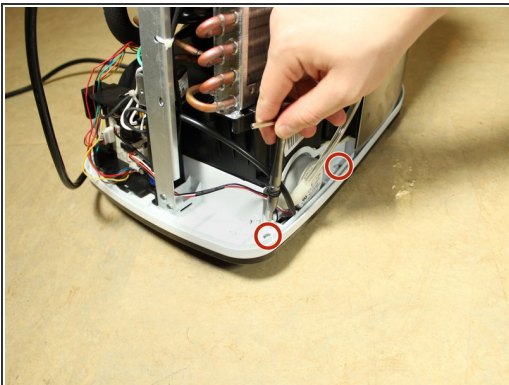
- [Phillips #3 Screwdriver](#) (1)
  - [iFixit Opening Tools](#) (1)
  - [Utility Scissors](#) (1)
  - [iFixit Tech Knife](#) (1)
-

## Step 1 — Water Tray



- Remove the 6 screws holding the rear casing on.
- Remove the rear casing

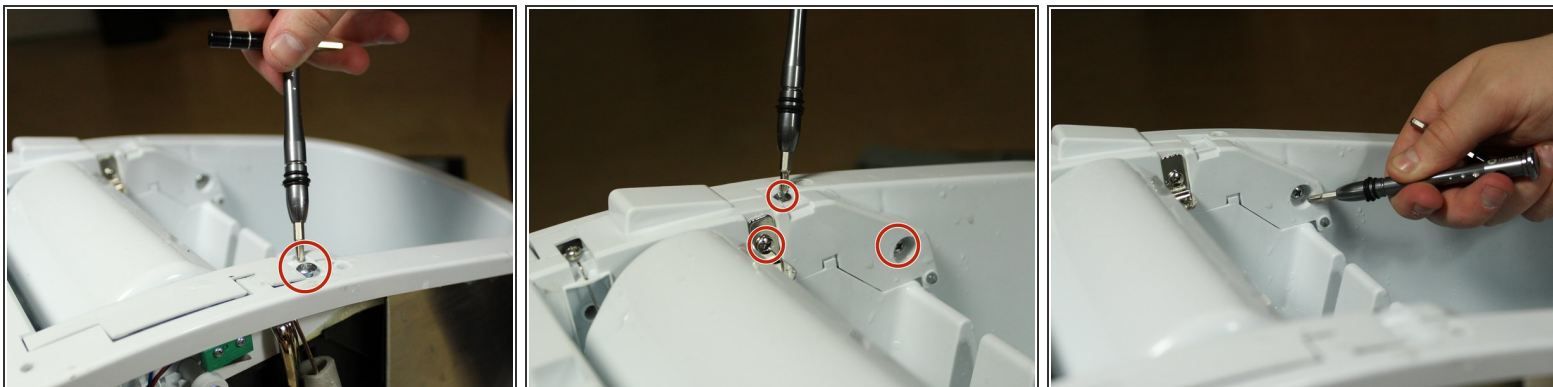
## Step 2



- Remove the 4 screws holding the Ice Tray to the body of the Ice Maker.

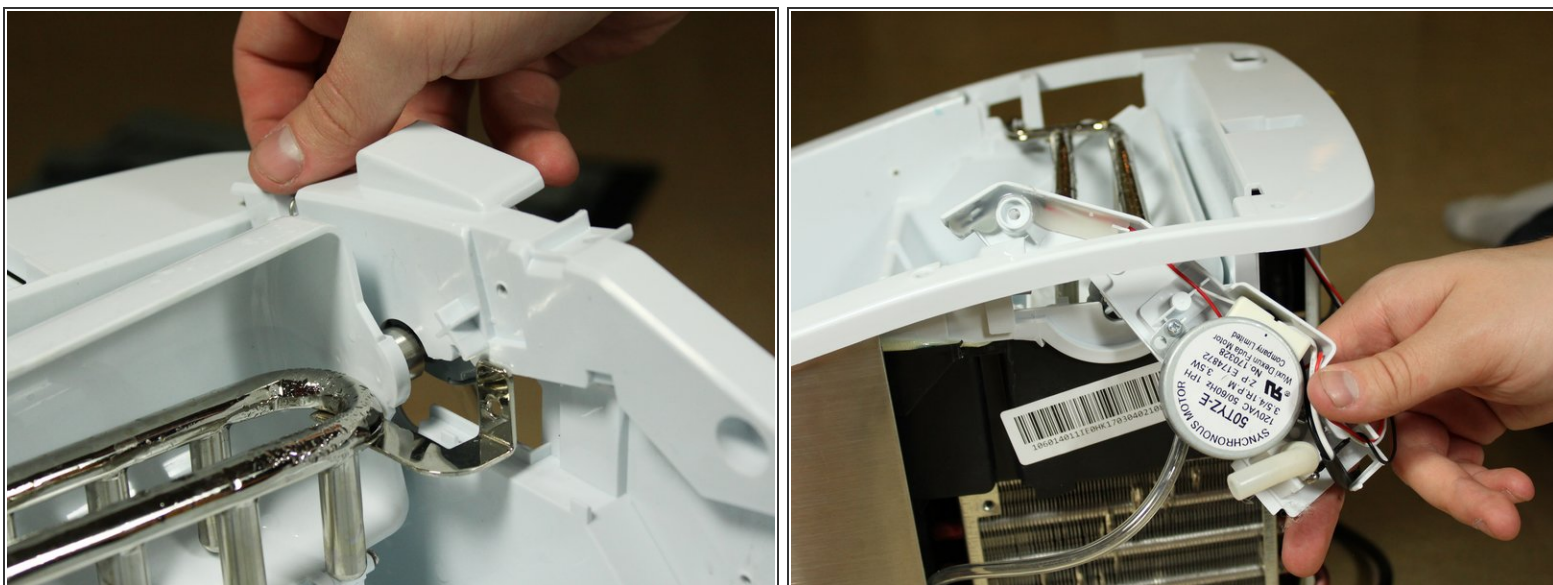


### Step 3



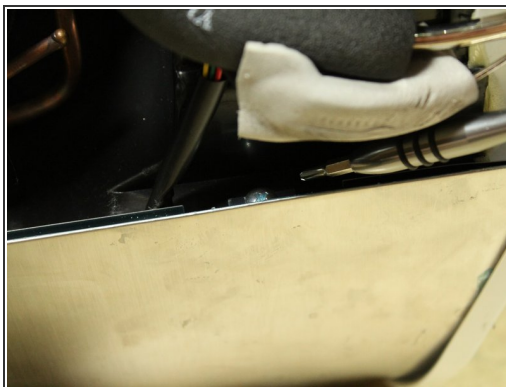
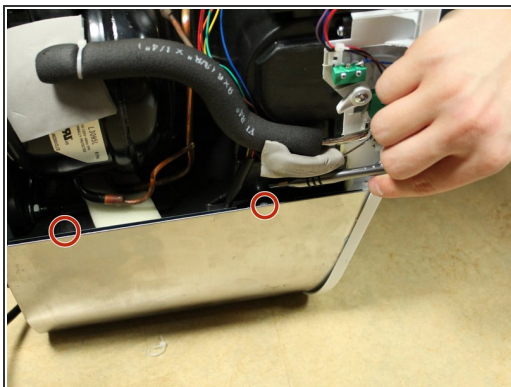
- Remove the 4 screws holding the Ice Tray from the top.

### Step 4



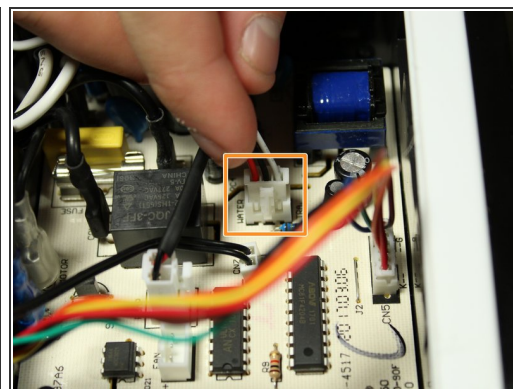
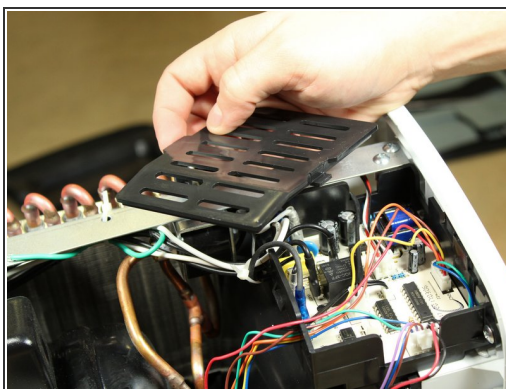
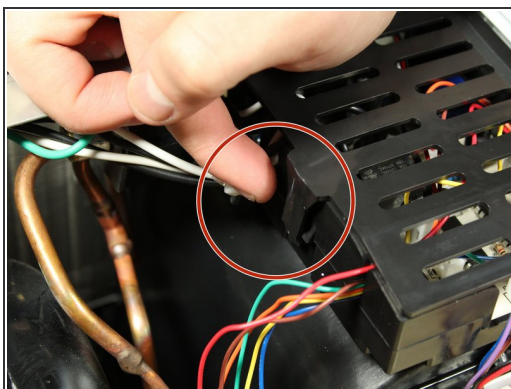
- Lift the Water Pump out of the way

## Step 5



- Remove the final 2 screws.

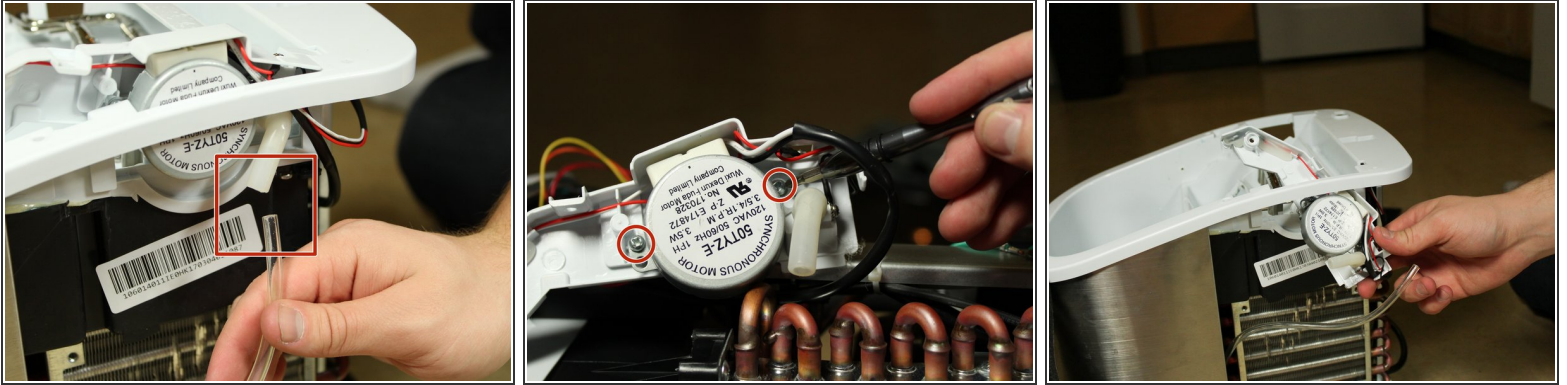
## Step 6



- Remove the plastic cover from the circuit board by pressing the lever on the side. A pry tool may be required.
- Disconnect the water tray cord.

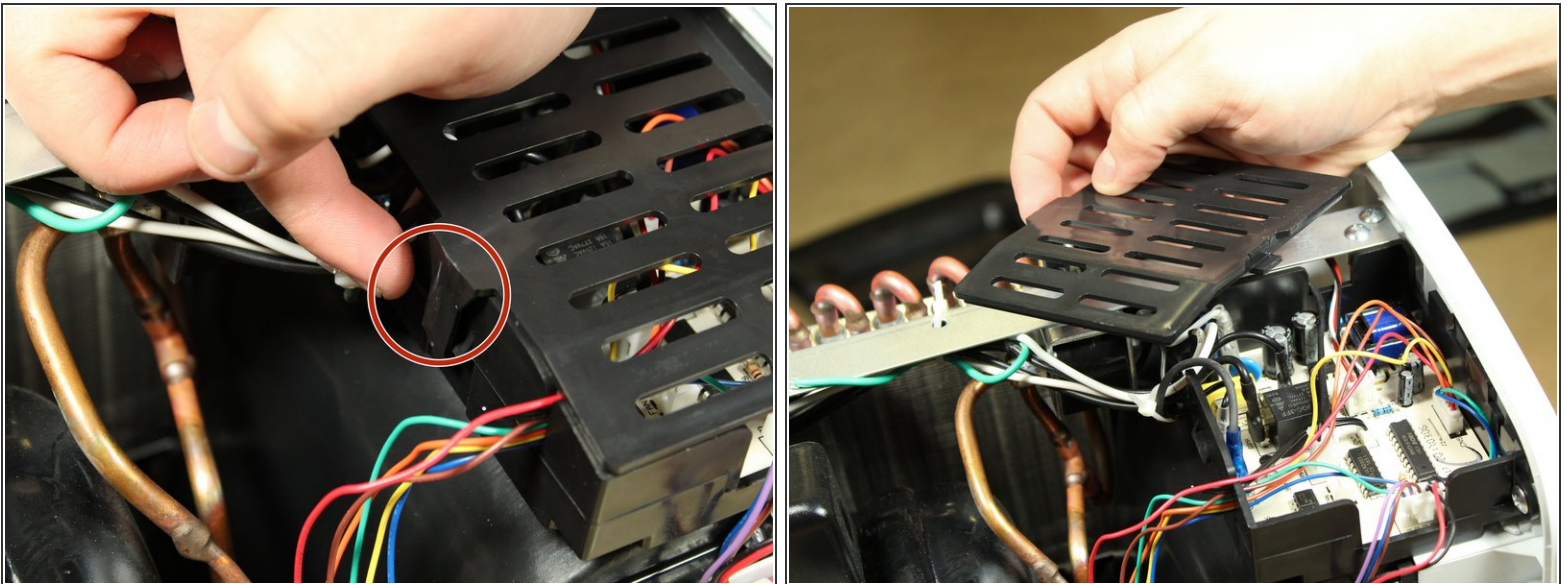


## Step 7 — Water Pump



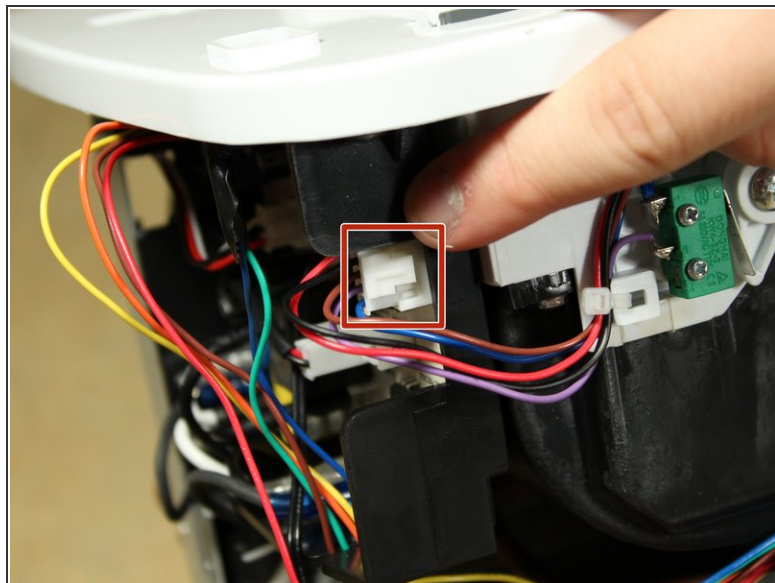
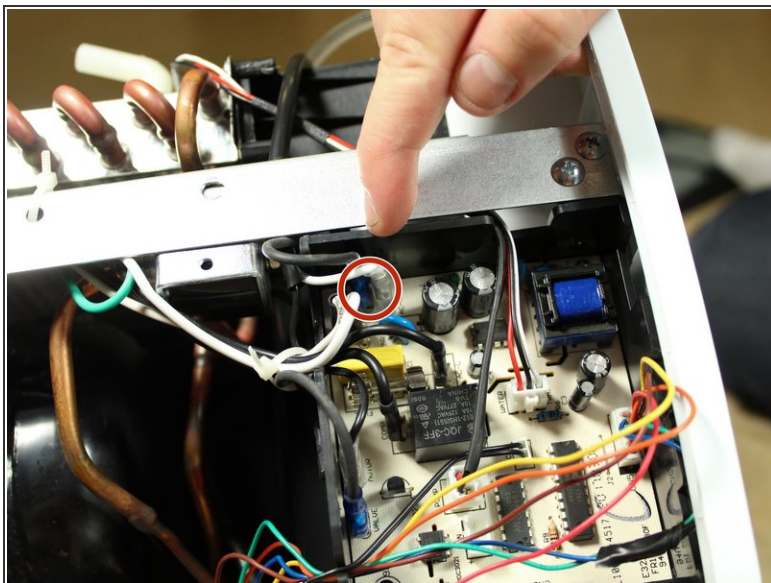
- Disconnect the water hose
- Remove the 2 screws holding the pump to the Ice Tray attachment.

## Step 8



- Remove the plastic covering over the circuit board by pressing against the latch on one side. A prying tool may be needed.

## Step 9



- Disconnect the power supply as well as the control cables from the circuit board.
- You may have to cut through some electrical tape to free the wires.

To reassemble your device, follow these instructions in reverse order.