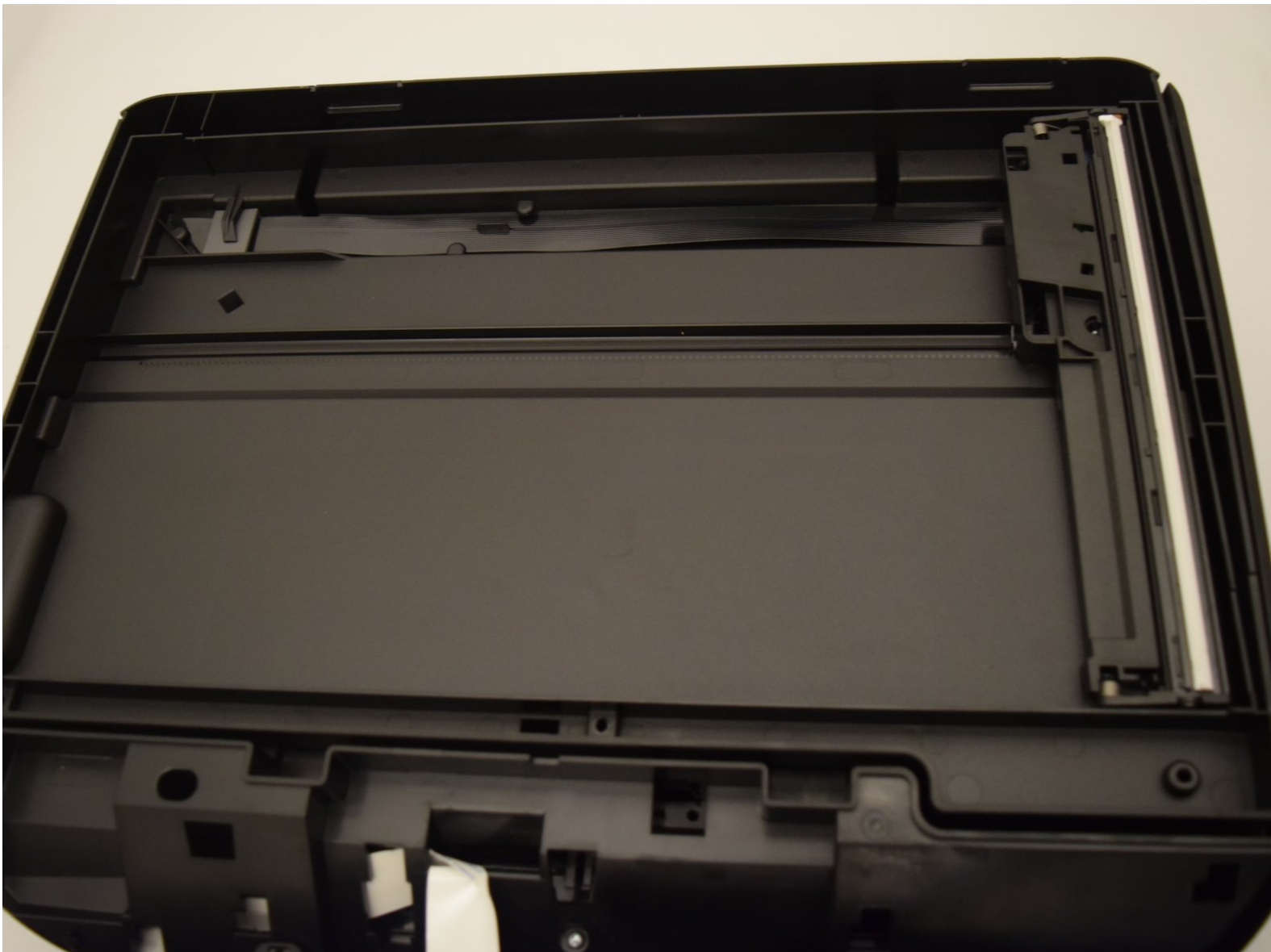




HP Envy 5660 Scanner Piece Replacement

How to replace the scanner piece for the HP Envy 5660.

Written By: Ryan Steakley



INTRODUCTION

The scanner piece is a part of the printer that scans over a paper. It may become misaligned or damaged over time. This guide will help a user replace the scanning piece.

TOOLS:

- [T10 Torx Screwdriver](#) (1)
 - [iFixit Opening Tools](#) (1)
 - [Metal Spudger](#) (1)
-

Step 1 — Scanner Glass



- Open the cartridge access area.

Step 2



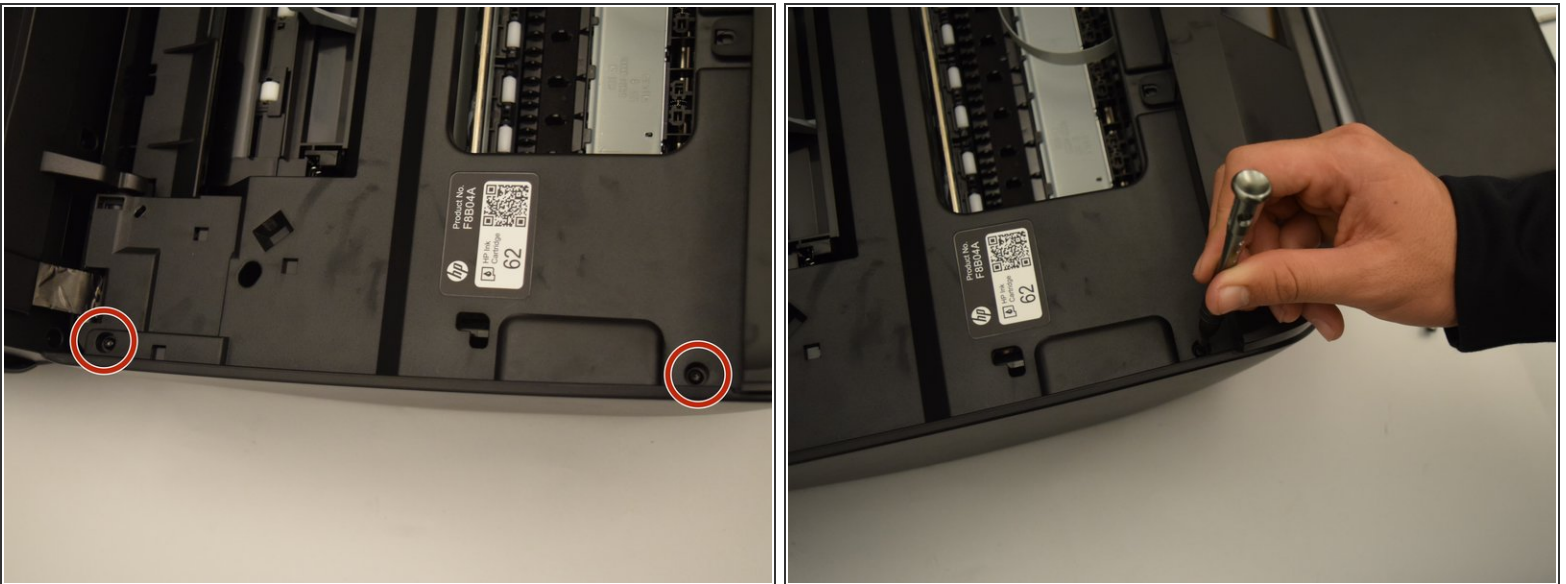
- Remove the three 11.5 mm screws with a T10 bit.

Step 3



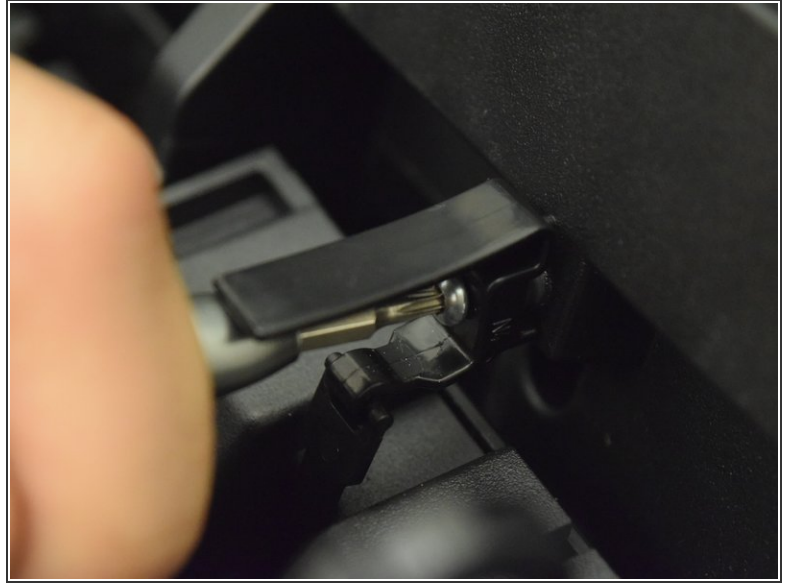
- Locate the cover hinge on the right side of the printer.
- Pull the hinge off of the scanner to allow the scanner to open to 90 degrees.

Step 4



- Remove the 12 mm screws on the left side of the printer with a T10 bit.

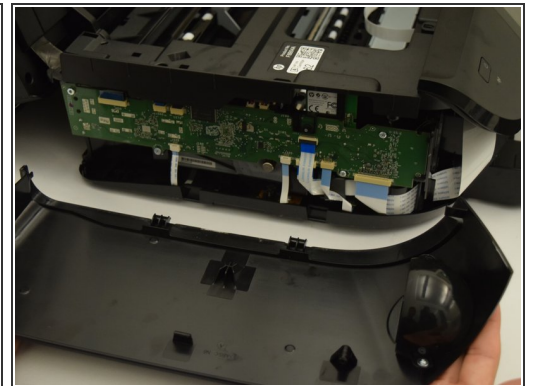
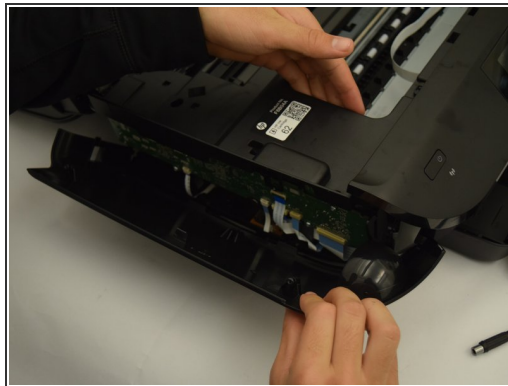
Step 5



- Remove the 11.5 mm screw with a T10 bit to release the spring-loaded hinge.

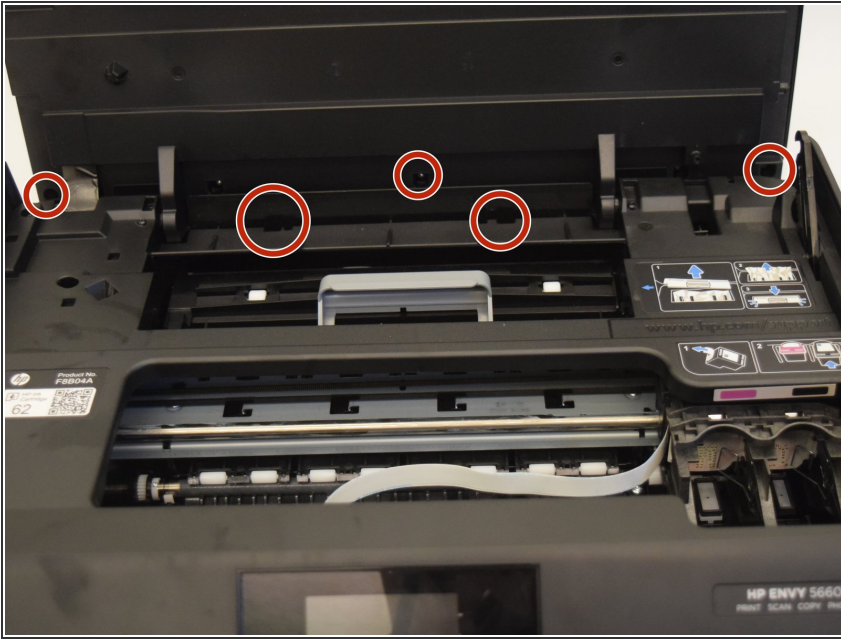
⚠ Since this is a compression spring, the hinge will snap downwards as soon as it is loosened.

Step 6



- Pull the plastic side cover off of the printer.
- ⓘ You may need to lift the printer and push the cover downwards as it is latched onto the bottom of the printer.
- ⓘ Plastic opening tools or a metal spudger may also be used.

Step 7



- Remove the five 11.5 mm screws located at the bottom of the scanner.
- ⓘ Steps 3-6 were intended to create easier access to these screws. However, they will still be difficult to reach.
- The top of the scanner will now easily pull off.

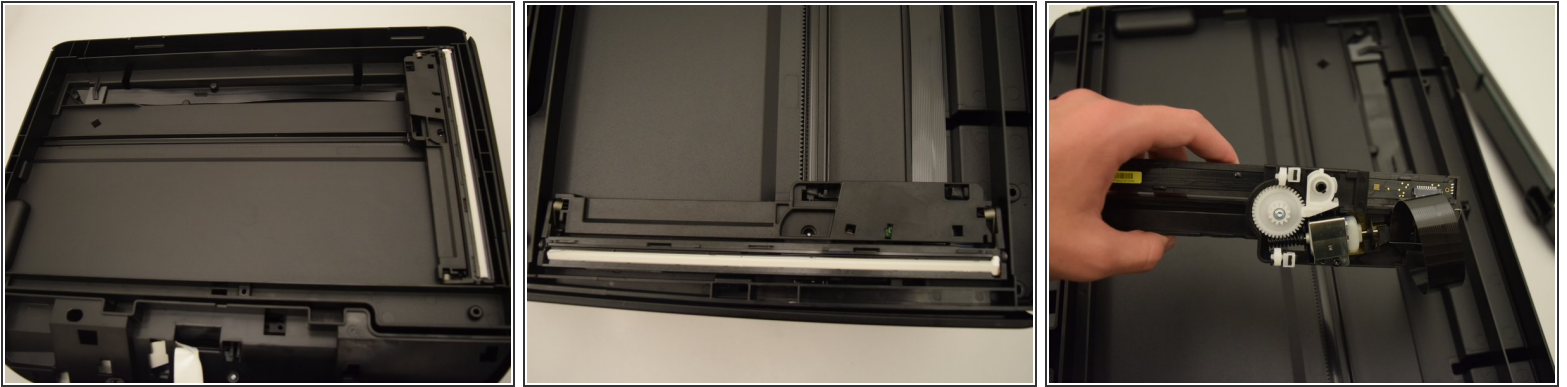
Step 8




- Pry the old scanning glass up with a metal spudger.

⚠ There are adhesives under the scanning glass. Be careful not to break the glass while removing it.

Step 9 — Scanner Piece



-  The scanning piece is located in the bottom half of the scanner that was not separated from the printer.
- Lift the scanning piece and detach the ribbon cable by gently pulling on it.

To reassemble your device, follow these instructions in reverse order.