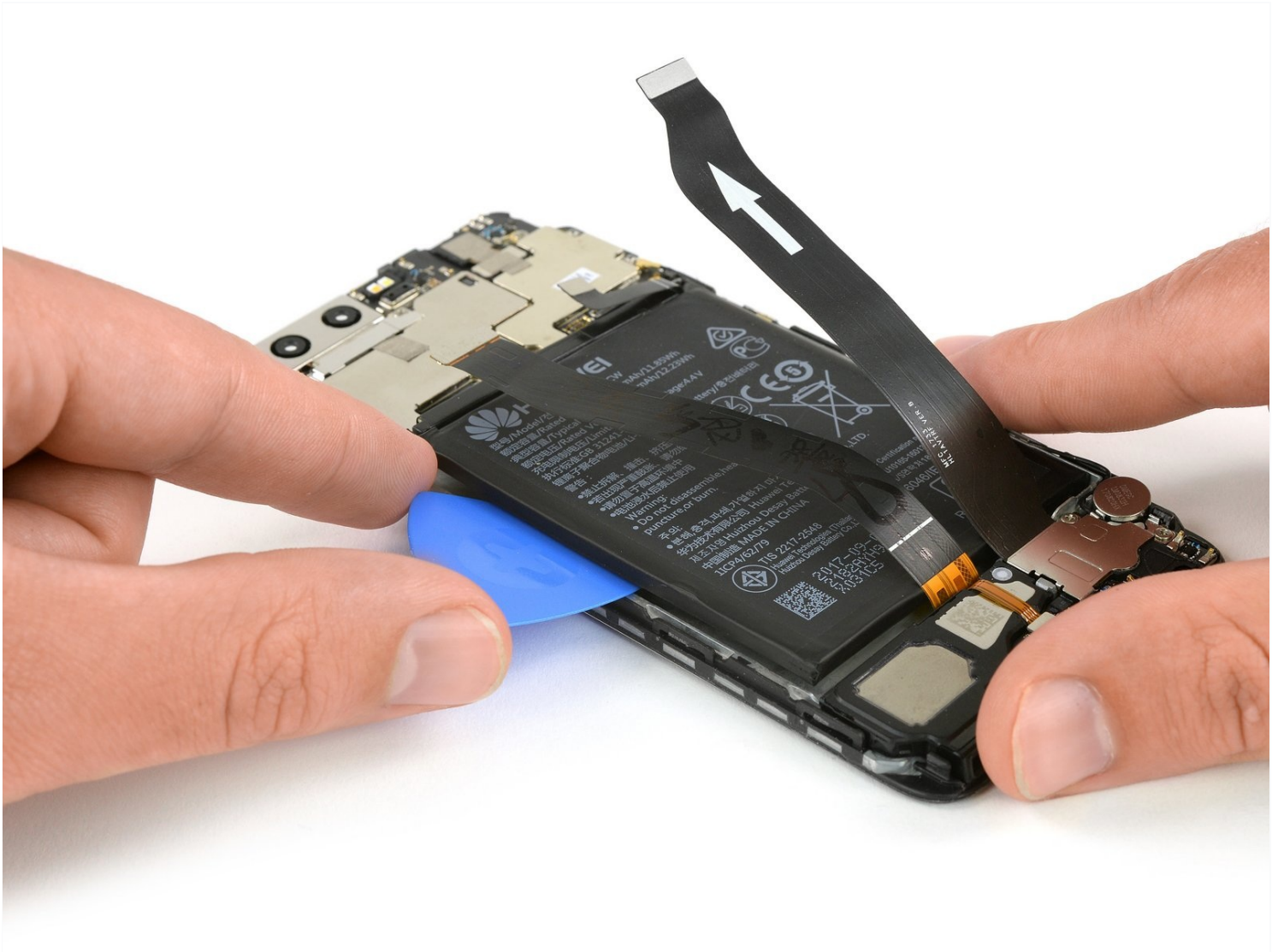




Huawei P10 Battery Replacement

Use this guide to replace the battery in your...

Written By: Dominik Schnabelrauch



INTRODUCTION

Use this guide to replace the battery in your Huawei P10 smartphone.

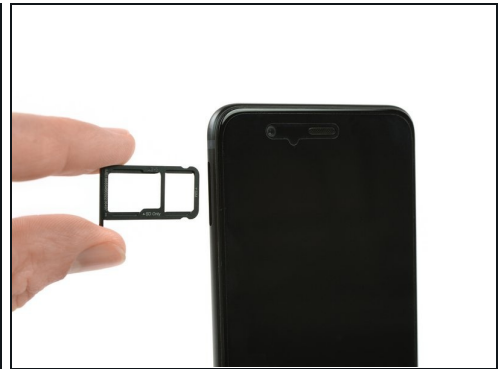
TOOLS:

[P2 Pentalobe Screwdriver iPhone](#) (1)
[SIM Card Eject Tool](#) (1)
[Spudger](#) (1)
[iFixit Opening Tool](#) (1)
[Phillips #00 Screwdriver](#) (1)
[iOpener](#) (1)
[iFixit Opening Picks \(Set of 6\)](#) (1)

PARTS:

[Huawei P10 and Honor 9 Battery](#) (1)

Step 1 — Back Cover



- Switch off your phone.
- Remove the two Pentalobe P2 screws at the bottom.
- Remove the SIM card tray.

Step 2



- Insert a plastic opening tool between the display and the case starting at the bottom area of your phone.
- Carefully pry the display with its parts out of the case.
 - ⓘ Getting the prying tool in will require some effort, be careful not to slide the tool too much or you might slightly damage the housing.
- After you pried out the bottom end, use the opening tool to open the clamps on both sides.

Step 3



⚠ Don't open the phone all the way, yet. The cable for the standby and volume buttons is still connected to the back cover.

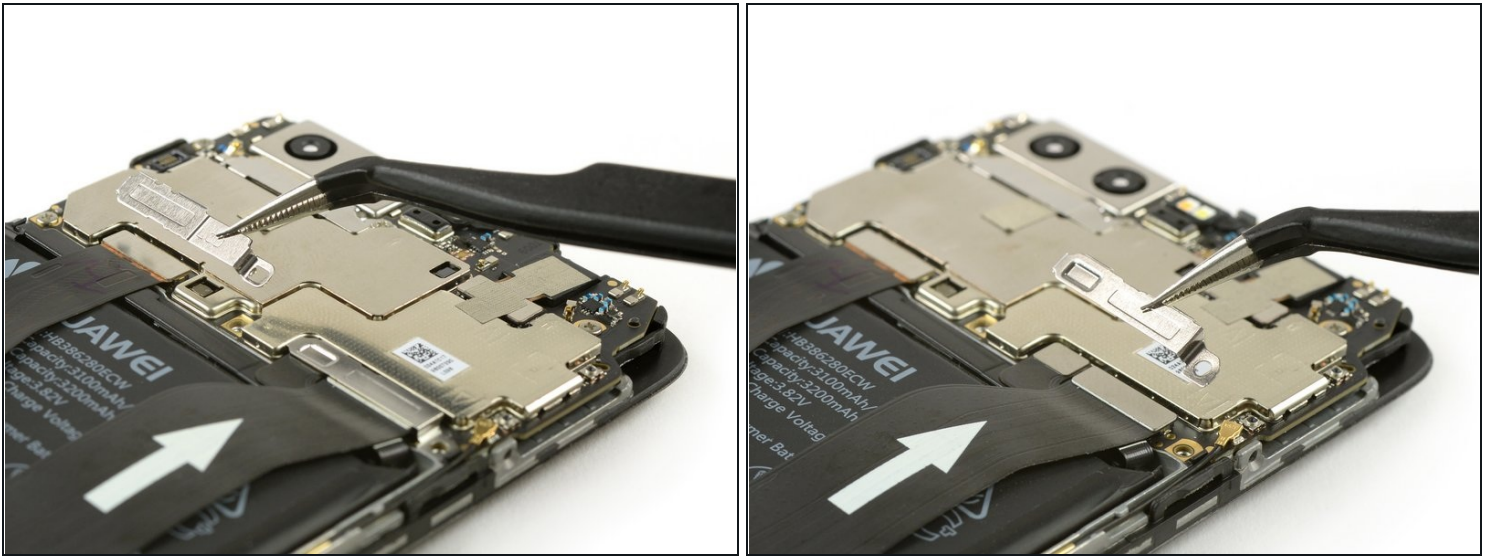
- Swing open the phone backwards.
- Use a spudger to disconnect the power- and volume button flex cable.

Step 4 — Battery



- Remove the two Phillips #00 screws.

Step 5



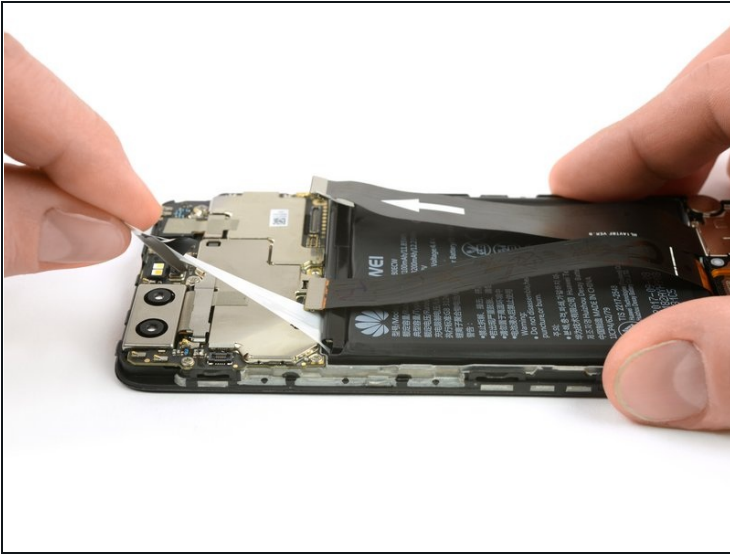
- Use [tweezers](#) to remove the two cable brackets.

Step 6



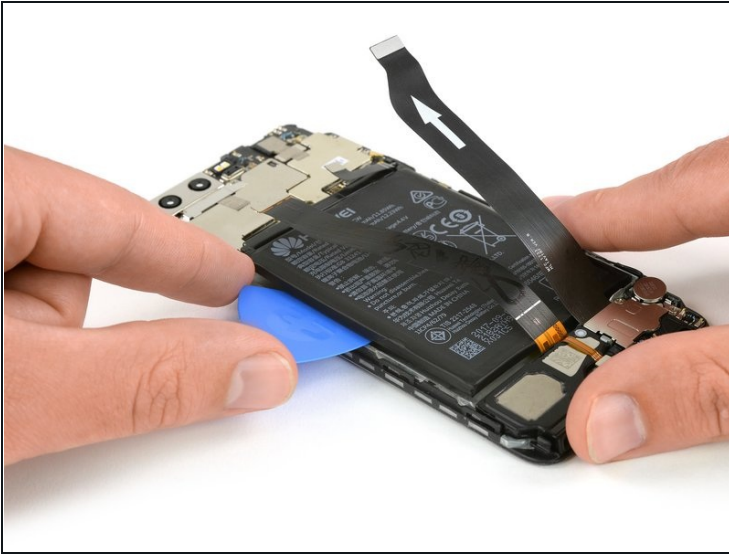
- Use a spudger to disconnect the battery, the interconnect and the display flex cable.

Step 7



- ① The battery is glued in place with two adhesive strips. One with a pull tab and one without.
- Peel out the adhesive strip which is placed beneath the battery by steadily pulling at the tab in a flat angle.
- ① It is likely that the adhesive strip rips. In this case you can grab and twist it around a tweezers tip a couple of times and then continue.
- [Use an iOpener](#) to loosen the remaining adhesive.

Step 8



⚠ Take care to not bend or puncture the battery.

- Insert an opening pick or spudger beneath the battery and carefully pry it out.
- Remove the battery.
 - ☑ When reassembling your phone, replace old adhesive with [stretch release adhesive strips](#), [double-sided tape](#), or [pre-cut adhesive strips](#).

⚠ Never reinstall a battery that has been bent or damaged during removal.

To reassemble your device, follow these instructions in reverse order. When reassembling your phone apply new adhesive where it is necessary.