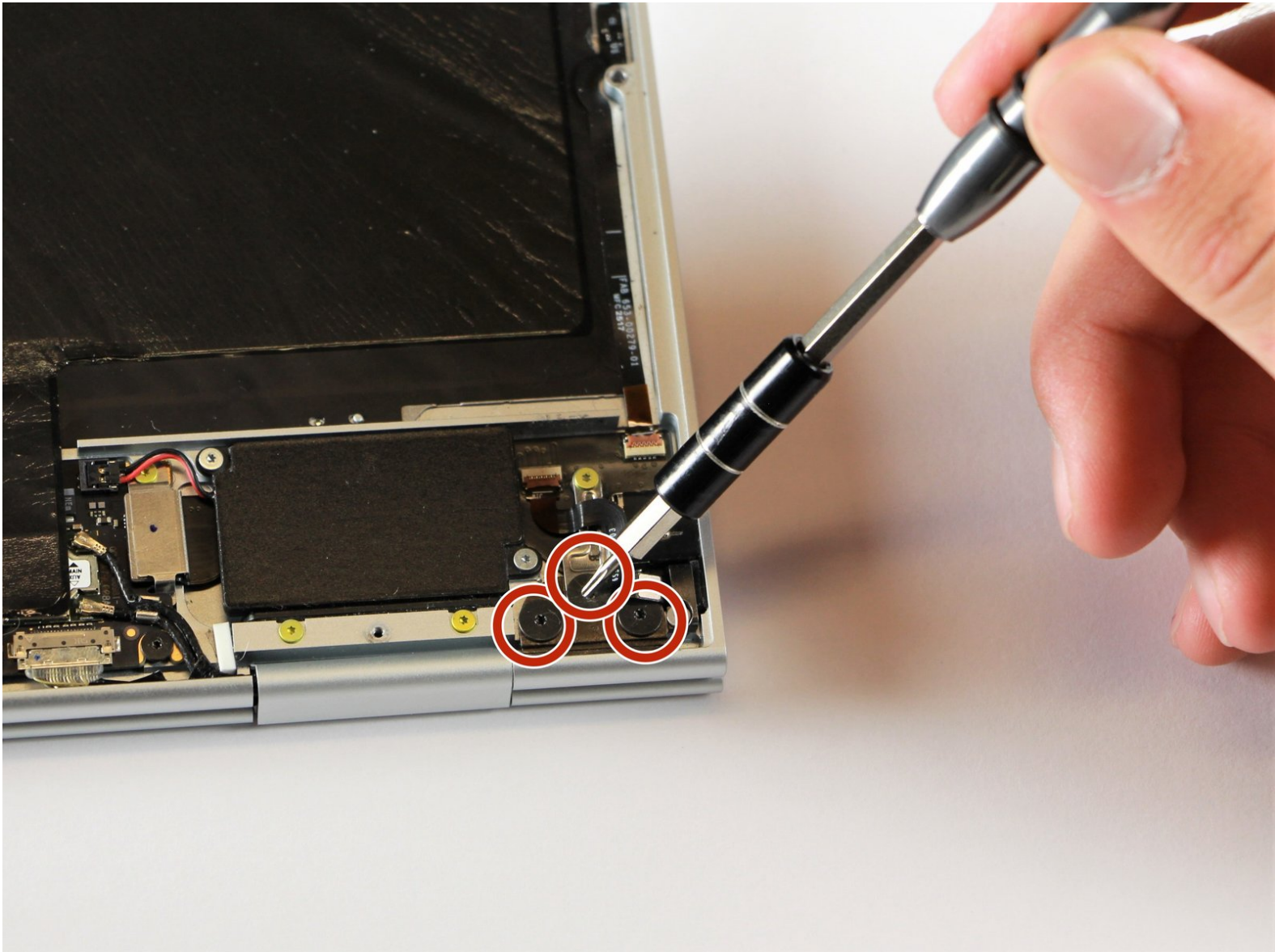




Google Pixelbook Right Charging Port Replacement

How to replace a Google Pixelbook right charging port.

Written By: Alon Gary



INTRODUCTION

In this guide, you will learn how to replace the right charging port on your Google Pixelbook to fix charging issues.



TOOLS:

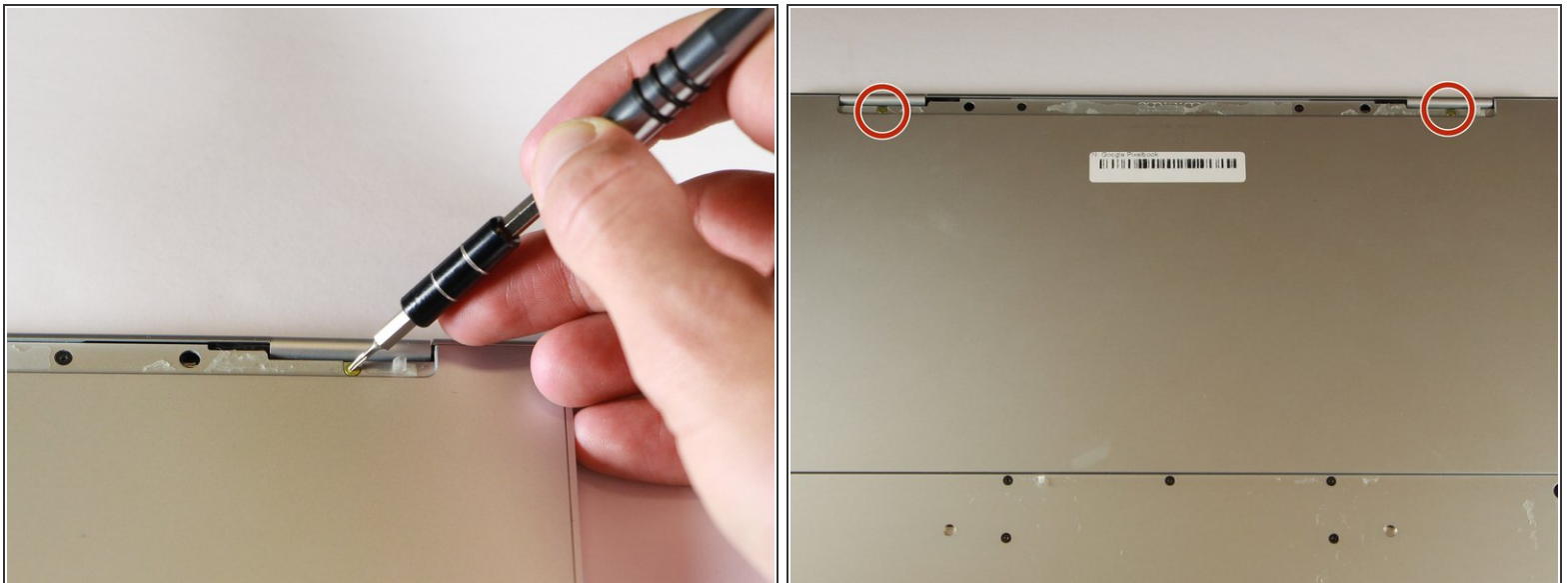
- [Spudger](#) (1)
 - [iFixit Opening Tools](#) (1)
 - [Metal Spudger \(optional\)](#) (1)
 - [T3 Torx Screwdriver](#) (1)
 - [T5 Torx Screwdriver](#) (1)
 - [Tweezers](#) (1)
-

Step 1 — Battery (Back Panel)



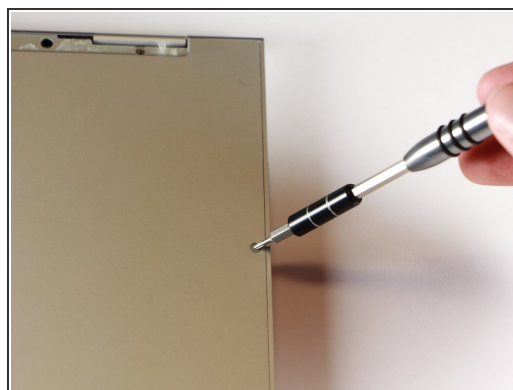
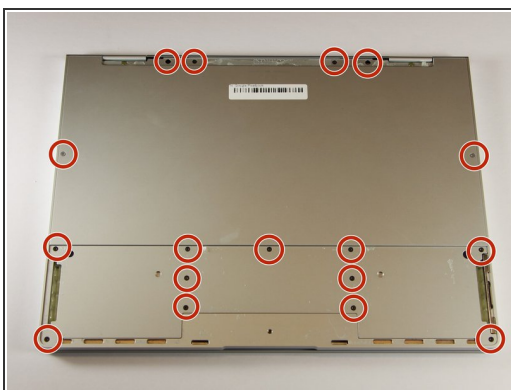
- Use the iFixit opening tools or a metal spudger to pry the rubber covers off the back of your Pixelbook.
- Peel the linings off completely until the back of the Pixelbook looks bare.

Step 2



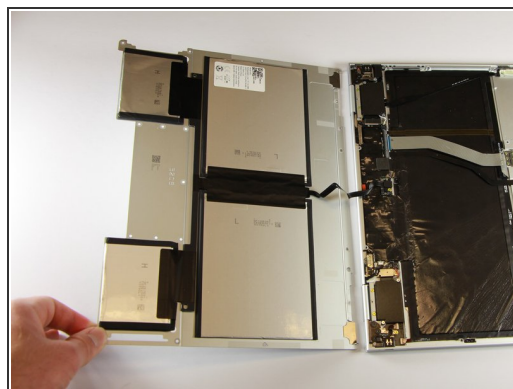
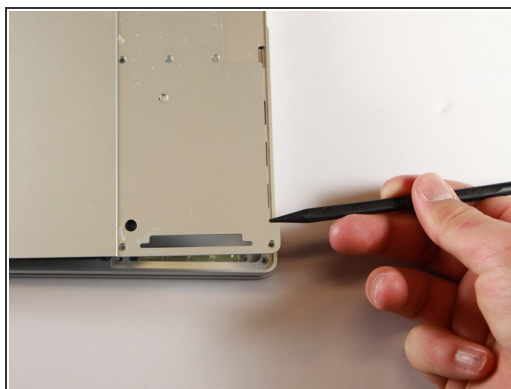
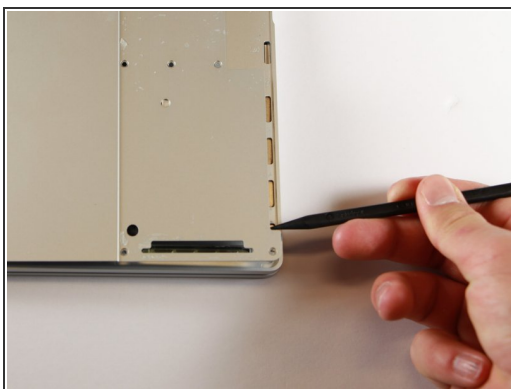
- Remove the two yellow 2.0mm screws by using a T3 Torx screwdriver.

Step 3



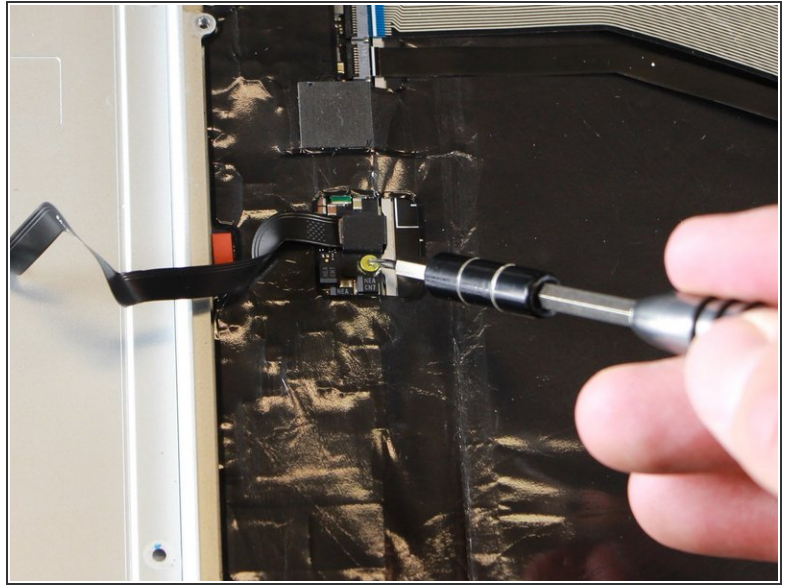
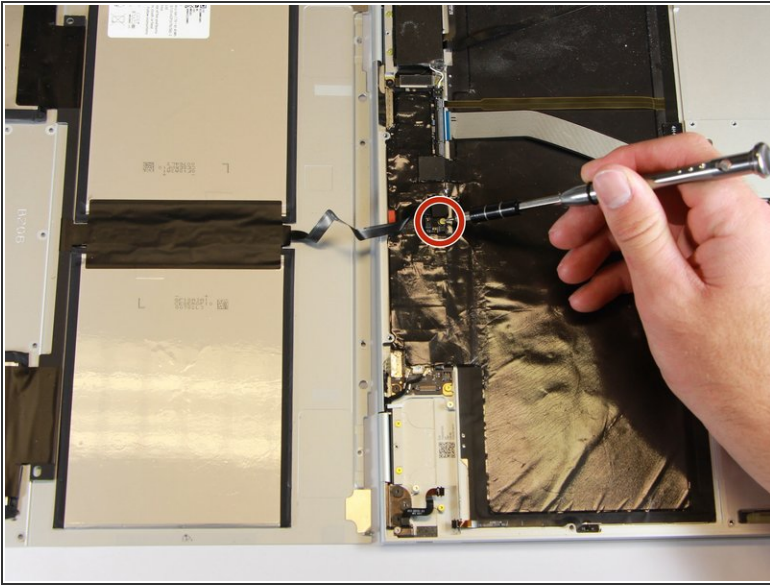
- Remove the seventeen 3.0mm T5 Torx screws from the bottom panel.

Step 4



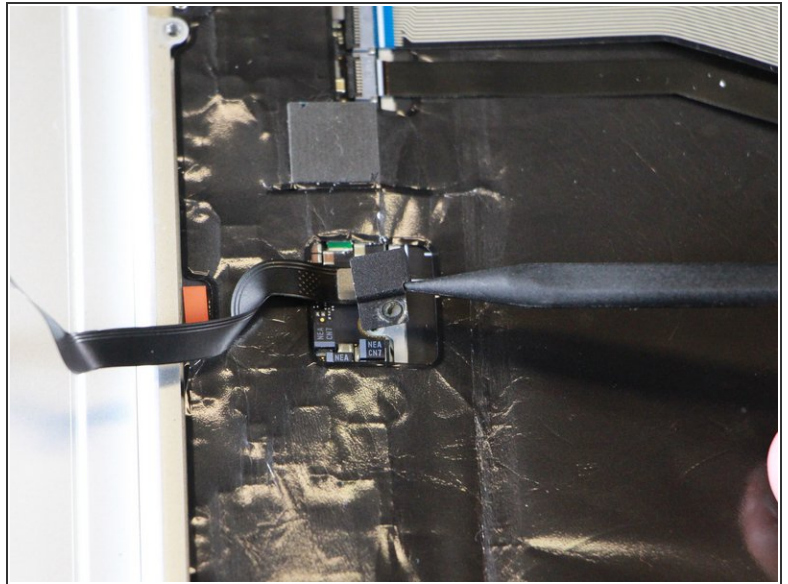
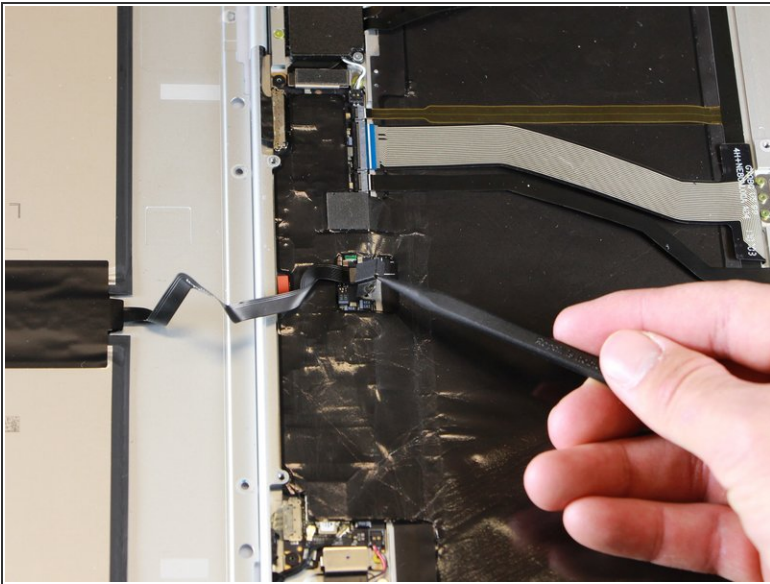
- Use the nylon spudger to pry the edge of the Pixelbook up until you can grab the edge with your fingers.
- Open the back panel completely and lay it flat so you see the whole inside of the computer.

Step 5



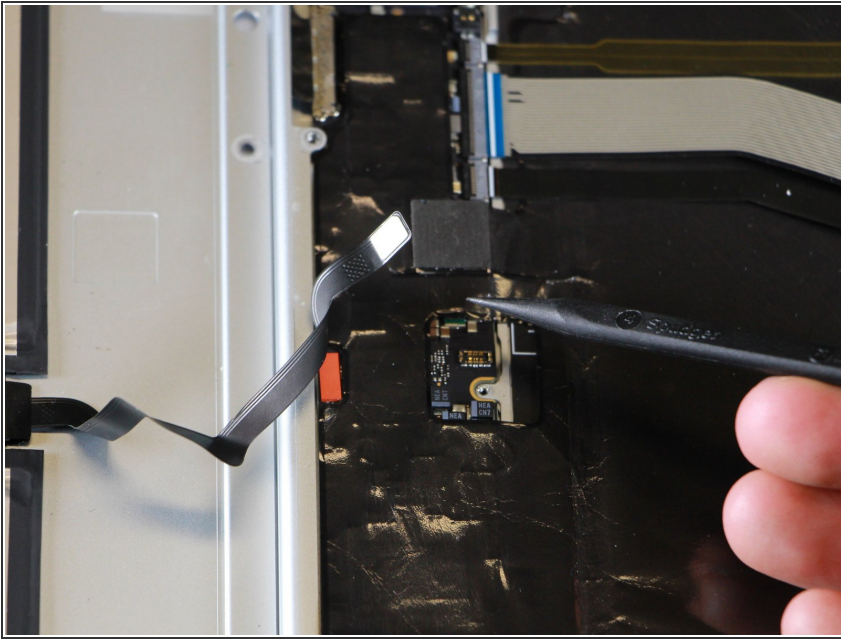
- Remove the yellow 2.0mm screw from the middle of the panel by using the T3 Torx screwdriver to turn the screw counterclockwise.

Step 6



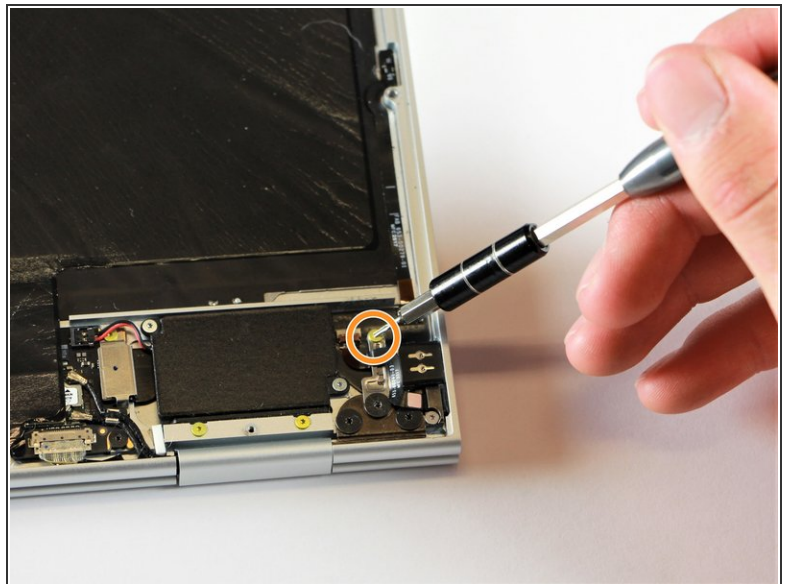
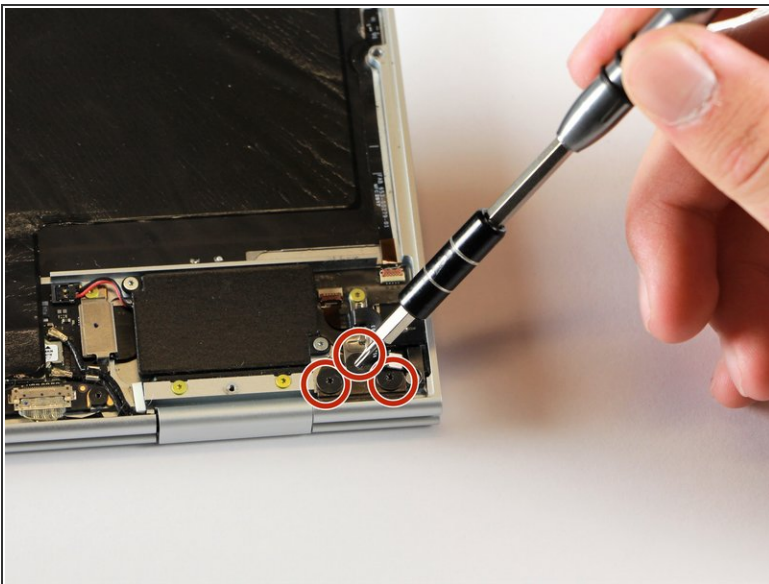
- Remove the small, black casing by using the spudger to lift it up from its place.

Step 7



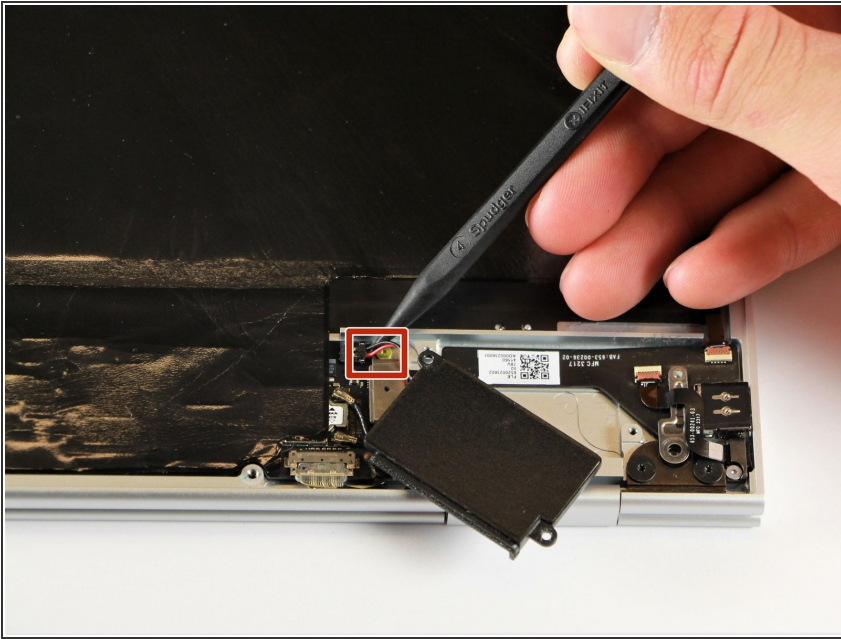
- Disconnect the flat, black cord from the main component by using a spudger to push it out of the slot, or by using your hand to carefully pull it out.
- Your back panel is now free from the main component.

Step 8 — Right Charging Port



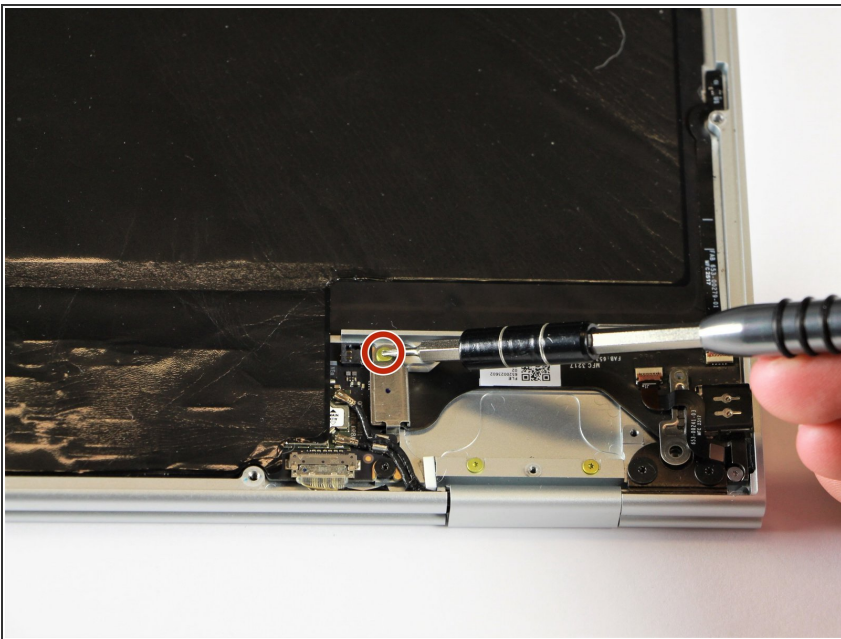
- Remove the three 2.0mm black screws from the sound card by using a T5 Torx screwdriver to turn them counterclockwise.
- Remove the gold 3.0mm screw by using a T3 Torx screwdriver to turn it counterclockwise.

Step 9



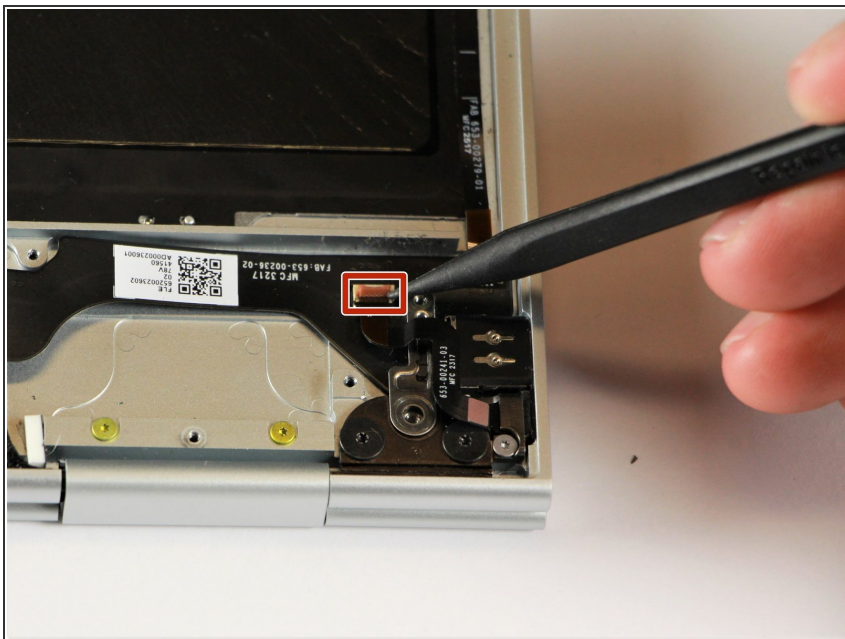
- Disconnect the thin, black and red cord from the motherboard by using the spudger to snap the connector up and out of place.

Step 10



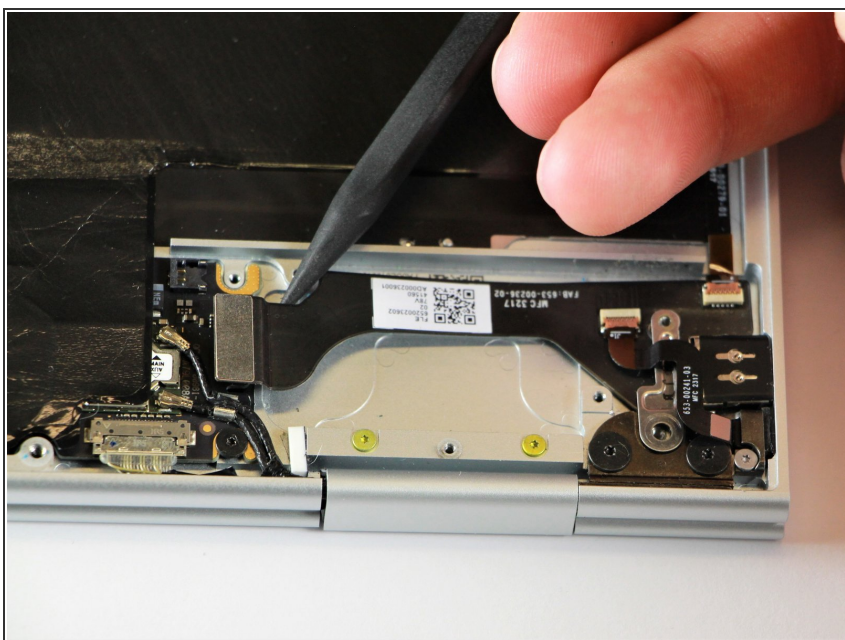
- Remove the yellow 2.0mm screw by using the T3 Torx screwdriver to turn the screw counterclockwise.

Step 11



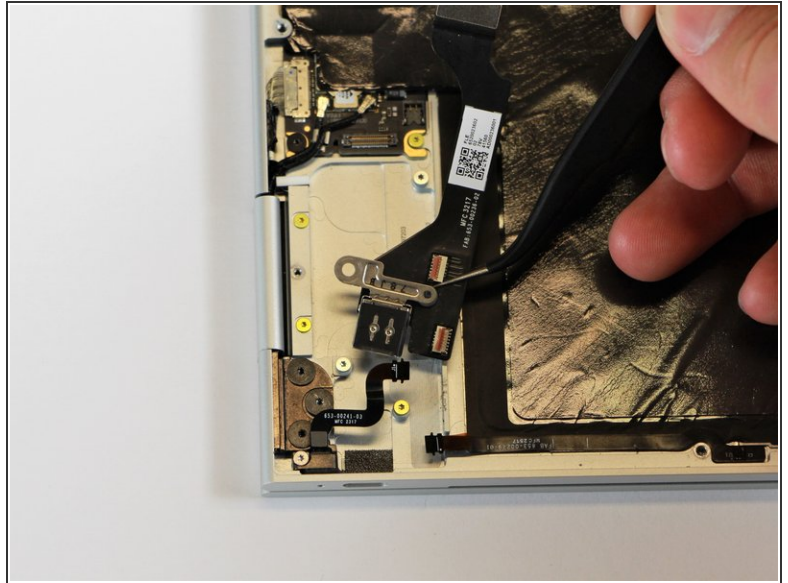
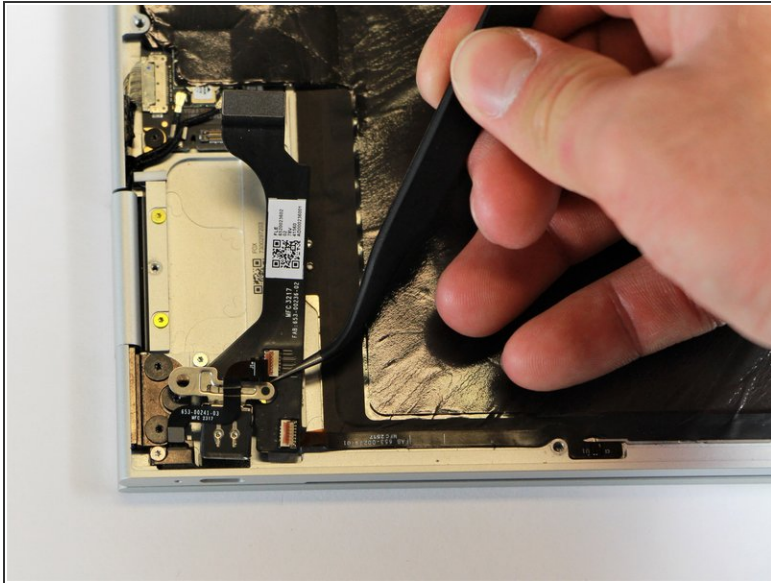
- Remove the small, red component by lifting it up with the spudger.

Step 12



- Disconnect the metal component of the thin, black component by lifting it up with the spudger.

Step 13



- Remove the right charging port by picking it up with the tweezers and lifting it from the computer.

To reassemble your device, follow these instructions in reverse order.