



# PlayStation 4 Slim Power Supply Replacement

Use this guide to remove or replace your...

Written By: Hernan Rodriguez



# INTRODUCTION

Use this guide to remove or replace your PlayStation 4 Slim's power supply.

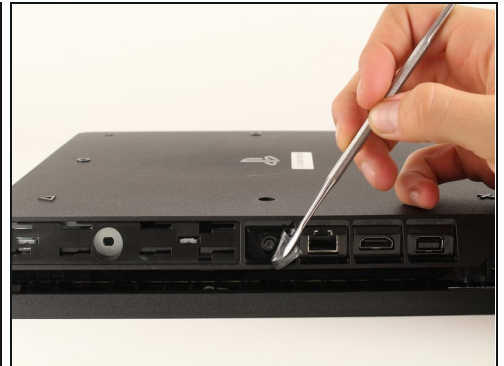
## TOOLS:

TR8 Torx Security Screwdriver (1)  
Metal Spudger (1)  
Phillips #1 Screwdriver (1)  
iFixit Opening Tool (1)

## PARTS:

PlayStation 4 Slim N15-160P1A Power Supply (1)  
PlayStation 4 Slim ADP-160CR Power Supply (1)  
PlayStation 4 Slim N16-160P1A Power Supply (1)  
PlayStation 4 Slim ADP-160ER Power Supply (1)  
PlayStation 4 Slim ADP-160FR Power Supply (1)

## Step 1 — Bottom Cover



- Locate the plastic warranty sticker next to the three ports on the side of the console.
- Remove the warranty sticker by peeling it off with any kind of spudger.

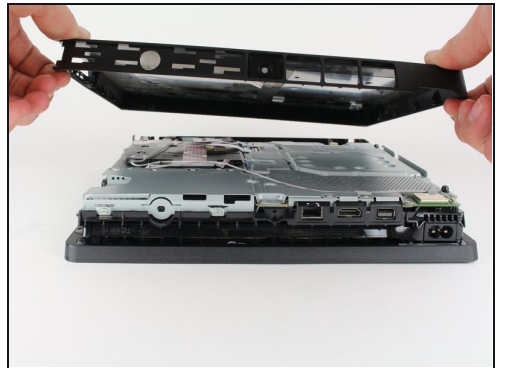
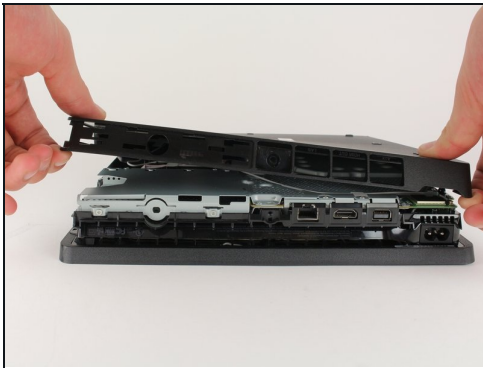
 Removing the warranty sticker will NOT cause your warranty to be null and void.

## Step 2



- Unscrew and remove the now exposed 5.0mm screw using a T8 security Torx screwdriver with a counter-clockwise motion.

## Step 3



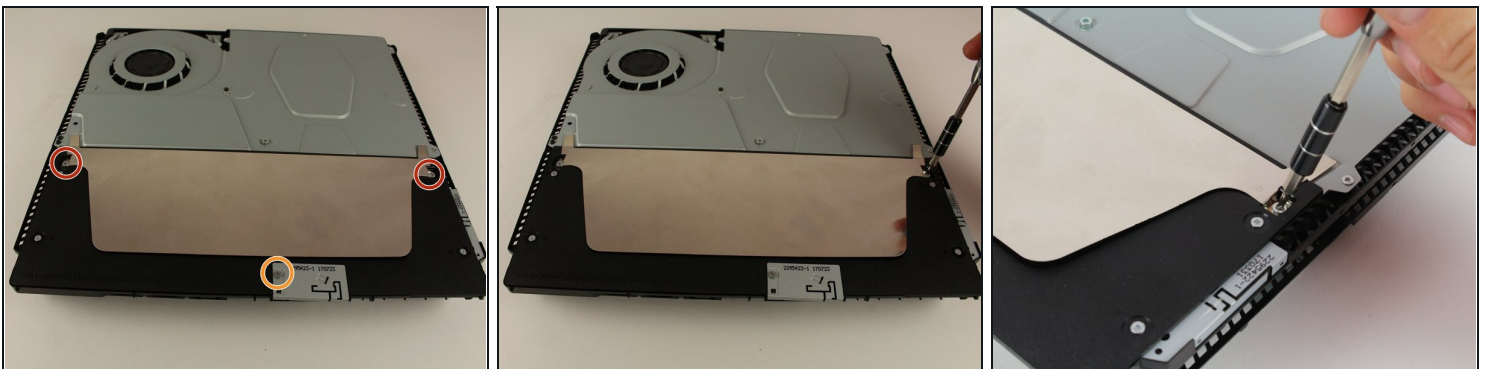
- Place the Playstation 4 Slim upside down with the side of the screw you just removed facing you.
- Pry up on the two corners that are facing you with your fingers.
- ① This may take a bit of force to open up and you will hear a fairly loud click when the bottom cover detaches.
- Remove the bottom cover by sliding it towards the back corners and lifting up.

## Step 4 — Power Supply



- Place the Playstation 4 Slim right side up, with the PS logo on top and the side with the words "SONY" and "PS4" facing you.
- Pry up on the two corners that are facing you with your fingers.
- ⓘ This may take a bit of force to open and you will hear a fairly loud click when the top cover detaches.
- Remove the top cover by sliding it towards the back corners and lifting up.

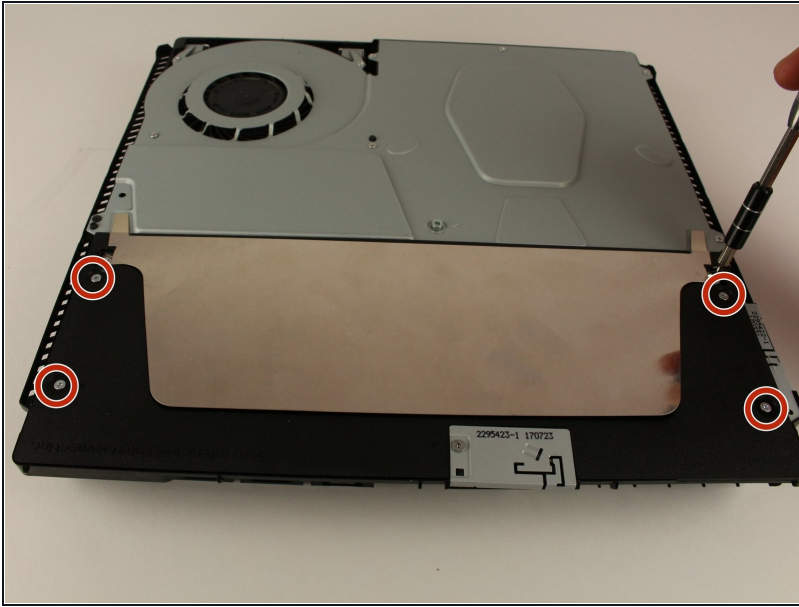
## Step 5



- Unscrew and remove the two screws (left one 31.0mm and right one 24.0mm) using a T8 screwdriver with a counter-clockwise motion.
- Unscrew and remove the 3.0mm screw using a Phillips #1 screwdriver with a counter-clockwise motion.

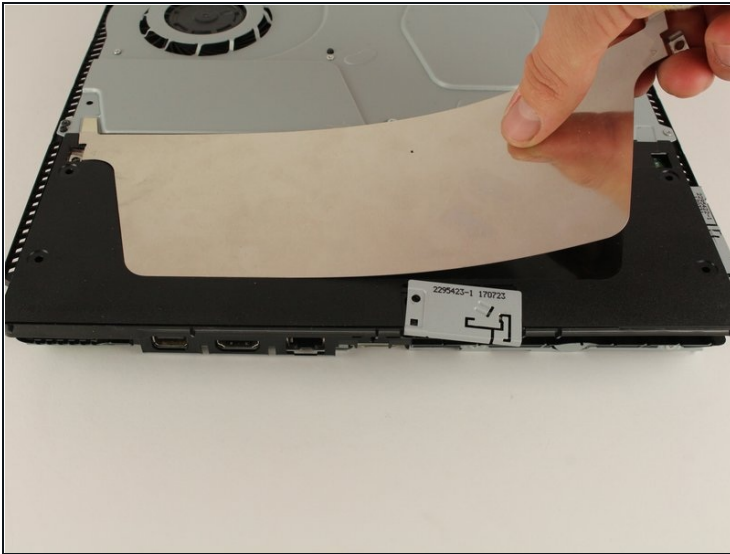


## Step 6



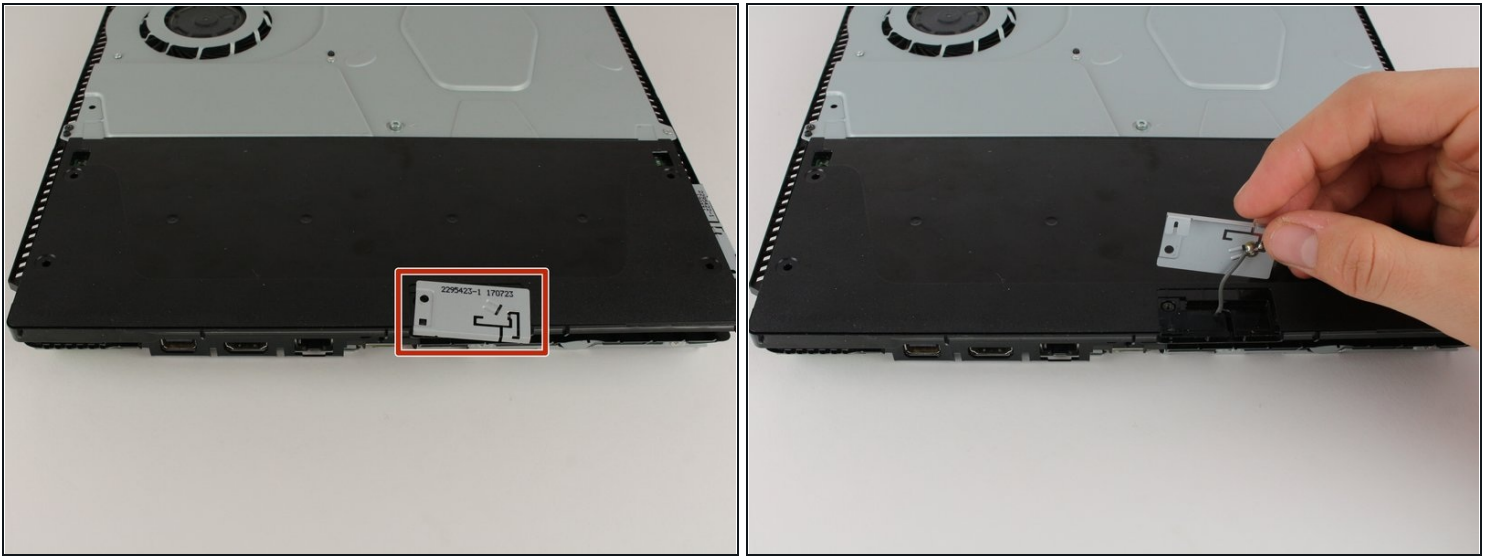
- Remove the four 16mm Philips screws holding the power supply in place.

## Step 7



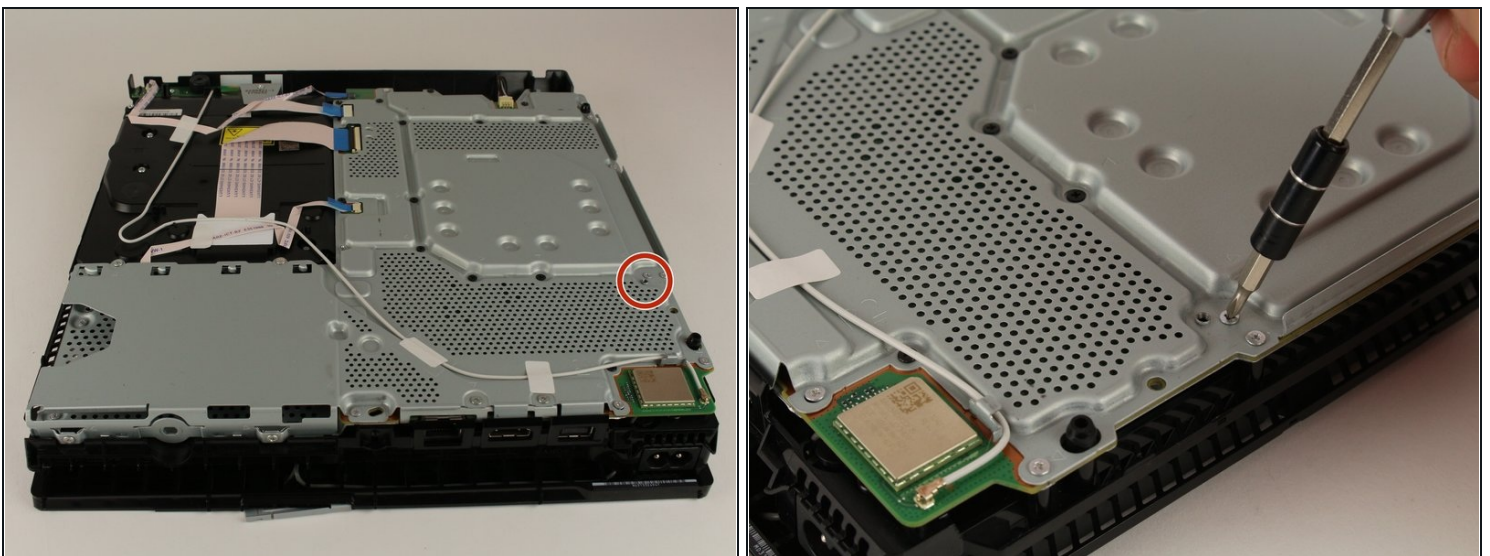
- Remove the metal sheet from the top of the power supply by grabbing and lifting up with your hands.

## Step 8



- Remove the antenna from the top of the power supply by guiding the wire with your fingers through the groves underneath the metal panel.

## Step 9



- Flip the Playstation 4 Slim onto its back.
- Unscrew and remove the 4.0mm screw using a Phillips #1 screwdriver with a counter-clockwise motion.

## Step 10



- Use a plastic opening tool to make space between the power supply and console by wedging and wiggling it in-between the two.
- Lift the power supply up and onto its back on the metal sheet using your hands.

## Step 11



- Disconnect the wire connection from the power supply by firmly gripping it with your fingers or [tweezers](#) and pulling out.
- Remove the power supply completely by grabbing and lifting up with your hands.

---

To reassemble your device, follow these instructions in reverse order.