



Motorola Moto G5 Rear Facing Camera Replacement

This guide will replace a faulty or broken rear...

Written By: Kristina Tran



INTRODUCTION

This guide will replace a faulty or broken rear facing camera.

Before you begin, download the [Rescue and Smart Assistant](#) app to backup your device and diagnose whether your problem is software or hardware related.

TOOLS:

[Spudger](#) (1)

[iFixit Opening Tool](#) (1)

[Tweezers](#) (1)

[Phillips #00 Screwdriver](#) (1)

Step 1 — Back Cover



- Insert your fingernail or the flat end of a spudger into the notch on the bottom edge of the phone near the charging port.
- Pry with your fingernail or twist the spudger to release the back cover from the phone.

Step 2



- Insert the flat end of a spudger into the seam and slide it along the bottom edge to release the clips holding the back cover to the phone.

Step 3



- Continue sliding the flat end of the spudger along the seam for the remaining sides of the phone.

Step 4



- Lift the back cover and remove it from the phone.
- ☑ To reinstall the back cover, align the cover with the phone and squeeze along the edges to snap the clips back into place.

Step 5 — Battery



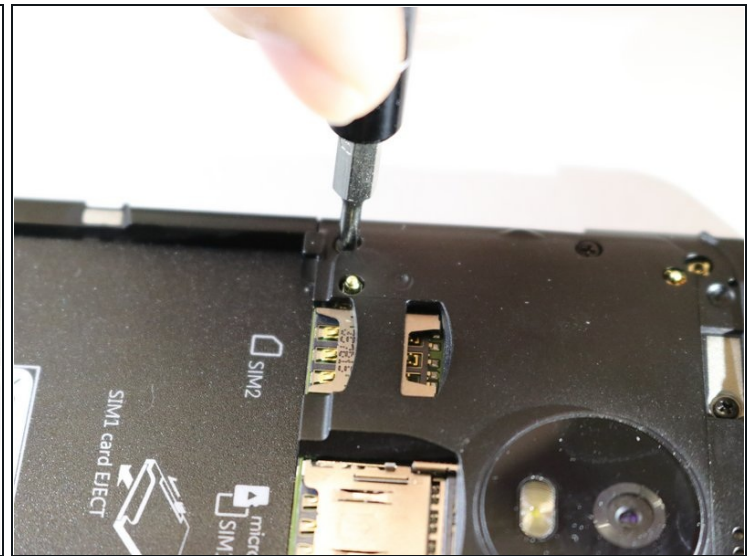
- Insert your fingernail or the flat end of the spudger into the notch below the battery.
- Pry with your fingernail or spudger until you free the battery from its recess.

Step 6



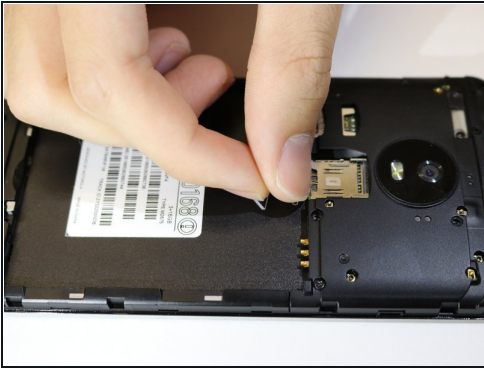
- Remove the battery.
- ☑ When installing the battery, make sure the battery's contacts line up with the three gold pins on the top right.

Step 7 — Rear Facing Camera



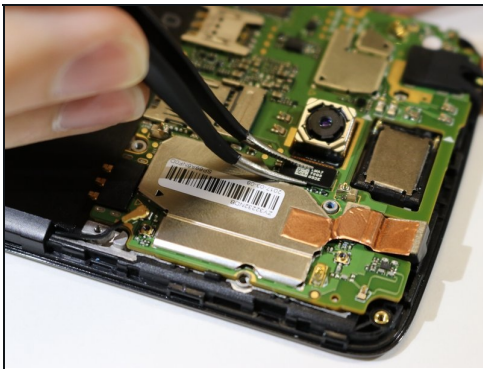
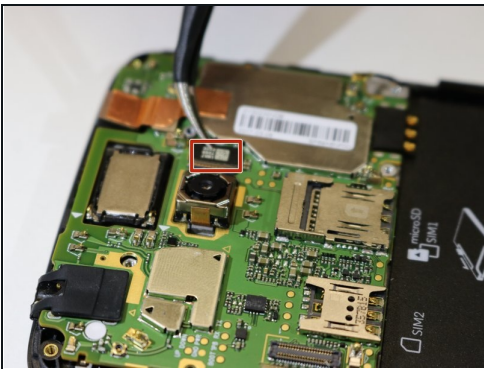
- Remove the eight (8) 4mm screws with a Phillips screwdriver.

Step 8



- Pry the top motherboard cover off using a plastic opening tool.
- ① When prying it open, make sure to pry it around evenly so that the cover will not snap. This will require some force.

Step 9



- Disconnect the marked connector with a pair of [tweezers](#) and remove the camera piece.

To reassemble your device, follow these instructions in reverse order.