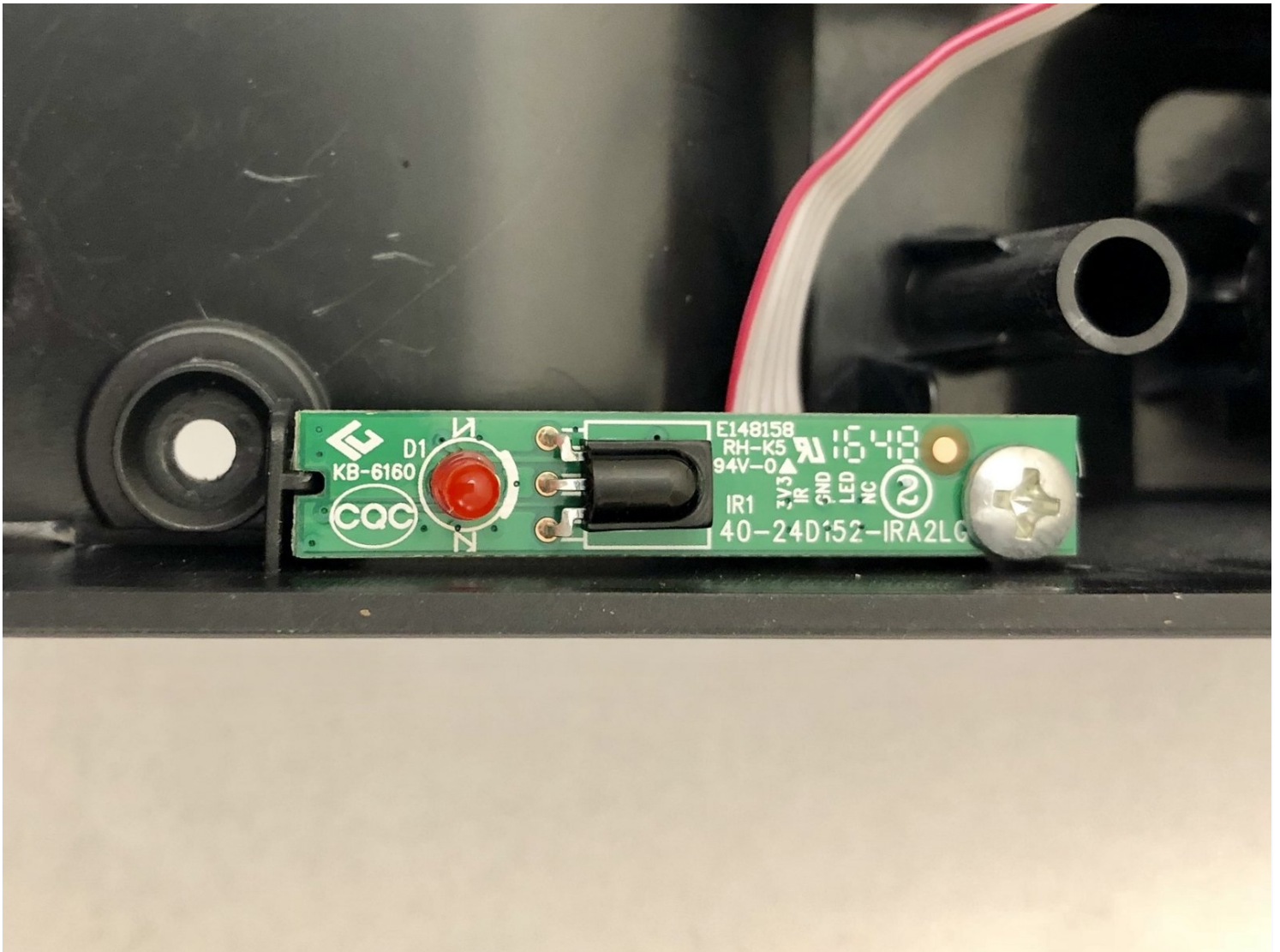




Insignia NS-24ER310NA17 Infrared Sensor Replacement

Use this guide to replace the infrared sensor...

Written By: Joelle Hylton



INTRODUCTION

Use this guide to replace the infrared sensor in your Insignia NS-24ER310NA17 television.

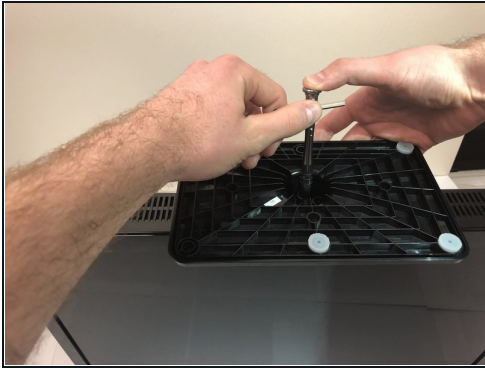
TOOLS:

Phillips #00 Screwdriver (1)

PARTS:

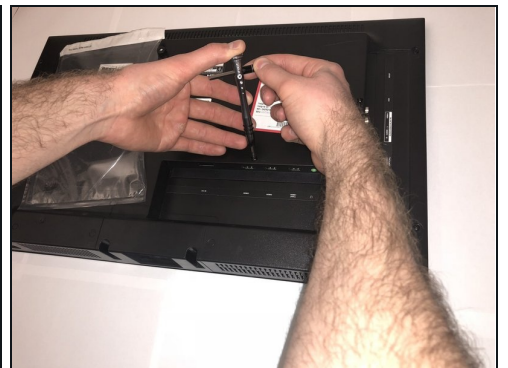
TCL 40FS3800 IR Sensor KB-6160 (1)

Step 1 — Remove the base



- Rest the TV on its top edge so you have access to the base.
- Use a Phillips #2 screwdriver to take out the four screws on the bottom of the base.
- Remove the base from the frame.

Step 2



- Lay the TV face down.
- Use the Phillips #00 screwdriver to remove all of the Phillips Head Screws from the the back of the TV.

Step 3 — Pry the TV open

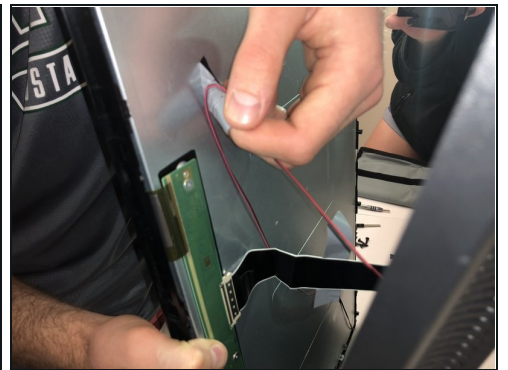
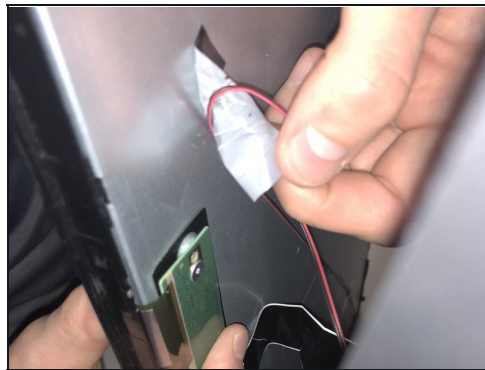
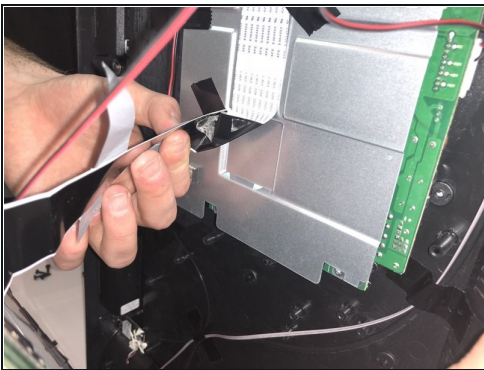


- Stand the TV on its top edge.
- Gently pry apart the front and back of the TV.

① The two halves should pull apart easily since there are no longer any screws holding it together.

⚠ The two halves will still be connected by wires and cables that are taped to each side. Do not pull on these. We will remove them in the next step.

Step 4 — Disconnect wires



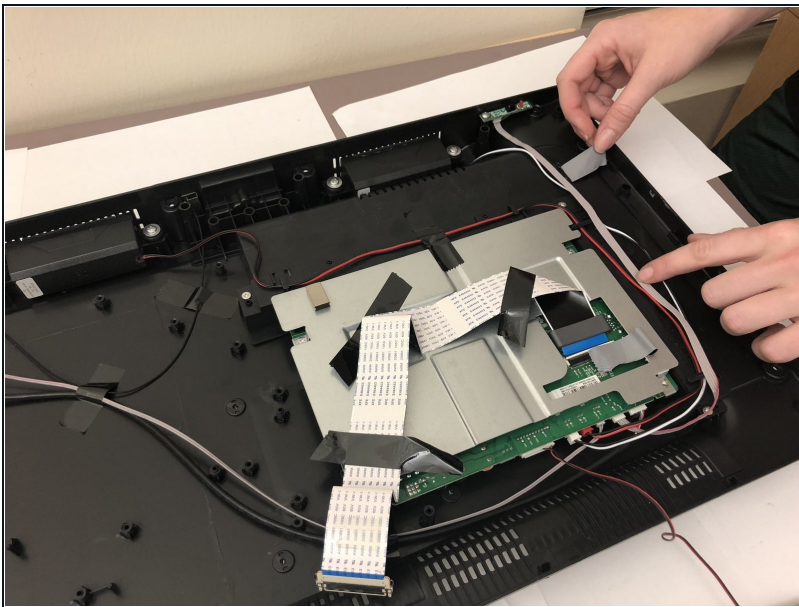
- ① As mentioned in the previous step, there are wires still connecting the two halves.
- Remove all the pieces of tape to detach the wires from both sides.
 - You want to gently peel the tape off, without pulling on the wires.

Step 5



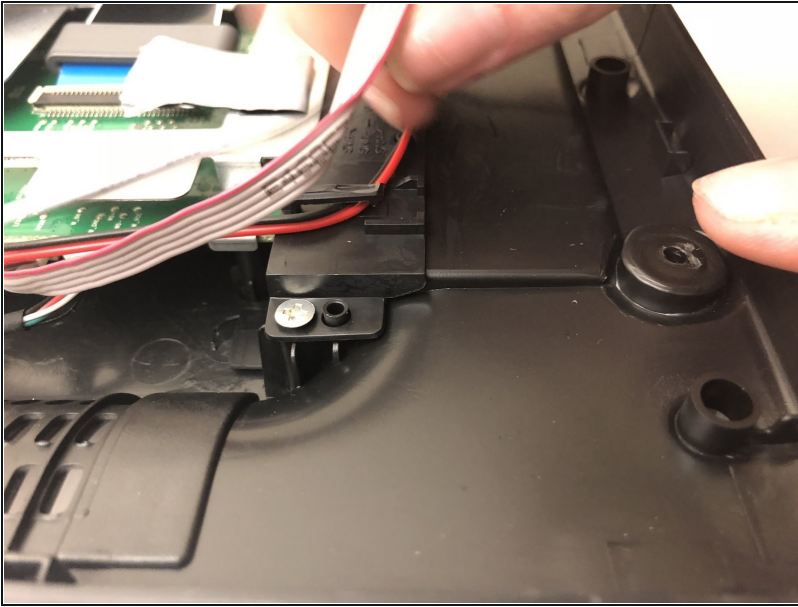
- Spread apart your TV the rest of the way, but do not disconnect any of the wires.
- ① You should have a clear view of the inside on both sides.

Step 6 — Motherboard



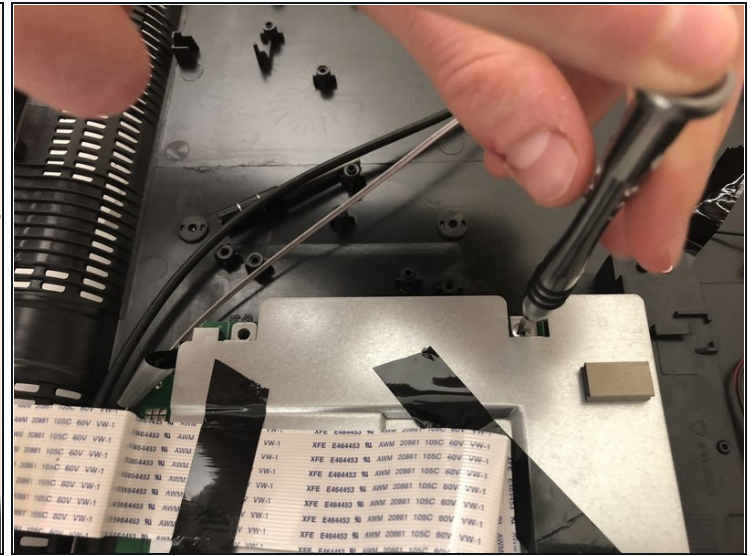
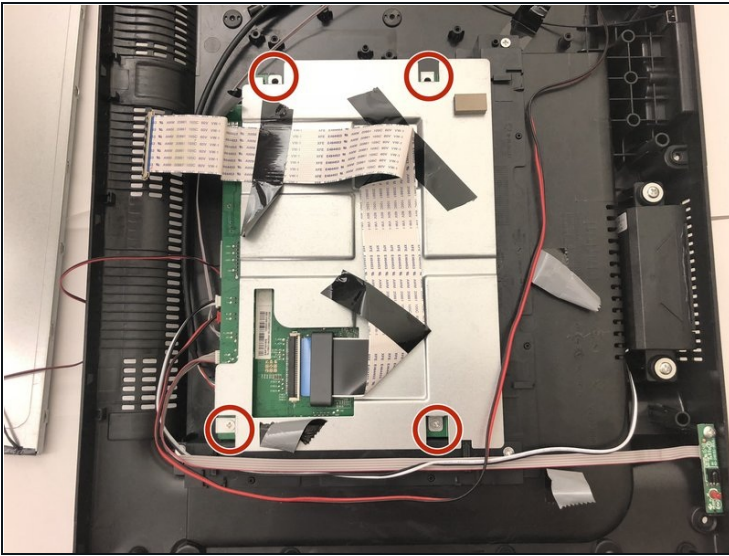
- Remove all strips of tape attached to the silver steel rectangular piece.

Step 7



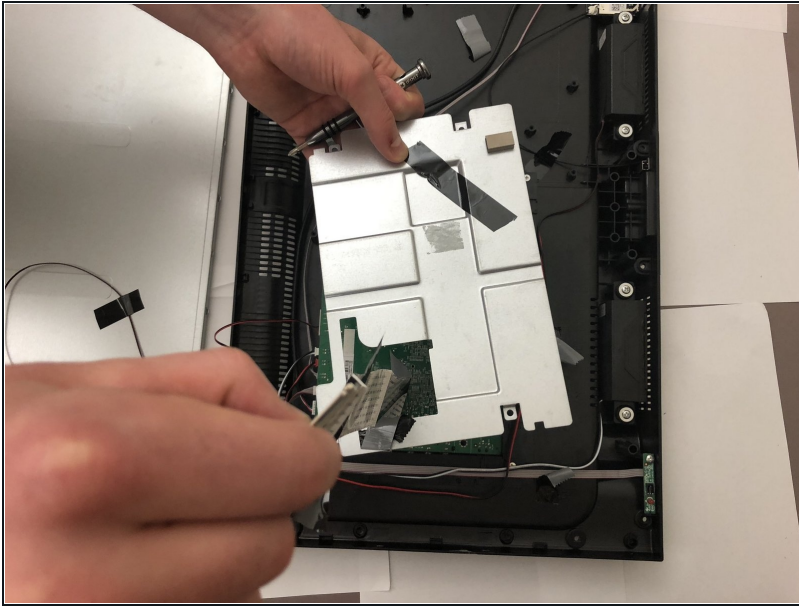
- Pull the red wire out from under the black plastic clip.

Step 8



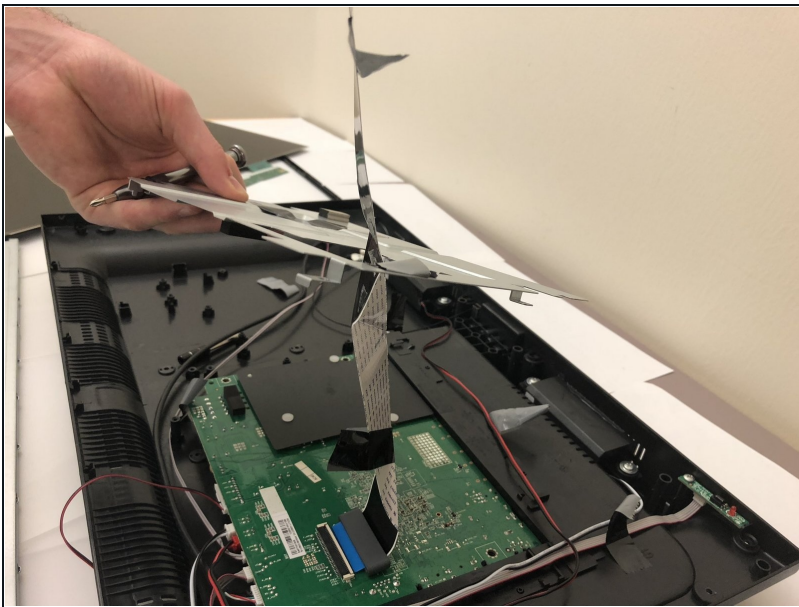
- Unscrew the four screws surrounding the steel rectangle with a Phillips 00 Screwdriver.

Step 9



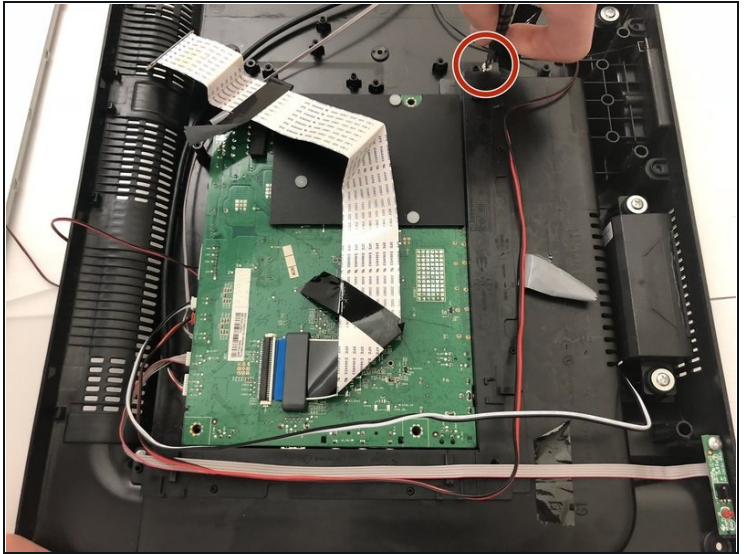
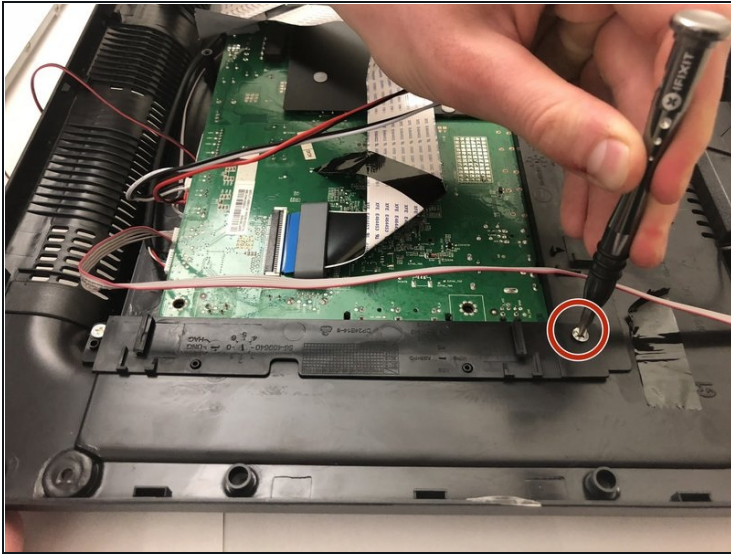
- Carefully lift the rectangular piece.

Step 10



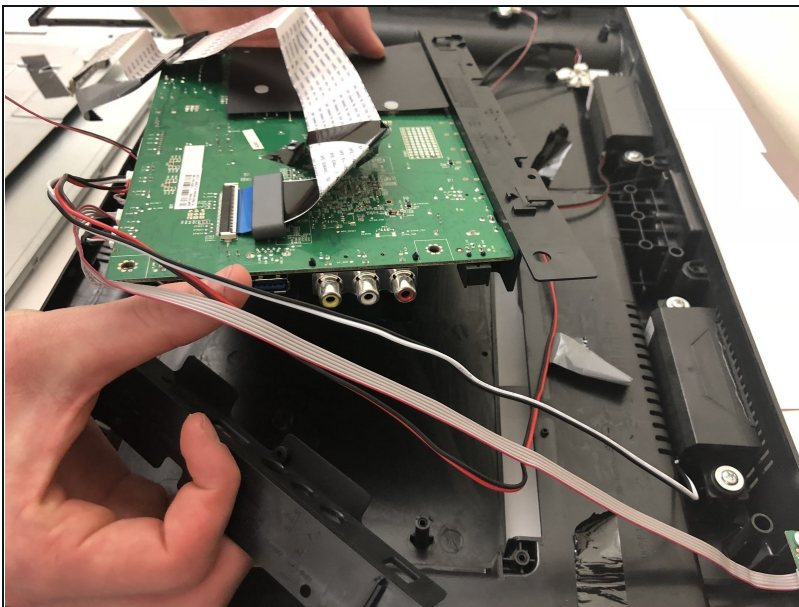
- The rectangular piece will still be attached to the motherboard beneath it with a strip of tape. Remove this strip of tape.

Step 11



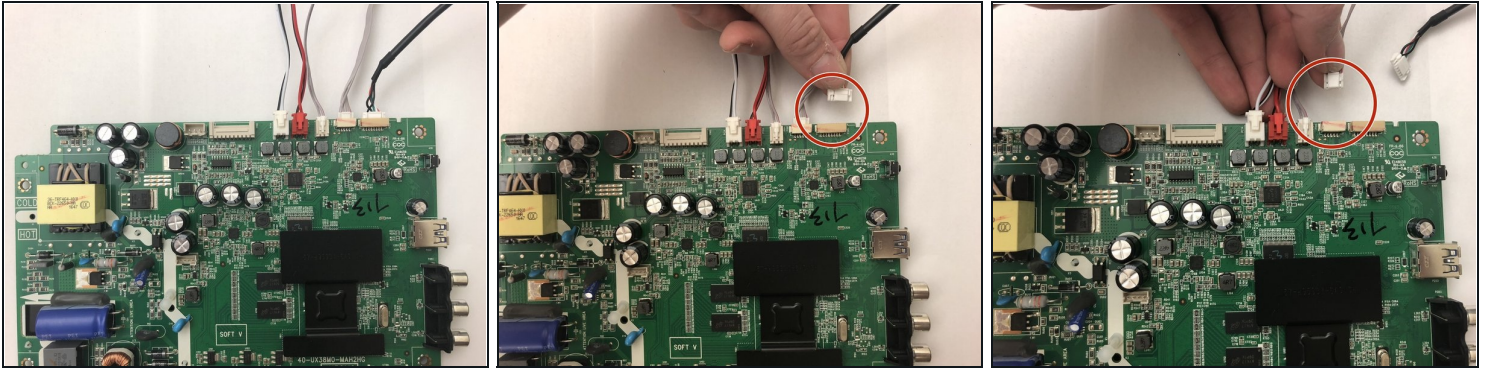
- Use a Phillips #00 screwdriver to remove the two screws on both sides of the motherboard.

Step 12



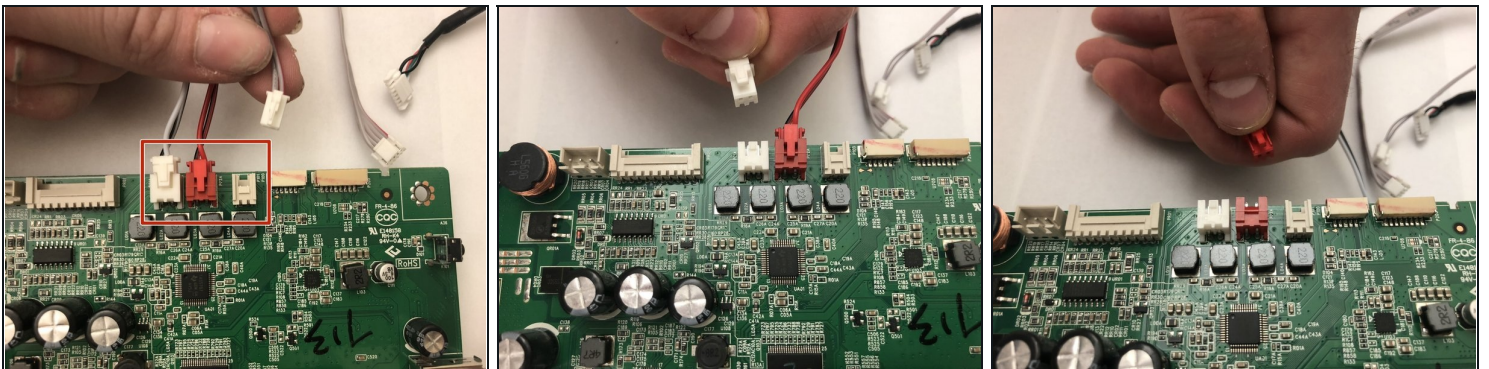
- Carefully lift the motherboard away from the television.
⚠ Keep in mind that the motherboard is still attached by several thin wires and should not be tugged.

Step 13



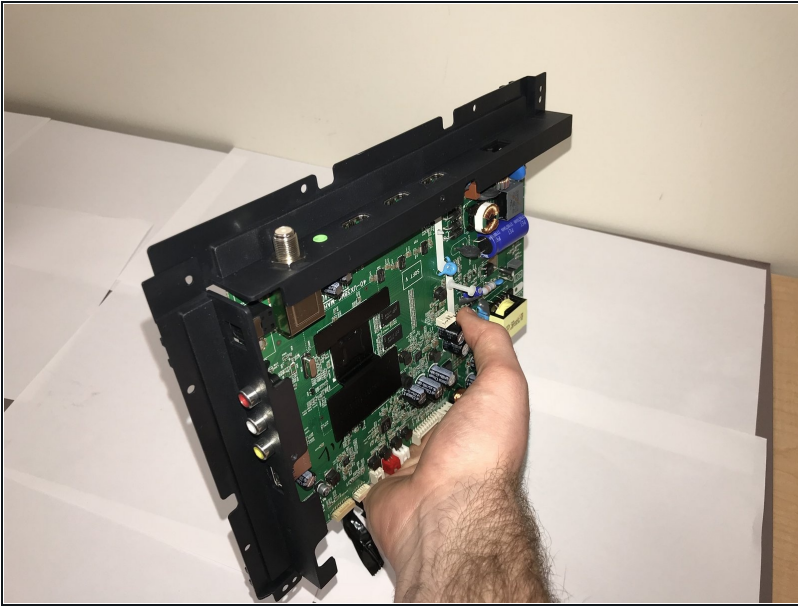
- There are 5 wires attached to the motherboard. Remove the two thicker white wires to the right of the red wire.

Step 14



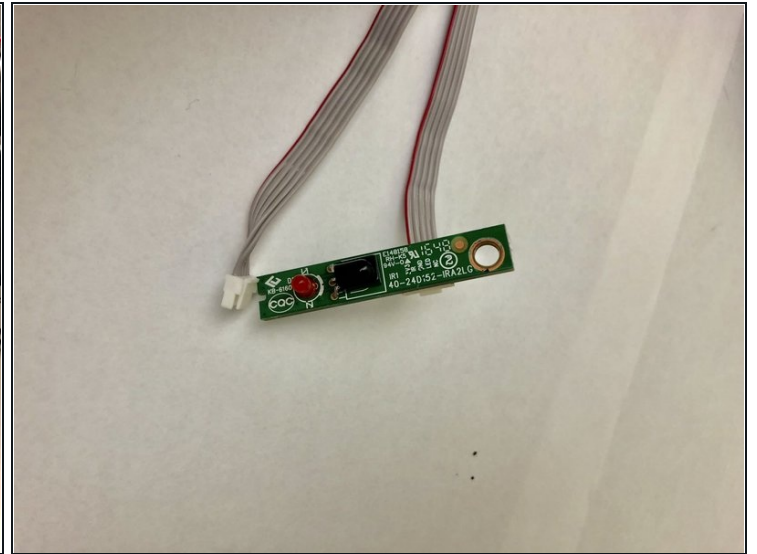
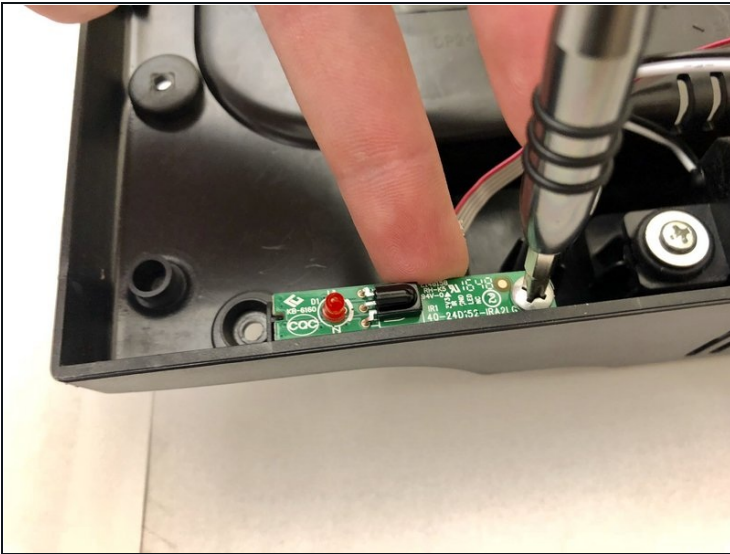
- Remove the remaining three wires from the mainboard.

Step 15



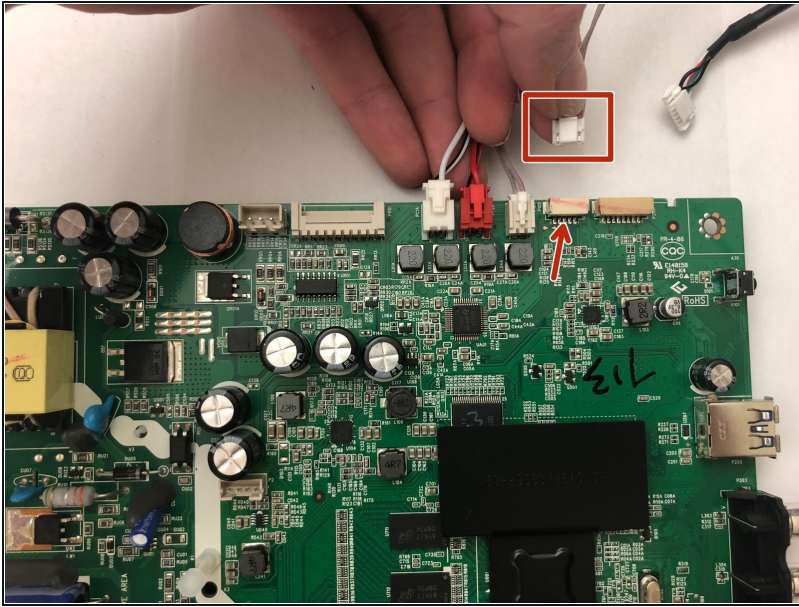
- Carefully remove the mainboard from the television.
- You have now successfully removed the mainboard.

Step 16 — Infrared Sensor



- Unscrew single screw holding IR sensor and remove sensor with ribbon cable.
- Place the new sensor where the old one was and replace the screw.

Step 17



- Plug the new sensor's cable into the motherboard. Make sure to plug it into the correct location.

To reassemble your device, follow these instructions in reverse order.