



Netgear Arlo Plastic Housing Replacement

How to remove and replace the plastic housing of the Arlo camera.

Written By: Connor Krampen



INTRODUCTION

How to remove the plastic housing of the camera to either replace it, or remove it to get to the internals of the camera.



TOOLS:

- [JIS #0 Screwdriver](#) (1)
 - [iFixit Opening Tools](#) (1)
-

Step 1 — Battery



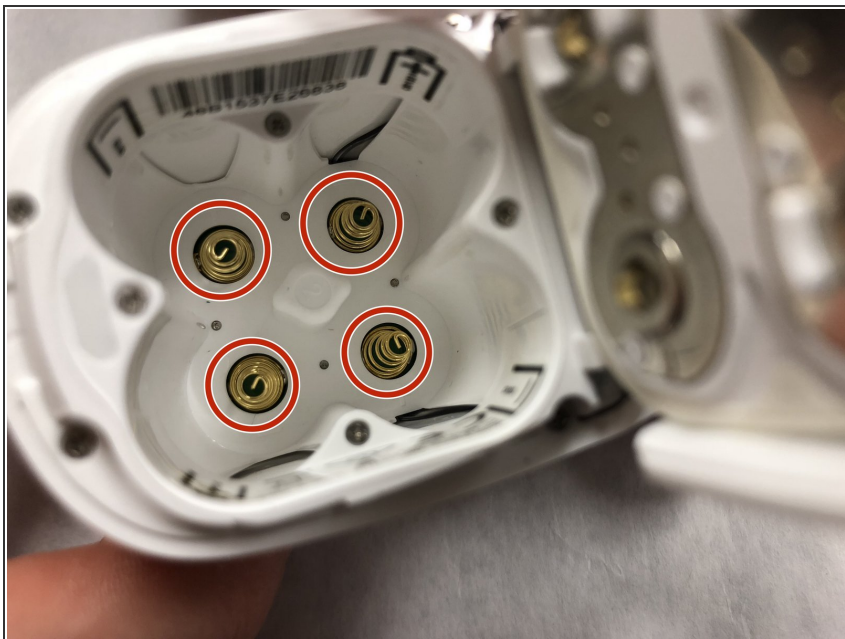
- Locate unlock switch on underside of camera and unlock it by sliding it.
- Once unlocked, slide the cover out and up to open the battery housing.

Step 2



- Remove all 4 of the 3.0 Volt batteries from the battery housing.

Step 3



- Inspect prongs at the bottom of the battery housing to ensure that they are not bent or broken before replacing the batteries.

Step 4 — Plastic Housing



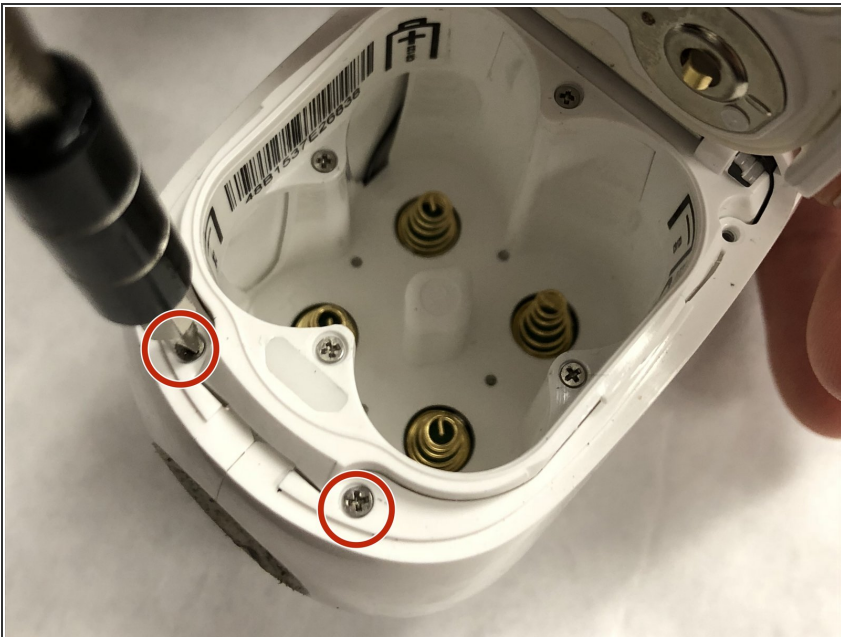
- Remove the 2 (3.5mm) housing screws with a J0 screwdriver.

Step 5



- Slide the unlocked battery cover forward to remove 2 (3.5mm) screws, that are behind the cover.

Step 6



- Open the battery cover and remove the 2 (3.5mm") screws from under the cover.

Step 7



- Use a plastic opening tool to start separating the plastic housing from the front side of the battery cover.
- Next, start separating the plastic cover from the rear of the plastic housing, and work your way down the seam line.
- ⓘ Make sure the plastics snaps on the front of the plastic get unhooked from the grey plastic ring around the front of the camera.

Step 8



- Remove the screw (3.5mm) near the sync button holding the opposite side of the camera on.
- Remove the second screw (3.5mm) on the back of the camera to remove the second housing.
- Once the screws are removed use an opening tool to pry back the second plastic mount.

To reassemble your device, follow these instructions in reverse order.