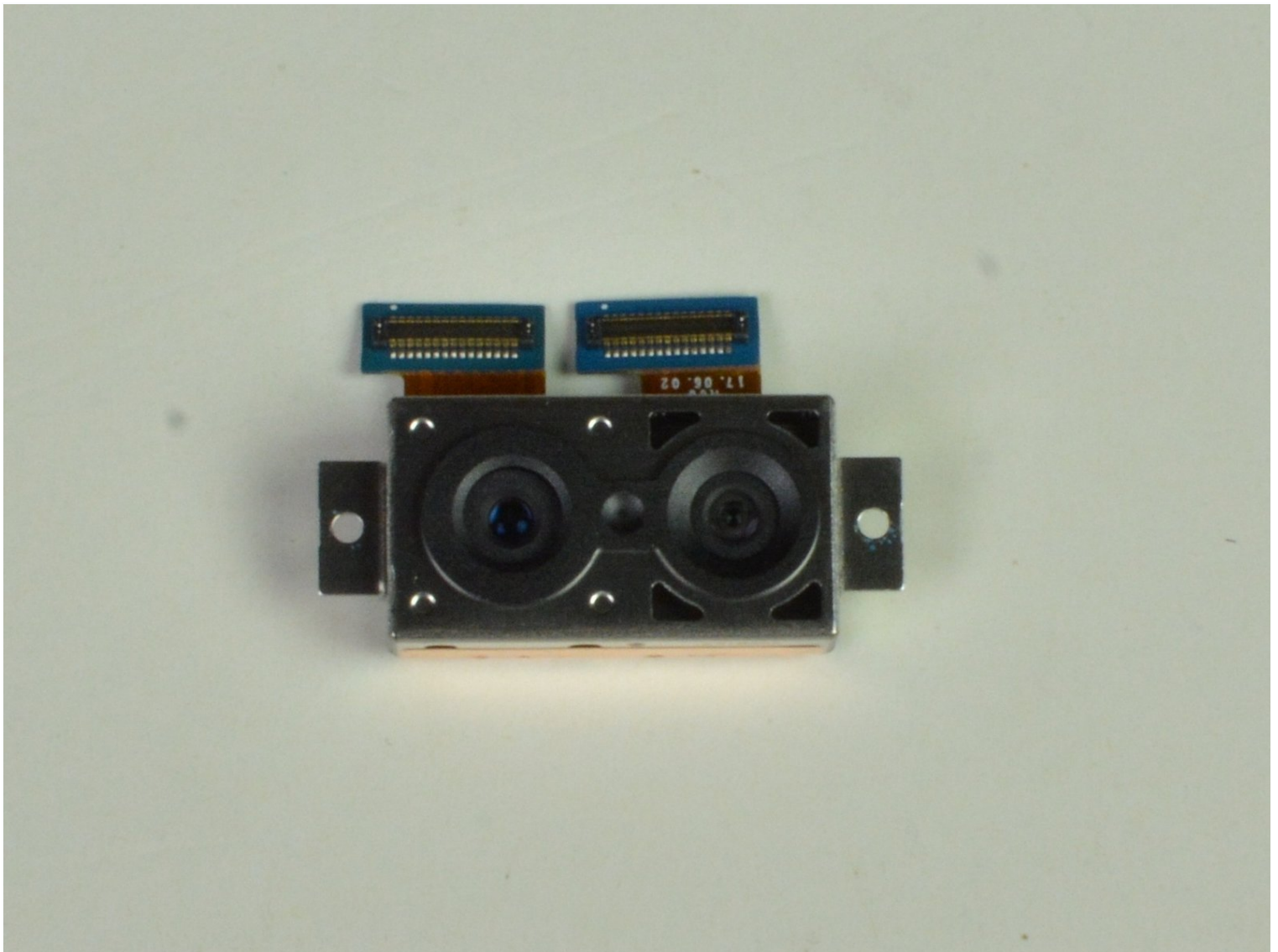




# Motorola Moto X4 Rear Camera Replacement

Follow this guide to remove the rear-facing...

Written By: Brian Buchanan



# INTRODUCTION

Follow this guide to remove the rear-facing cameras from your Moto X4.

Before you begin, download the [Rescue and Smart Assistant](#) app to backup your device and diagnose whether your problem is software or hardware related.



## TOOLS:

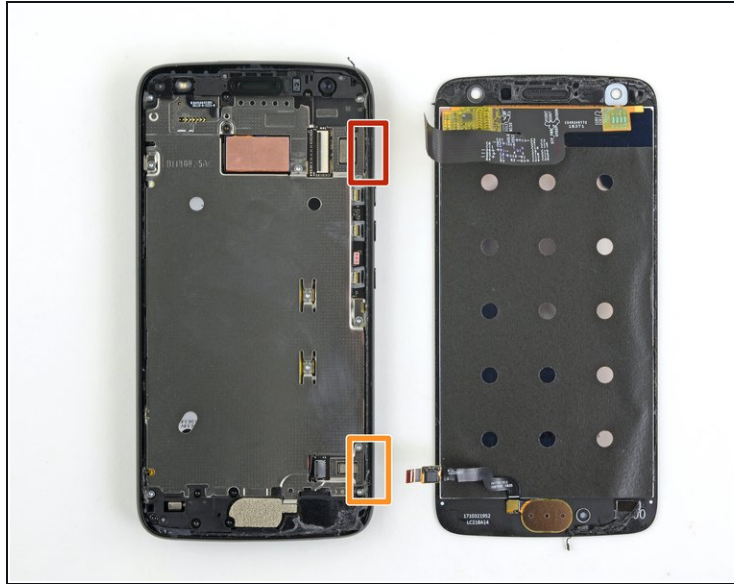
[Suction Handle](#) (1)  
[iFixit Opening Tool](#) (1)  
[iOpener](#) (1)  
[Spudger](#) (1)  
[iFixit Opening Picks \(Set of 6\)](#) (1)  
[T3 Torx Screwdriver](#) (1)  
[T4 Torx Screwdriver](#) (1)  
[Tweezers](#) (1)



## PARTS:

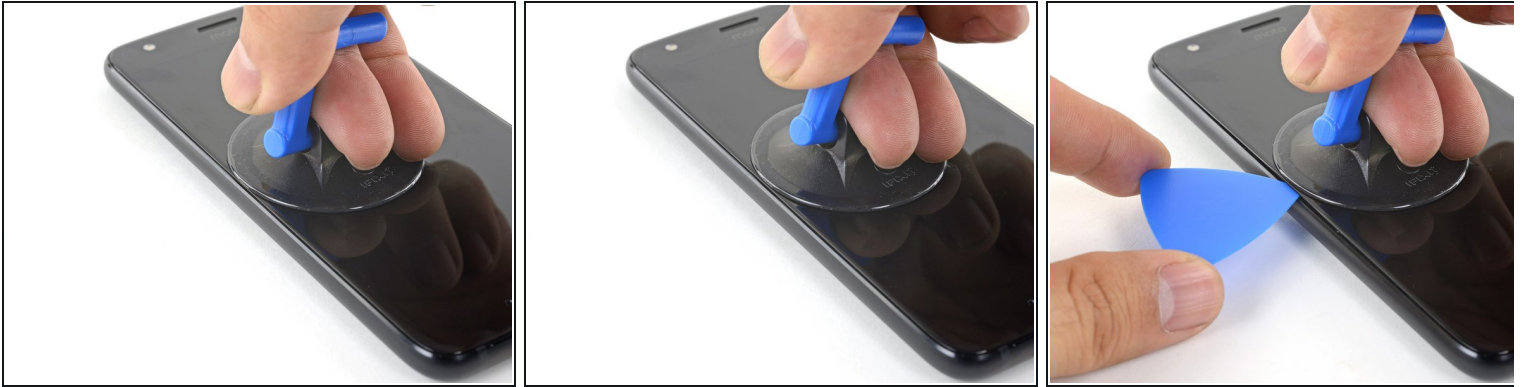
[Moto X4 Display Adhesive](#) (1)  
[Tesa 61395 Tape](#) (1)

## Step 1 — Heat the screen



- ⓘ Before you begin, turn off your phone.
- [Heat an iOpener](#) and apply it to the left edge of the phone for two minutes.
  - ⓘ You may need to reheat and reapply the iOpener several times to get the phone warm enough. Follow the iOpener instructions to avoid overheating.
  - ⓘ A hair dryer, heat gun, or hot plate may also be used, but be careful not to overheat the phone—the display and internal battery are both susceptible to heat damage.
- As you wait, take note of the the following areas:
  - Display cable—be careful not to slice too deeply near the edge here, or you may damage the display cable.
  - Fingerprint sensor cable—be careful not to slice too deeply near the edge here, or you may damage the fingerprint sensor cable.

## Step 2 — Create a gap



- Apply a suction cup to the screen, as close to the heated edge as possible.
- Pull on the suction cup with strong, steady force to create a gap in the seam.
- Insert the point of an opening pick into the gap.
  - ① Depending on the age of your phone, this may be difficult. If you are having trouble, apply heat to the edge and try again.

## Step 3 — Slice the screen adhesive



- Slide the opening pick along the edge to slice through the adhesive.
- Leave an opening pick in the seam to prevent the adhesive from re-sealing.

## Step 4



- Heat the top edge of the phone with an iOpener.
- Carefully slice around the corner and through the top edge to separate the adhesive.

## Step 5



- Heat the screen's right edge with an iOpener.
- Be careful not to slice too deeply near the cables to avoid damaging them.
- Use an opening pick to slice along the right edge to separate the adhesive.

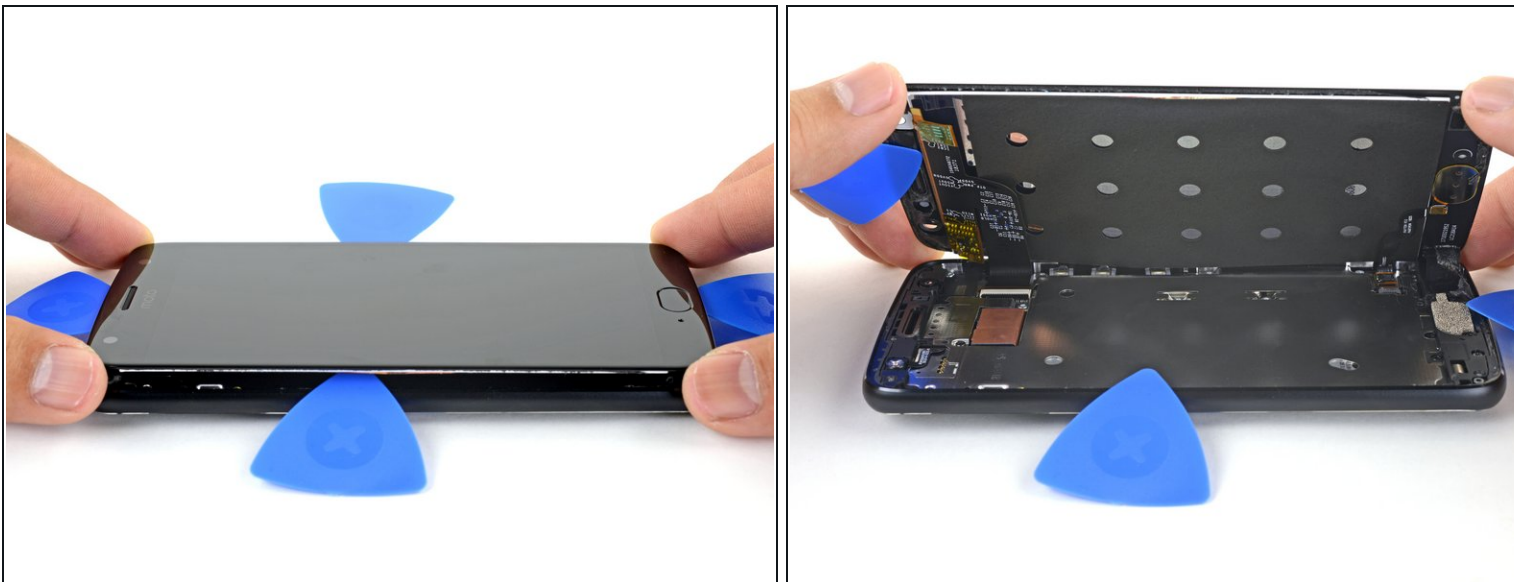


## Step 6



- Repeat the previous steps to heat and slice the bottom edge of the phone.

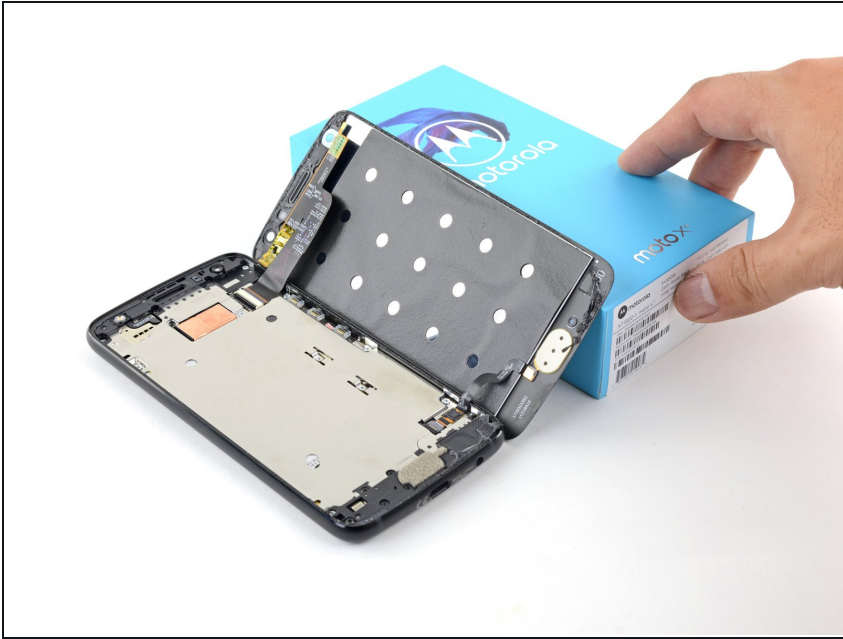
## Step 7



**⚠ Do not try to remove the screen yet—it is still attached to the phone by delicate flex cables.**

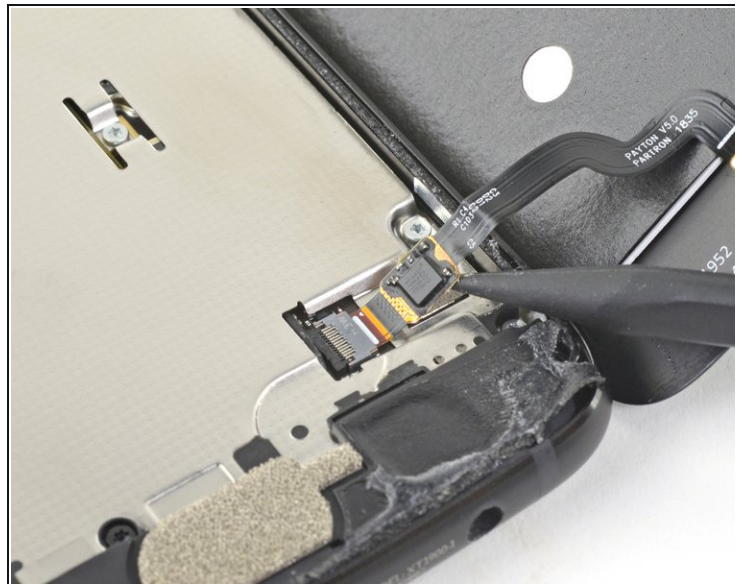
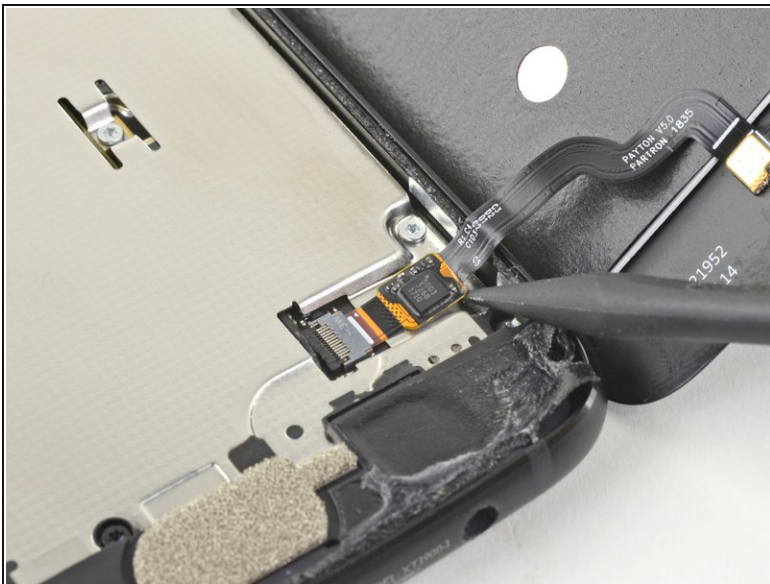
- Carefully lift up the left edge of the screen and cut away remaining adhesives with an opening pick.

## Step 8



- Swing open the screen and prop it up with a small box as you work on disconnecting the flex cables.
- ★ During reassembly, this is a good time to power on your phone and test all functions before sealing it up. Be sure to power your phone back down completely before you continue working.

## Step 9 — Detach the fingerprint sensor cable



- Slide the point of a spudger underneath the fingerprint sensor cable and gently pry up to loosen the cable from the phone.

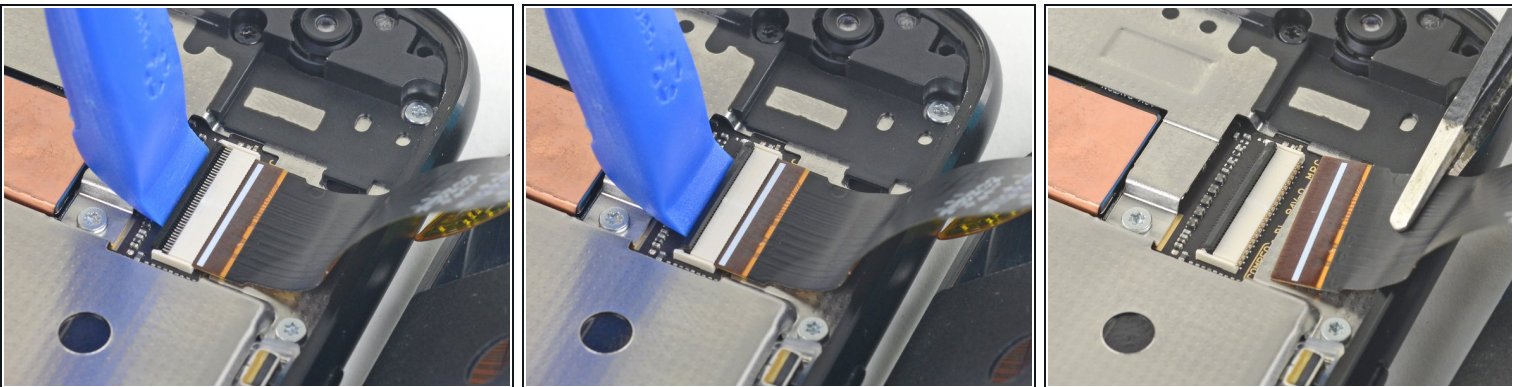
⚠ Do not pull on the cable. It is still attached to the phone by a delicate ZIF socket.

## Step 10 — Disconnect the fingerprint sensor



- Use the point of a spudger to flip up the lock bar on the fingerprint sensor's ZIF socket, near the bottom right of the phone.
- Use tweezers to carefully slide the fingerprint sensor cable out of the socket.

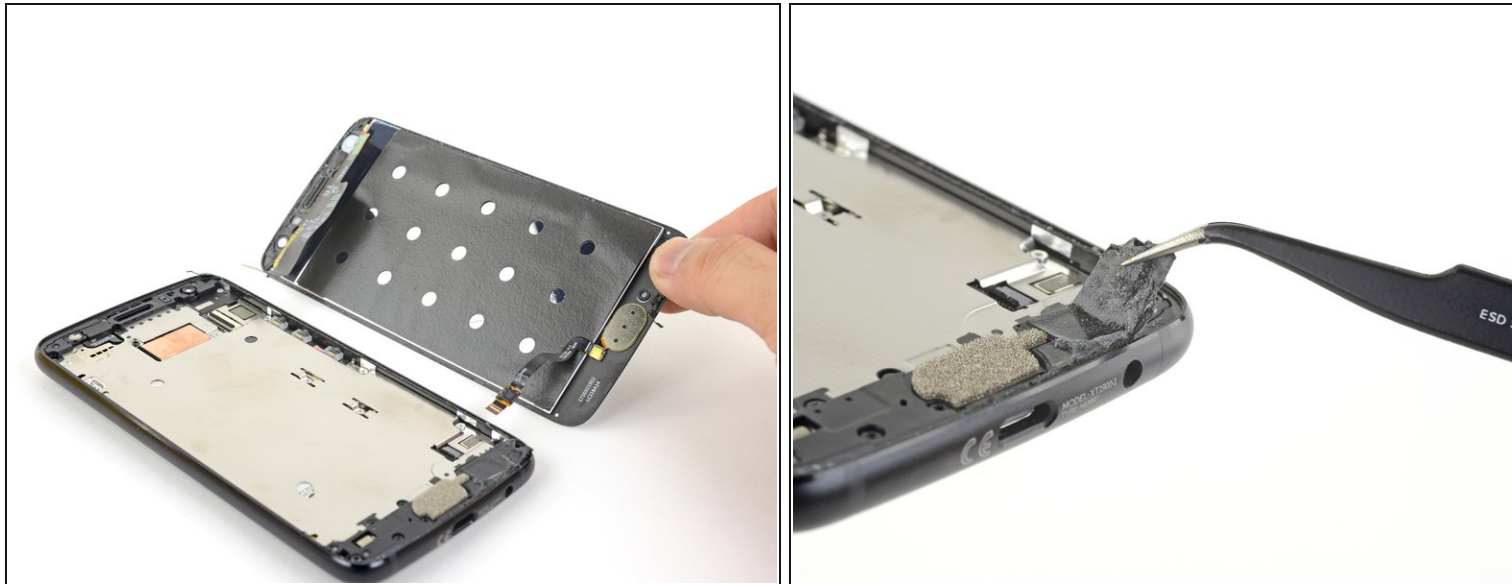
## Step 11 — Disconnect the display cable



- Use an opening tool to flip up the wide lock bar on the display cable's ZIF socket, near the top right of the phone.
- Use tweezers to carefully slide the display cable out of the ZIF socket.



## Step 12 — Remove the screen



- Remove the screen.

✦ During reassembly, [follow this guide](#) to clean the existing adhesive off and install custom-cut adhesives for your phone.

## Step 13 — Unscrew the midframe



- Remove the following twenty screws securing the midframe:
  - Eleven silver 2.7 mm-long T3 screws
  - Nine black 3.6 mm-long T4 screws
- The midframe is still held in place by clips.

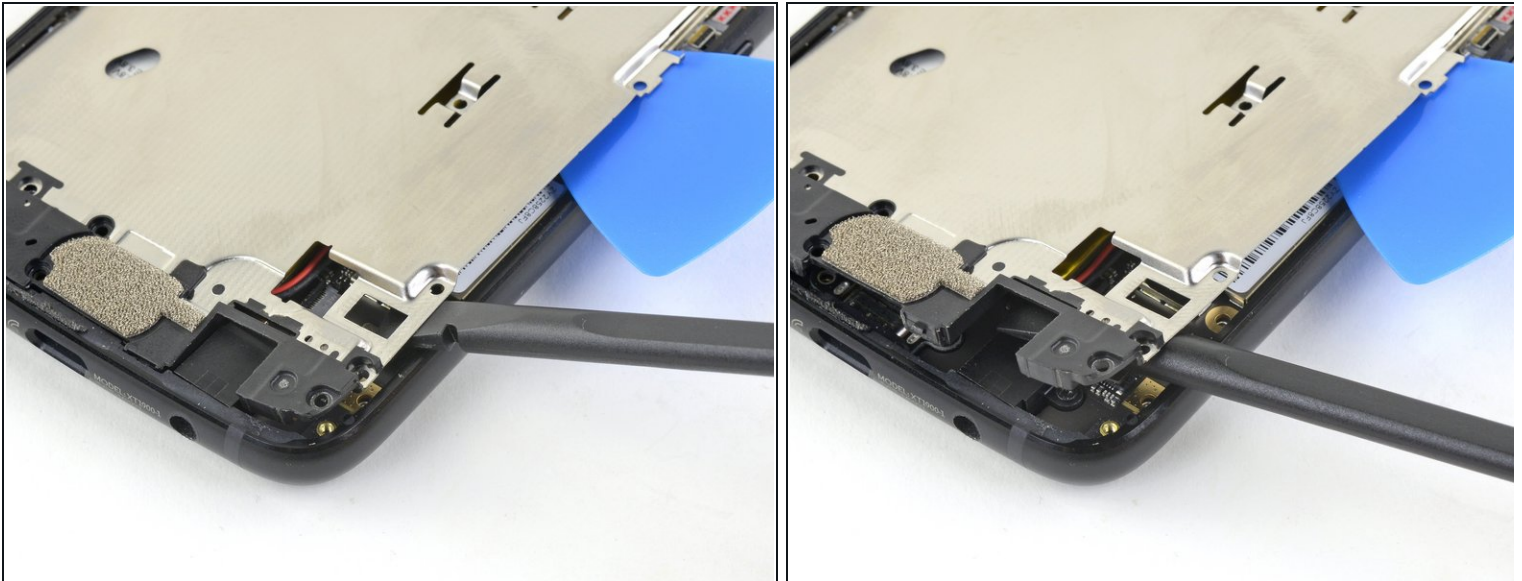
## Step 14 — Loosen the midframe



**i** The next few steps show how to loosen the midframe clips.

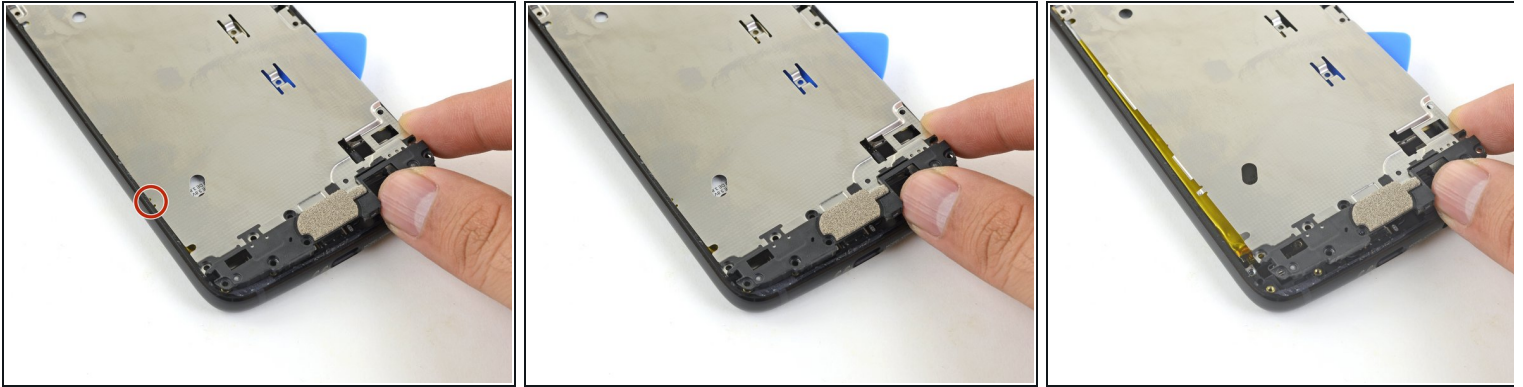
- Insert the flat end of a spudger under the right edge of the metal midframe and pry up to loosen the midframe.
- Insert an opening pick in the edge to hold the midframe in place.

## Step 15



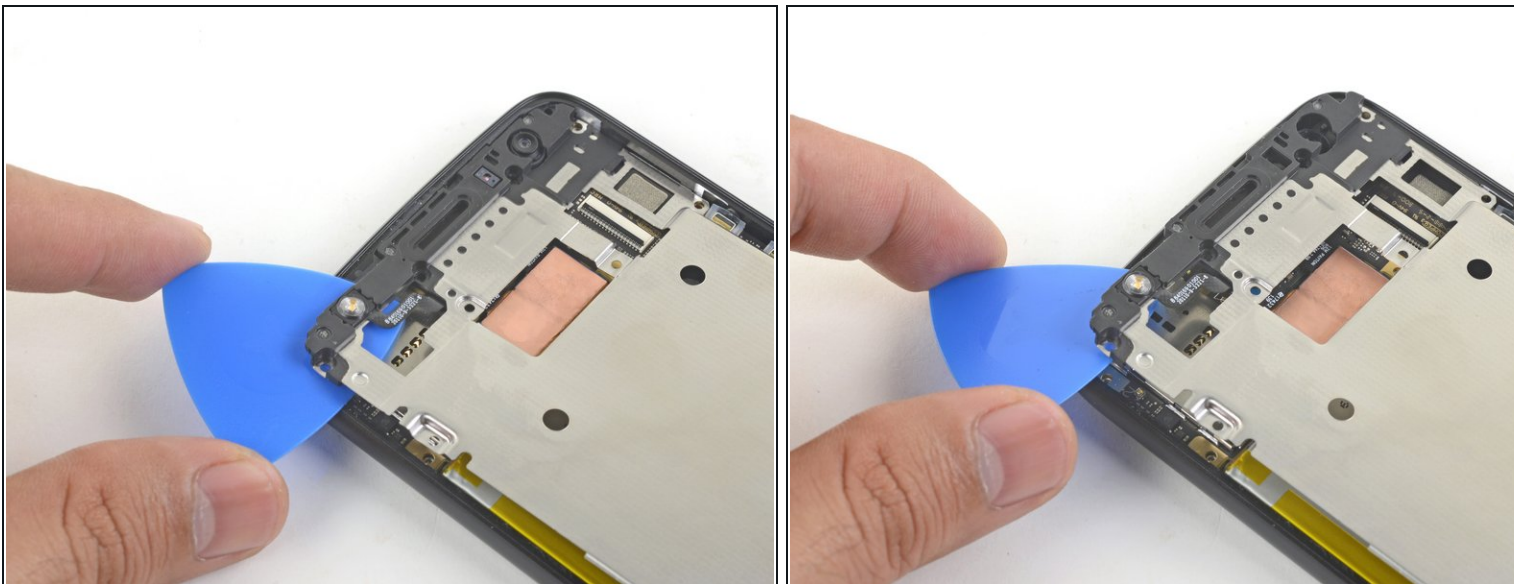
- Insert the flat end of a spudger under the lower right edge of the midframe and pry up to release the midframe clip.

## Step 16



- Grasp the lower edge of the midframe and pull the edge slightly to the right, to clear the metal midframe clip.

## Step 17



- Insert the point of an opening pick under the top left corner of the midframe and twist slightly to release the top clip.



## Step 18 — Remove the midframe

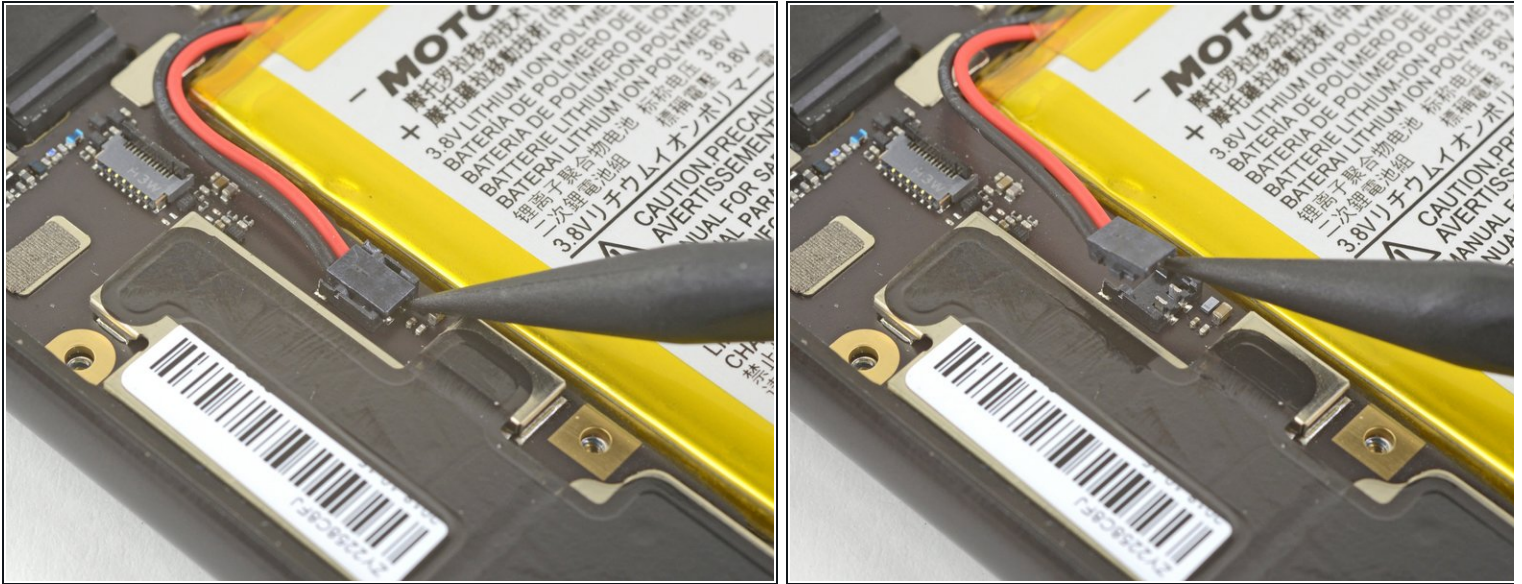


- Remove the midframe.

✦ To reinstall the midframe:

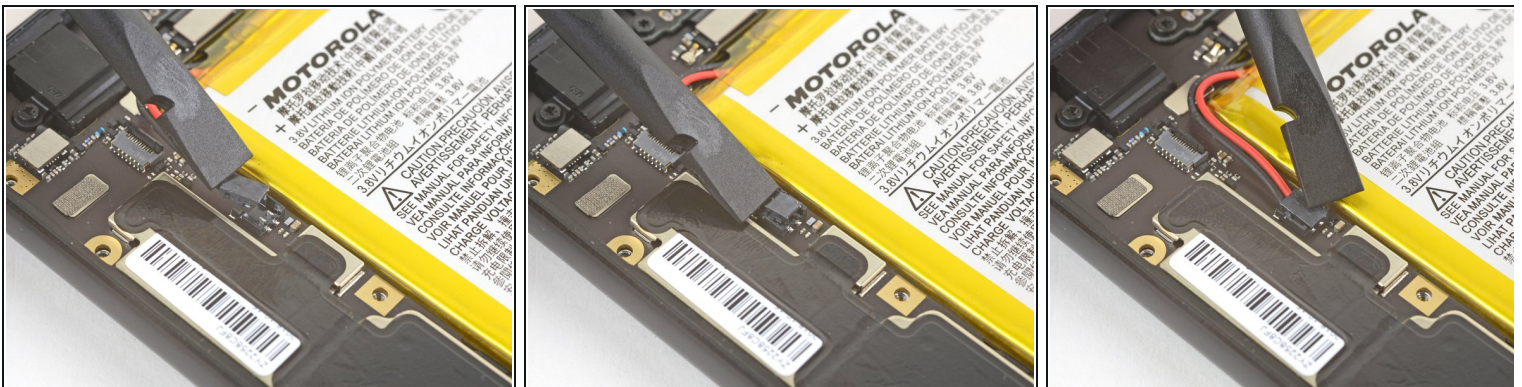
- Align the the midframe's top edge to the phone and press it into position.
- Shift the bottom edge slightly to the left, to maneuver the [left metal midframe clip](#) underneath the phone edge.
- Press the midframe's bottom edge into position.

## Step 19 — Disconnect the battery



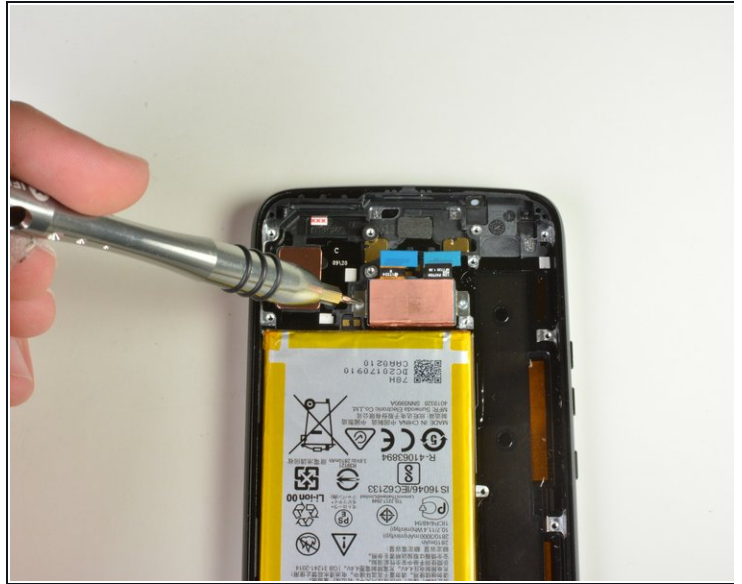
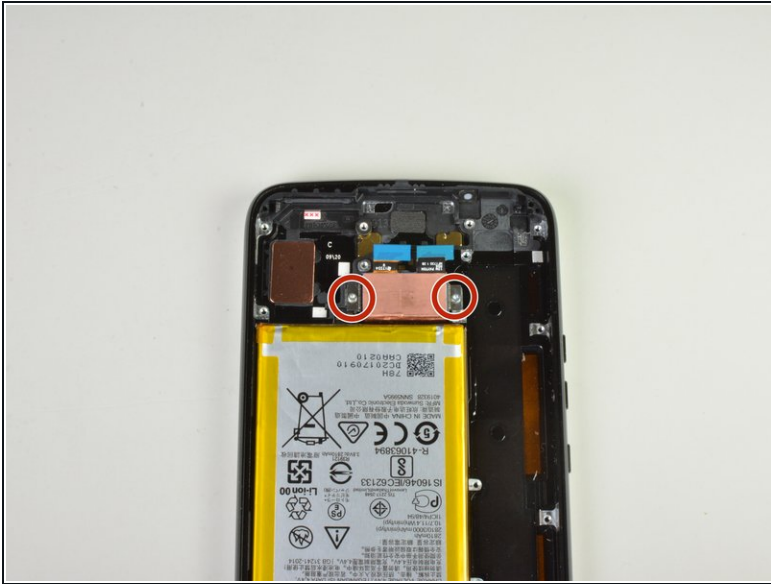
- Insert the point of a spudger underneath the top edge of the battery connector.  
**⚠ Be careful not to dislodge the small surface-mounted components surrounding the socket.**
- Gently pry up the connector to disconnect the battery.

## Step 20



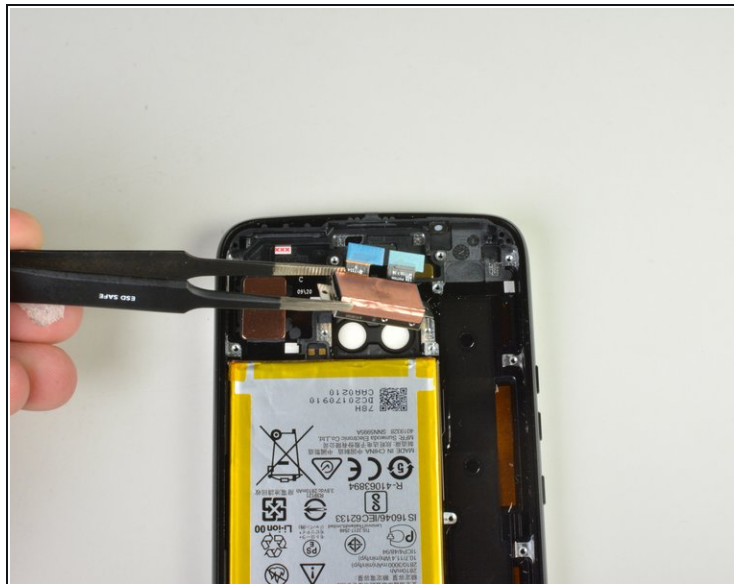
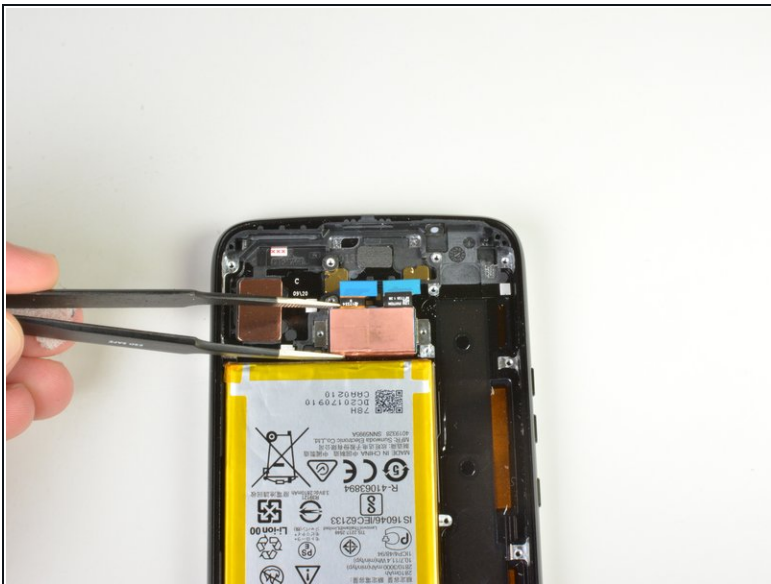
- ☑ To re-connect the battery, align the connector on top of the socket, and press it down with your finger or a spudger.

## Step 21 — Rear Camera



- Using a T3 Torx screwdriver, remove both 1cm screws. To do this, insert the screwdriver into the head of the screw, then turn counter-clockwise.

## Step 22



- Use the tweezers to gently lift the rear camera up and out of your Moto X4.

---

To reassemble your device, follow these instructions in reverse order.

Take your e-waste to an [R2 or e-Stewards certified recycler](#).

Repair didn't go as planned? Try some [basic troubleshooting](#), or ask our [Motorola Moto X4 Answers community](#) for help.