



Motorola Moto G5 Battery Replacement

Follow this guide to replace the Moto G5's...

Written By: Arthur Shi



INTRODUCTION

Follow this guide to replace the Moto G5's rechargeable battery. If your battery is swollen, [take appropriate precautions](#).

Before you begin, download the [Rescue and Smart Assistant](#) app to backup your device and diagnose whether your problem is software or hardware related.

This procedure will not work for the Moto G5S. Be sure to check your phone model before you begin this guide.

For your safety, discharge your existing battery below 25% before disassembling your phone. This reduces the risk of a dangerous thermal event if the battery is accidentally damaged during the repair.



TOOLS:

[Spudger](#) (1)



PARTS:

[Moto G5 Battery - Genuine](#) (1)

Step 1 — Back Cover



- Insert your fingernail or the flat end of a spudger into the notch on the bottom edge of the phone near the charging port.
- Pry with your fingernail or twist the spudger to release the back cover from the phone.

Step 2



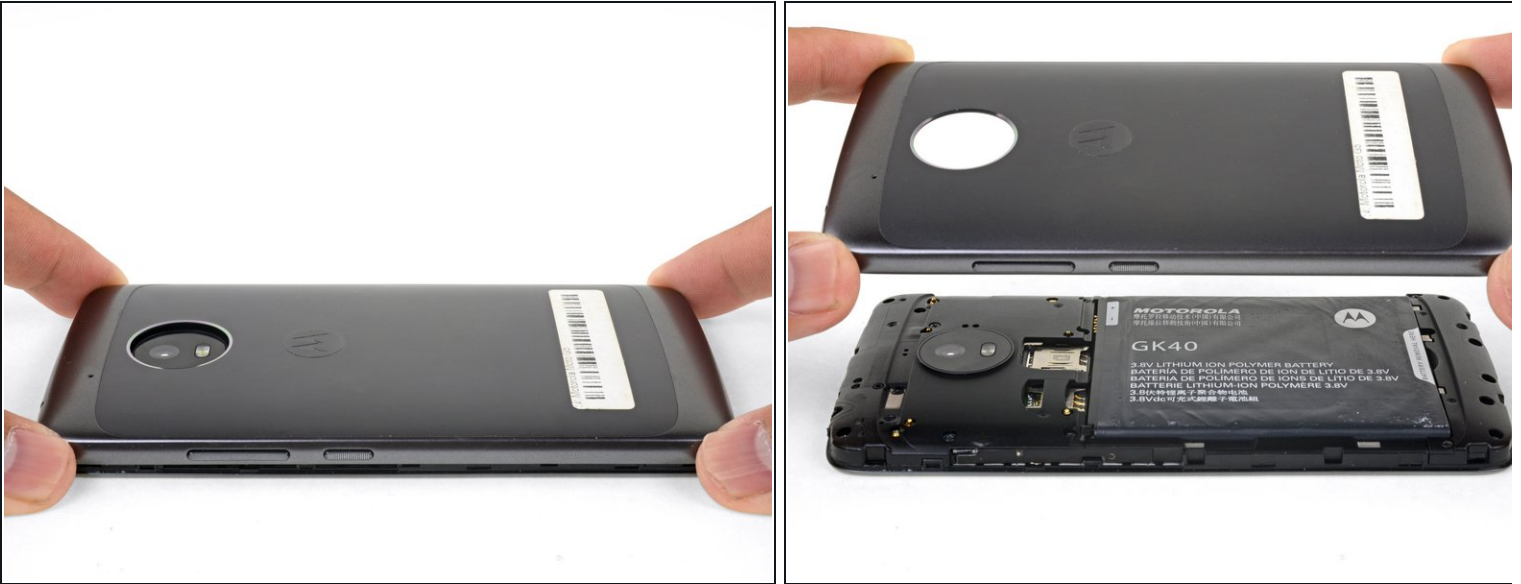
- Insert the flat end of a spudger into the seam and slide it along the bottom edge to release the clips holding the back cover to the phone.

Step 3



- Continue sliding the flat end of the spudger along the seam for the remaining sides of the phone.

Step 4



- Lift the back cover and remove it from the phone.
- ✦ To reinstall the back cover, align the cover with the phone and squeeze along the edges to snap the clips back into place.

Step 5 — Battery



- Insert your fingernail or the flat end of the spudger into the notch below the battery.
- Pry with your fingernail or spudger until you free the battery from its recess.

Step 6



- Remove the battery.
- ☑ When installing the battery, make sure the battery's contacts line up with the three gold pins on the top right.

To reassemble your device, follow these instructions in reverse order.

After completing this guide, [calibrate your newly-installed battery](#).

Take your e-waste to an [R2 or e-Stewards certified recycler](#).

Repair didn't go as planned? Check out our [Motorola Moto G5 Answers community](#) for troubleshooting help.