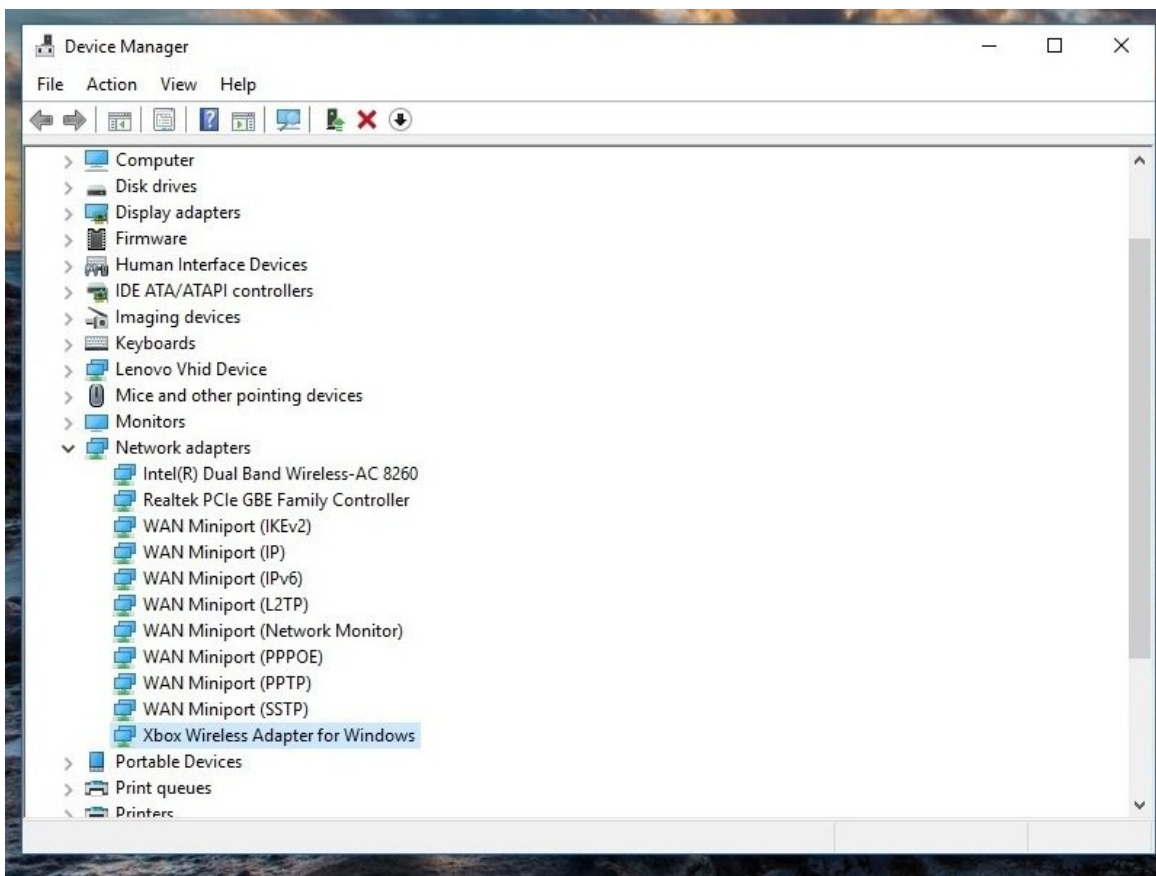




# How to install the Xbox One Wireless Receiver (1713, Windows 10/11)

READ: I have confirmed these same steps apply...

Written By: Nick



## INTRODUCTION

**READ:** I have confirmed these same steps apply to Windows 10 and Windows 11 with no process changes. However, this guide was authored in 2018 so Windows 10 was used at the time. As such multiple "end of life" dates will apply:

**Windows 10:**

- On-guide support ends (Windows 10): 1/1/2024
- Author support ends (Windows 10): 1/1/2025 (Microsoft EOL: 10/14/25)

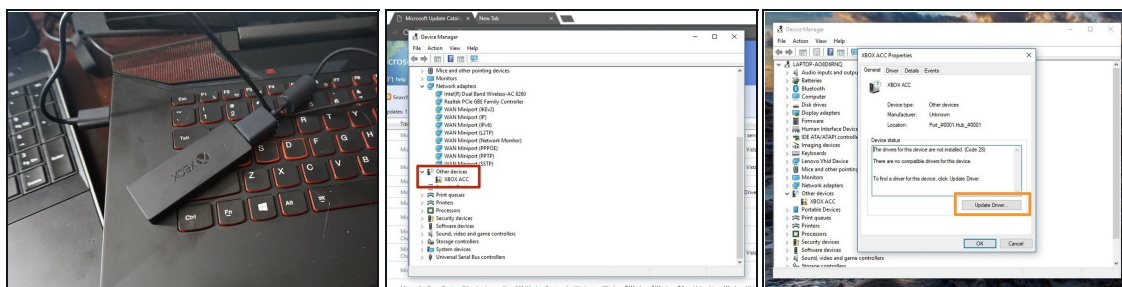
**Windows 11: TBD, no EOL set by Microsoft at this time.**

If you purchased an original Xbox Wireless Receiver for Windows and are having issues using it in Win10/Win11, this guide will show you how to install the driver manually if it is not automatically picked up. While these older adapters generally do not have issues in Windows 10 as often (it happens, but far less often), Windows 11 may require some manual assistance as I have observed a few instances where it was not as "plug and play" as the receiver is when using Windows 10.

## Guide notes

- In most cases, Windows 10 will "just work". If it does not automatically pick up and install the driver, manual installation may be required. ***This improvement is the result of Microsoft considering Xbox accessory compatibility in Windows 10/11 and not retroactively adding it as was the case in 7/8.x (which was the cause of most of the older driver install problems).***
- ***Windows 11 can sometimes struggle with the automatic installation process, needing help from Windows Update. This is likely due to time and focus on the "slim" adapter (as well as BT support in 10/11) resulting in less need to use this adapter when Bluetooth has been supported for several generations, somewhat negating the need for it. I found no other issues when testing in 11 at that time.***
- ***If you use Windows 7/8.x, refer to the guide made for these OSes specifically (NOTE: no longer supported or updated by the guide author due to Windows 7/8.x being EOL, this guide remains available "as-is").*** The process is split into two guides due to driver and process changes unique to 7/8.x systems.
  - ***NOTE: I did not get an initial install prompt, and do not know how to re-trigger it. As I used this laptop to test my steps prior it will not be visible but may show for you. I do not know how to trigger the initial installation window manually.***

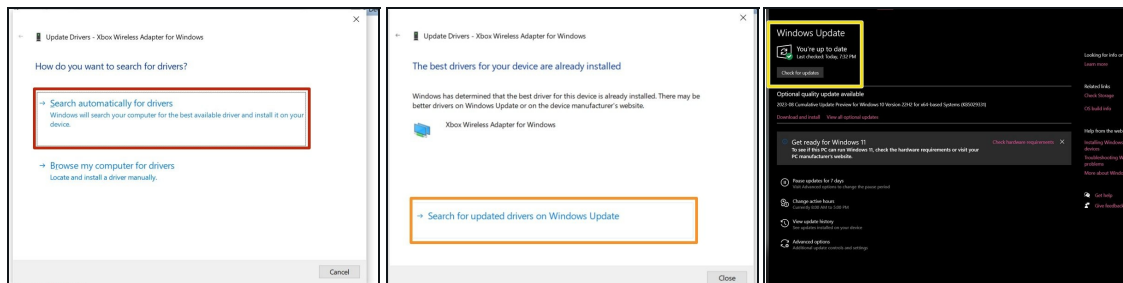
### Step 1 — Plug and play/Windows update



**⚠ If you have the Model 1790 (Slim) receiver, you must use the Xbox - Net - 10.46.1 driver.**

- Plug your Xbox Wireless Receiver into your PC. Proceed further if the automatic installation fails.
- Locate **Other Devices**. Without a driver installed, the receiver will be found here.
- Double click **XBOX ACC** and check for **Code 28**. Click **Update Driver** and you will see a window with two options.
- Before manually installing the driver, select **Search automatically for updated driver software**. Install the driver manually if this fails.

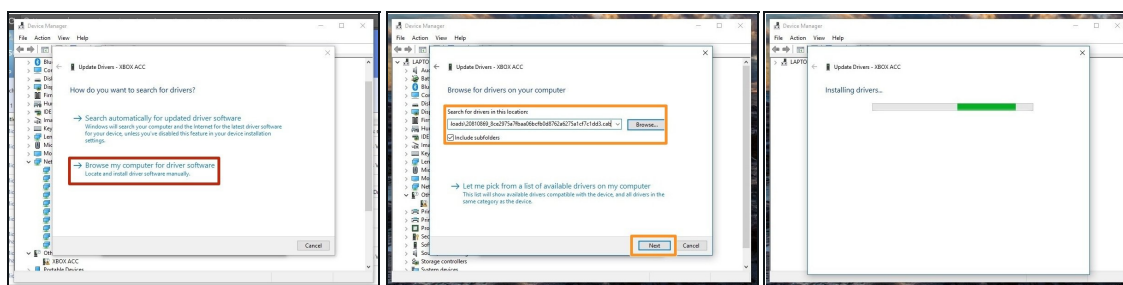
## Step 2 — Plug and play/Windows update



⚠ Unlike Windows 7/8.x, this is usually not an issue. However, Windows 11 may need help from Windows Update if the automatic Device Manager search fails. This is not as common in Win10.

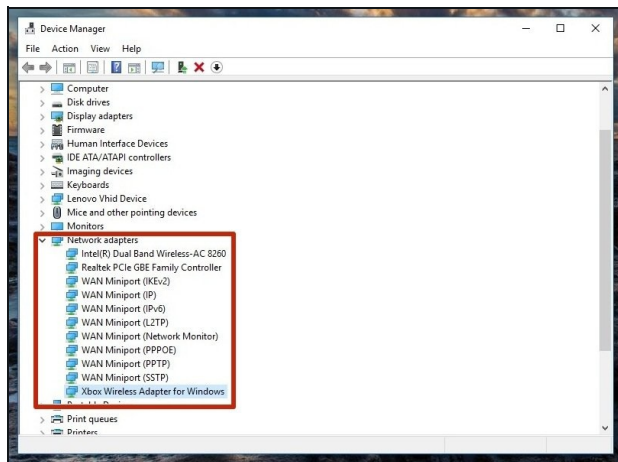
- **NOTE:** "Virgin" installation messaging may be slightly different. This adapter has been used in my laptop before. Select **Search automatically for drivers**.
- **NOTE:** THESE STEPS ARE NOT SHOWN ON MY COMPUTER AS IT HAS ALWAYS WORKED ON THE FIRST TRY IN WIN10. Click **Search for updated drivers on Windows Update**. Once this is done, the driver will be installed.
- Click **Check for updates** to ensure the driver will download if the system is unresponsive. Once completed, the receiver should work.

## Step 3 — Manual/Driver installation



- **Note:** Search **Xbox Wireless** if the link does not work. Download the driver from the [Microsoft Update Catalog](#). Select the following driver: **Microsoft - Net - 8/26/2015 12:00:00 AM - 19.16.17.976** or **Microsoft - Other hardware - Xbox Wireless Adapter for Windows**. Unzip the file with [7Zip](#).
- Select **Browse my computer for driver software**.
- Locate the folder where the driver is located and select **Copy address as text**. Paste the location into the search box. **Click Next**.

## Step 4 — Verify the driver installation



- To verify the driver was installed correctly, check under **Network Adapters**. If the driver was installed correctly, it will show up here.