



Xbox One X Project Scorpio Edition BD-ROM Drive Replacement

Removing the BD-ROM Drive for the Xbox One X Project Scorpio Edition gaming console made by Microsoft in 2017.

Written By: Ashley Masuda



INTRODUCTION

This guide covers how to remove the Blu Ray disk drive in the Xbox One X. This is a straightforward process once the outer shell of the Xbox has been removed.



TOOLS:

- [T9 Torx Screwdriver](#) (1)
 - [Precision Tweezers Set](#) (1)
-

Step 1 — Outer Case



- Use a T9 Torx screwdriver to remove the 13mm screw which is under and to the left of the power input.

Step 2



- Using precision tweezers, remove the screw tab located on opposite side of the box.
- Use a T9 Torx screwdriver to remove the 13mm screw revealed underneath the tab.

Step 3



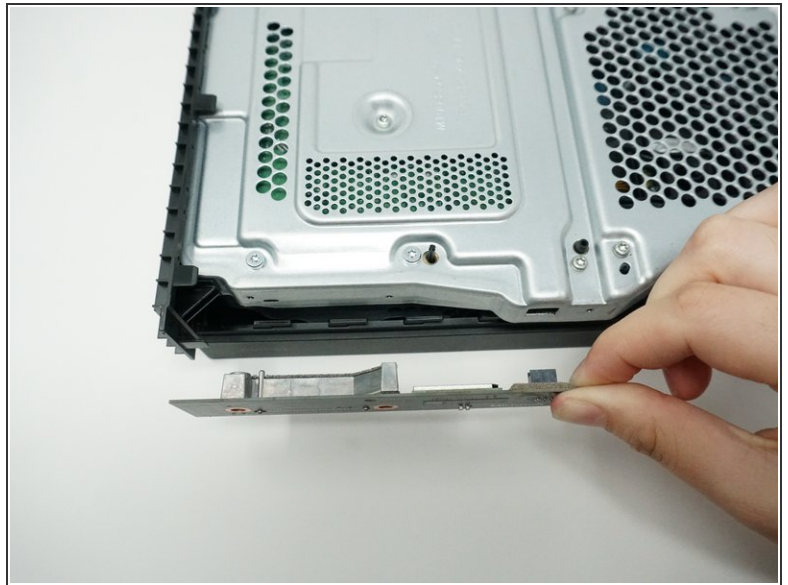
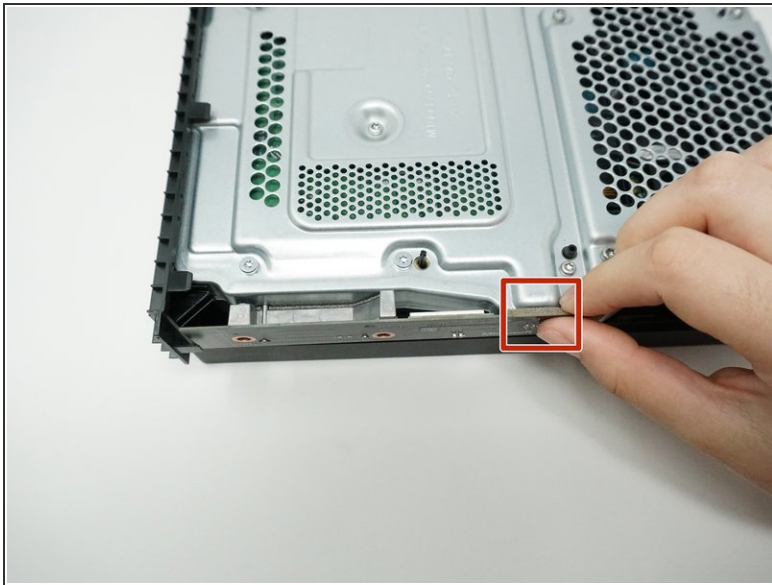
- Orient the case so that the front of the Xbox (the side with the power button) is facing you.
- Remove the top of the case by sliding the case towards you.

Step 4




- Using a T9 Torx screwdriver, remove the two 15mm silver screws that are holding a circuit board/panel to the side of the interior metal casing.
- Using the same screwdriver, remove the 9mm black screw located farther to the right on the same circuit board/panel.

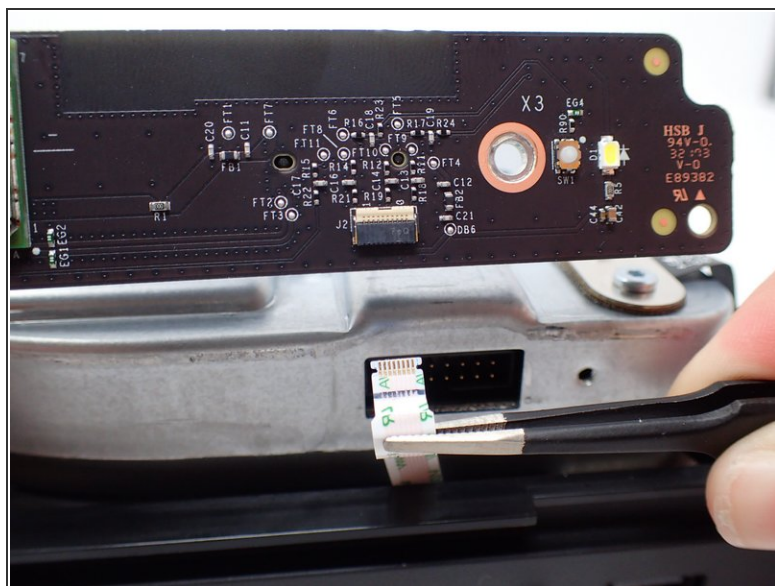
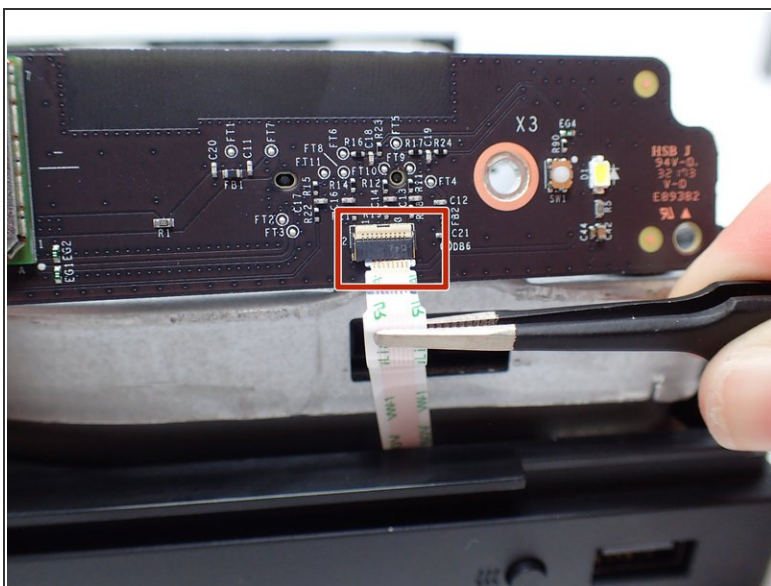
Step 5



- Remove the unscrewed panel from the side of the device by pulling it toward you.

 Be mindful of the connector, as it is fragile.

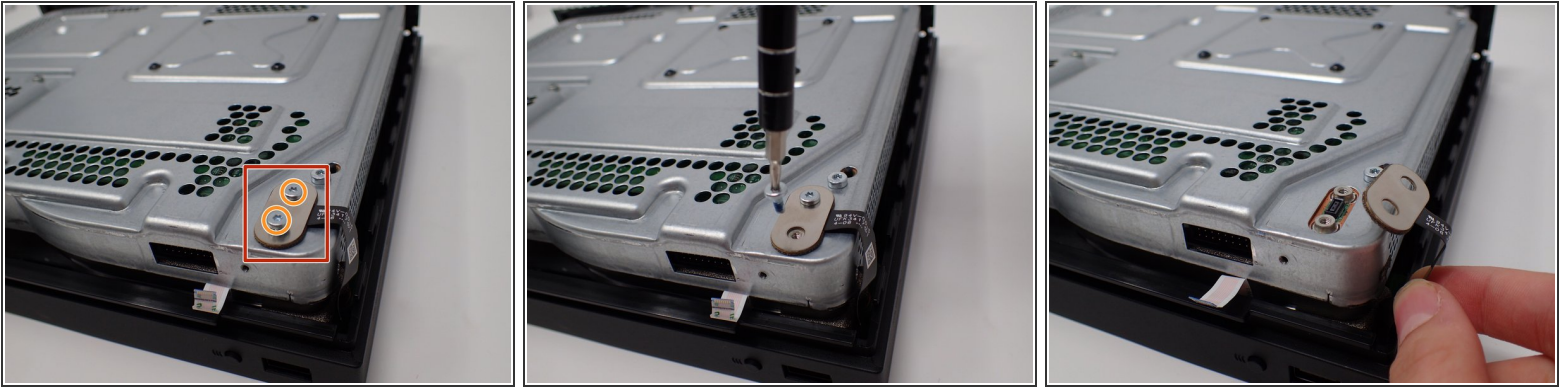
Step 6



- Pull the upper edge of the white clip down, and then remove the white connector from the dislocated panel using precision tweezers.

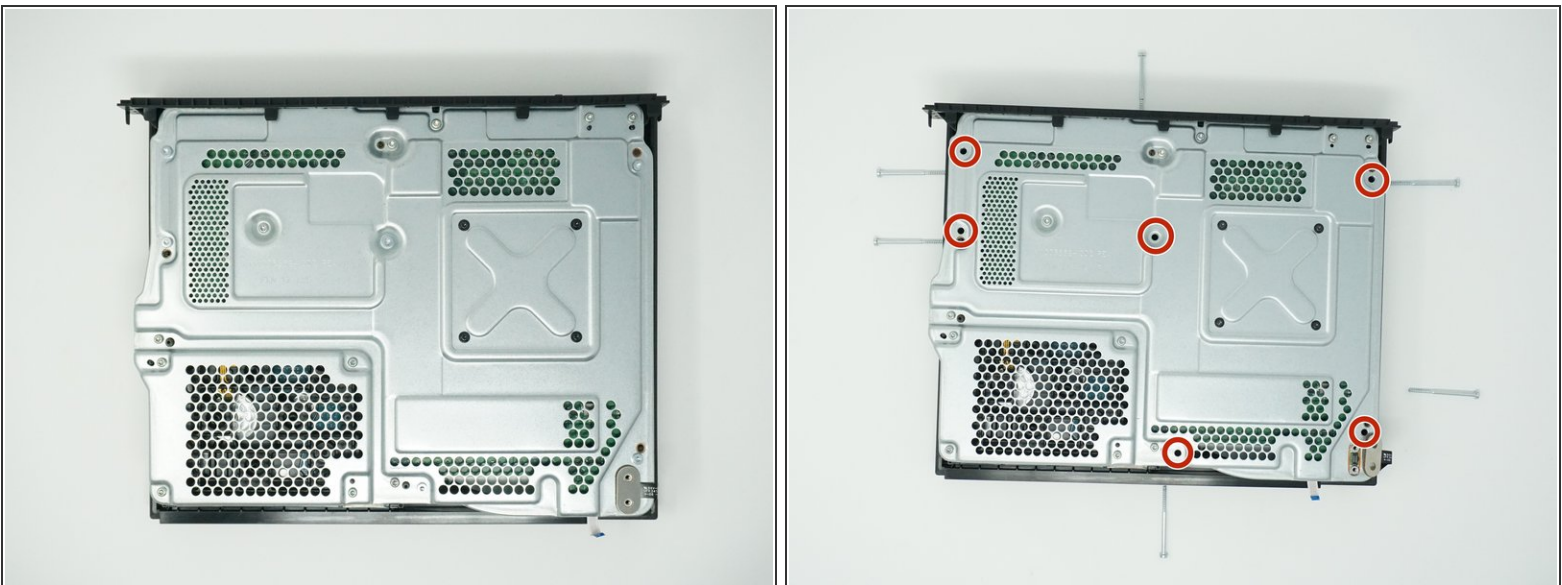
i Do not force the connector out, as it is fragile. Wiggling may be necessary.

Step 7



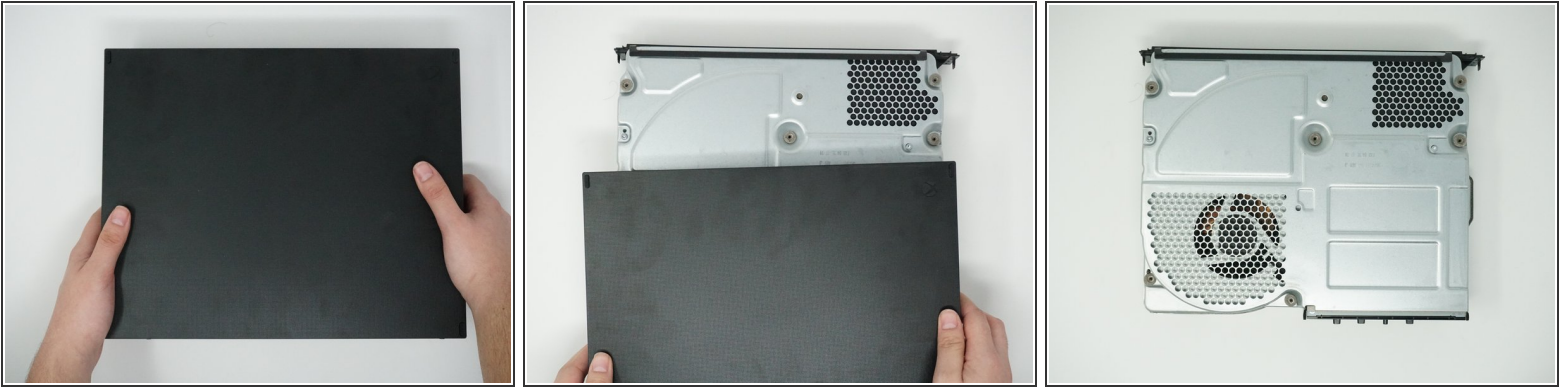
- On the top of the device in the corner directly above the white connector, there is an oval plate held in place by two screws.
- Remove both of these 7mm screws with a Torx T9 screwdriver.
- Lift the detached plate off to the side.
- The plate is still connected to the device.

Step 8



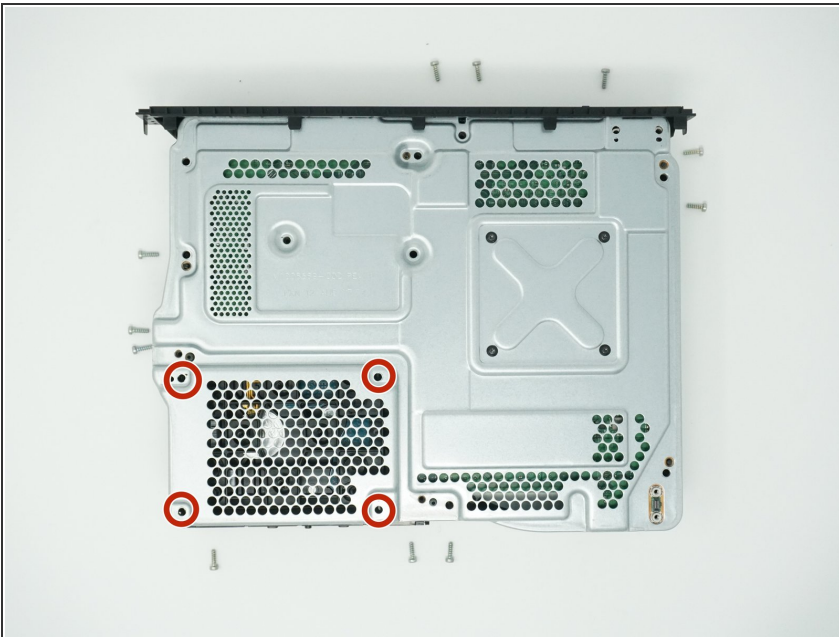
- Use a Torx T9 screwdriver to remove the six 47mm long screws, which attach the bottom side of the outer case.

Step 9



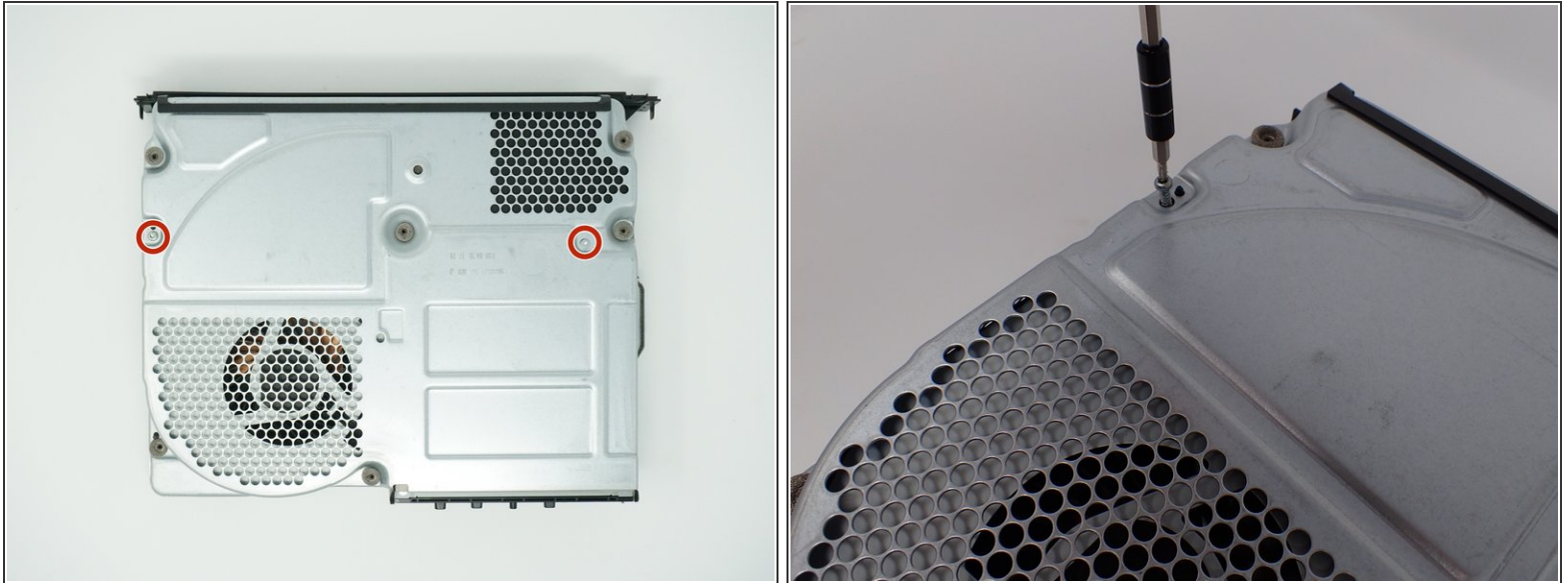
- Turn the Xbox over, so that the bottom of the case is on top.
- Lift the bottom of the case off of the Xbox by pulling it up and toward you.

Step 10 — BD-ROM Drive



- Flip over the device again, so that the top is facing upwards.
- Remove the 4 smaller 11mm screws in the lower left corner on the metal casing using a Torx T9 screwdriver.

Step 11



- Flip over the device again, so that the bottom is facing upwards.
- Using a Torx T10 screwdriver, remove the two screws located on opposite sides of the metal casing. One is near the fan vent, and the other is near the power supply vent.
- ⓘ The left screw is 11mm and the right screw is 7.5 mm.

Step 12



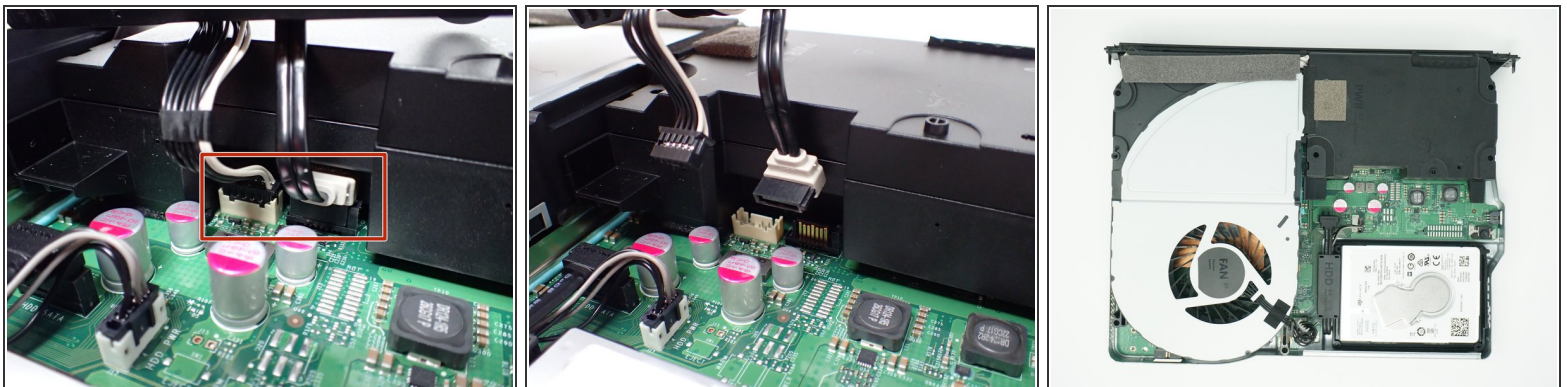
- Remove the metal casing by pulling it upward, revealing the interior components of the device.

Step 13



- Lift and rotate the BD drive to reveal the wires that connect it to the motherboard.

Step 14



- Using your fingers, gently unplug the two sets of wires connecting the drive to the motherboard.
 - Alternatively, you can disconnect the wires from the drive-side sockets. This is much easier if you have not removed the power supply.
- The BD drive should now be completely detached from the rest of the device, and it can be set aside.

To reassemble your device, follow these instructions in reverse order.