



Shark Rocket Powerhead AH401 Filter Grille Replacement

This guide will show you how to replace a damaged Filter Grille and how to gain access to the Post-Motor filter.

Written By: Shobhit Dabral



INTRODUCTION

This guide will show you how to replace the filter grille if it becomes damaged, does not remain in place, or if you need to reach the Post-Motor filter.




PARTS:

- [Filter Grill](#) (1)
 - [Post-Motor Filter](#) (1)
-

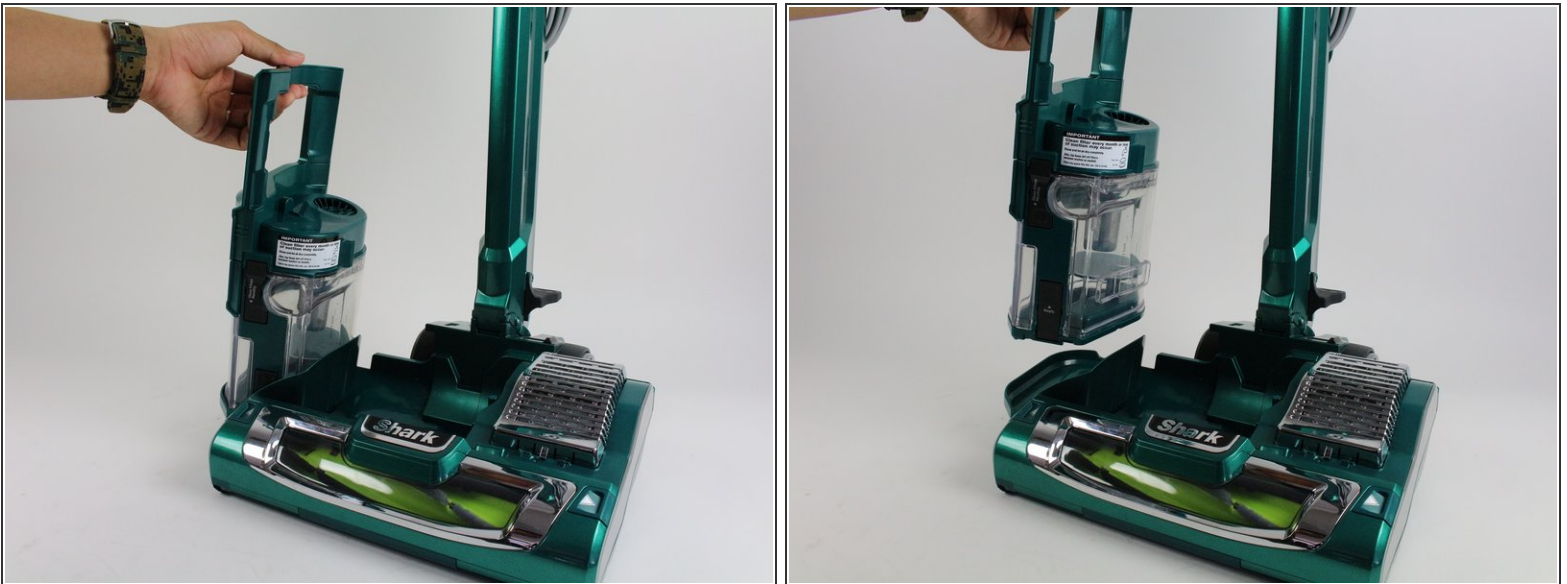
Step 1 — Dust Cup



 Ensure the device is turned off and unplugged from any power source before beginning work.

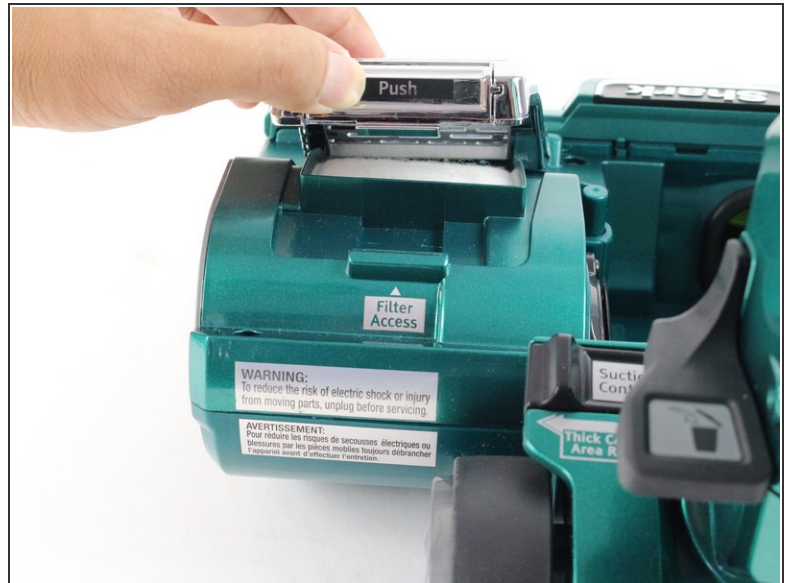
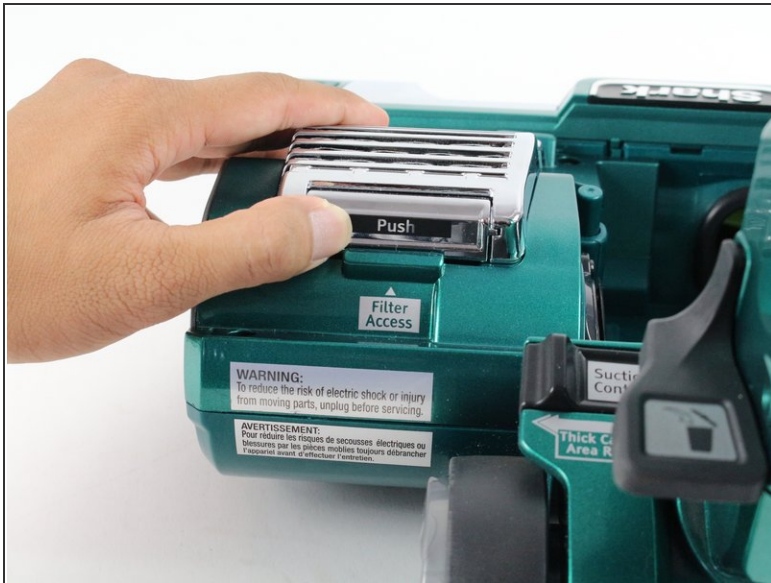
- Push down on the dust can lever to release the dust can in order to get to the filter grill.

Step 2



- Remove the dust cup by lifting it off the dock.

Step 3 — Filter Grille



- Push inward on the top of the filter grille where it says "Push."
- Lift the filter grille upward.

Step 4



- Lift gently and pull the grille up towards you until it releases.
- ❗ The post-motor filter is underneath the filter grille.

To reassemble your device, follow these instructions in reverse order.