



LG G Vista Screen Replacement

This guide will teach you how to replace the...

Written By: Key Baker



INTRODUCTION

This guide will teach you how to replace the screen on your LG G Vista. The screen of the device won't physically detach, and you will be left with the entire display assembly instead.



TOOLS:

[Phillips #000 Screwdriver](#) (1)

[Tweezers](#) (1)

[Small Plastic Spudger](#) (1)



PARTS:

[LG G Vista Replacement Screen](#) (1)

Step 1 — Battery



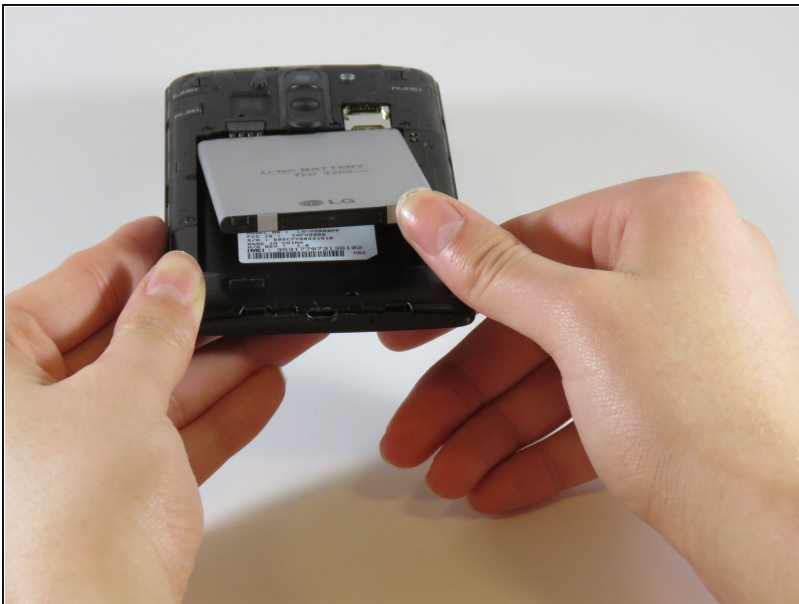
- Make sure the device is powered off.

Step 2



- Remove the back cover by gently prying open the case of the device from the charging port.

Step 3



- Lift the battery out of its place by prying up from the small notch at the base of the battery.

Step 4 — Screen



- Using a Phillips #000 screwdriver, remove all eleven 3.0 mm screws from around the perimeter of the phone.

Step 5



- Use a plastic spudger or opening tool and run it along the seam of the upper cover.
- Carefully remove the cover from the device.

Step 6



- Use the same method to pry off the hard shell covering at the bottom.

Step 7



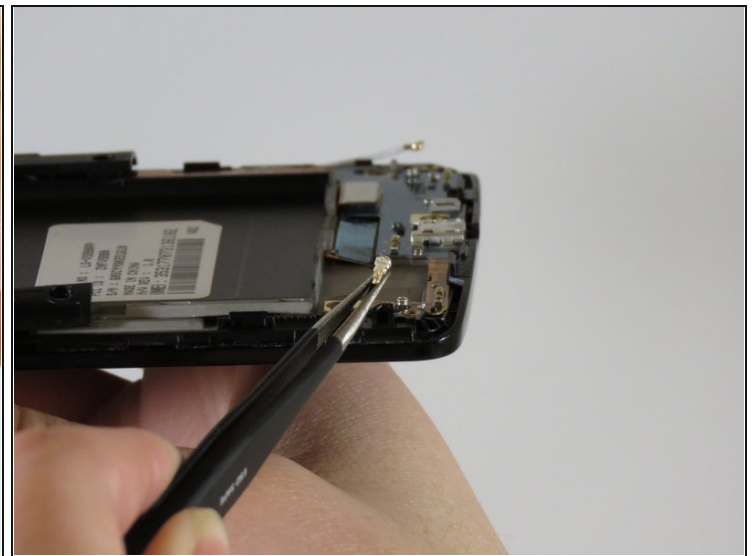
- Remove the two 1 mm Phillips #000 screws.

Step 8



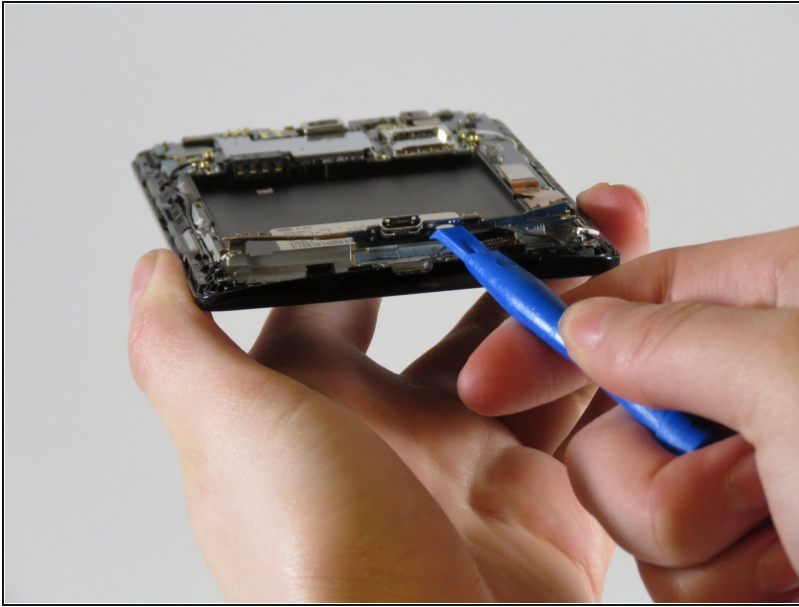
- Gently using [tweezers](#), disconnect the connector that is on the bottom right.

Step 9



- Gently unplug the antenna wires on the bottom left and right sides of the device.

Step 10



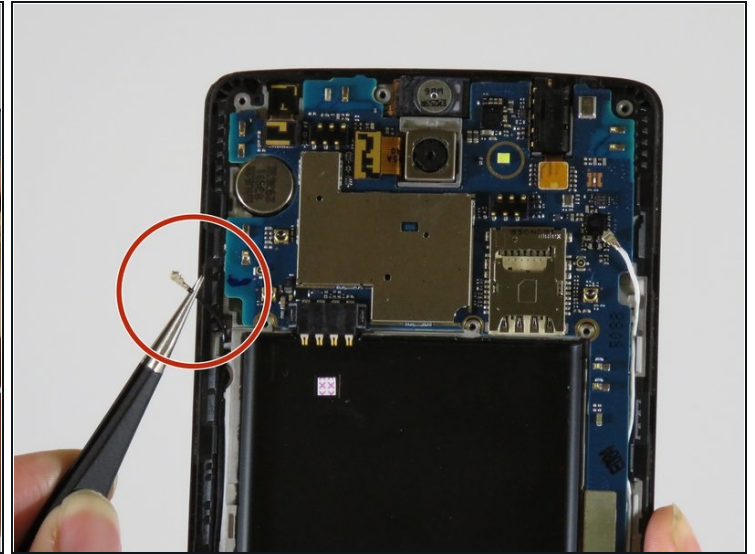
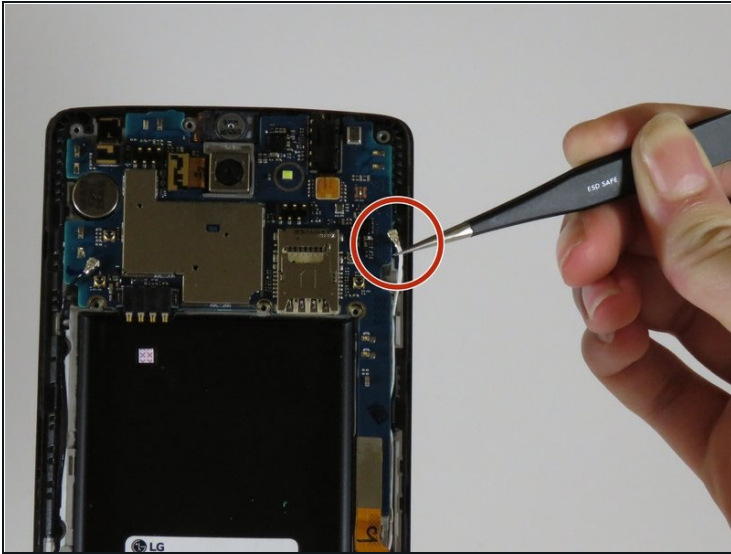
- With your plastic opening tool, gently lift up the bottom edge of the exposed charging port, sliding along the edge until it lifts out.

Step 11



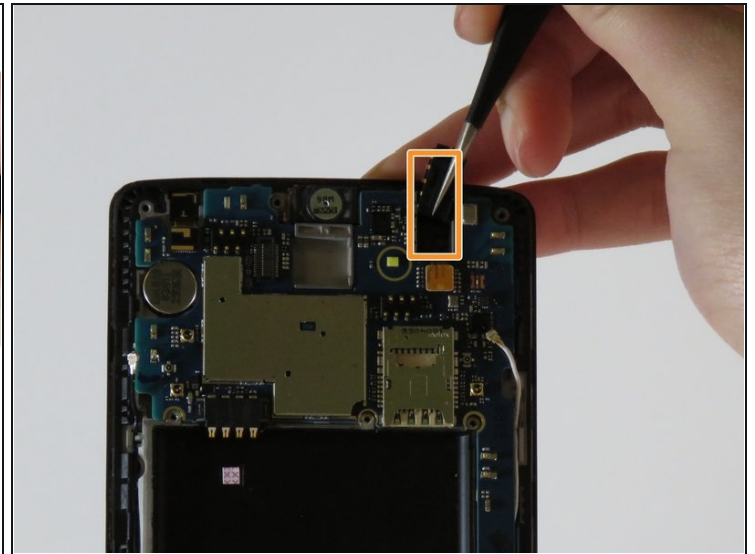
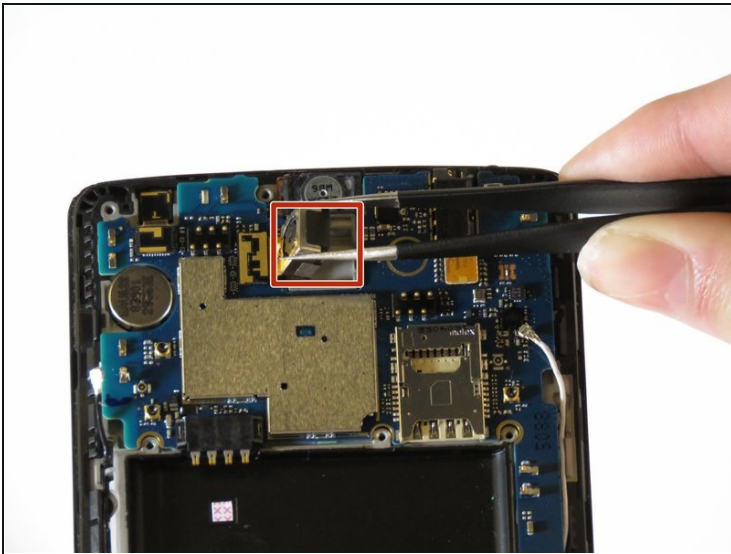
- Using tweezers, unplug the four connectors.

Step 12



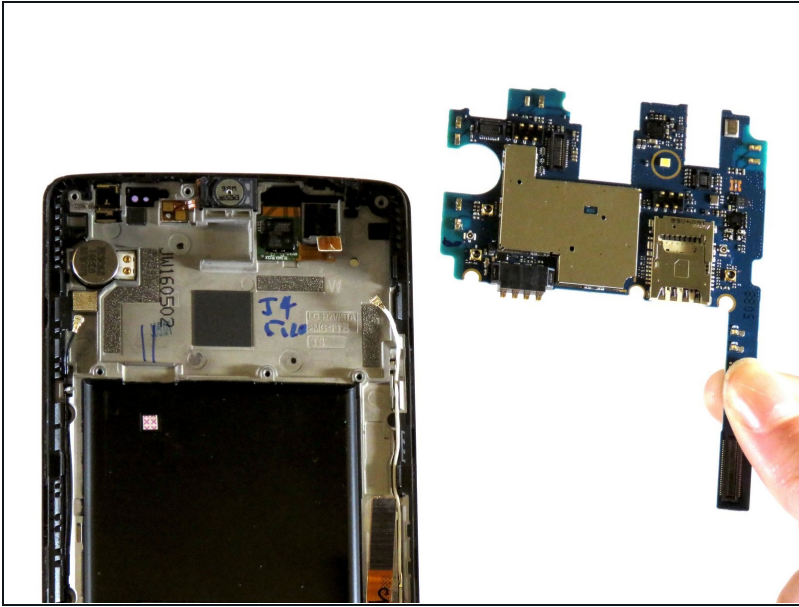
- Remove the antenna wires on both sides of the device.

Step 13



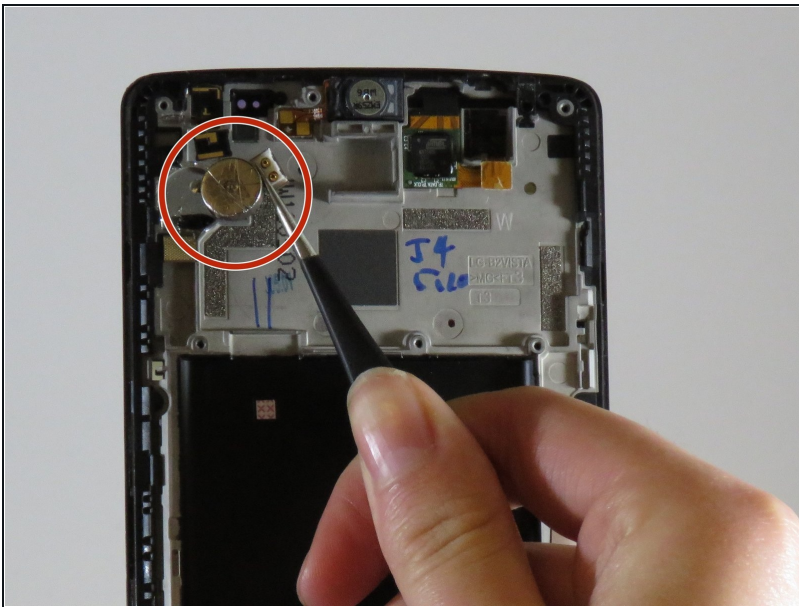
- Carefully lift out the back camera from the device.
- Lift out the headphone jack in the upper right side of the device.

Step 14



- Remove the motherboard from the phone.

Step 15



- Remove the vibration motor from the device.
- ① You will be left with the entire display assembly of the device.

To reassemble your device, follow these steps in reverse order.