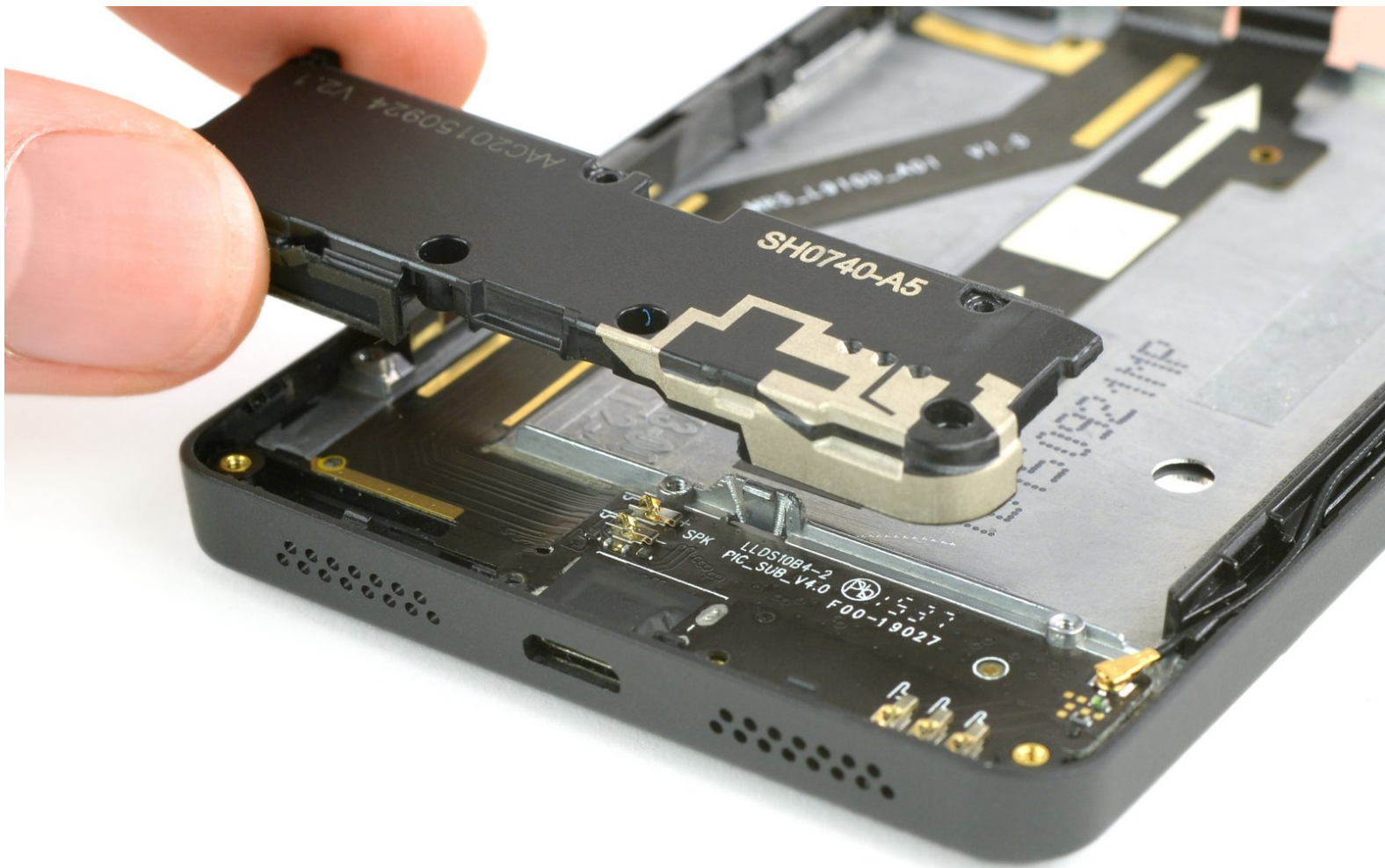




# Aquaris M5 Loud Speaker Replacement

This guide shows you how to replace the loud speaker unit of your bq Aquaris M5

Written By: Theo Mat



---

# INTRODUCTION

Use this guide to replace the loud speaker in your bq Aquaris M5.



## TOOLS:

- [iFixit Opening Tools](#) (1)
  - [Spudger](#) (1)
  - [Phillips #00 Screwdriver](#) (1)
-

## Step 1 — Back Cover



- Insert the tip of an iFixit opening tool between the back cover and the mid frame of the phone.
  - ⓘ Between the 2 SIM card slots is a good place to start.
- Slide the opening tool to the bottom of the phone, to snap out the plastic clips, connecting the back cover and mid frame.


## Step 2



- Slide the opening tool back to the top of the phone, to disconnect all the clips on the edge.
- Slide around the corner and along the top edge, to also disconnect these clips.

## Step 3



 Be careful not to bend the back cover too hard to prevent some of the clips breaking.

- Grab the back cover by the loosened edge.
- Gently bend and twist the flexible back cover a bit to disconnect the remaining clips.
- Take off the back cover.



## Step 4 — Battery



- ❗ Damaging the liquid indicator sticker, on the middle most screw, will void the warranty of the phone.
- Unscrew the ten black 4mm Phillips #00 Screws from the mainboard shield.
- Unscrew the golden 3.4mm Phillips #00 screw on the middle-right side of the mainboard shield.

## Step 5



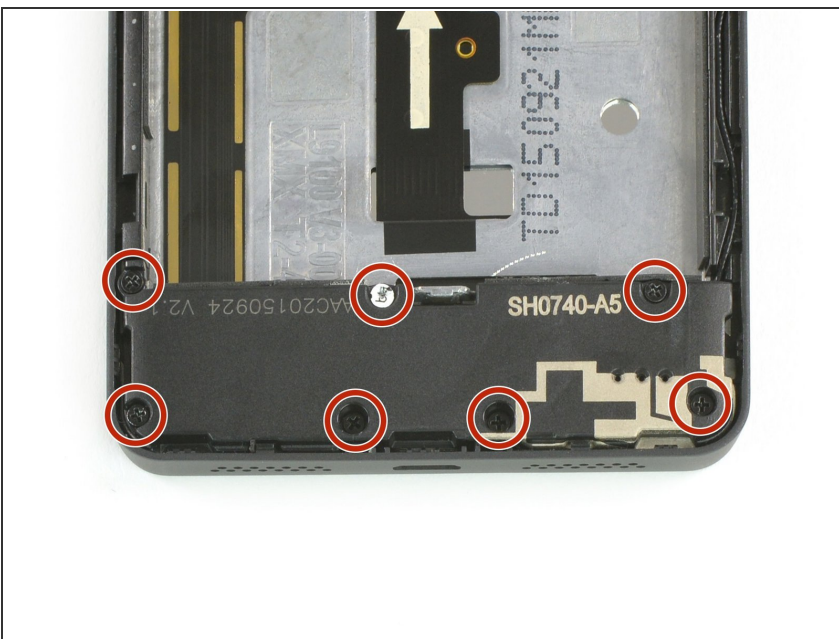
- Insert the flat side of a spudger between the mainboard shield and the frame of the phone.
- Twist the spudger to lift up the mainboard shield.
- Remove the mainboard shield from the phone.

## Step 6



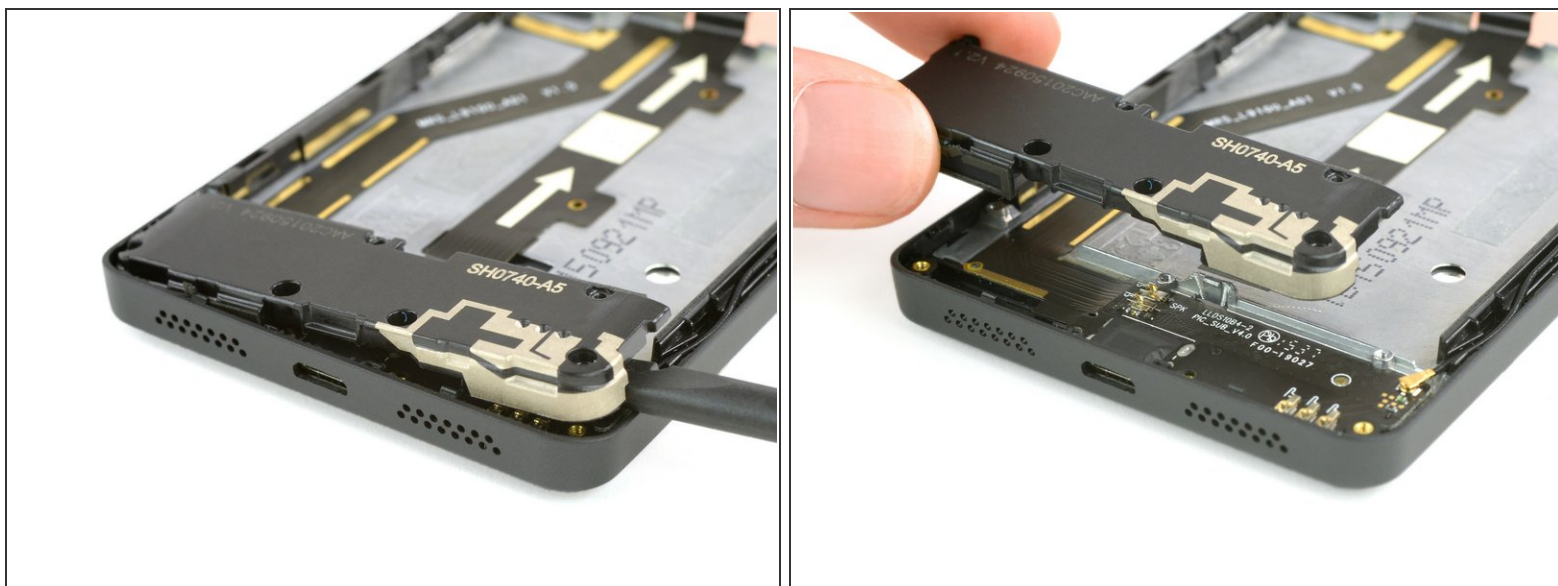
- Use a spudger to disconnect the battery's flex cable from the mainboard.
- Pull off the sticker on the bottom side of the battery.
- Grab the sticker and lift it up to take the battery out of the phone.

## Step 7 — Loud Speaker



- Take out the seven 4mm Phillips #00 screws, holding the loud speaker unit to the mid frame of the phone.

## Step 8



- Insert the flat side of a spudger into the gap on the right side of the loud speaker.
- Lever the loud speaker up with the spudger.
- Grab the loud speaker and take it out of the phone.

To reassemble your device, follow these instructions in reverse order.